

Q2W6

Epistles

Genre Specific Principles **TOPIC 1**

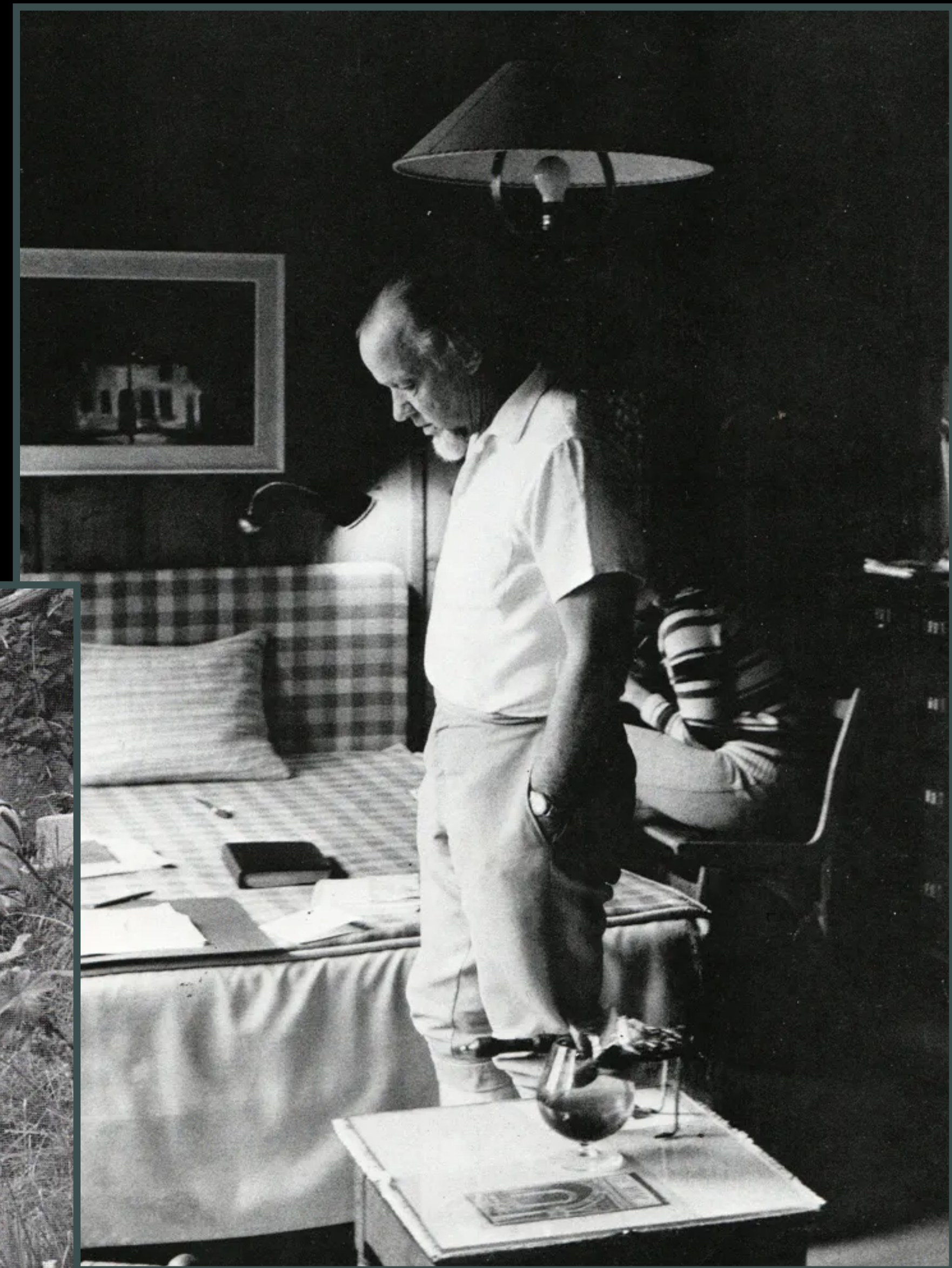
Example Text **TOPIC 2**

Practice Text **TOPIC 3**

FRANCIS SCHAEFFER

1912-1984

L'abri Fellowships



PROVERBS 3

Principle

Principle Questions

TOPIC 1

Genre Specific Principles



PRINCIPLES

- 1** The study of epistles is a more technical process than the study of other types of New Testament literature.
- 2** Proper interpretation of epistles requires patient and purposeful consideration of the flow of thought.
- 3** Unlike narratives, epistles exist for the expressed purpose of instruction in the doctrines of God.
- 4** Epistles will include practical applications and exhortations that are personal in nature, but they are primarily written to explain and teach a specific set of truths from God.



STUDY BLOCKS

Connect	
Questions	
Observations	
Flow Of Thought	
Main Principles	
Inconsistencies	
Main Principle Questions	



TOPIC 1

Genre Specific Principles

TOPIC 2

Example Text



ROMANS 5:1-11

- Read
- Observe
- Outline
- Scenes
- Summaries
- Principle
- Study Box

BREAK
15 MINUTES



UN COMMON SENSE

Communication



TOPIC 1

Genre Specific Principles

TOPIC 2

Example Text

TOPIC 3

Practice Text



HOMework

Relationship - God	Psalms 90-96
Memory	Hebrews 4:12-13
Reading	The Story Of Scripture, Chapter 6
Study Blocks	Philippians 1:1-11
Observation	Daniel 7
Relationship - Coach	Meeting Of Purpose
Relationship - MC	Gathering And Small Group

