

KINGDOM PRIORITIES

COLOSSIANS 3:1-17



¹if then you have been raised with christ,
Seek the things that are above, where christ is,
Seated at the right hand of god. ²set your minds on things that are above,
not on things that are on earth. ³for you have died, and your life is hidden
with christ in god. ⁴when christ who is your life appears, then you also will
appear with him in glory. ⁵put to death therefore what is earthly in you:
sexual immorality, impurity, passion, evil desire, and covetousness, which is
idolatry.



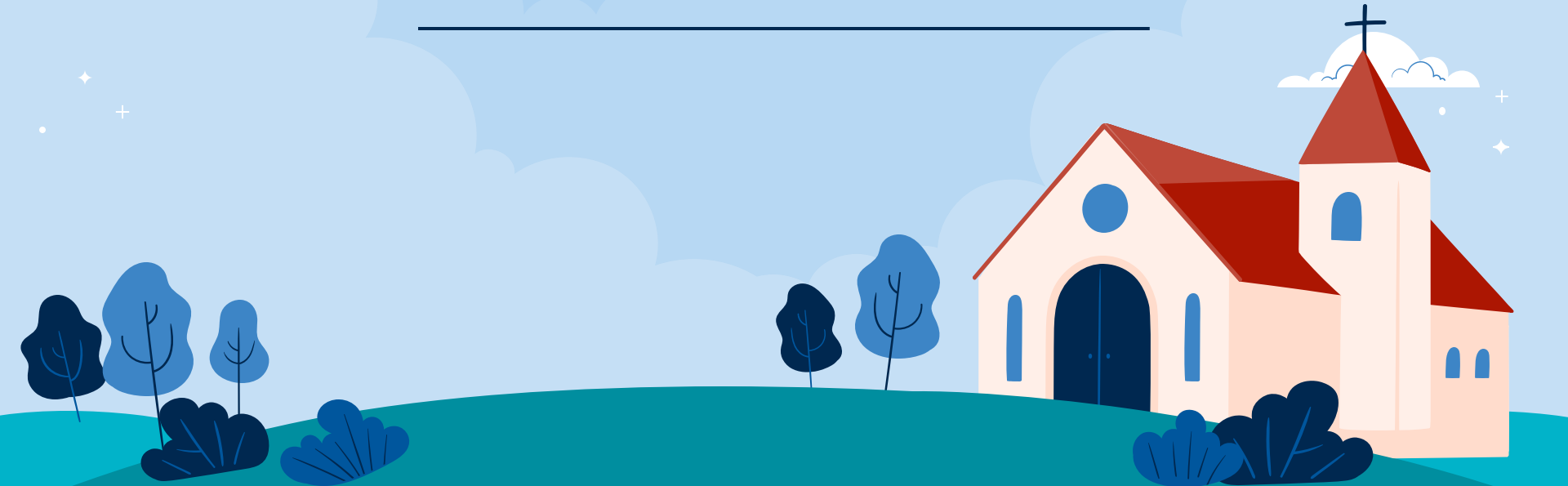
⁶on account of these the wrath of god is coming. ⁷in these you too once walked, when you were living in them. ⁸but now you must put them all away: anger, wrath, malice, slander, and obscene talk from your mouth. ⁹do not lie to one another, seeing that you have put off the old self with its practices ¹⁰and have put on the new self, which is being renewed in knowledge after the image of its creator.

¹¹ Here there is not Greek and Jew, circumcised and uncircumcised, barbarian, Scythian, slave, free; but Christ is all, and in all. ¹² Put on then, as God's chosen ones, holy and beloved, compassionate hearts, kindness, humility, meekness, and patience, ¹³ bearing with one another and, if one has a complaint against another, forgiving each other; as the Lord has forgiven you, so you also must forgive.

¹⁴ And above all these put on love, which binds everything together in perfect harmony. ¹⁵ And let the peace of Christ rule in your hearts, to which indeed you were called in one body. And be thankful. ¹⁶ Let the word of Christ dwell in you richly, teaching and admonishing one another in all wisdom, singing psalms and hymns and spiritual songs, with thankfulness in your hearts to God.

¹⁷ and whatever you do, in word or deed, do everything in the name of the lord jesus, giving thanks to god the father through him.

WHAT ARE OUR PRIORITIES?



**FOLLOWING THE MOVEMENT OF THE HOLY
SPIRIT, BAYBROOK BAPTIST CHURCH SEEKS TO
JOIN GOD AT WORK THROUGH...**



A church culture with **KINGDOM** **PRIORITIES** and an external focus



Kingdom priorities



BACKGROUND

Author: apostle paul

Date: ABOUT 60AD



The background of the slide features a light blue sky with stylized white clouds and small white stars. The clouds are simple, rounded shapes, and the stars are small plus signs and dots. The overall aesthetic is clean and modern.

purpose

AFFIRM THE SUPREMACY OF CHRIST
TO COMBAT HERETICAL TEACHINGS

ENCOURAGING BELIEVERS TO LIVE OUT THEIR FAITH IN
CHRIST



The background is a light blue sky with stylized white clouds at the top and bottom. Small white stars and plus signs are scattered across the sky. In the foreground, there are rolling green hills with dark blue bushes and trees. On the right side, there is a stylized church with a red roof, a red door, and a cross on its steeple. The church has a simple, modern design with a cross also on the front facade.

A CALL TO KINGDOM LIVING

We are called upward
to live as those raised with Christ

A stylized illustration of a church with a red roof and a cross on top, situated on a green hill. There are several blue trees of different shapes and sizes around the church. The sky is light blue with white clouds, stars, and a crescent moon. The overall style is flat and modern.

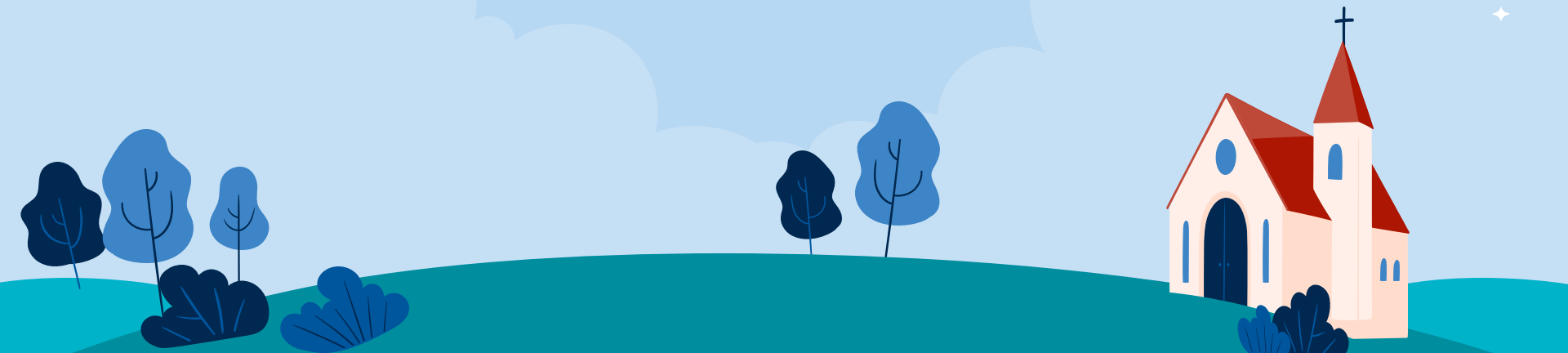
SEEK WHAT'S ABOVE

¹ If then you have been raised with Christ, seek the things that are above, where Christ is, seated at the right hand of God. ² **Set your minds on things that are above**, not on things that are on earth. ³ For you have died, and **your life is hidden with Christ in God.** ⁴ When Christ who is your life appears, then **you also will appear with him in glory.**



KINGDOM PRIORITY ONE

AN ETERNAL PERSPECTIVE
OVER TEMPORARY DISTRACTION



PUT TO DEATH THE OLD SELF

⁵ Put to death therefore what is earthly in you: sexual immorality, impurity, passion, evil desire, and covetousness, which is idolatry. ⁶ On account of these the wrath of God is coming. ⁷ In these you too once walked, when you were living in them. ⁸ But now you must put them all away: anger, wrath, malice, slander, and obscene talk from your mouth. ⁹ Do not lie to one another, seeing that you have put off the old self with its practices



KINGDOM PRIORITY TWO

HOLINESS
OVER
CONVENIENCE



PUT ON THE NEW SELF

¹⁰ and have put on the new self, which is being renewed in knowledge after the image of its creator.. ¹¹ Here there is not Greek and Jew, circumcised and uncircumcised, barbarian, Scythian, slave, free; but Christ is all, and in all. ¹² Put on then, as God's chosen ones, holy and beloved, compassionate hearts, kindness, humility, meekness, and patience, ¹³ bearing with one another and, if one has a complaint against another, forgiving each other; as the Lord has forgiven you, so you also must forgive. ¹⁴ And above all these put on love, which binds everything together in perfect harmony.



KINGDOM PRIORITY THREE

CHRISTLIKE CHARACTER
OVER CULTURAL
CONFORMITY



The background features a stylized landscape with rolling hills in shades of teal and blue. In the foreground, there are several dark blue and light blue trees and bushes. The sky is a light blue with white clouds, stars, and a large, faint sun or moon in the center. The title 'LET CHRIST RULE' is centered at the top in a bold, black, sans-serif font, underlined.

LET CHRIST RULE

¹⁵ And let the peace of Christ rule in your hearts, to which indeed you were called in one body. And be thankful. ¹⁶ Let the word of Christ dwell in you richly, teaching and admonishing one another in all wisdom, singing psalms and hymns and spiritual songs, with thankfulness in your hearts to God. ¹⁷ and whatever you do, in word or deed, do everything in the name of the lord jesus, giving thanks to god the father through him.

The background of the slide is a stylized landscape. At the bottom, there is a teal-colored ground with rolling hills. On the left side, there are several dark blue and light blue trees and bushes. In the center, there are two more trees. On the right side, there is a small, light orange church with a red roof and a cross on top. The sky is a light blue color with white clouds at the top and bottom. There are also small white stars and plus signs scattered throughout the sky. The text is centered in the upper half of the slide.

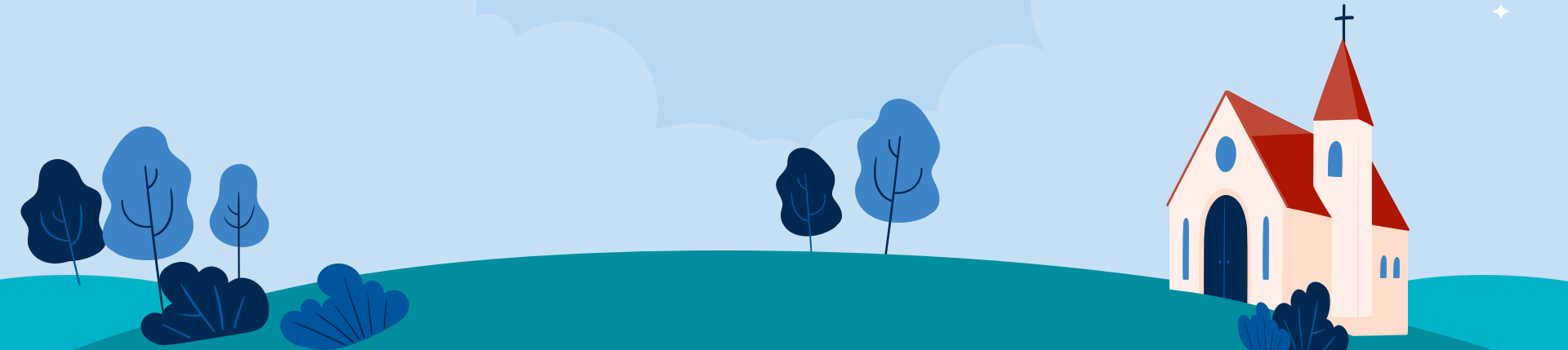
KINGDOM PRIORITY FOUR

WHOLE-LIFE DISCIPLESHIP
OVER COMPARTMENTALIZED FAITH



KINGDOM PRIORITIES

1. AN ETERNAL PERSPECTIVE OVER TEMPORARY DISTRACTION
2. HOLINESS OVER CONVENIENCE
3. CHRISTLIKE CHARACTER OVER CULTURAL CONFORMITY
4. WHOLE-LIFE DISCIPLESHIP OVER COMPARTMENTALIZED FAITH



LIVE IT OUT

THE KINGDOM FRAMEWORK

THREE WAYS TO RESPOND TO LIVING OUR KINGDOM PRIORITIES



The background is a light blue sky with stylized white clouds and small white stars. At the bottom, there is a teal-colored hill. On the left side of the hill, there are several dark blue trees and bushes. On the right side, there is a white church with a blue roof and a red cross on its front. The church has red arched windows and a small bell tower. The overall style is flat and modern.

GET INTO THE WORD

“Let the word of Christ dwell in you richly...”

The background is a stylized landscape. At the bottom, there are rolling hills in shades of teal and blue. On the right side, a white church with a blue roof and a cross on its steeple sits on a hill. To the left of the church, there are several dark blue trees and bushes. The sky is a light blue with large, soft, white clouds. Scattered throughout the sky are small white stars and plus signs. The text is centered in the upper half of the image.

GET INTO THE WORD

SATURATE YOUR MIND WITH SCRIPTURE

LET GOD'S TRUTH SHAPE YOU

The background is a light blue sky with white clouds and small white stars. In the foreground, there are rolling green hills with dark green bushes and trees. On the right side, there is a stylized church with a red roof, a cross on its facade, and red arched windows. The title "GET INTO WORSHIP" is written in large, bold, dark blue capital letters in the center of the image.

GET INTO WORSHIP

“...singing psalms and hymns and spiritual
songs...”

The background is a stylized landscape. At the bottom, there are rolling hills in shades of teal and blue. On the right side, a white church with a blue roof and a cross on its facade sits on a hill. To the left of the church, there are several dark blue trees and bushes. The sky is a light blue gradient, filled with soft, white clouds. Small white stars and plus signs are scattered across the sky. The text is centered in the upper half of the image.

GET INTO WORSHIP

WORSHIP IS NOT JUST MUSIC

ALLOW PRAISE TO RESET YOUR
PERSPECTIVE



GET INTO THE WORLD



The background is a light blue sky with white clouds and small white stars. At the bottom, there is a teal-colored ground with dark blue bushes and trees. On the right side, there is a stylized church with a blue roof, a red cross on its front, and red arched windows. On the left side, there are several dark blue trees and bushes.

GET INTO THE WORLD

“whatever you do, in word or deed, do
everything in the name of the lord jesus”

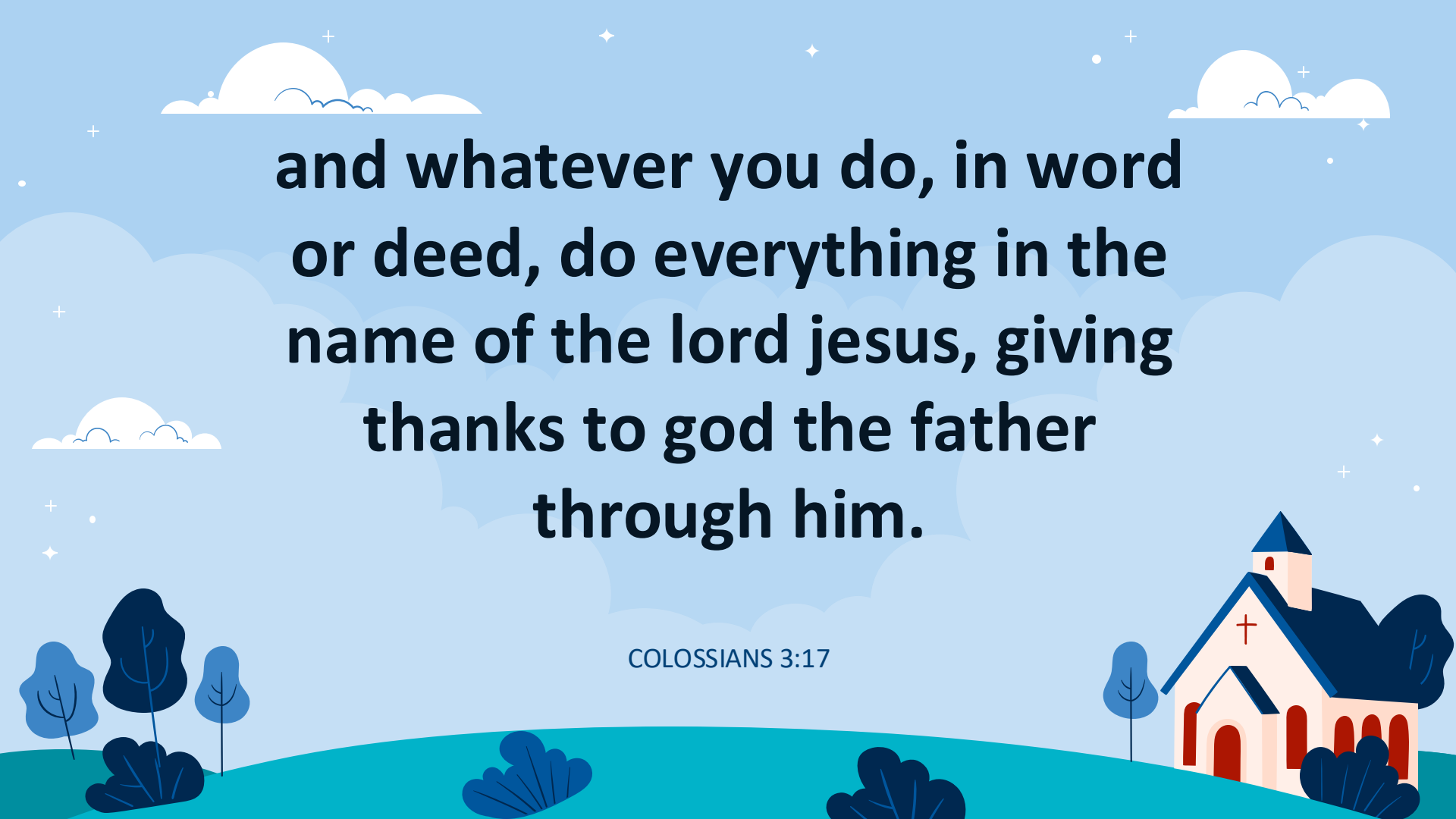
The background is a stylized landscape. At the bottom, there are rolling hills in shades of teal and blue. On the right side, a white church with a blue roof and a red cross on its steeple sits on a hill. To the left of the church, there are several dark blue trees and bushes. The sky is a light blue gradient, filled with soft, white, puffy clouds. Small white stars and plus signs are scattered across the sky. The text is centered in the upper half of the image.

GET INTO THE WORLD

LIVE YOUR FAITH VISIBLY

YOU ARE A KINGDOM
AMBASSADOR

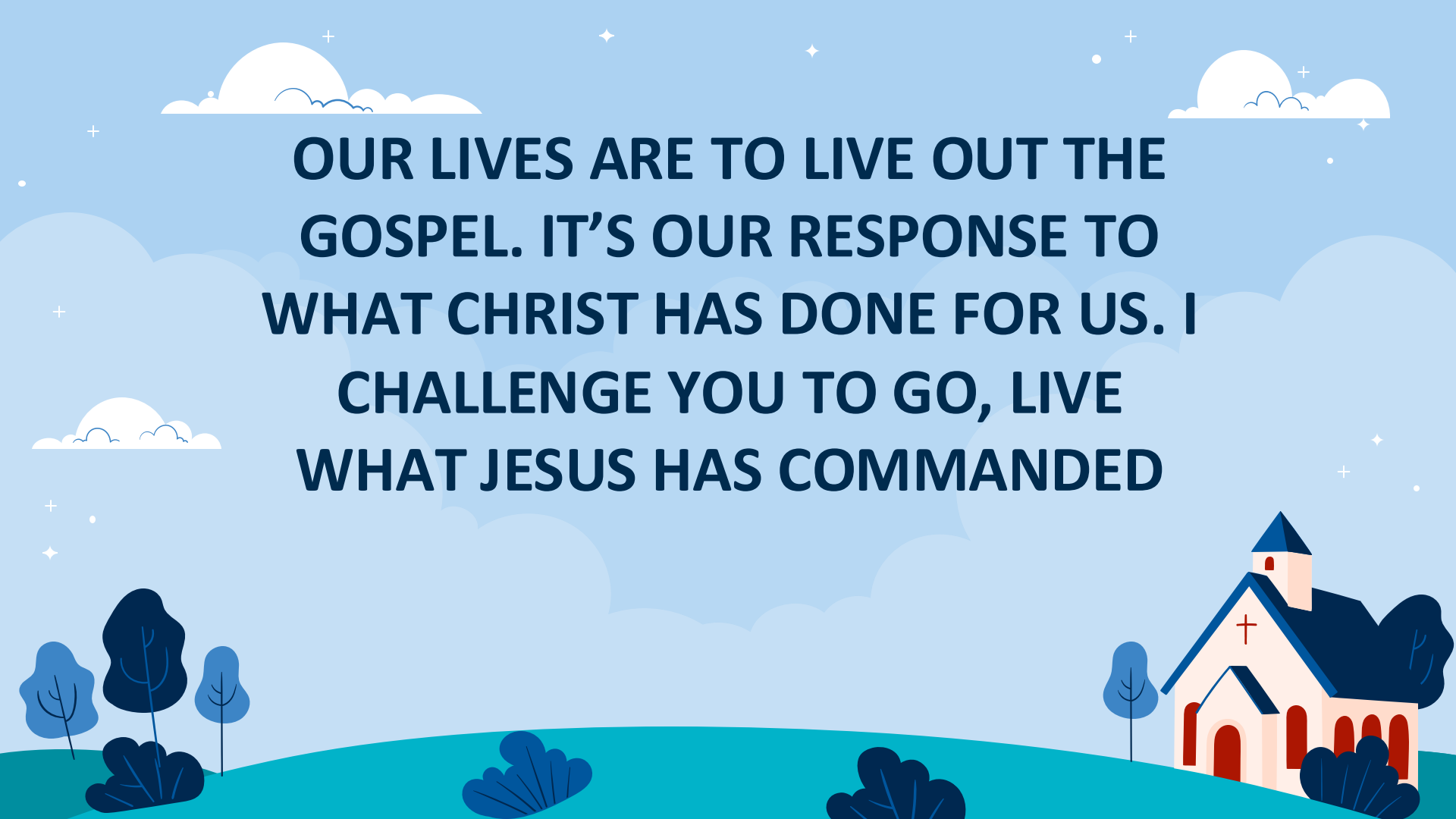
SHARE THE GOSPEL



**and whatever you do, in word
or deed, do everything in the
name of the lord jesus, giving
thanks to god the father
through him.**

COLOSSIANS 3:17

**OUR LIVES ARE TO LIVE OUT THE
GOSPEL. IT'S OUR RESPONSE TO
WHAT CHRIST HAS DONE FOR US. I
CHALLENGE YOU TO GO, LIVE
WHAT JESUS HAS COMMANDED**



KINGDOM PRIORITIES

COLOSSIANS 3:1-17

