

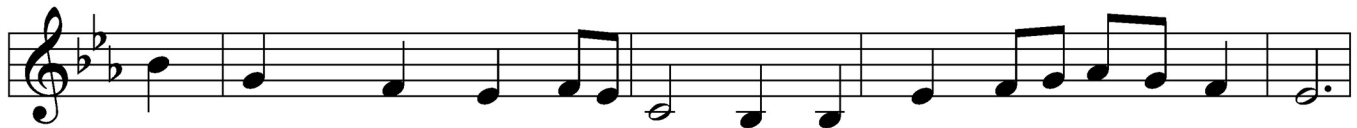
## Pastor's Bible Study

October 8, 2025 – Eighteenth Sunday after Pentecost

LSB 855 – For All the Faithful Women



1 For all the faith-ful wom-en Who served in days of old,  
2 For Ruth, who left her home-land And ven-tured forth in faith,  
3 O God, for saints and ser-vants, Those named and those un-known  
△ 4 All praise to God the Fa-ther! All praise to Christ the Son!



To You shall thanks be giv-en; To all, their sto-ry told.  
Who pledged to serve and wor-ship Na-o-mi's God till death,  
In whom through all the a-ges Your light of glo-ry shone,  
All praise the Ho-ly Spir-it, Who binds the Church in one!



They served with strength and glad-ness In tasks Your wis-dom gave.  
We praise You, God of Is-rael, And pray for hearts set free  
We of-fer glad thanks-giv-ing And fer-vent prayer we raise  
With saints who went be-fore us, With saints who wit-ness still,



To You their lives bore wit-ness, Pro-claimed Your pow'r to save.  
To bind our-selves to oth-ers In love and loy-al-ty.  
That, faith-ful in Your ser-vice, Our lives may sing Your praise.  
We sing glad Al-le-lu-ias And strive to do Your will.

Text: © 1993, 1997, 2003 GIA Publications, Inc. Used by permission: LSB Hymn License no. 110001611

Tune: Public domain

### Read Ruth 1:1-19a:

1. What is the time of the judges?
2. Why is the town Bethlehem significant?
3. Is Naomi being rude to her daughters-in-law urging them to leave her?
4. How does Ruth's response strike you?
5. What word would you use to describe this section of the text?

### Read Ruth 2:1-13, 19-20:

1. How does the Bible's description of Boaz strike you?

2. How does Boaz demonstrate his high character?
3. Is it by chance that Ruth ended up in Boaz's fields?
4. How does this impact Naomi?
5. What word would you use to describe this section of the text?

**Read Ruth 3:1-13:**

1. What do you make of Naomi's plan?
2. Do you understand what a redeemer was in Ruth, Naomi and Boaz's day?
3. What word would you use to describe this section of the text?

**Read Ruth 4:1-17:**

1. How does Boaz's conversation with the other potential redeemer sit with you?
2. What does Ruth and Boaz's marriage this mean for Naomi?
3. What does Ruth and Boaz's marriage this mean for us?
4. What word would you use to describe this section of the text?

**Devotional Thought:**

Ruth refuses to stay in Moab when Naomi determines to go back to Bethlehem, even though her sister-in-law stays in Moab. Ruth boldly confesses her faith in the Lord and her commitment to her family. What an incredible example of godly priorities: the Lord and family come first (*adapted from TLSB, pg. 425*)!

**Prayer:**

Thanks be to God that He put us first and made us family through the suffering, death, and resurrection of Jesus, who crossed heaven and earth to save us. Amen.