

Pastor's Bible Class

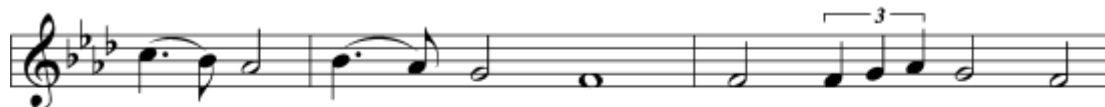
June 9, 2024

The Third Sunday after Pentecost

#578 "Thy Strong Word"



1 Thy strong word did cleave the dark - ness; At Thy
2 Lo, on those who dwelt in dark - ness, Dark as
3 Thy strong Word be - speaks us righ - teous; Bright with
4 From the cross Thy wis - dom shin - ing Break - eth
5 Give us lips to sing Thy glo - ry, Tongues Thy



speak - ing it was done. For cre - at - ed
night and deep as death, Broke the light of
Thine own ho - li - ness, Glo - rious now, we
forth in con - qu'ring might; From the cross for -
mer - cy to pro - claim, Throats that shout the



light we thank Thee, While Thine or - dered sea - sons run.
Thy sal - va - tion, Breathed Thine own life - breath - ing breath.
press toward glo - ry, And our lives our hopes con - fess.
ev - er beam - eth All Thy bright re - deem - ing light.
hope that fills us, Mouths to speak Thy ho - ly name.



Al - le - lu - ia, al - le - lu - ia! Praise to
Al - le - lu - ia, al - le - lu - ia! Praise to
Al - le - lu - ia, al - le - lu - ia! Praise to
Al - le - lu - ia, al - le - lu - ia! Praise to
Al - le - lu - ia, al - le - lu - ia! May the



Thee who light dost send! Al - le - lu - ia,
Thee who light dost send! Al - le - lu - ia,
Thee who light dost send! Al - le - lu - ia,
Thee who light dost send! Al - le - lu - ia,
light which Thou dost send Fill our songs with



al - le - lu - ia! Al - le - lu - ia with - out end!
al - le - lu - ia! Al - le - lu - ia with - out end!
al - le - lu - ia! Al - le - lu - ia with - out end!
al - le - lu - ia! Al - le - lu - ia with - out end!
al - le - lu - ias, Al - le - lu - ias with - out end!

Read Genesis 3:8-15

1. What does the phrase “in the cool of the day” indicate?
2. Why do the man and his wife hide from God?
3. Contrast the opening scene of our text with Genesis 1:31 and 2:25. How do we experience the difference sin makes?
4. What does God’s question in verse 9 mean? Think about the question *and* to whom it is addressed (see 2:16 and 3:6).
5. Why was Adam afraid and what does this tell us about the impact of sin?
6. How does Adam respond when questioned about his sin?
7. How does Adam refer to his wife and what does this tell us about the impact of sin?
8. Examine the curse God levels on the serpent. What is the immediate consequence? What is the delayed and ultimate consequence?
9. Genesis 3:15 is known as the “protoevangel” or the first gospel. Why is this true? See Galatians 4:4, Romans 5:18-19 and Hebrews 2:14.

Read Mark 3:20-35

10. Understanding verse 21 to mean Jesus’ own family, what does this tell us about them and their relationship with Jesus?
11. How might the presence of the teachers of the Law (scribes) have influenced “his family?”
12. Jesus and His disciples were in Capernaum at this time, what does this tell you about the scribes who have come from Jerusalem?
13. About “the sin against the Holy Spirit” Harold Buls writes: “In the final analysis, the sin against the Holy Spirit amounts to the rejection of the forgiveness itself. It must be added here, as has been said so often, that if a person fears having committed this sin, he should be comforted with the fact that he has not committed this sin.” Why does Jesus speak about the sin against the Holy Spirit in verse 29?

Devotional Thought (The Lutheran Study Bible)

“Those who refuse to recognize Jesus as God’s Son and acknowledge His works as manifestations of the Holy Spirit remain under the dominion of Satan. But Jesus has overcome Satan. Those Baptized into Christ have received not only Him, but also His promised Holy Spirit” (TLSB, 1661).

Prayer

Lord, preserve us from the power of Satan. Remove any lingering doubts we might harbor, that we might be confident in the fact that You have bound him and rescued us from his dominion. Amen.