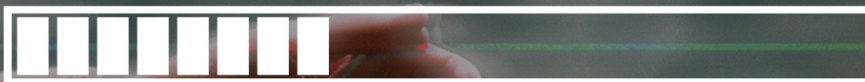


# Finding Purpose...



## Philosopher Jesus - Answers for Life

Luke 21:29-36  
Pastor Ed Kemp

### MESSAGE NOTES

Thursday, November 3  
Sunday, November 6

Introduction

#### A PARABLE:

notes

And He told them a parable: "Look at the fig tree and all the trees: <sup>30</sup>as soon as they put forth leaves, you see for yourselves and know that summer is now near. <sup>31</sup>So you too, when you see these things happening, recognize that the kingdom of God is near.

---

---

---

---

---

---

---

---

---

---

---

---

---

---

---

---

---

---

---

---

---

---

---

---

#### What is a parable?

- Has an allegorical nature.
- Has a plot and tension.
- Reveals a truth and calls for response.
- Similitude is short like an illustration.

#### A PROMISE:

<sup>32</sup>Truly I say to you, this generation will not pass away until all things take place. <sup>33</sup>Heaven and earth will pass away, but My words will not pass away.

#### 3 Theological ideas of "Generation,"

- Means the race of Jewish people.
- Means the group that sees Jesus return in the future.
- Means the group of disciples standing in front of Jesus.

#### A PRAYER:

<sup>34</sup>"But be on your guard (focus your attention toward,) so that your hearts will not be weighed down with dissipation and drunkenness and the worries of life, and that this day will not come on you suddenly, like a trap; <sup>35</sup>for it will come upon all



Jesus the Philosopher: Answers for Life  
Luke 21:29-36, November 3 & 6, 2022

**Prayer Requests:**

**Group Discussion:** What do you enjoy or dread about Spring?

**Read out loud: Luke 21:29-36,**

How do we live as though the Kingdom is near?

#1. Continually absorb the words of Jesus. "...My words will not pass away."

What is your favorite book of the Bible to read? What sermon series in your past has been helpful to you in understanding a book of the Bible? In your small group choose a book that you can read continuously for the next month and have a discussion about what you learned by immersing yourself in one book for a month. Lastly, what is your favorite parable of Jesus and why?

#2. Take responsibility for infusing your heart with hope. "...be on your guard so that your hearts will not be weighed down..."

Some people are encouraged by words, actions, gifts, service. Which one are you and why? "Be on guard..." is an imperative command toward the Church as a whole which implies a united effort to encourage each other's hearts with hope. Are you attempting to encourage anyone at GateWay right now? Would you rather encourage with words or deeds? Do you feel like your parents were encouraging to you in some area of life?

#3. Pursue prayer for spiritual strength. "...stay alert at all times praying that you will have strength..."

This is also an imperative command to stand guard duty on your spiritual strength so that when the time comes you have to make difficult decisions, you're able to do it. So what is one of the most difficult spiritual decisions you've ever made? Without using names, did it involve someone who was difficult to love or someone you had to create distance from because they had such a negative impact on you?

**Family Time:** Read Luke 21:29-31. Take your kids for a walk and look at all the leaves changing color. Ask them if they think it's going to be winter next or summer? Just as the leaves tell us what the next season is, a weekly calendar tells us that Sunday is coming. We worship on Sunday because it was the day Jesus rose from the grave and we honor that day every week. How should we prepare for Sunday or what should we do on that day to honor Jesus?