

Staff

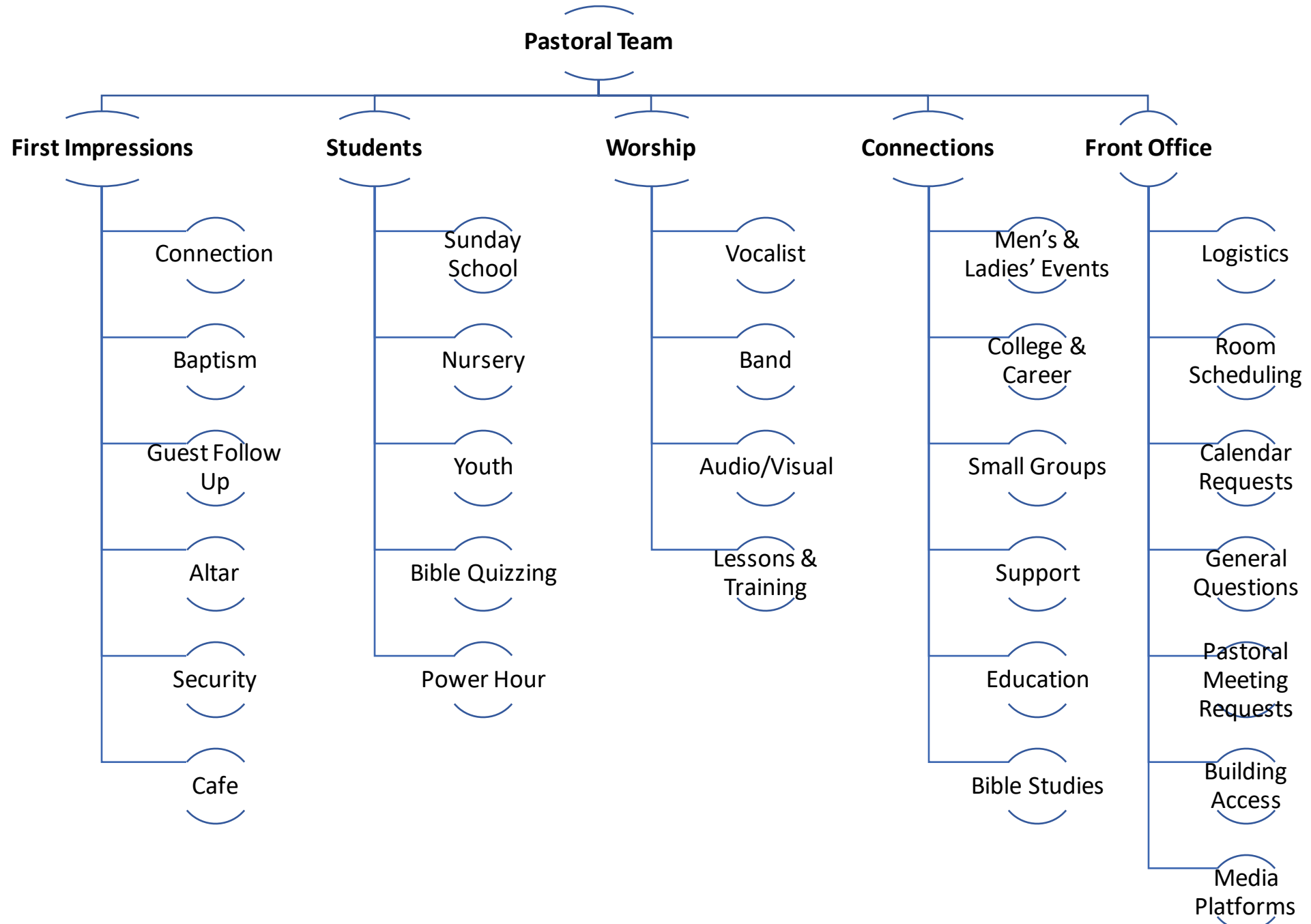
- **Frontline supporters of members & attenders.**
- Singer, cleaner, speaker, teacher, barista, greeter, etc...
- *Staff covers anyone serving on a church team

Coordinators (CRD)

- **Frontline supporters of Staff.**
 - Recruit, train, and coordinate staff members into working teams
 - Communicate issues, training needs, and date requests to the department director.

Directors

- **Frontline supporters of coordinators.**
 - Set & communicating dept vision
 - Organize dept dates & calendars
 - Administrate provided budget(s)
 - Resolve issues



First Impressions

Connection

Baptism

Guest Follow Up

Altar

Security

Cafe

Student Ministry

Sunday School

Nursery

Youth

Bible Quizzing

Power Hour

Worship

Vocalists

Band

Audio/Visual

Lessons & Training

Connections

Men's & Ladies' Events

College & Career

Small Groups

Support

Education

Bible Studies

Front Office

Logistics

Room Scheduling

Calendar Requests

General Questions

Pastoral Meeting Requests

Building Access

Media Platforms

Connection
CRD

Baptism
CRD

Daniel
Berlinger

Guest
Follow Up
CRD

Zach &
Whitney
Wilber

Altar
CRD

Security
CRD

Steve
Sheehan

Café
CRD

Brittney
Reynolds

First Impressions Director

Rob & Eva Fugiel

Sunday
School
CRD

Nursery
CRD
Holli
Reynolds

Youth
CRD
John &
Alexis
Fuller

Bible
Quizzing
CRD
Crystal
Ball

Power
Hour
CRD
Rebecca
Kielley

Student Ministry Director

Patricia Giwa

Vocalists
CRD

Band CRD
Adin Krueger

Audio/Visual
CRD

Lessons &
Training CRD

Worship Director

Andy Harris

Men's &
Ladies' Event
(CD)

College &
Career

Small Groups
David & Zsanelle
Bailey

Education

Bible Studies
Steve Sheehan

Connections Director

Josh & Rachelle Dremmsa

Group
CRD

Men's
CRD

Jason
Kielley

Ladies
CRD

Amanda
Mader

Students
CRD

Families
CRD

Discipleship
CRD

Outreach
CRD

Support
CRD

Small Groups Coordinator

David & Zsanelle Bailey

Logistics

Room
Scheduling

Calendar
Requests

General
Questions

Pastoral
Meeting
Requests

Building
Access

Media
Platforms
Rachelle
Dremsa

Front Office Director

Bethany Harris