

Walk With the Word

Mark 8

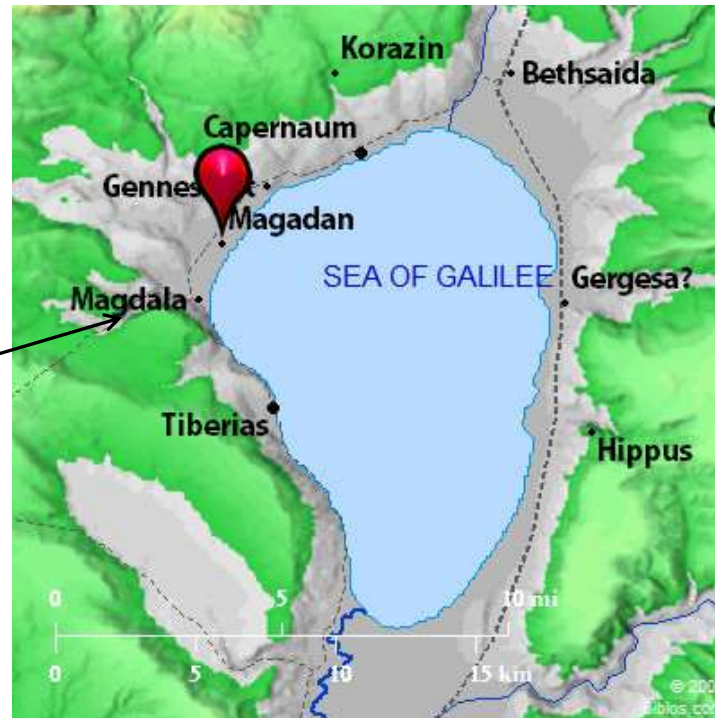


8:1-10 – The feeding of the four thousand.

Symbolic of Jesus' provision for the Gentiles.

Dalmanutha
(Magadan)

Magdala



8:11-13 – The Pharisaic trap of seeking signs.

What sign? And if a sign, would they believe?

8:14-21 – Jesus explains the blindness of the Pharisees.

The bread is a symbol of the Word.

The bread is enough for the whole world.

The disciples do not yet grasp who Jesus is, the eternal creator and giver of life.

8:22-26 – Healing the blind man: a symbol of spiritual sight.





8:27-30 – Peter confesses that Jesus is the Christ, followed immediately by a strong rebuke.

8:31-38 – The key for discipleship: willing to give all.

Point: This means setting your mind, goals, values, interests, and time on the values that are important to God.