

THE KING'S WORSHIP CENTER

WHY WHAT YOU BELIEVE MATTERS

NEW BIBLE STUDY SERIES

EPHESIANS 2:20

TUESDAY • 7PM

FOUNDATION OF TRUTH | SOUND DOCTRINE | STRONG FAITH | UNMOVABLE LIFE

- Bible Study. Doctrine for Life
- Ephesians 2:20
- The King's Worship Center
- Tuesday • 7:00 PM

WHY WHAT YOU BELIEVE MATTERS

- © 2025 Apostle Kelvin A. Steele Deliverance Ministries, Inc. All Rights Reserved.

Tonight's Focus



- Christianity is a revealed faith, not a self-interpreted one



- Doctrine is protection, not restriction



- Belief always shapes behavior



- Sound doctrine stabilizes faith under pressure

What Is Doctrine?

Doctrine simply means teaching.

It is what Scripture reveals, what the Church believes, and what shapes how believers live.

Doctrine answers:

- Who G-d is
- Who Jesus Christ is
- What salvation means
- How believers are to live

Doctrine Is Not



- Personality



- Denomination



- Opinion



- Tradition without Scripture



Doctrine is truth taught and trusted.

Ephesians 2:20

“Built on the foundation of the apostles and prophets, Christ Jesus Himself being the cornerstone.”

What Paul Is Saying



- Foundations are laid once, not updated



- Apostles and prophets represent authoritative revelation



- Christ is the reference point, not an accessory



If it does not align with Christ, it does not belong in the structure.

Why This Still Applies

Faith is structural, not flexible

Belief is architectural, not emotional

Churches don't collapse from storms, they collapse from weak foundations

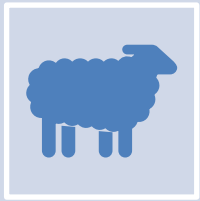
You can modernize methods.

You cannot modernize foundations.

PK's Thought: "What you build on determines what you will become."

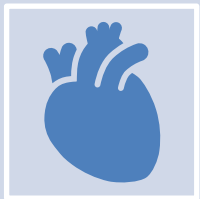
PK's Point 1:

Belief Always Precedes Behavior



Proverbs 23:7

“As a man thinks in his heart, so is he.”



Note: Heart= The Mind + Moral Insight

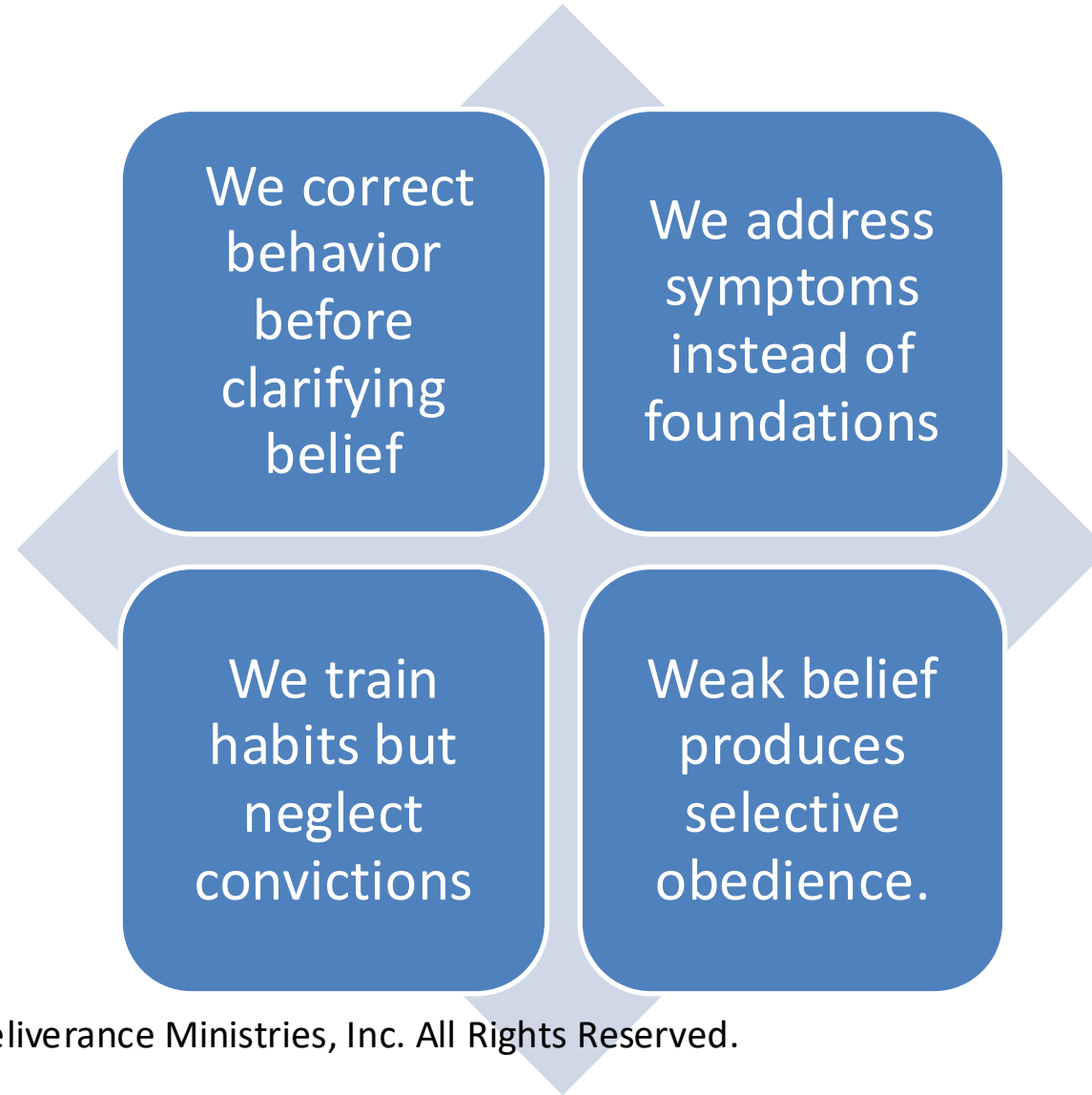
Meaning: Your Belief precedes your behavior

Reflection: What beliefs explain my habits?

Biblical Understanding of the Heart

- Center of reasoning
- Moral decision-making
- Will and intention
- Behavior reveals belief eventually
- Behavior also reveals theology
- It cannot stay hidden forever.

Why We Struggle Today



PK's Point #2

Doctrine Is The Guardrail That Keeps Danger Out

- 2 Timothy 4:3–4

For the time will come when they will not tolerate sound doctrine; but wanting to have their ears tickled, they will accumulate for themselves teachers in accordance with their own desires, 4 and they will turn their ears away from the truth and will turn aside to myths.

What Paul Prepared Us For

- Truth would be rejected, not lost
- Preference would replace submission
- People would shop for affirmation
- Myth would replace authority

The danger is not disbelief.

The danger is customized belief.

Doctrine Protects



Guardrails do not stop movement they prevent destruction.



Sound doctrine prevents cultural mixture, and myth driven theology.



Doctrine does not limit faith It directs it.



It prevents preference driven faith.

PK's Point #3

Discernment Is Doctrine in Motion

➤ 1 John 4:1

Beloved, do not believe every spirit, but **TEST** the spirits to see whether they are from God, because many false prophets have gone out into the world.

“But Test”

Greek Word for Test: dokimazō (δοκιμάζω) – to examine, prove genuine, scrutinize, authenticate

Used of testing metals, verifying coins, and evaluating for approval

Grammatical Intent:

- Present imperative → continual action
 - Not a one-time check, but a constant discipline of the believer
-

What Testing Means:

- Careful examination, not emotional reaction
 - Measuring teaching against objective truth
 - Evaluating doctrine, prophecy, and spiritual claims
 - Rejecting what does not hold up under scrutiny
-

The Standard of the Test:

- Sound doctrine
 - Right Christology
 - Apostolic truth (Scripture, not experience)
-

Core Implication:

Every voice, every message, every movement must be examined by truth before it is accepted.

Discernment is not suspicion—it is biblical responsibility.

What Discernment Means

Evaluation, not emotion



Comparison to revealed truth



Alignment with Christ and apostolic teaching



The Spirit of G-d never contradicts the Word of G-d.



PK's Point #4

Monitor The Pattern (Gen. 3)

- Question the Word

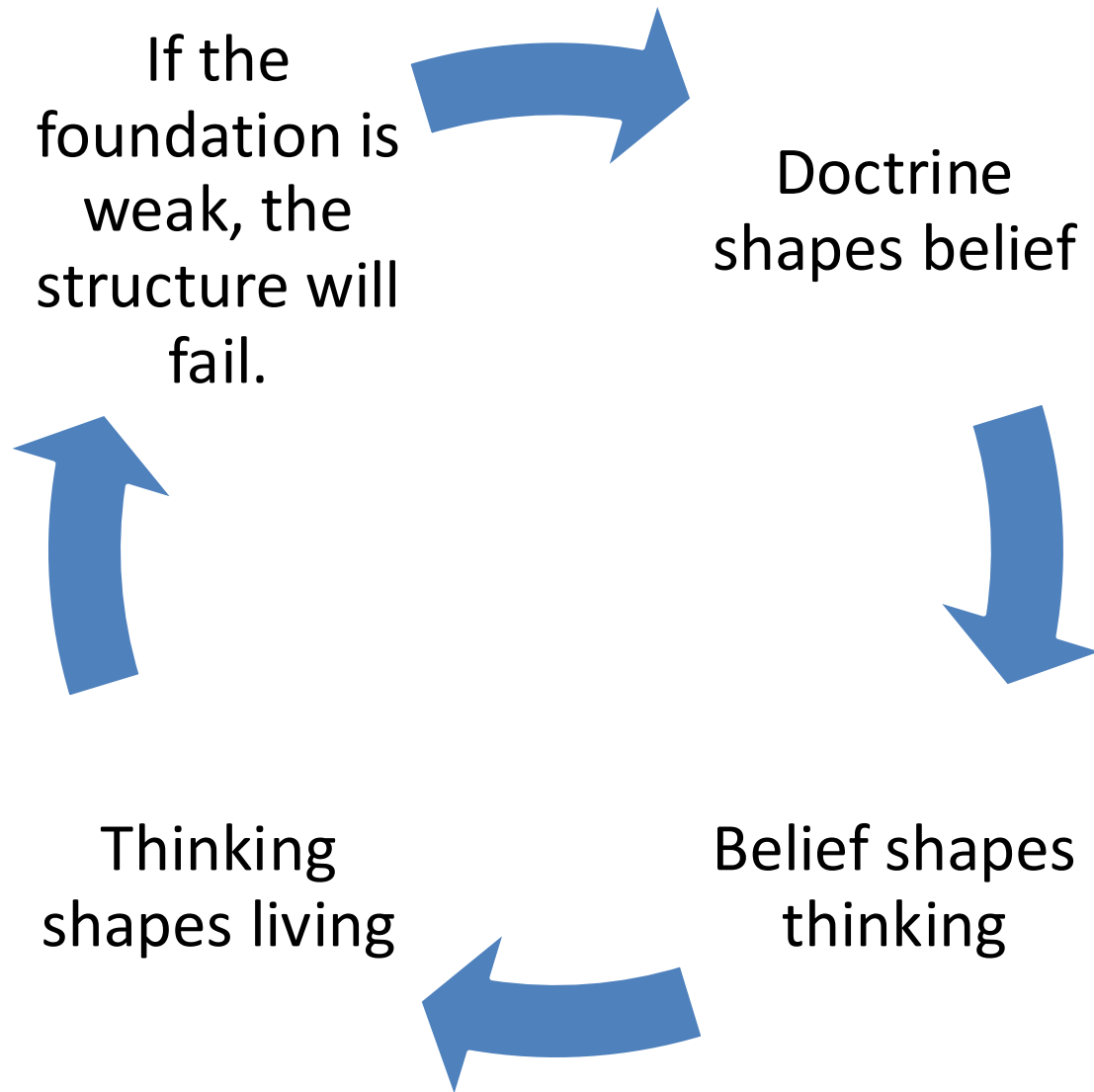
- Distort the motive

- Minimize the consequence

Error entered
before rebellion.

It entered
through
reinterpretation.

Put It All Together



Coming Next Week

- What Is Doctrine, and Why It Protects You
- Understanding authority, sources, and discernment
- Tuesday • 7:00 PM
- The King's Worship Center