



KINGDOM  PARTNERSHIP

ADVANCING GOD'S PURPOSE, PLAN & PROMISES ON EARTH.

Partnership Means:

To Join Together. The association of two or more individuals for the purpose of undertaking a **GOAL OR VISION.**

KINGDOM  PARTNERSHIP

ADVANCING GOD'S PURPOSE, PLAN & PROMISES ON EARTH.



**Partnership is NOT 50/50
It is 100/100**

KINGDOM  PARTNERSHIP


ADVANCING GOD'S PURPOSE, PLAN & PROMISES ON EARTH.



Unity
Agreement
Investment
Partnership = Commonality
Joint Strength
Same Heart
Same Mind
Same Goal

KINGDOM  PARTNERSHIP

ADVANCING GOD'S PURPOSE, PLAN & PROMISES ON EARTH.



**When you commit to partnering
with God, He commits to
partnering with you.**

KINGDOM  PARTNERSHIP

ADVANCING GOD'S PURPOSE, PLAN & PROMISES ON EARTH.

A dramatic landscape with mountains and a sunburst effect in a cloudy sky. The sun is low on the horizon, creating a bright glow and long shadows across the mountain ranges. The sky is filled with soft, wispy clouds, and the overall color palette is dominated by deep blues, greys, and warm golden-brown tones from the sunlight.

Partnership is Reciprocal.
(What you put into it...you get out of it.)

KINGDOM  PARTNERSHIP

ADVANCING GOD'S PURPOSE, PLAN & PROMISES ON EARTH.

A dramatic landscape with mountains and a sunburst effect in a cloudy sky. The sun is low on the horizon, creating a bright glow and lens flare effect. The mountains are silhouetted against the light sky. The overall mood is inspirational and hopeful.

**You are a representative
(or a picture) of the Kingdom of God.**

KINGDOM  PARTNERSHIP

ADVANCING GOD'S PURPOSE, PLAN & PROMISES ON EARTH.



Satan is out to destroy Kingdom Partnerships.

KINGDOM  PARTNERSHIP

ADVANCING GOD'S PURPOSE, PLAN & PROMISES ON EARTH.



**If Satan can destroy you, he can
destroy the Kingdom.**

KINGDOM  PARTNERSHIP

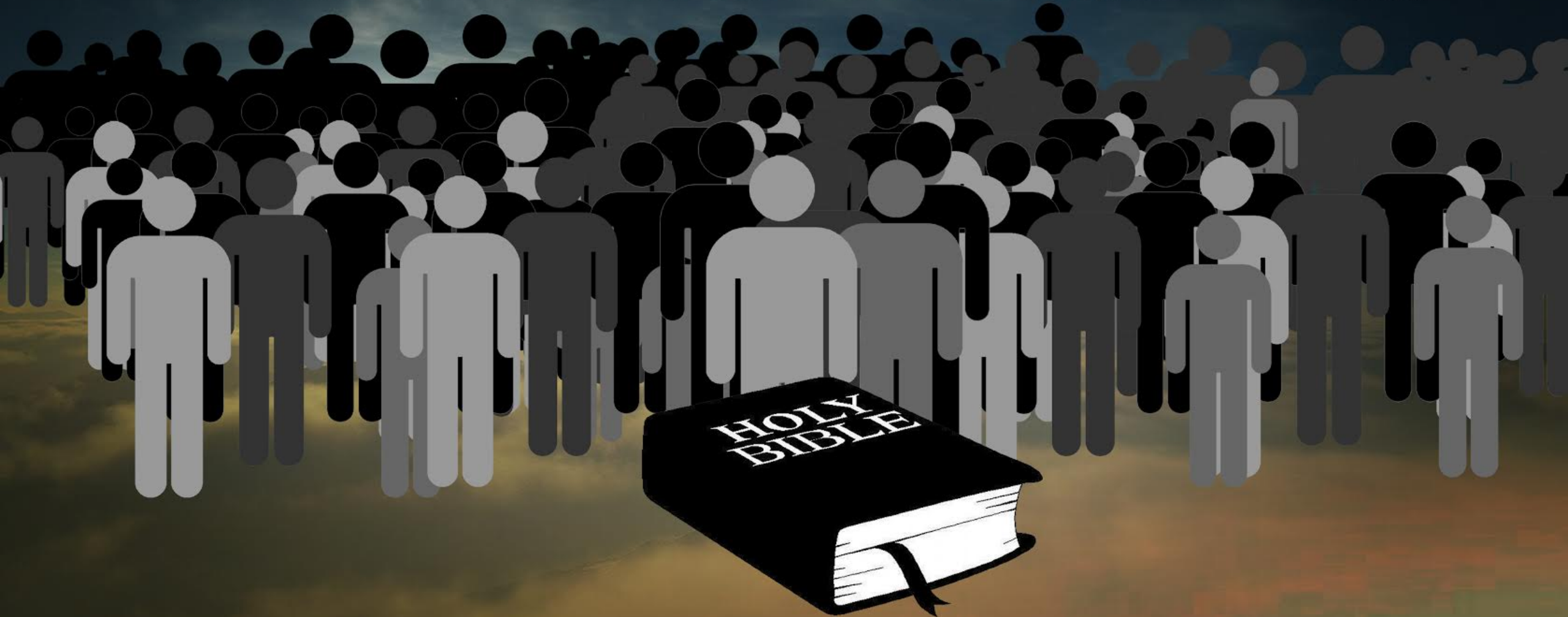
ADVANCING GOD'S PURPOSE, PLAN & PROMISES ON EARTH.

**One of Satan's main tactics to stop
your partnership with the Kingdom, is to
turn YOU into your own KING!**

KINGDOM  PARTNERSHIP

ADVANCING GOD'S PURPOSE, PLAN & PROMISES ON EARTH.

THE BIBLE WAS WRITTEN TO A GROUP OF PEOPLE.
INSTRUCTIONS ON HOW TO LIVE GODLY AND BRING THE KINGDOM ON EARTH.



EVERY PERSON IN THE GROUP JOINS IN AGREEMENT TO
ADVANCE THE KINGDOM FORWARD.

"THE POWER
OF ALL!"

"WHAT DOES
GOD WANT!"

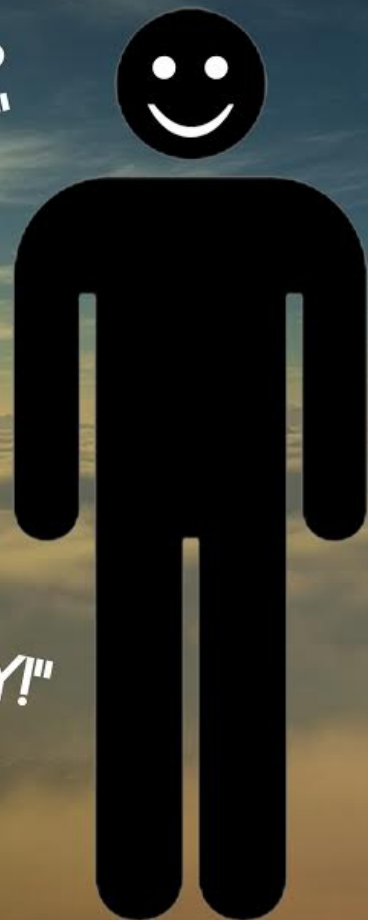
"LET'S ALL
SACRIFICE!"

"WERE IN THIS
TOGETHER!"

"LET'S COME
TOGETHER!"

"WE ARE A BODY!"

"WE NEED EACH
OTHER!"



"OTHERS ARE
COUNTING ON ME!"

"LET'S STAY
UNIFIED!"

"EQUAL SACRIFICE!"

"HOW WILL MY ACTIONS
EFFECT OTHERS?"

"WE NEED TO SUBMIT
TO OUR PASTOR!"

WHEN YOU BECOME YOUR OWN KING IN YOUR OWN KINGDOM, YOU NOW THINK OF ONLY YOURSELF.



NOT KINGDOM MINDED



"WHAT ABOUT MY NEEDS!"

"THAT'S NOT FAIR TO ME!"

"I DON'T WANT TO PARTICIPATE!"

"I DON'T AGREE WITH THAT!"

"WHAT ABOUT MY FEELINGS!"

"WHAT'S IN IT FOR ME!"

"WE'RE GIVING TOO MUCH!"

"I DON'T FEEL LIKE SERVING!"

"I'M HERE TOO MUCH!"

"I'VE BEEN STANDING TOO LONG FOR THESE SONGS!"

"THEY DON'T THINK ABOUT ME!"

"THIS SERVICE IS TOO LONG!"



THIS PERSON NOW:

- FOLLOWS FROM A DISTANCE
- HAS A CRITICAL SPIRIT
- QUESTIONS KINGDOM ADVANCEMENT & MINISTRY PROJECTS.
- DOESN'T SUBMIT TO AUTHORITY
- DOESN'T THINK OF OTHERS
- GOSSIPS & BACKBITES
- STIRS UP STRIFE & CONFUSION
- SOWS DISCORD AMONGST OTHERS (QUESTIONS THE PASTOR, THE LEADERSHIP, AND THE DIRECTION OF THE MINISTRY.)

OTHERS BECOME INFECTED WITH THE
SELF-CENTERED KINGDOM MINDSET.
(THE GROUP IS WEAKENED)



**You need to commit yourself to
Kingdom Partnership...by committing
yourself to the KING!!**

KINGDOM  PARTNERSHIP

ADVANCING GOD'S PURPOSE, PLAN & PROMISES ON EARTH.