



SESSION TWO: LEADER

What does it look like for us as men to be leaders?



The Question at the Trailhead

The Story: A young man named Hayden, wanting to honor Jesus and his new girlfriend, asked a simple question: “How do I lead?”

The Tension: There are no easy “textbook” answers. The world is filled with conflicting ideas of what male leadership should look like.

The Goal: Discover the “secret sauce” of effective, godly leadership.

True North: The Definition of Leadership

“Leadership is taking **initiative** to create spaces for people in your life to feel **safe, loved, and empowered** to be who God created them to be.”



Leadership is about **Stewarding** the influence God has given you and **Taking Initiative** to care for the people in your life.

Follow my example, as I follow
the example of Christ.
— 1 Corinthians 11:1

The Guide's Example

Waypoint 1



Invest & Serve.
Paul didn't just preach; he
lived alongside the people.

Waypoint 2



Build Trust.
The people knew he
loved them, so they
trusted his direction.

Waypoint 3



Sacrifice Preference.
Paul willingly put the
convictions of others over his
own comforts (1 Cor 10:32-33).

The Field Guide: 3 Mandates for Men

How does this translate to normal life?
What do we do with this?



Waypoint 1:
Lead Yourself



Waypoint 2:
Lead Others



Waypoint 3:
Follow

Mandate 1: Men Lead Themselves



The Oxygen Mask Principle:
You cannot lead others somewhere you haven't been. You must secure your own mask first.



The Warning (Proverbs 25:28):
“Like a city whose walls are broken down is a person who lacks self-control.”
A man without self-control opens his life (and those he loves) to destruction.

The Core Requirement: Discipline & Self-Control.

The **Self-Leadership** Diagnostic

Self-Reflection, Not Self-Condensation.
Ask yourself (and those closest to you):

- Am I worth following?
- Does my walk match my talk?
- Am I the same person during the week as I am on Sunday mornings?
- Am I controlling my thoughts, words, and calendar?

Only watered grass thrives. You decide what you water.

Mandate 2: Men Lead Others



The Reality:

Only 10% of practicing Christians are discipling others.

The Problem:

We focus so heavily on our personal need to be disciplined that we write off our Great Commission calling to make disciples.

The Fix:

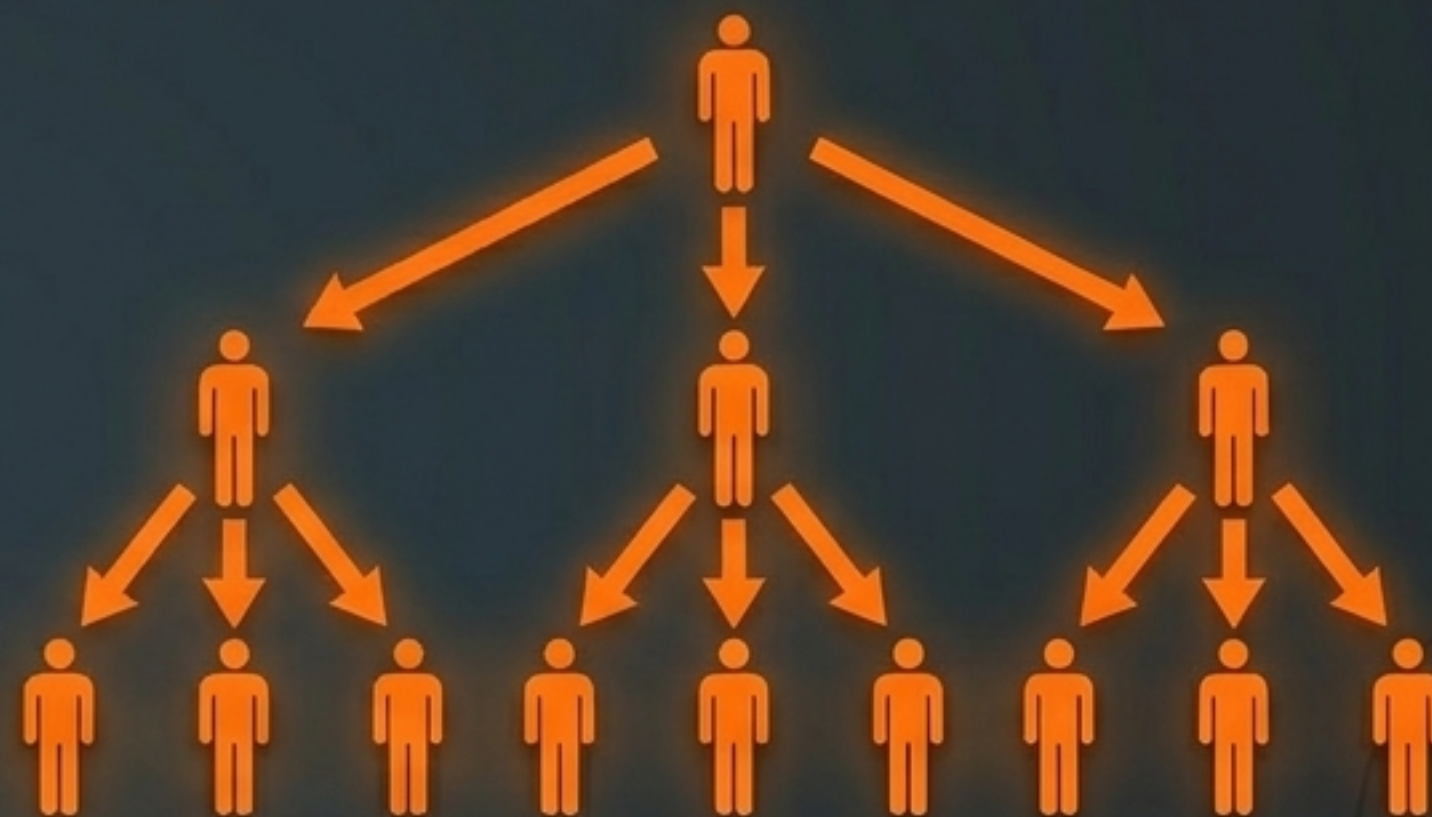
Break the trend. This ministry exists to equip men to equip men.

The **Discipleship** Multiplier

Addition



Multiplication



The Goal: Multiplication, not addition. “It’s not about butts in seats, it’s about putting boots on feet.”

The Invitation: “Follow me as I follow Christ” is a direct invitation to learn, so you can turn around and teach someone else.

Mandate 3: Men Follow



“If you can’t follow then you can never lead... A real man bows down to authority.” – Lecrae

The Paradox: Submission (Hypotasso in Greek) isn’t defeat, inferiority, or being a doormat. It is a military term meaning to arrange in order.

The Rule of Alignment:
Alignment = Safety.
Out of Alignment = Danger.

The **Three Arenas** of Alignment



Submission is not a passive stance; it is an active choice.
Where do we need to lead the charge in arranging ourselves in order?

Alignment in Marriage & Work



Marriage (Ephesians 5:25)

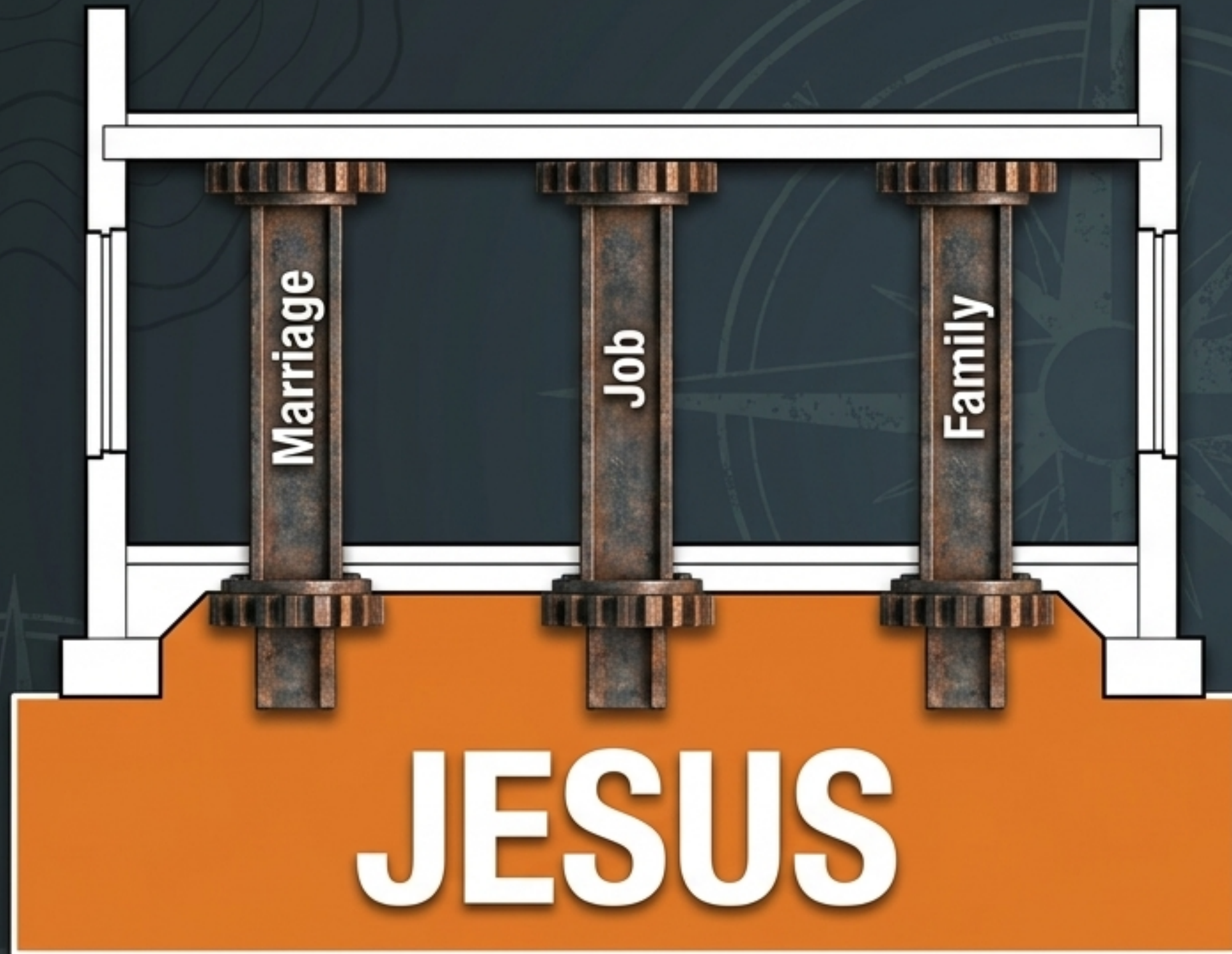
- Initiate the “submission competition.”
- Be willing to die to self and deny personal wants.
- Serve her daily (do the dishes, help out). Earn respect, because respect is a gift, not a right.



Jobs (Colossians 3:22-23)

- Honor your employer, whether they are watching or not.
- Give your absolute best as if working for Jesus, not them.
- Stop the gossip, complaining, and doing the bare minimum.

The **Foundation:** Submitting to Jesus



Core Insight: Jesus cannot be the foundation of your marriage or job until He is the foundation of your life.

The Reality: "I can only lead you in the ways of Jesus if Jesus is leading me."

The Dependency: Bearing the Fruit of the Spirit is impossible if you are not connected to the Vine (John 15).

Synthesis: Transformation vs. Modification

Behavior Modification (The Loop of Deficit)	True Submission (The Life of Leadership)
Focus: Rules (e.g., stop cussing, stop drinking).	Focus: Alignment (Following Christ so others can safely follow you).
Mindset: Apathetic; focused only on where you fall short.	Mindset: Empowered; receiving God's love in order to love others.
Result: Exhaustion. Jesus is treated merely as a "bailout buddy."	Result: Bearing the Fruit of the Spirit. True, sustainable transformation.



BREAK THE CHAIN OF APATHY

There are people in your life waiting for you to take initiative, step up, and lead. Are you submitted to Jesus? Have you given Him control? Let Him love you, so you can lead others.

1 Corinthians 16:13 — “Be watchful, stand firm in the faith, act like men, be strong.”