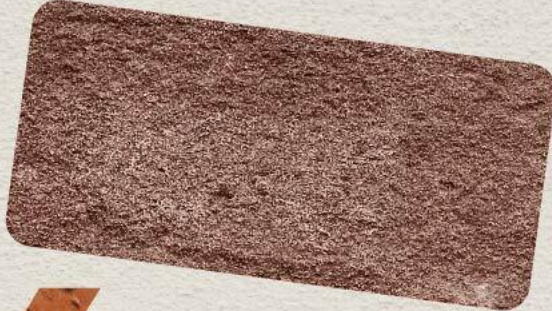
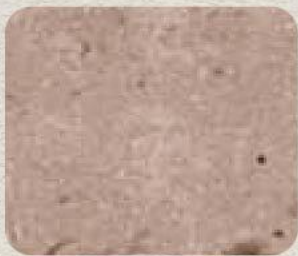


**BRICK**



**BY**

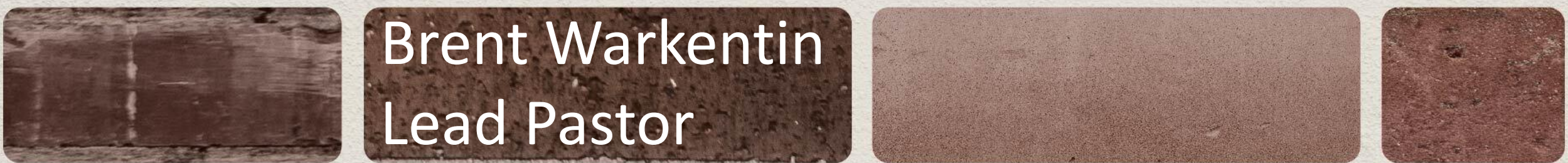
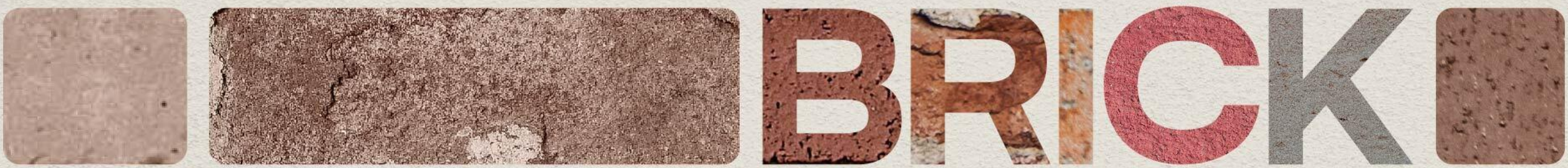
FAITH FOUNDATIONS  
FROM EZRA & HAGGAI



**BRICK**







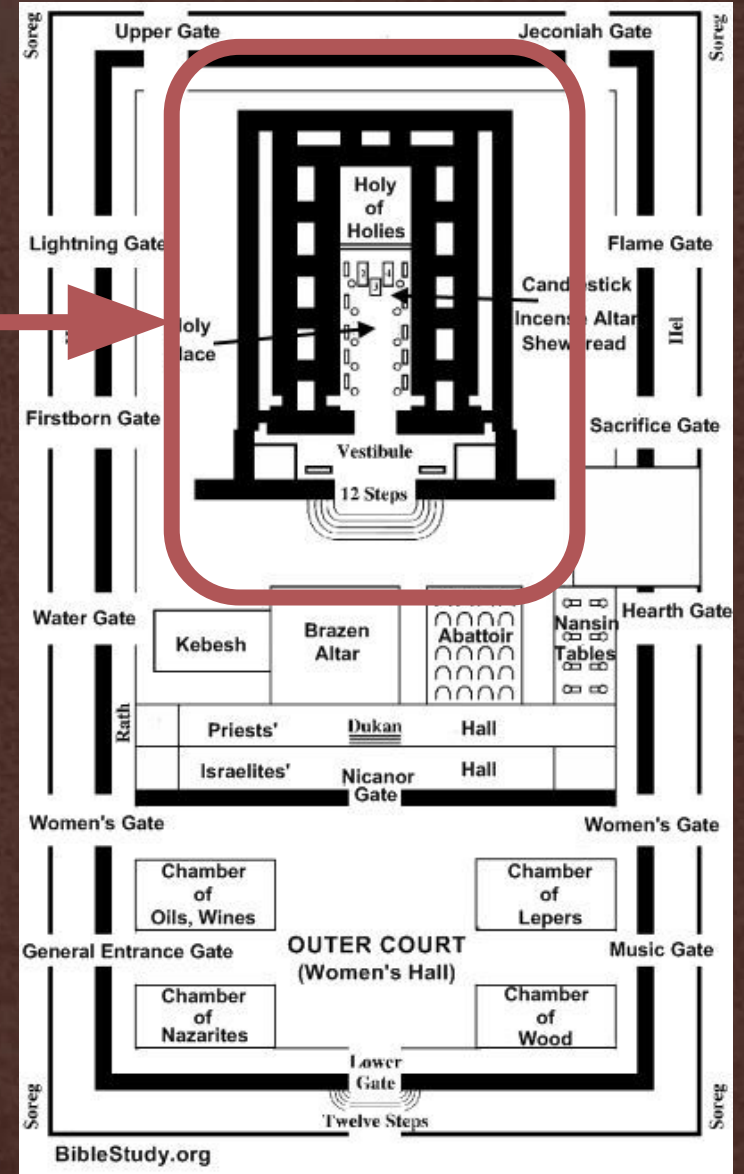


## Ezra 3:8-13

- 536 BC
- The Temple foundation is completed



Temple: 90' long, 30' wide, 45' high





But many of the...old men who had seen the first house, wept with a loud voice when they saw the foundation of this house being laid, though many shouted aloud for joy.

Ezra 3:12 (ESV)

## Ezra 4:1-5

- 536 – 530 BC
- Initial opposition; slow progress



## Ezra 4:6-24

- 530-520 BC
- Temple work stops under King Artaxerxes

## Ezra 5:1-6:12

- 520-516 BC
- Temple work resumes under the prophets Haggai and Zechariah – and King Darius.



If anyone alters this edict, a beam shall be pulled out of his house, and he shall be impaled on it, and his house shall be made a dunghill.

Ezra 6:11



## Ezra 6:13

- 516 BC
- The Temple is completed!



## When facing a setback or challenge....

1. Ask God for help, solutions, strength, wisdom.



## When facing a setback or challenge....

1. Ask God for help, solutions, strength, wisdom.
2. Focus on what you can control.



## When facing a setback or challenge....

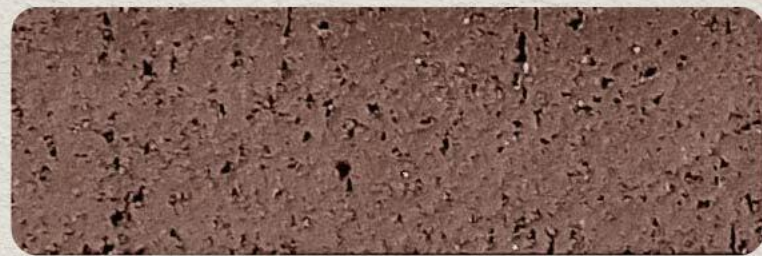
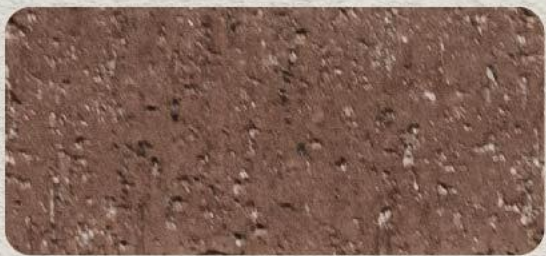
1. Ask God for help, solutions, strength, wisdom.
2. Focus on what you can control.
3. Seek help / wisdom from others.



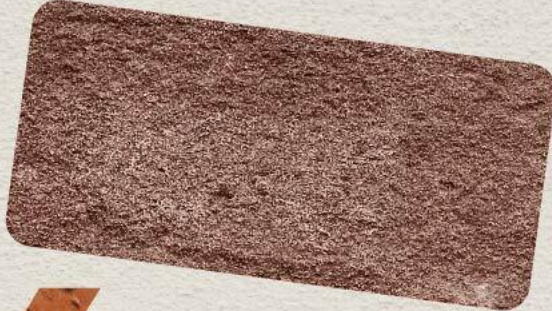
## When facing a setback or challenge....

1. Ask God for help, solutions, strength, wisdom.
2. Focus on what you can control.
3. Seek help / wisdom from others.
4. Get grit.



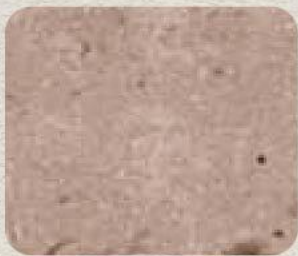


**BRICK**



**BY**

FAITH FOUNDATIONS  
FROM EZRA & HAGGAI



**BRICK**

