

Sunday, March 5, 2017 Worship Service



Central Lutheran Church
www.central-lutheran.org
715-723-9336

SOUL CRAVING - TRUSTING GOD FOR MY DEEPEST DESIRES WHAT DO YOU WANT? PART 1

We all want to know our lives matter - and that we lived into the fullest potential possible. Throughout all the ups and downs however, it's easy for our priorities to become misaligned. Lent is a season that invites us to reexamine our strongest desires - and realign ourselves with Jesus' call to follow. Ultimately he asks just one powerful question to consider... What do you want?

John 1:35-40 page #870

The next day John again was standing with two of his disciples, and as he watched Jesus walk by, he exclaimed, 'Look, here is the Lamb of God!' The two disciples heard him say this, and they followed Jesus. When Jesus turned and saw them following, he said to them, 'What are you looking for?' They said to him, 'Rabbi' (which translated means Teacher), 'where are you staying?' He said to them, 'Come and see.' They came and saw where he was staying, and they remained with him that day. It was about four o'clock in the afternoon. One of the two who heard John speak and followed him was Andrew, Simon Peter's brother.

Message Map

What Do You Want? (John 1:35-40)

The Ascent of Self - "God, bless me"

Three Driving Forces:

1. Ambition
2. Approval
3. Appetite

Disillusionment Initiated by Crisis - "God, save me"

Realization and Discovery - "God, use me"

Our Tuesday Morning Quilters are in need of donations. They are currently in need of mattress pads, light weight blankets and/or flannel sheets for quilt fillers, and fabric for creating quilt toppers. If you have any items you would like to donate they can be dropped off in the church office.



Let's keep the
conversation
going during Lent.



Ray Helgerson Youth Education Scholarship

Applications are now available at the Welcome Center or visit www.central-lutheran.org

High School Seniors & College Students are encouraged to apply.

Application Deadline is 3/30 @ 4 pm





Walking Together

500 for the 500th

March 18, 2017

Davies Center UWEC



Worship with Tangled Blue



GENEROSITY Dollar Club
DO GOOD TOGETHER
WWW.CENTRAL-LUTHERAN.ORG/DOLLAR

SPRING FORWARD
As Daylight Saving Time Begins!
Don't forget to change your clock. Next weekends!



BAPTISM LIFE APP CLASS SUNDAY MARCH 12TH @ 11:30 AM

Are you expecting a child or plan to have a baptism? Come to our required baptism class where you will learn a little bit more about baptism and the reason we do it here at Central.



1st Communion Class

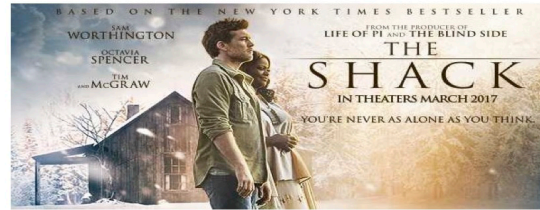
Sunday, April 2
11:15 am - 2 pm

Registration is required. Forms can be found on the "Say Yes" board.

A parent must attend with your child.

PRAYER SHAWL MINISTRY

A GROUP OF FAITHFUL CENTRAL SERVANTS KNIT AND/OR CROCHET COMFORT SHAWLS. SHAWLS ARE COMPLETED AND READY FOR REQUESTS. IF YOU WOULD LIKE TO REQUEST A SHAWL TO GIVE TO SOMEONE, PLEASE FILL OUT A REQUEST FORM FOUND IN THE CHURCH OFFICE. THE RECIPIENT DOES NOT HAVE TO BE A MEMBER OF CENTRAL, JUST A FRIEND, CO-WORKER OR PERSON IN NEED.



YOU'RE INVITED!

MONDAY, MARCH 13TH
@ 6:50PM



CHIPPEWA LOCATION
475 Chippewa Mall Drive
Chippewa Falls, WI 54729

IMA
431 E. Clairemont Ave. Suite A
Eau Claire, WI 54701
(715) 839-1006
chris@chrishasenberg.com
www.chrishasenberg.com

This movie is based on my favorite book. I want to make sure all of my friends, clients, and church family have a chance to see this inspirational movie.

Please be my **complimentary** guest at this showing!

Your admission will include a small popcorn and soda.

****Seating is limited to theater capacity, and will be filled on a first come, first served basis****

Gordy's Gift Cards in the amounts of \$10, \$25 or \$50 are available for purchase in the church office. Instead of paying with cash or credit at the store, you can use these gift cards. Central will receive 5% back from Gordy's from the sale of the gift cards. This money will be used to support the missions that are happening here at Central.



Faith & Family Life Group

starting March 5th

thedailydigi.com

Faith & Family Life Group will meet the 1st Sunday of each month immediately following the 10 am service in the Library. We will be discussing various topics centered around raising a family in the faith as well as be a place for parents to support each other. For more information contact Christine Johnson christine.johnson.m@gmail.com.

THRIVENT CHOICE®
Strengthening communities.
Changing lives.
[Learn How](#)

During this special time of year, we pause to reflect on all that we have to be thankful for. Family, friends, faith ...

One way eligible Thrivent Financial members can show their thanks is by directing Choice Dollars to Central Lutheran. If you're a Thrivent member who has Choice Dollars, take this opportunity to recommend where Thrivent distributes some of its charitable outreach funds by directing them to Central Lutheran. Deadline is 3/31.

4th Annual Glory Gals Retreat

A gals weekend away to renew your self, grow your faith, and have fun!

March 31 - April 2

Register @ GloryGals.org

Glory Gals is a women's retreat held at Luther Park Bible Camp in Chetek WI. It's focus is on learning about God, receiving tools and knowledge to help you walk the walk and talk the talk. This is a weekend filled with singing, breakout sessions, keynote speakers, videos, formal dinner, door prizes, fellowship, relaxation and an amazing amount of laughter!