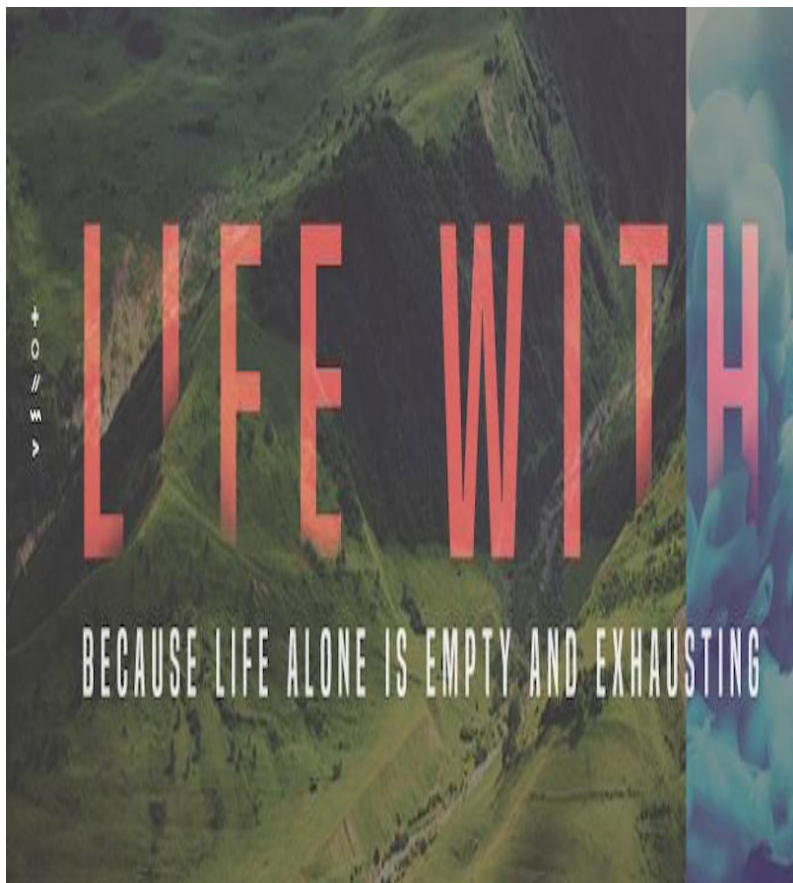


Wednesday, May 31, 2017  
Sunday, June 4, 2017  
Worship Service



Central Lutheran Church  
www.central-lutheran.org  
715-723-9336

### Reading: John 15: 1-11 page 878

‘I am the true vine, and my Father is the vine-grower. He removes every branch in me that bears no fruit. Every branch that bears fruit he prunes to make it bear more fruit. You have already been cleansed by the word that I have spoken to you. Abide in me as I abide in you. Just as the branch cannot bear fruit by itself unless it abides in the vine, neither can you unless you abide in me. I am the vine, you are the branches. Those who abide in me and I in them bear much fruit, because apart from me you can do nothing. Whoever does not abide in me is thrown away like a branch and withers; such branches are gathered, thrown into the fire, and burned. If you abide in me, and my words abide in you, ask for whatever you wish, and it will be done for you. My Father is glorified by this, that you bear much fruit and become my disciples. As the Father has loved me, so I have loved you; abide in my love. If you keep my commandments, you will abide in my love, just as I have kept my Father’s commandments and abide in his love. I have said these things to you so that my joy may be in you, and that your joy may be complete.

### Message Map: Life With: Because Life Alone is Empty and Exhausting

Part #1: You’ve Got One Job

Aaron Sturgis | #lifewith

**John 1:38:** Jesus looked around and saw them following. “What do you want?” he asked them.

**Proverbs 4:23:** Above all else, guard your heart, for everything you do flows from it.

#### Our Approach to God:

Life \_\_\_\_\_ God

Life \_\_\_\_\_ God

Life \_\_\_\_\_ God

**Legalism can only produce two things:** \_\_\_\_\_  
**if you’re honest and \_\_\_\_\_ if you’re not.**

#### The Goal:

Life \_\_\_\_\_ God

**John 15:4-5:** Remain in me, and I will remain in you. No branch can bear fruit by itself; it must remain in the vine. Neither can you bear fruit unless you remain in me. I am the vine; you are the branches. If a man remains in me and I in him, he will bear much fruit; apart from me you can do nothing.

You have one job in your spiritual life: \_\_\_\_\_

One of the greatest temptations in our spiritual life is to become \_\_\_\_\_ when we have success and \_\_\_\_\_ when we have failure.

**John 7:37-38:** If anyone is thirsty, let him come to me and drink. Whoever believes in me, as the Scripture has said, streams of living water will flow from within him.



### Baptism Life App Class

**Sunday, June 11th @ 11:15am.**

Are you expecting a child or plan to have a baptism? Come to our required baptism class where you will learn a little bit more about baptism and the reason we do it here at Central.

### Grandparents and Grandkids Painting Event

**Tuesday, June 13 | 1 - 3 PM**

Join us at the L.E. Phillips Senior Center for a fun afternoon of painting. Bowls will be decorated and given back to Feed My People to be used for the Empty Bowl Fundraiser. Bring \$1 per person donation to help defray the cost of the painting materials.

Kids, 4+ years are invited but must be with a grandparent or a parent. Join the fun, be creative, all while helping families in our community who struggle with hunger.

No experience necessary. Supplies will be provided.  
Call (715) 839-4909 to reserve your spot.

### CLCW Reminder

June 14 @ Noon - CLCW Potluck & Bible Study with Pastor Aaron. Business meeting to follow if necessary. All the women of Central Lutheran welcome to attend.

We are looking for Volunteers to help serve coffee and sweet treats between Sunday Worship Services during the Summer months. If you would like to help, please sign up at the Say Yes board. The dates we are in need of volunteers are: June 4, 11 & 18, July 2, 9, 16 & 30, August 6, 13, 20 & 27. You will be responsible for making the coffee and providing 10 dozen treats to be served.

**Please "Say Yes" to helping with Communion Set Up & Serving**



**Please sign up at the "Say Yes" Board.**

### PRAYER SHAWL MINISTRY

A GROUP OF FAITHFUL CENTRAL SERVANTS KNIT AND/OR CROCHET COMFORT SHAWLS. SHAWLS ARE COMPLETED AND READY FOR REQUESTS. IF YOU WOULD LIKE TO REQUEST A SHAWL TO GIVE TO SOMEONE, PLEASE FILL OUT A REQUEST FORM FOUND IN THE CHURCH OFFICE. THE RECIPIENT DOES NOT HAVE TO BE A MEMBER OF CENTRAL, JUST A FRIEND, CO-WORKER OR PERSON IN NEED.

### "Luther Park Worship Night"

**Wednesday, June 7th at 6:30pm**

Join us for a FUN Night of Worship



- Luther Park counselors will help lead worship.
- LPBC Counselors will be commissioned into their new positions.
- All of our youth that will be attending LPBC this summer will receive a blessing.

### Quilt Raffle

Benefitting the ministry of Luther Park Bible Camp

Drawing will be on Sunday, August 6, 2017 at 3:00 pm

Tickets \$5 each or 5 for \$20

Tickets can be purchased in the church office.



Gordy's Gift Cards in the amounts of \$10, \$25 or \$50 are available for purchase in the church office. Instead of paying with cash or credit at the store, you can use these gift cards. Central will receive 5% back from Gordy's from the sale of the gift cards. This money will be used to support the missions that are happening here at Central.



Central has an open position for a Small Group Ministry Coordinator. This person would be responsible for coordinating and developing Central's Small Group Ministry. This position would require 10 hours per week. Applications can be found in the office and the application deadline is 6/15.

# SOLES 4 SOULS

Central will once again have a collection box for the shared Chippewa Fall Mission Coalition event "Soles4Souls" starting on June 1 and continuing until June 24. Please drop off your new or gently used shoes in the box across from the office. All shoes donated will be distributed to international charities that help those in need.



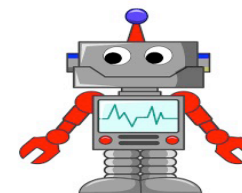
Sign up at the "Say Yes" board  
Wednesday, June 7 2 - 6 pm  
Sunday, July 30 3 - 6 pm

We'll start at Cty Highway P (Woodward ave) & Cty Highway OO and head south to the county line.

Please wear bright colors & sunscreen and bring water to drink. Come for an hour or the whole time. The more help we have the quicker we'll be done. Please email Molly Lee to RSVP or with questions at [lifegroups@central-lutheran.org](mailto:lifegroups@central-lutheran.org).



### OSLC & CLC KIDS ROBOT COMPETITION



With your parent's approval, use any supplies around your house to build a robot! ALL entries will be used during our VBS this summer.

**Robot Entries are due by Sunday, July 16th**  
1st, 2nd and 3rd Place Prizes will be awarded!!

Good luck and happy building!  
For more information or questions, email [whitney@central-lutheran.org](mailto:whitney@central-lutheran.org) or [jared@oslccf.net](mailto:jared@oslccf.net)