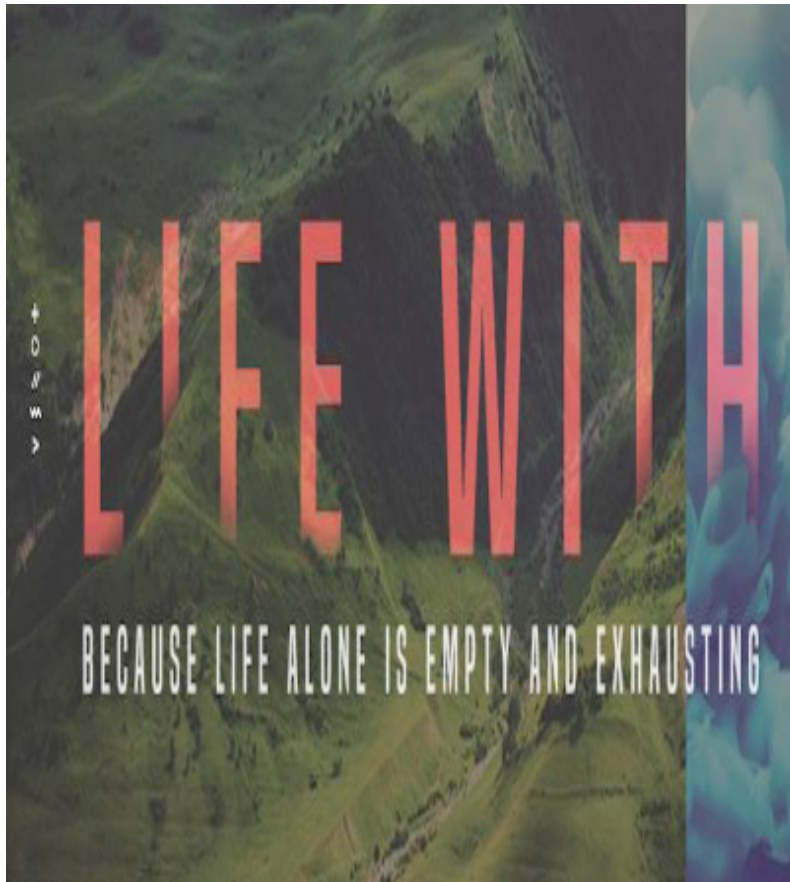


*Sunday, July 9, 2017
Worship Service*



Central Lutheran Church
www.central-lutheran.org
715-723-9336

**Reading: John 5:39-40 page # 867 &
John 20:19-20 page #883**

John 5:39-40

‘You search the scriptures because you think that in them you have eternal life; and it is they that testify on my behalf. Yet you refuse to come to me to have life.

John 20:19-20

When it was evening on that day, the first day of the week, and the doors of the house where the disciples had met were locked for fear of the Jews, Jesus came and stood among them and said, ‘Peace be with you.’ After he said this, he showed them his hands and his side. Then the disciples rejoiced when they saw the Lord.

This year during VBS we will be taking donations for the L.E. Phillips Career Development Center, which serves homeless families in the Chippewa Valley. The following are some items needed to help these families when they arrive at the CDC: diapers (any size), baby wipes, kid shampoo/body wash (tear free), peanut butter, kids juice boxes, crackers, granola bars, trail mix, protein bars, beef sticks, bottled water. Please place these items in the box outside the office.

**GADGETS
& GIZMOS**
Vacation Bible School

July 24 - 28, 2017

8:30 am - 12 NOON

Registration forms are at the Welcome Center or
online at www.central-lutheran.org

Message Map: God’s Voice

Aaron Sturgis | #lifewith

Scripture is _____ to us.

How we hear _____ is based on
how we were _____ in the past.

John 5:39-40: You study the Scriptures diligently because you think that in them you have eternal life. These are the very Scriptures that testify about me, yet you refuse to come to me to have life.

If you aren’t _____ with God in
_____ you will never be _____
with people in _____.

Matthew 27:45-46: From noon until three in the afternoon darkness came over all the land. About three in the afternoon Jesus cried out in a loud voice, “Eli, Eli, lema sabachthani?” (which means “My God, my God, why have you forsaken me?”)

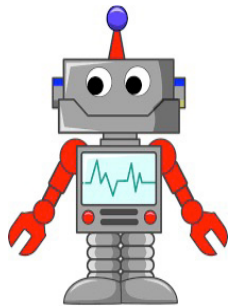
John 20:19-20: On the evening of that first day of the week, when the disciples were together, with the doors locked for fear of the Jewish leaders, Jesus came and stood among them and said, “Peace be with you!” After he said this, he showed them his hands and side. The disciples were overjoyed when they saw the Lord.



As Your Parents Age

Presented by Molly Lee
Thursday, July 13, 2017 @ 6:30 pm
Central Lutheran Church

When it's time to have 'the talk' with your parents, will you be prepared? As our parents age, there are conversations that aren't easy to start, but they need to happen nevertheless. Attend this interactive workshop and you'll gain tips for having healthy conversations with your parents' about their vision for the future. Become prepared to face potential challenges, all while keeping your parents' best interests in mind.



Robot Building Supplies Needed!

The kids will be making robots during VBS July 24 - 28 and we are in need of some supplies. If you have cans of any size (coffee, fruit, etc.), boxes, cords, wire, paper towel tubes, plastic lids from cool whip, butter or cottage cheese. Please drop them off in the box outside the office.

We are looking for Volunteers to help serve coffee and sweet treats between Sunday Worship Services during the Summer months. If you would like to help, please sign up at the Say Yes board. The dates we are in need of volunteers are: July 16 & 30, August 6, 13, 20 & 27. You will be responsible for making the coffee and providing 10 dozen treats to be served.



Please "Say Yes" to helping with Communion Set Up & Serving

Please sign up at the "Say Yes" Board.

PRAYER SHAWL MINISTRY

A GROUP OF FAITHFUL CENTRAL SERVANTS KNIT AND/OR CROCHET COMFORT SHAWLS. SHAWLS ARE COMPLETED AND READY FOR REQUESTS. IF YOU WOULD LIKE TO REQUEST A SHAWL TO GIVE TO SOMEONE, PLEASE FILL OUT A REQUEST FORM FOUND IN THE CHURCH OFFICE. THE RECIPIENT DOES NOT HAVE TO BE A MEMBER OF CENTRAL, JUST A FRIEND, CO-WORKER OR PERSON IN NEED.



Welcome Emily Watkins,
Central's Sound/Tech
Coordinator

Interested in joining
Central's Sound/Tech Team?
Contact Emily by email at
watkinnee@uwec.edu or
send a text to 715-864-5368.

Quilt Raffle

Benefitting the ministry of Luther Park Bible Camp

Drawing will be on Sunday, August 6, 2017 at 3:00 pm

Tickets \$5 each or 5 for \$20

Tickets can be purchased in
the church office.



Gordy's Gift Cards in the amounts of \$10, \$25 or \$50 are available for purchase in the church office. Instead of paying with cash or credit at the store, you can use these gift cards. Central will receive 5% back from Gordy's from the sale of the gift cards. This money will be used to support the missions that are happening here at Central.



Hospitality Team

Join Central's Hospitality Team
to welcome our partners and
guests to worship each week.

Sign Up at the "Say Yes" Board or email
Ashley Smith: ashley.marie.king@gmail.com

ADOPT-A-HIGHWAY Clean Up Event

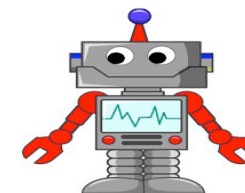
Sign up at the "Say Yes" board
Wednesday, June 7 2 - 6 pm
Sunday, July 30 3 - 6 pm

We'll start at Cty Highway P (Woodward ave) & Cty Highway OO and head south to the county line.

Please wear bright colors & sunscreen and bring water to drink. Come for an hour or the whole time. The more help we have the quicker we'll be done. Please email Molly Lee to RSVP or with questions at lifegroups@central-lutheran.org.



OSLC & CLC KIDS ROBOT COMPETITION



With your parent's approval, use any supplies around your house to build a robot! **ALL** entries will be used during our VBS this summer.

Robot Entries are due by Sunday, July 16th
1st, 2nd and 3rd Place Prizes
will be awarded!!

Good luck and happy building!
For more information or questions, email
whitney@central-lutheran.org or
jared@oslccf.net