

Wednesday, July 19, 2017
Sunday, July 23, 2017
Worship Service

Message Map: Extremely Emojinal - Part 2 Green with Envy

Aaron Sturgis | #Emojinal

There is no win in _____?"

Social media is to _____ as _____
is to fire.

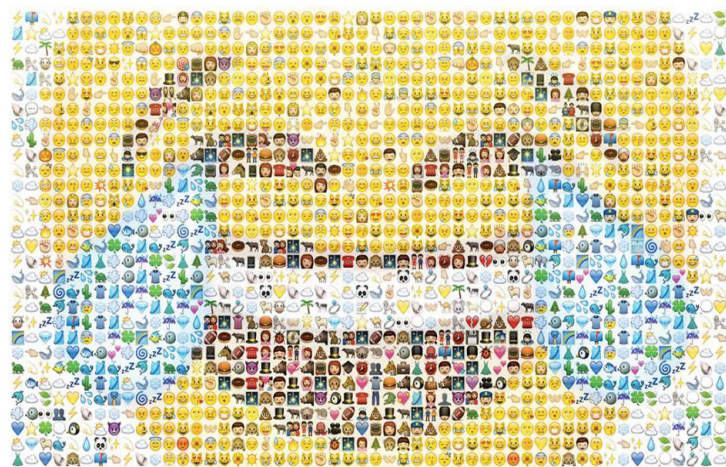
Envy is not a _____ issue.

Envy is not a _____ issue.

Envy is a _____ issue.

Galatians 4:3-7 And that's the way it was with us before Christ came. We were the children; we were slaves to the basic spiritual principles of this world. But when the right time came, God sent his Son, born of a woman, subject to the law. God sent him to buy freedom for us who were slaves to the law, so that he could adopt us as his very own children. And because we are his children, God has sent the Spirit of his Son into our hearts, prompting us to call out, "Abba, Father."

I am: _____ .



EXTREMELY EMOJINAL

How to face your feelings and still 🤔🙄👍👏



Central Lutheran Church
www.central-lutheran.org
715-723-9336



July 24 - 28, 2017
8:30 am - 12 NOON
Registration forms are at the Welcome Center or
online at www.central-lutheran.org

This year during VBS we will be taking donations for the L.E. Phillips Career Development Center, which serves homeless families in the Chippewa Valley. The following are some items needed to help these families when they arrive at the CDC: diapers (any size), baby wipes, kid shampoo/body wash (tear free), peanut butter, kids juice boxes, crackers, granola bars, trail mix, protein bars, beef sticks, bottled water. Please place these items in the box outside the office.

Join Central Lutheran's Relay for Life Team at the Relay For Life of Chippewa County at the Northern WI State Fairgrounds on Friday, July 28, 2017 from 5 - 11 pm.

Schedule of Events for the evening:

- 6 pm opening ceremony
- 7:15 pm-ish Survivor walk line up
- 9:45 pm Luminaria Ceremony
- 11 pm Closing Ceremony

Bounce houses & silent auction again this year, along with bingo! Sign up to walk (at the "Say Yes" Board) or just join us for the event! Multiple people can sign up to walk at the same time.

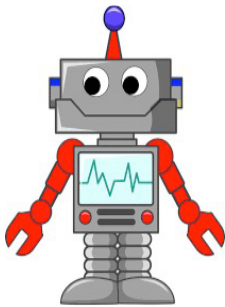
Quilt Raffle

Benefitting the ministry of Luther Park Bible Camp

Drawing will be on Sunday, August 6, 2017 at 3:00 pm

Tickets \$5 each or 5 for \$20

Tickets can be purchased in the church office.



Robot Building Supplies Needed!

The kids will be making robots during VBS July 24 - 28 and we are in need of some supplies. If you have cans of any size (coffee, fruit, etc.), boxes, cords, wire, paper towel tubes, plastic lids from cool whip, butter or cottage cheese. Please drop them off in the box outside the office.

We are looking for Volunteers to help serve coffee and sweet treats between Sunday Worship Services during the Summer months. If you would like to help, please sign up at the Say Yes board. The dates we are in need of volunteers are: July 16 & 30, August 6, 13, 20 & 27. You will be responsible for making the coffee and providing 10 dozen treats to be served.

Please "Say Yes" to helping with Communion Set Up & Serving

Please sign up at the "Say Yes" Board.



PRAYER SHAWL MINISTRY

A GROUP OF FAITHFUL CENTRAL SERVANTS KNIT AND/OR CROCHET COMFORT SHAWLS. SHAWLS ARE COMPLETED AND READY FOR REQUESTS. IF YOU WOULD LIKE TO REQUEST A SHAWL TO GIVE TO SOMEONE, PLEASE FILL OUT A REQUEST FORM FOUND IN THE CHURCH OFFICE. THE RECIPIENT DOES NOT HAVE TO BE A MEMBER OF CENTRAL, JUST A FRIEND, CO-WORKER OR PERSON IN NEED.

Bowl Painting Event



Join us on July 17th or August 15th to paint bowls for Feed My People's Empty Bowls Fundraiser. This is a free event but a suggested donation of \$5 is encouraged to help cover the cost of painting materials. No experience necessary. Supplies will be provided. Space is limited so be sure to reserve your spot!

July 17, 2017 @ Eau Claire Regional Arts Center
(316 Eau Claire St, Eau Claire) from 6:00-8:30 PM
Call Becca at (715) 835-9415 ext. 112
or email rebecca@fmpfoodbank.org to reserve your spot.

August 15, 2017 @ L.E. Phillips Senior Center
(1616 Bellinger St., Eau Claire) from 1:00-3:00 PM
Call The Senior Center at (715) 839-4909 ext. 112 to reserve your spot.

Gordy's Gift Cards in the amounts of \$10, \$25 or \$50 are available for purchase in the church office. Instead of paying with cash or credit at the store, you can use these gift cards. Central will receive 5% back from Gordy's from the sale of the gift cards. This money will be used to support the missions that are happening here at Central.



Hospitality Team

Join Central's Hospitality Team to welcome our partners and guests to worship each week.

Sign Up at the "Say Yes" Board or email Ashley Smith: ashley.marie.king@gmail.com

ADOPT-A-HIGHWAY Clean Up Event

Sign up at the "Say Yes" board
Wednesday, June 7 2 - 6 pm
Sunday, July 30 3 - 6 pm

We'll start at Cty Highway P (Woodward ave) & Cty Highway OO and head south to the county line.

Please wear bright colors & sunscreen and bring water to drink. Come for an hour or the whole time. The more help we have the quicker we'll be done. Please email Molly Lee to RSVP or with questions at lifegroups@central-lutheran.org.

GADGETS & GIZMOS

OSLC & CLC KIDS ROBOT COMPETITION

With your parent's approval, use any supplies around your house to build a robot! ALL entries will be used during our VBS this summer.

Robot Entries are due by Sunday, July 16th
1st, 2nd and 3rd Place Prizes will be awarded!!

Good luck and happy building!
For more information or questions, email whitney@central-lutheran.org or jared@oslccf.net

