


ELEPHANT

STUDY BOOKLET

FAST FACTS

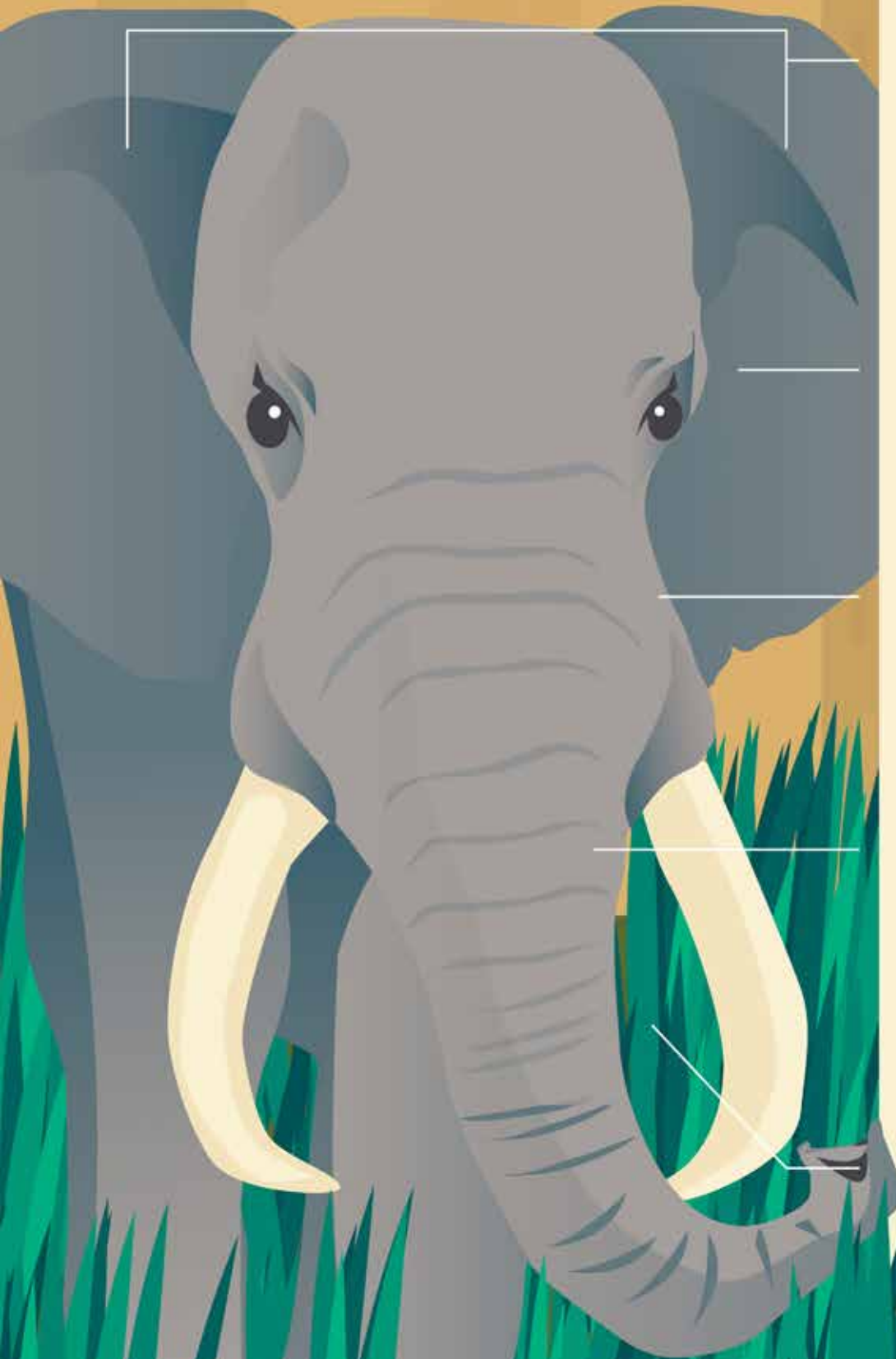
[amazing creation]



FAST FACTS: ELEPHANT STUDY BOOKLET CONTENTS

Elephant Facts	4
Part 1	6
Part 2	10
Part 3	15
Part 4	19
Part 5	24
Part 6	29

ELEPHANT FACTS



EARS

The Elephant's ears are one of God's most amazing air conditioners! They are filled with a web of tiny blood vessels that are close to the skin surface which allows them to cool their body temperature very quick.

EYES

The Elephant's eyesight is pretty poor. They can only see things clearly up to about 30 feet.

NOSE

Believe it or not, an Elephant has a sense of smell that is believed to be four times better than a Bloodhound!

TEETH

The Hippo's teeth are made of ivory, and they are razor sharp. Their lower canine teeth are curved and can be up to 20 inches long!

MOUTH

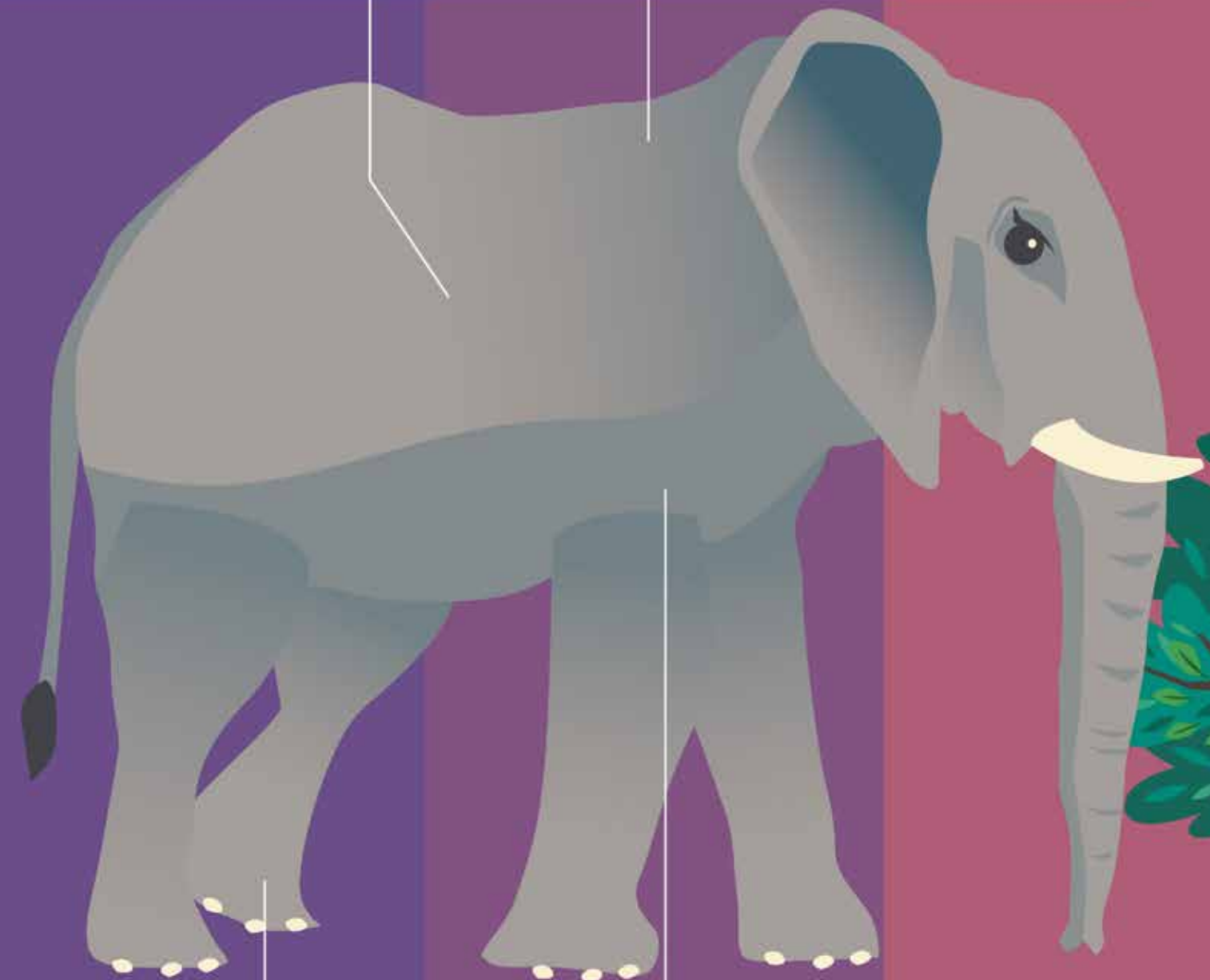
Elephants love to eat! Surprising, right? They will spend up to 20 hours a day snacking, and will eat 400 – 600 pounds of vegetation.

SKIN

The Elephant has tough skin, but it is very sensitive. They need regular "mud baths" to keep their skin moist, and to protect themselves from bugs and the sun.

BODY

African elephants stand anywhere from 10-13 feet tall and weigh anywhere from 8,000 to 15,000 pounds.



LEGS AND FEET

Elephant's can't rotate their front legs. They also have 6 toes to help distribute their massive weight.

STOMACH

Incredibly, the massive stomach of the Elephant, which can stretch up to 62 feet, isn't where most of the digestion takes place. In reality, this is mostly just for food storage.

PART 1

African Elephants are the largest land mammal on the planet!



QUICK QUIZ

- 1 What animal is the world's largest mammal? Which animals are #2 and #3?
- 2 True or False: African Elephants are smaller than Asian Elephants?
- 3 How much can elephants weigh?
- 4 How tall can African elephant stand? How about Asian elephants?
- 5 What three areas on an elephants body will tell you which type of elephant you are looking at?

DIGGING DEEPER

- 1 **Review the Creation story in Genesis 1.** On what day did God create the Elephant?
- 2 The elephant is extremely heavy! Look up other objects that share the weight of the African and Asian elephants.

PREVIEW

What characteristics do you think can help you tell the difference between an African and Asian elephant?

ANSWERS



PART 1: ANSWER SHEET

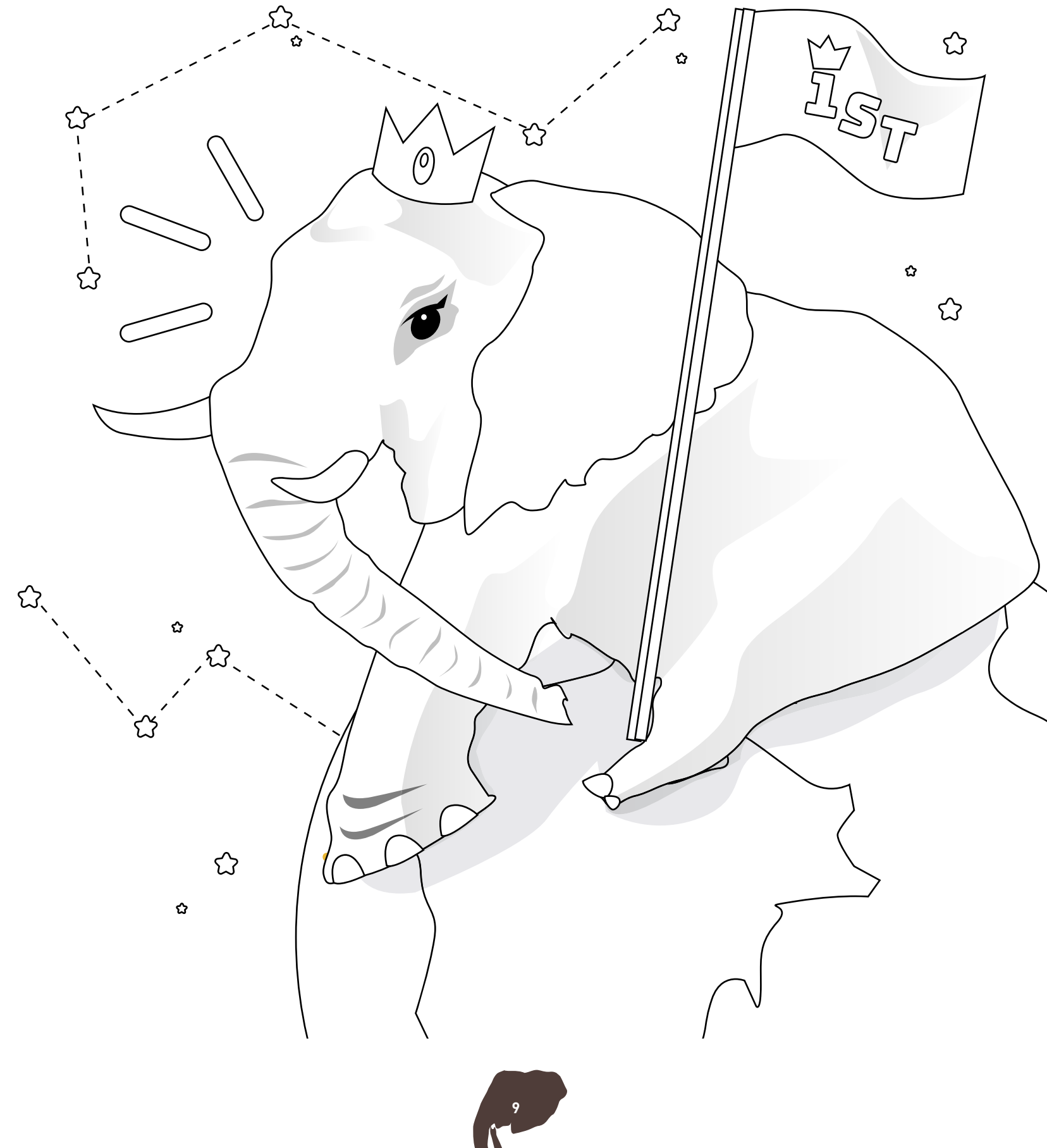
QUICK QUIZ

1. Elephant, followed by White Rhinoceros, then Hippopotamus.
2. False, while both are very large, the African elephants are bigger than their Asian counterparts.
3. 5,500 pounds which is the same as a Cadillac Escalade!
4. African Elephants can be 13 feet tall, and Asians 10 feet tall.
5. Top of the head, tip of trunk, ears

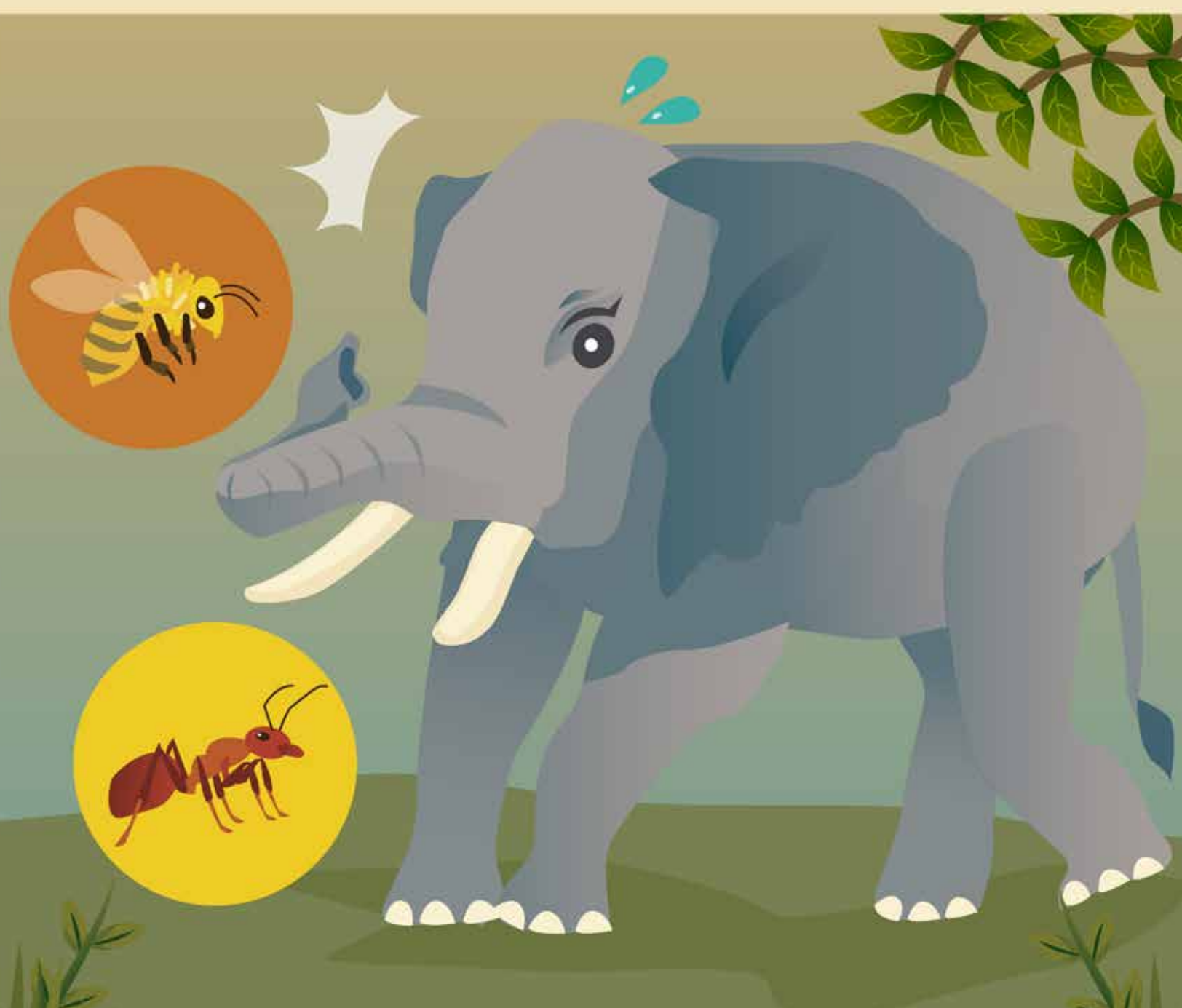
DIGGING DEEPER

1. The Elephant was created on day 6 with the “livestock and creeping things and beasts of the earth according to their kinds.” (Genesis 1:24b)
2. a. Asian Elephant – 5,000-7,000 lbs.: Forklift, Large Meteor, Hovercraft, Limo, Truck
b. African Elephant – 9,000-14,000 lbs: Monster Truck, Helicopter, School Bus, Small Jet

COLORING PAGE



PART 2



Believe it or not, Elephants don't eat peanuts, and they aren't afraid of mice! (But they are afraid of ants and bees!)

QUICK QUIZ

- 1 What seemingly simple task can an elephant do that only three other animals and humans are known to be able to do?
- 2 ****Bonus**** What are the 3 other creatures that have this skill?
- 3 How many bumps on their head do African elephant have? How about Asian elephants?
- 4 Which species of elephant has larger ears?
- 5 How is the trunk of the African elephant different than the trunk of the Asian elephant?

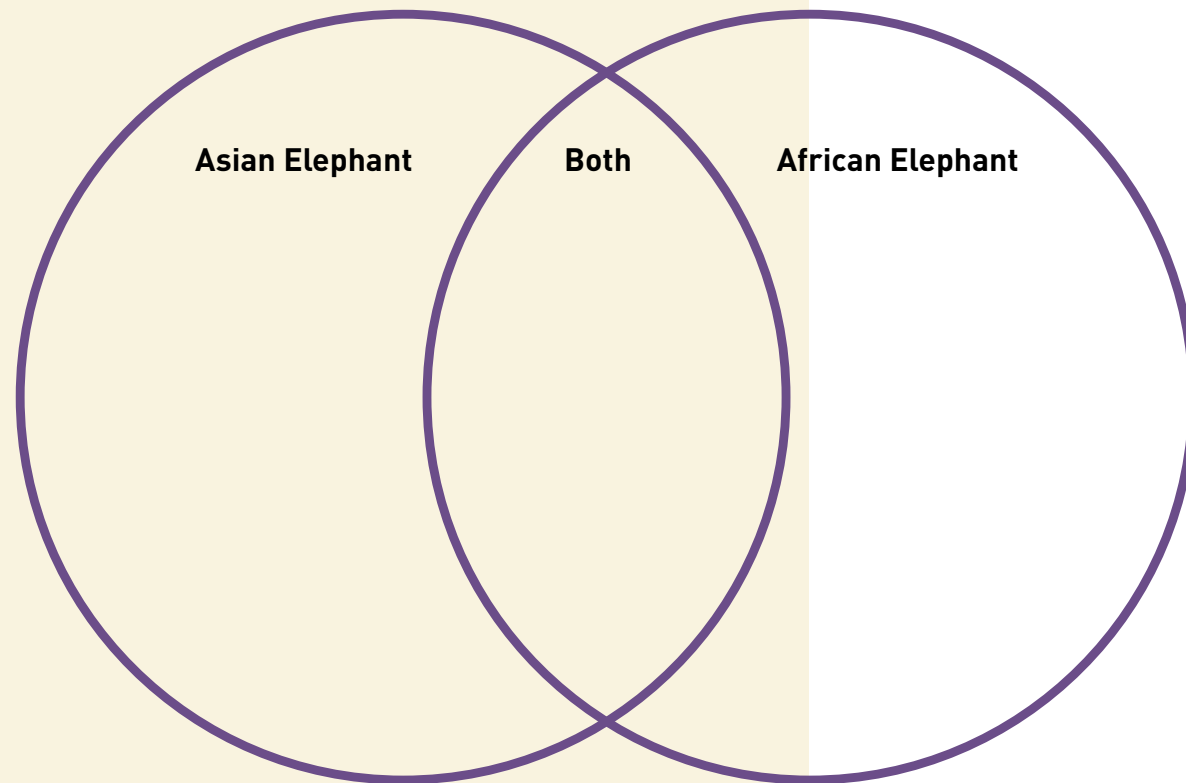
DIGGING DEEPER

- 1 Research – The Elephant has the largest brain of any land animal and is typically identified as one of the smartest! Elephants have been seen to problem solve, have a great memory, maintain organized clans, and even communicate with each other. Look up and read some of these amazing stories.

ANSWERS



- 2** Using the information from this video and “The Elephant part 1” complete this Venn Diagram identifying the differences and similarities between African and Asian Elephants



PREVIEW

List some things that you think the elephant uses their trunk for.



ANSWERS

PART 2: ANSWER SHEET

QUICK QUIZ

1. They can recognize themselves in the mirror.
2. ****Bonus**** Dolphins, some Great Apes, and the Magpie
3. One, Two
4. The African elephant has much larger ears, and look like the continent of Africa.
5. African elephant - two “fingers” - Asian elephant – one finger.

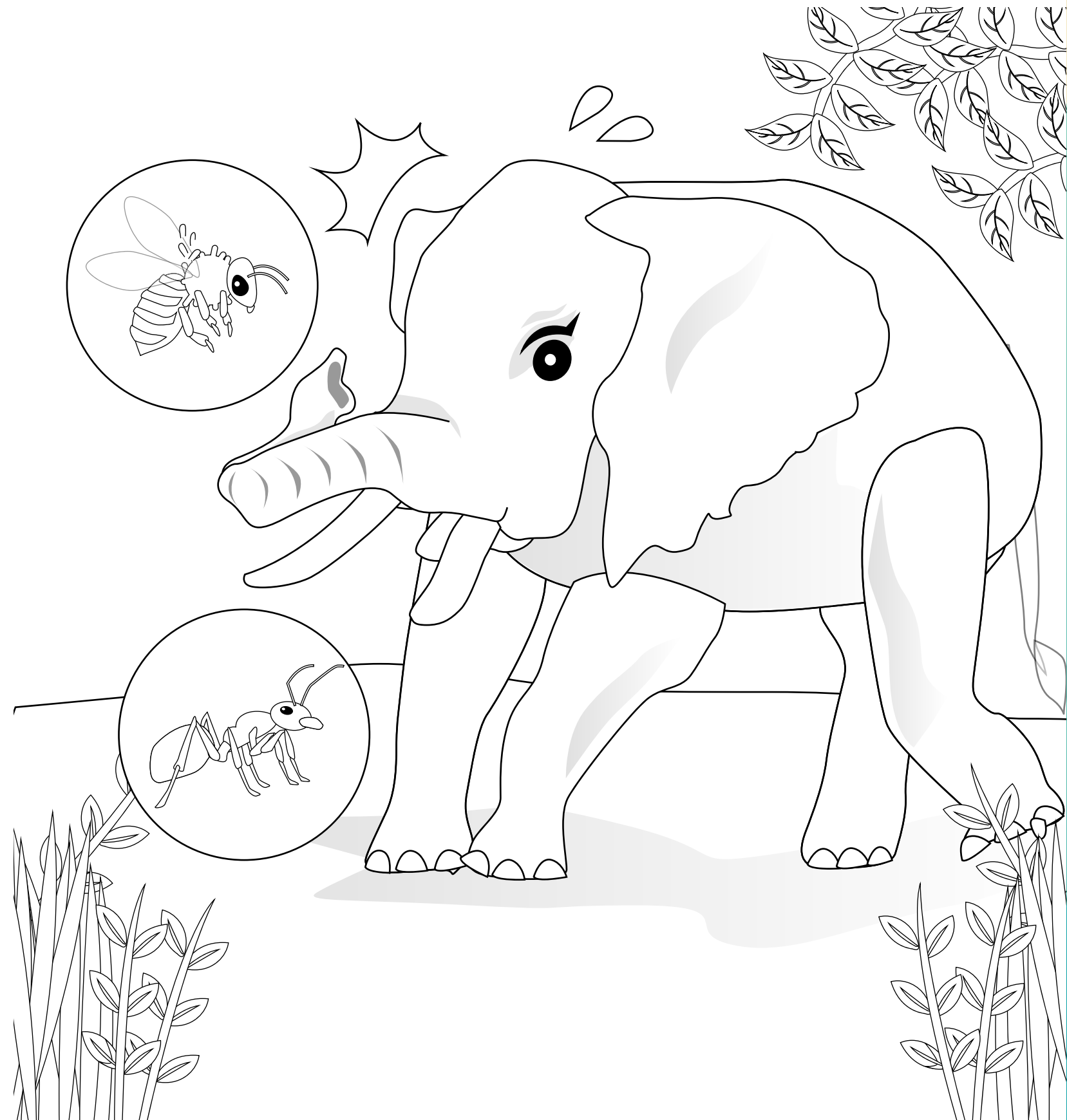
DIGGING DEEPER

1. Various answers/stories
2. a. African Elephant: two-fingers on the trunk, large “Africa-shaped” ear, single bump on top of head, up to 13 feet tall.
b. Asian Elephant: one- finger on the trunk, smaller ears, two bumps on top of head, up to 10 feet tall.
c. Both: Very heavy animals, have a trunk, are very tall, have large ears

REINFORCE

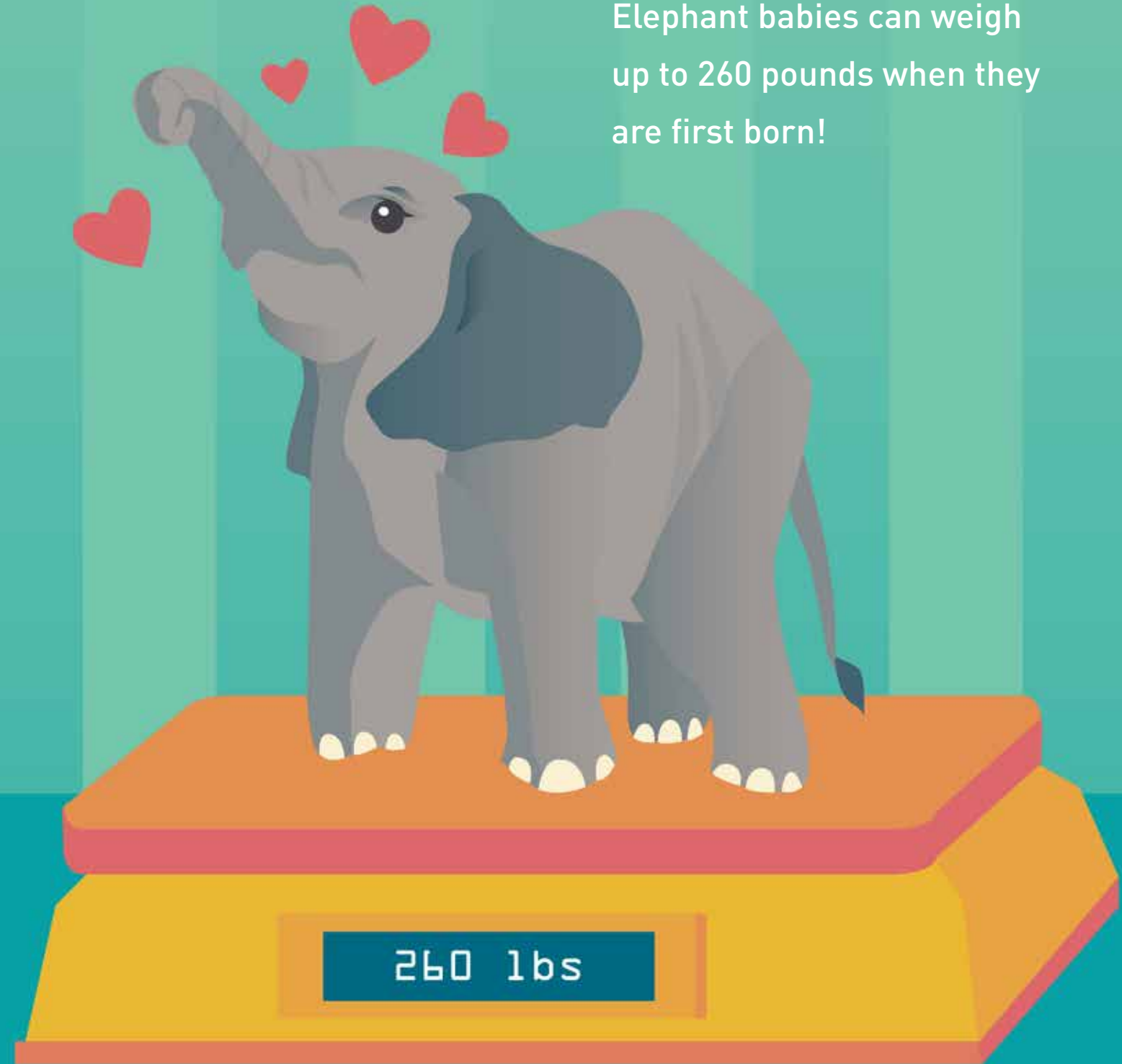
1. What are the three largest land mammals and in what sequence? **Elephant, White Rhinoceros and Hippo**
2. How tall can African elephants stand? Asian Elephants? **13 feet, 10 feet**





PART 3

Elephant babies can weigh up to 260 pounds when they are first born!



QUICK QUIZ

- 1 Name some of the uses of an elephant's trunk.
- 2 How much does the elephant's trunk weigh?
- 3 How many major muscles control the up, down, and sidewise movement of the trunk of the elephant?
- 4 About how many other muscles make up the trunk of an elephant?

DIGGING DEEPER

- 1 **Read Romans 1:20, Psalm 148:7-10 and Job 12:7-10.**
Why is it important for us to study the complexities that we find in animals such as the elephant?
- 2 Many evolutionists believe the elephant trunk started out as a stub and the elephant slowly adapted a longer and longer nose. Based on what you have learned so far, discuss why this explanation would be highly unlikely based on the trunk's characteristics alone.

PREVIEW

How much weight do you think the elephant's trunk can lift?



ANSWERS

PART 3: ANSWER SHEET

QUICK QUIZ

1. An elephant can use its trunk as a hand, arm, voice, snorkel!
2. 500 pounds
3. Four large external muscles
4. Up to 150,000.

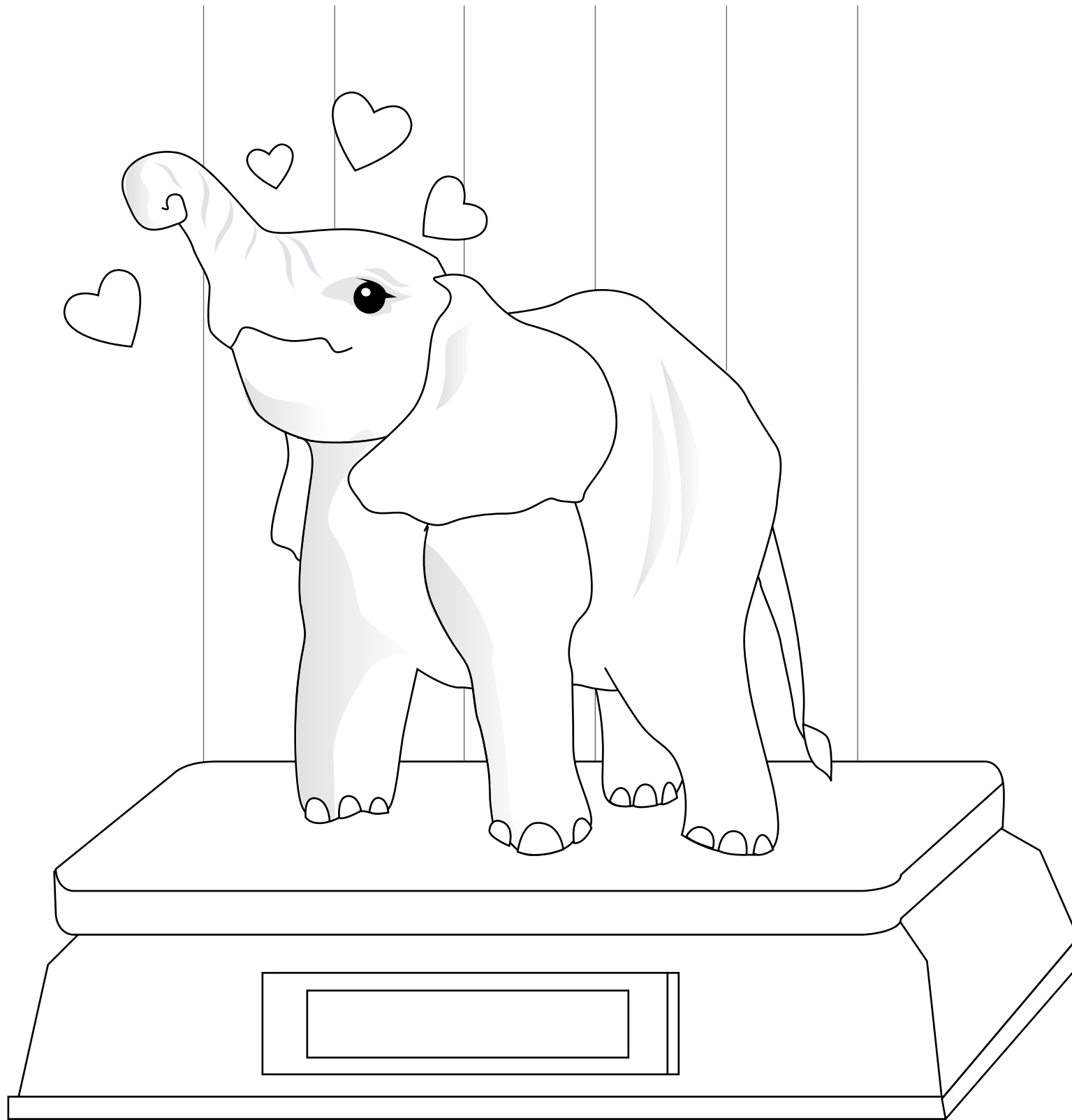
DIGGING DEEPER

1. All of these verse point to the fact that we can learn about the great power and majesty of God through the things he has created. Every part of creation offers praise to God and brings glory to his name.
2. The elephant uses its trunk for so many different things! The slow process of evolution would prohibit elephants from accomplishing certain tasks. The number and precision of the trunks internal muscles also are the sign of design and not a slow random chance process.

REINFORCE

1. How many fingers on an African Elephants trunk? – Asian ?
African – 2 fingers,
Asian – 1 finger
2. What other animals can recognize themselves in the mirror?
Some of the great apes, Dolphin and Magpies.





PART 4



Elephants can get sunburned, just like us, so to protect themselves from the sun and insects they will throw sand and dirt on themselves.

QUICK QUIZ

- 1 Review – How many muscles are in the elephant’s trunk for it to work properly?
- 2 How many pounds can an elephant pick up off of the ground?
- 3 Which sense of the Elephants is believed to be better than all other land animals?
- 4 How do elephants make different sounds with their trunks?
- 5 What does it mean if an elephant is waving its trunk or holding it in the air?
- 6 What does it mean when the elephant tucks his trunk under his chin?



ANSWERS

DIGGING DEEPER

Scientists have recently discovered that elephants can communicate with one another over a great distance, even miles using low-frequency sounds. Why do you think God gave them the ability to do that? How does it show God’s perfect design?

PREVIEW

What do you think elephants use their ears for besides hearing?



ANSWERS

PART 4: ANSWER SHEET

QUICK QUIZ

1. 150,000 muscles!
2. 600
3. Smell. Four times greater than the Bloodhound!
4. Elephants modify the width of their nostrils to change the sound.
5. This is a warning signal, back off!
6. Charge! You didn't back off.

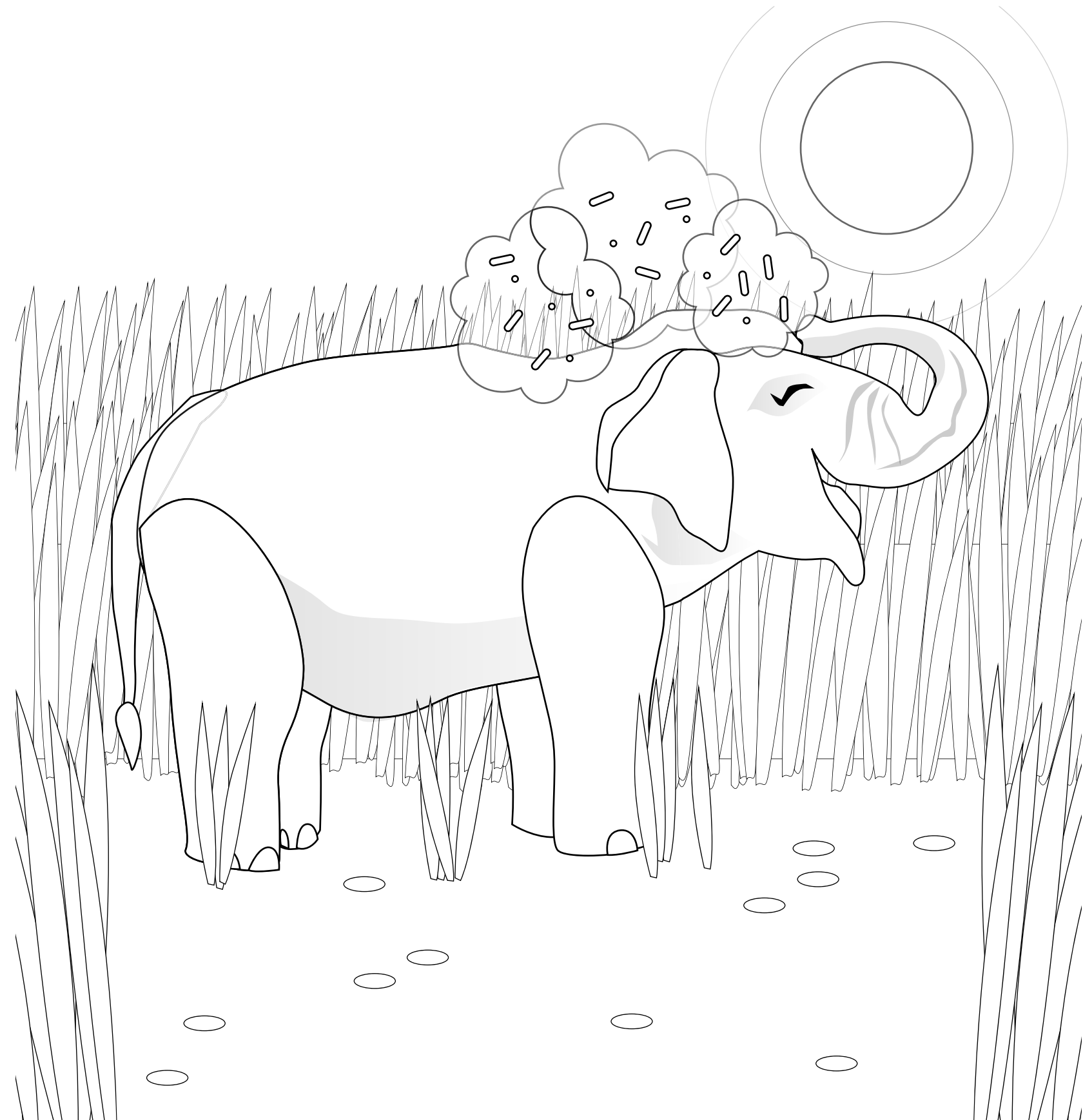
DIGGING DEEPER

This can help elephants warn one another of danger so they know ahead of time. It is difficult to hide as an elephant! It also allows them to maintain their "clan."

REINFORCE

1. How much does the trunk of an elephant weigh? **500 pounds**
2. What are some of the activities elephants use their trunks for? **An elephant can use its trunk as a hand, arm, voice, snorkel!**

COLORING PAGE



PART 5



Elephants have six toes, not five like most humans!



QUICK QUIZ

- 1 Name another purpose for elephant ears other than hearing?
- 2 T/F All elephant's ears, within their species, are identical.
- 3 What is the most important purpose of the elephant's ears?
- 4 T/F Elephants sweat like humans to control their body temperature.
- 5 How are their ears used to control their body temperature?
- 6 How long does it take for an elephant to run all of the blood in their body through their ears?

DIGGING DEEPER

- 1 An elephant that didn't have the blood vessels or right sized ears would not be able to stay cool in the hot climate. God designed the elephants to survive extreme heat.

ANSWERS

- 2** Wrinkly skin provides a larger body surface to dispel heat and can trap and retain moisture longer than smooth skin.

PREVIEW

Do you think an elephant could walk on ice without slipping? Why or why not?

ANSWERS

PART 5: ANSWER SHEET

QUICK QUIZ

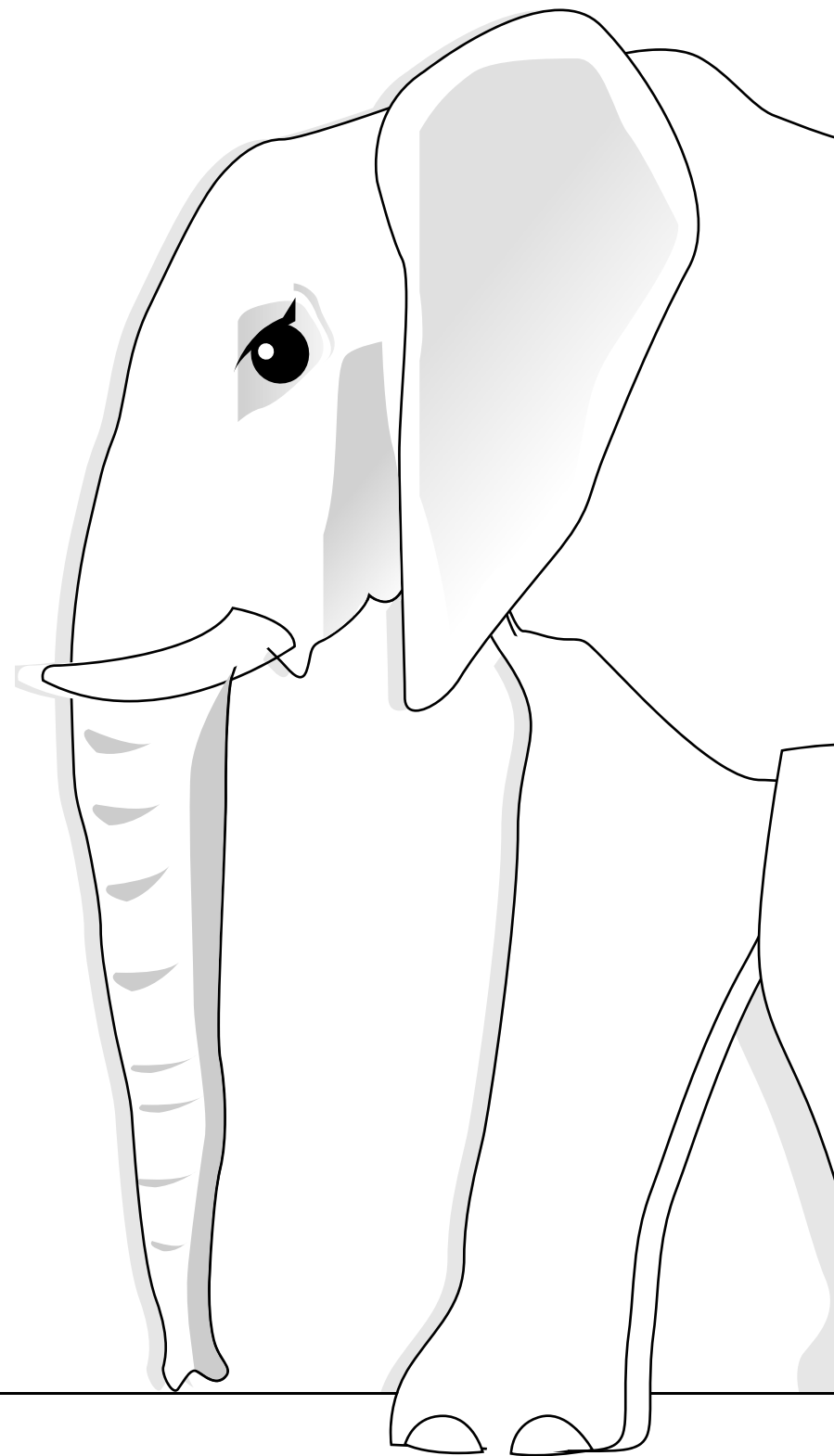
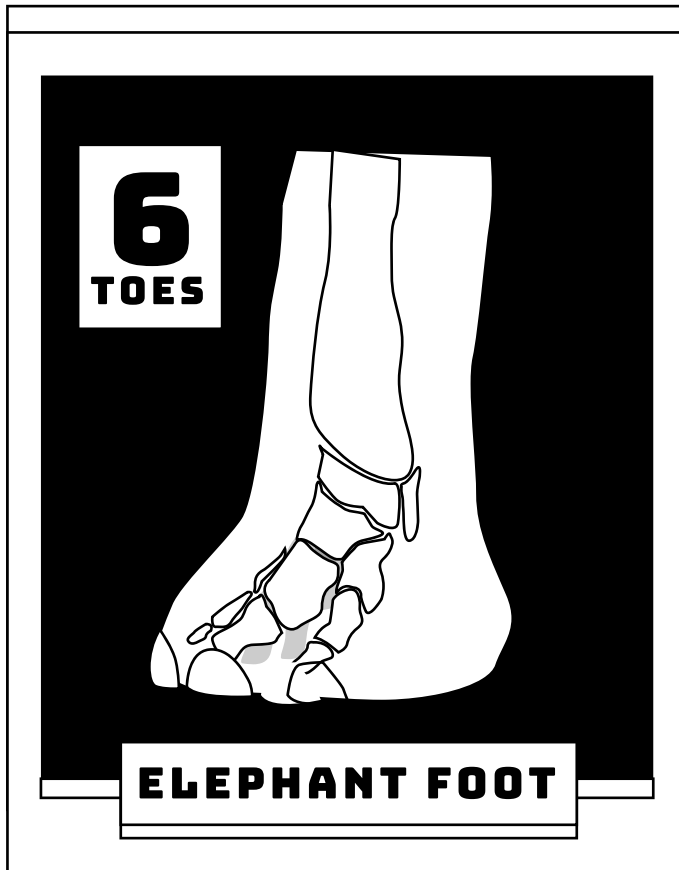
1. Warning to others, Identification, Air Conditioning
2. False
3. Air Conditioner
4. False
5. Warm blood is pumped into the ears and is cooled in the blood vessels that are close to the skin.
6. About 20 minutes.

DIGGING DEEPER

1. An elephant that didn't have the blood vessels or right sized ears would not be able to stay cool in the hot climate. God designed the elephants to survive extreme heat.
2. Wrinkly skin provides a larger body surface to dispel heat and can trap and retain moisture longer than smooth skin.

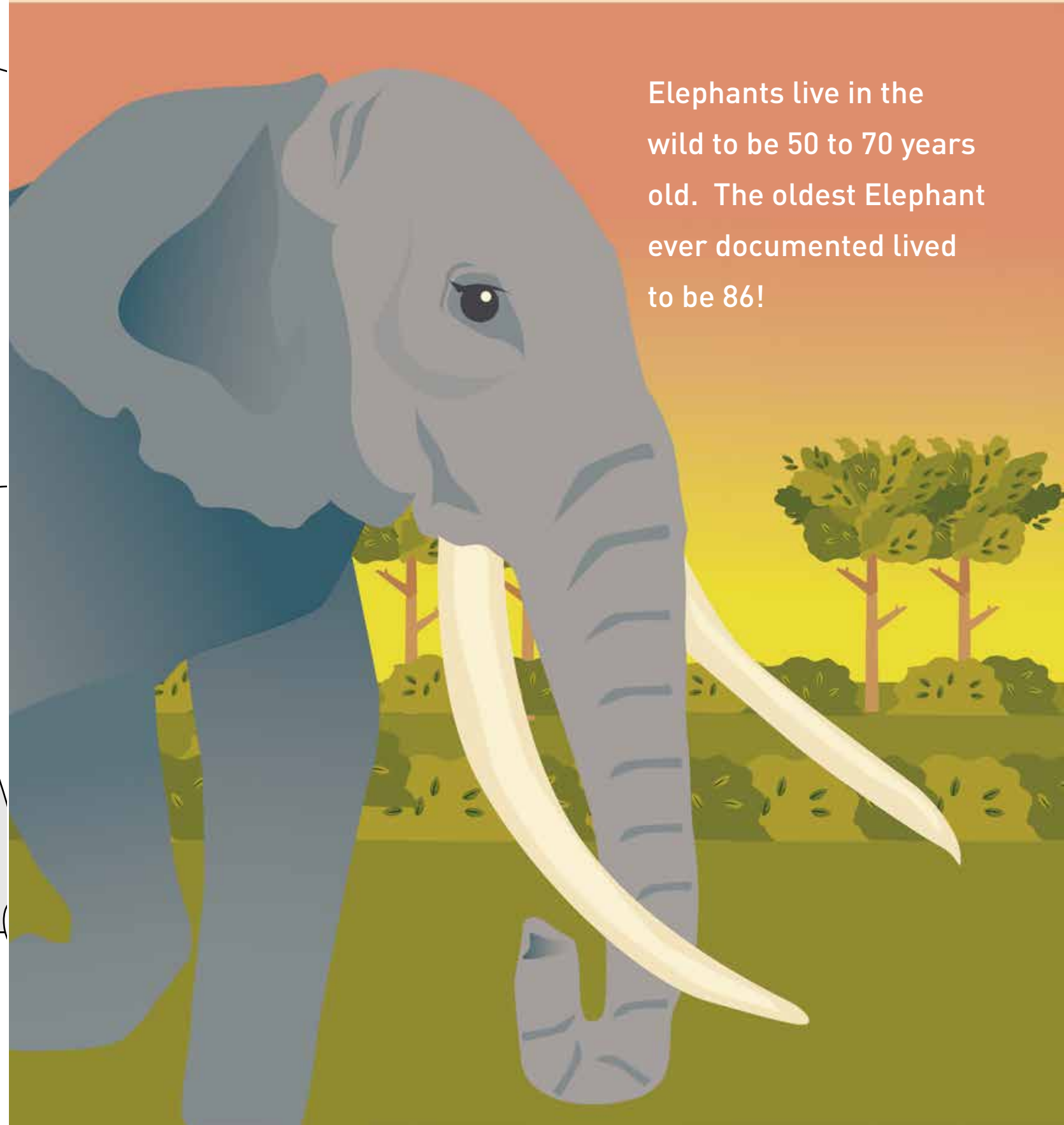
REINFORCE

1. How many pounds can an elephant pick up off of the ground? **600 pound**
2. Which sense of the Elephants is believed to be better than all other land animals?
Smell. Believed to be four times greater than the Blood hound.



PART 6

Elephants live in the wild to be 50 to 70 years old. The oldest Elephant ever documented lived to be 86!



QUICK QUIZ

- 1 What is the foot of an elephant the same size as?
- 2 T/F The Elephant walks flat-footed.
- 3 Elephants have a natural “platform” at the base of their heel, what is it made out of?
- 4 Why can the elephant walk on smooth surfaces without falling?

DIGGING DEEPER

- 1 What do you think the purpose of the fatty platform “shock absorber” is? This allows elephants to walk very quietly and muffle the sound of anything they are stepping on. Helps support the body weight. It also allows them to walk in deep mud because when the foot is being withdrawn the circumference becomes smaller reducing the suction.
- 2 ****Research**** There are so many more interesting things about the elephant. Look up more interesting information about their communication, feet, trunks, and clan relationships!



ANSWERS

PART 6: ANSWER SHEET

QUICK QUIZ

1. Welcome mat
2. False
3. Fat
4. Elephant feet have many ridges on them just like many of our shoes that helps them grip smooth surfaces, such as ice.

DIGGING DEEPER

1. This allows the elephants to walk very quietly and muffle the sound of anything they are stepping on. When you are as big as an elephant, this helps them stay unnoticed for a longer amount of time. This also helps support their body weight and allows them to walk in deep mud because when the foot is being withdrawn, the circumference becomes smaller which reduces the suction.
2. Answers will vary.



COLORING PAGE

REINFORCE

1. Why is wrinkly skin important for an elephant?

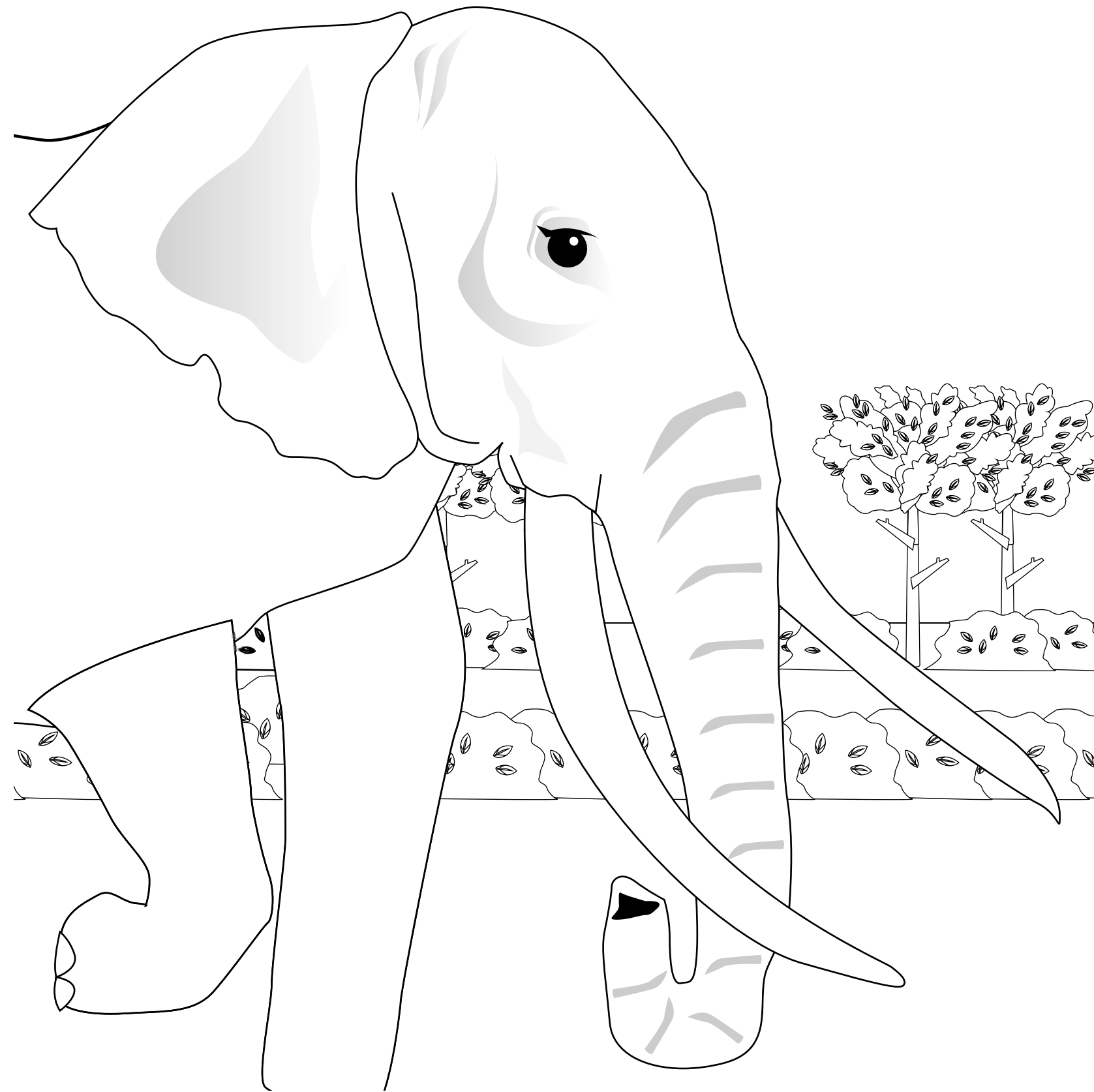
Because, wrinkly skin provides a larger body surface to dispel heat and can trap and retain moisture longer than smooth skin.

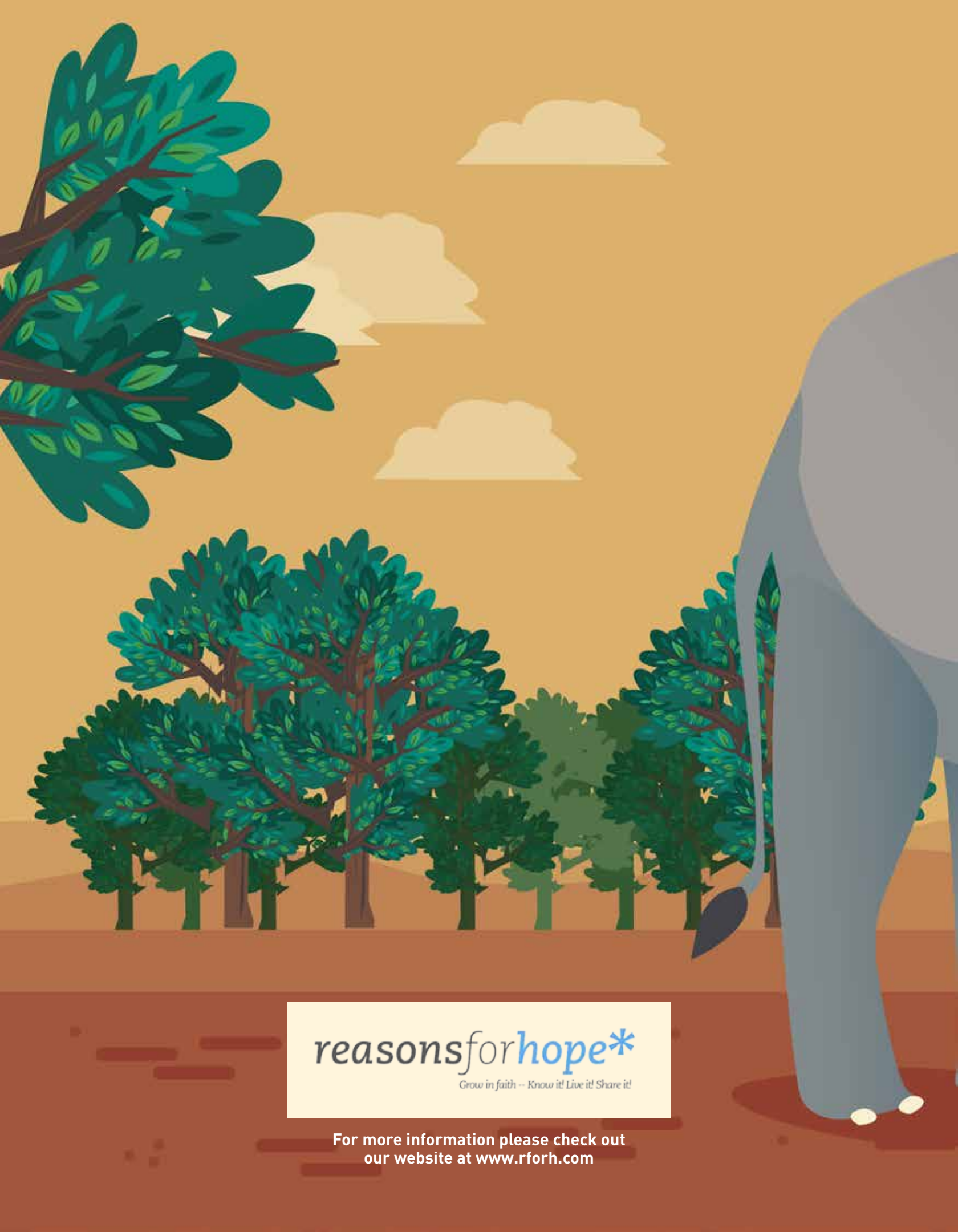
2. How long does it take for an elephant to run all of the blood in their body through their ears?

About 20 minutes.

PUTTING IT TOGETHER

Have your student/child list as many of the design features that were covered in this series. Talk with them about which worldview these design features are consistent with. Naturalistic processes or Creation?





reasonsforhope*

Grow in faith -- Know it! Live it! Share it!

For more information please check out
our website at www.rforh.com