

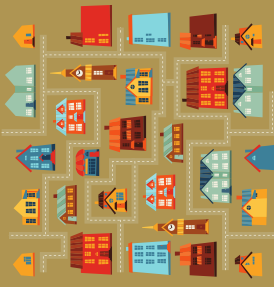
DISCIPLEMAKER TRAINING



WORKBOOK

The Community

Resistant



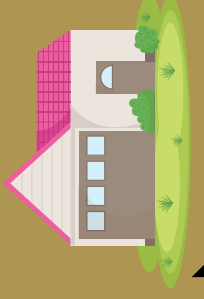
Town

Neutral



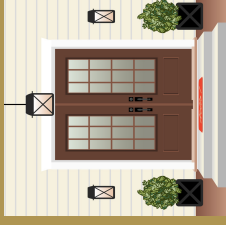
Neighborhood

Curious



Yard

Open



Porch

Discipline Pathway

Responsive



Living Room

Growing



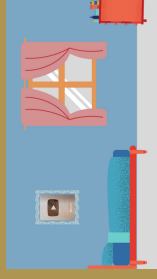
Dining Room

working



Laundry

Multiplying

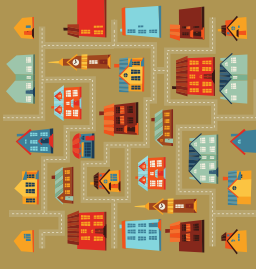


Bedroom

The Church Family

The Community

Represent Christ



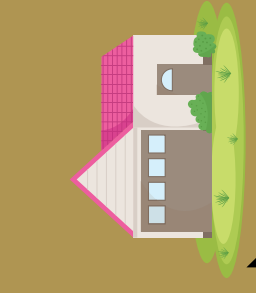
Town

Know your neighbors



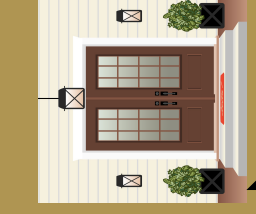
Neighborhood

Love your neighbors



Yard

Practice Hospitality



Porch

Disciple Maker Pathway

Invite into the family



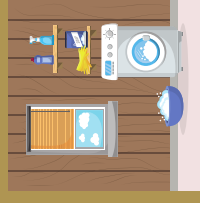
Living Room

Be family



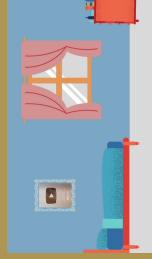
Dining Room

Serve the family



Laundry

Lead a family



Bedroom

The Church Family

"The Why" for being a Disciple Maker?

1) _____

Go therefore and make disciples of all nations,
baptizing them in the name of the Father and of the
Son and of the Holy Spirit. - Matthew 28:19

2) _____

When he went ashore he saw a great crowd, and he
had compassion on them, because they were like
sheep without a shepherd. And he began to teach
them many things. - Mark 6:34

3) _____

For if we are beside ourselves, it is for God; if we are in our right
mind, it is for you. For the love of Christ controls us, because we
have concluded this: that one has died for all, therefore all have
died; and he died for all, that those who live might no longer live
for themselves but for him who for their sake died and was raised.
2 Corinthians 5:13-15

Ascend Discipleship Pathway Explained

Sub-Heading Explained

I believe it would be helpful to explain the elements that are used throughout this document prior to diving into the unique phases of our discipleship pathway. I have chosen five different ways to discuss each phase of our discipleship pathway. These are for purpose of explanation to our church body, providing guardrails for leadership decisions, and to make sure that our pathway is accomplishing its primary goal of discipleship.

Overtime the elements within these categories might change, but the discipleship phases themselves will remain a constant in the systems of Ascend Bible Church.

Discipleship Stage:

Within each category the first descriptor provided is a common term often used by an individual to describe where they are in relation to the Gospel message. Within our pathway we use a scale from Resistant (to the Gospel), to a multiplying disciple maker.

Environments:

This describes the different ways in which we will be discipling a person within each phase. Within "environments" we are borrowing terms commonly used to describe practices of discipleship.

Process:

This category describes what we are trying to accomplish with the "environment". What is the purpose behind us engaging in this mode of discipleship as Ascend Bible Church?

Next Steps:

This section describes how we are effectively moving a person in a "environment" towards Jesus. We believe that it is crucial that we provide intentional next steps for each person in our discipleship pathway.

Measuring Success:

We believe that it is beneficial for us to constantly evaluate how effective are we at discipling people towards Christ. This section describes how we plan to measure how truly successful we are at discipleship within this category.

The Town

Discipleship Stage: Resistant

Sadly there are many in our community that have a negative view of Church. We desire to change that, and we know that to accomplish this we must do more than expect them to show up at our gatherings. We must love our town where they are in hopes to change the way they think.

Environments: Community Service

We hope to change people view of God through our service in the community. This means showing up at events that are not put on by Ascend to be helpful in whatever way is needed.

Process: Serve in Community

Throughout the year we hope to show up and help other organizations that are involved in our community.

Next Steps: Expression of Love

Our desire is that through these efforts people experience an expression of love that is motivated by our Love for Jesus Christ. In hopes that we shift their thoughts on church from negative experiences to positive.

Measure Success: \$\$\$, opportunities, request

We will know we are reaching those resistant to the gospel by these ways:

- 1) We will give a portion of our dollars to things that do not directly benefit Ascend Bible Church.
- 2) We are actively involved in events in our community throughout a calendar year.
- 3) We are being requested by outside organizations to serve at their events.



Resistent "Represent Christ"

Town

Where do you Live?

Where do you work?

Where do you play?

Do you know non christians?

Do they know you are a christian?

What does it look like for you to represent Christ in your community?

When he saw the crowds, he had compassion for them, because they were harassed and helpless, like sheep without a shepherd. - Matthew 9:36

The Neighborhood

Discipleship Stage: Neutral

Many within our community do not see church as a priority, and have a neutral feeling towards being involved in a local church. We desire to minister these people and disciple them towards a recognition of their need for a savior, and thus involvement in Ascend Bible Church.

Environments: Community Outreach

Throughout the year we will host events ourselves that will meet a need in the community.

Process: Event

We desire that people look forward to our events and that they attend them regularly.

Next Steps: Invite

Out of our events we hope to invite people to our discovery bible studies.

Measure Success: Event attendance

We will know we are reaching people neutral to the gospel in these ways:

- 1) attendance of events
- 2) new attendees at discovery bible studies.



Neutral "Know your neighbors"

Neighborhood

Do you know your neighbors (Live, Work, Play)?

What does it look like for you to care for your neighbors (Live, Work, Play)?

What are needs in the neighborhood the church could meet?

You shall love the Lord your God with all your heart and with all your soul and with all your mind. This is the great and first commandment. And a second is like it: You shall love your neighbor as yourself. On these two commandments depend all the Law and the Prophets

The Yard

Discipleship Stage: Curious

Within our community people hang around the church but never take a step into community. We hope to provide easy on ramps to disciple those who are curious about the gospel.

Environments: Discovery Bible Studies

Discovery Bible Studies is an easy method to introduce someone to the bible. We will host discovery bible studies in both the small group format, and the large group format at Ascend Bible Church .

Process: Explore

We hope to help people explore the gospel message in hopes that they meet Jesus.

Next Steps: Sunday Invite

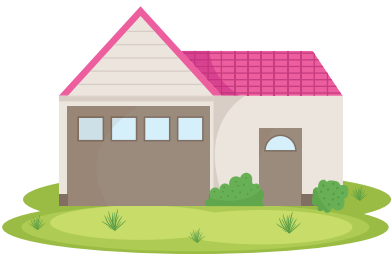
Out of discovery bible studies we hope to welcome people into our church by consistent invites.

Measure Success: people involved

We will know we are reaching people curious about God simply by attendance in our discovery bible studies.

Curious "Love your neighbors"

Yard



Who in your life is curious about Jesus?

What is preventing you from sharing the gospel with them?

How can Ascend equip you to disciple those who are curious about Jesus?

You shall love the Lord your God with all your heart and with all your soul and with all your mind. This is the great and first commandment. And a second is like it: You shall love your neighbor as yourself. On these two commandments depend all the Law and the Prophets

The Porch

Discipleship Stage: Open

There are people that are open to the gospel but no one has taken the time to disciple them. Within our pathway we hope to equip our people to disciple those who are open to the Gospel.

Environments: 1 on 1 Discipleship

We believe that this is best done in one on one discipleship. We will equip our people to disciple those open to the gospel towards Christ.

Process: Invite

We will encourage people in these conversations to invite people towards a decision to follow Jesus, and invite them into our church community whether it be Sunday morning attendance or small groups.

Next Steps: Sunday invite

Out of 1 on 1 discipleship we encourage our members to invite those they are discipling into our church family.

Measure Success: Members involved in Discipling

We will know we are reaching people open to the gospel when our people are are discipling people 1 on 1.



Open "Practice Hospitality"

The Porch

Who in your life is curious about Jesus?

What is preventing you from discipling them?

How can Ascend equip you to disciple those who are curious about Jesus?

Above all, love each other deeply, because love covers over a multitude of sins. Offer hospitality to one another without grumbling. Each of you should use whatever gift you have received to serve others, as faithful stewards of God's grace in its various forms. If anyone speaks, they should do so as one who speaks the very words of God. If anyone serves, they should do so with the strength God provides, so that in all things God may be praised through Jesus Christ. To him be the glory and the power for ever and ever.

Amen. - Peter 4:8-11

The Living Room

Discipleship Stage: Responsive

Once people have responded to the gospel and the Holy spirit has entered their heart there are many foundational biblical truths that can help them as they grow in Christlikeness. In this phase we hope to help me understand the basic building blocks for growing their faith.

Environments: Foundations Class

This is a consistent class offered within the church to help catechize new believers to the foundational teachings of the Christian Faith.

Process: Invite: Baptism, Welcome Class Attendance

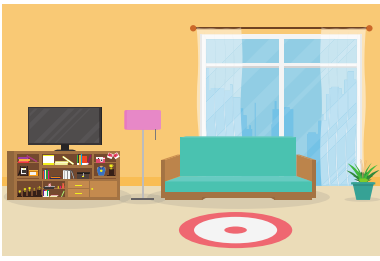
As new believers come to Christ in Ascend we hope to have the opportunity to baptize them into the faith, and our church community.

Next Steps: Welcome Class

Joining a new church can be daunting every month we will have a class offering for new believers to learn about Ascend, and the basic beliefs we hold to as a church, and what their next step may be into our church body.

Measure Success: Baptisms, Welcome Class attendance

We will know that people are responding to the gospel message within our church body by number of baptisms we perform, and number of people attending the monthly welcome class.



Responsive "Invite into the Family"

Living Room

Who do you need to invite into the church family?

What is preventing you from inviting them?

What does a welcoming church look like?

May the God who gives endurance and encouragement give you the same attitude of mind toward each other that Christ Jesus had, so that with one mind and one voice you may glorify the God and Father of our Lord Jesus Christ.

Accept one another, then, just as Christ accepted you, in order to bring praise to God. For I tell you that Christ has become a servant of the Jews on behalf of God's truth, so that the promises made to the patriarchs might be confirmed and, moreover, that the Gentiles might glorify God for his mercy.

-Romans 15:7-9

The Dining Room

Discipleship Stage: Growing

This is the stage that a bulk of the church is likely in. People need community centered on commitment to scripture and encouraging one another to grow and be formed into Christ likeness.

Environments: Large Group Environments

We offer consistent large group environments within our church to encourage people to get into the scripture in community, and we hope that out of our gatherings people will join smaller groups.

Process: Assimilate

Within this phase we are working to help people assimilate into our church body. We hope a simple easy step will encourage people to commit to growing in Christ within Ascend.

Next Steps: Encourage (Discipleship Environments)

While we believe the large group environment is effective for transmitting biblical knowledge we know it has limitations as it relates to community, and accountability. With a strong conviction that a majority of our members are in groups we hope to move people from the gathering environments to the small group environment

Measure Success: Attendance

We will know we are helping disciples grow by attendance across all environment attendance.



Growing

"Be a family"

Dining Room

What are your daily rhythms of abiding in Christ?

How do you see Ascend Helping you Grow towards Christ?

How will you commit to be a part of the Ascend Family?

And they devoted themselves to the apostles' teaching and the fellowship, to the breaking of bread and the prayers. And awe came upon every soul, and many wonders and signs were being done through the apostles. And all who believed were together and had all things in common. And they were selling their possessions and belongings and distributing the proceeds to all, as any had need. And day by day, attending the temple together and breaking bread in their homes, they received their food with glad and generous hearts, praising God and having favor with all the people. And the Lord added to their number day by day those who were being saved.

-Acts 2:42-47

The Laundry Room

Discipleship Stage: Working

We hope to be a church of maturing disciples, not simply a church that exist in community and knows biblical knowledge. Maturation includes all aspects of the spiritual life. We believe this maturation takes place within life on life discipleship and devoting ones life to the work of the ministry.

Environments: Small Groups, serve teams

Small Groups encourage community, accountability and lifelong relationships.

We also believe that every person who calls Ascend the their church should be serving in the church.

Process: Community

Within this phase we are creating environments that people within our church can exist in smaller communities in hopes to encourage life on life discipleship.

Next Steps: Leadership Training

we are constantly seeking the next group leaders, deacons, elders and leaders for other ministries within our church.

Measure Success: Small Group Attendance, serving gaps

We will know we are maturing disciples by our small group attendance within our church, and where are the serving gaps in our church.

.



Working

"Serve the Family"

Laundry Room

How can you partner with Ascend in the work of ministry? (Spiritual Gifts)

Where do you see needs in Ascend that need met? (Sacrifice)

How is God leading you to give of the "treasures" he has entrusted you with?

Now you are the body of Christ, and each one of you is a part of it. And God has placed in the church first of all apostles, second prophets, third teachers, then miracles, then gifts of healing, of helping, of guidance, and of different kinds of tongues. Are all apostles? Are all prophets? Are all teachers? Do all work miracles? Do all have gifts of healing? Do all speak in tongues? Do all interpret? Now eagerly desire the greater gifts.

-1 Corinthians 12:27-31

The Bedroom

Discipleship Stage: Multiplying

Discipleship is a lifelong process but the fruit of discipleship is multiplication. This is leading others in the faith, and thus multiplying what has been taught to you.

Environments: Ministry Leadership

Throughout our entire church there are many ministry roles that are led by our members. We hope to be a church that equips the church member to do the ministry. This means our members leading ministries.

Process: Serve

Service is the goal, moving a church member from simply being a consumer to an active participant within the church body.

Next Steps: Send out/Equip

We desire to be a sending church. Meaning that we will send people out of Ascend to help start other churches across our city and nation. We also believe that every leader in our church should be equipping the next leader for their role in hopes that they can step into a new calling if God is to place it on their heart.

Measure Success: Leadership Gaps

We will know we are creating multiplying disciples by the lack of gaps within our leadership structure as a church.



Multiplying

Lead a family

Bedroom

Have you ever considered if the Lord is calling you to leadership in the local church?

If so, what roles do you believe God is calling you to consider?

Would you desire a follow up conversation about this? send a picture of this sheet (mitch@ascendbible.church)

And I am certain that God, who began the good work within you, will continue his work until it is finally finished on the day when Christ

Jesus returns.

-Philippians 1:6