

INSIDE THE TEMPLE

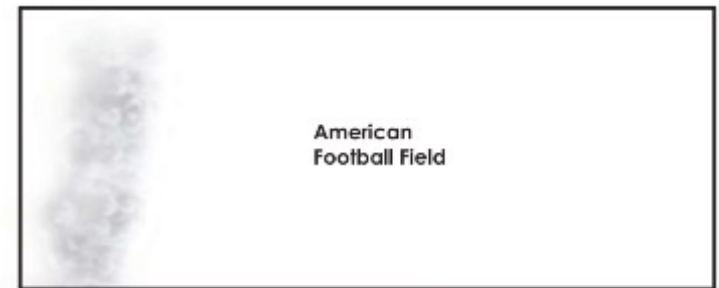
(Cutaway view)

1. Holy of Holies
2. Ark
3. Veil
4. Altar of Incense
5. Lampstand (Menorah)
6. Holy Place
7. Table of Shewbread
8. Outer Veil

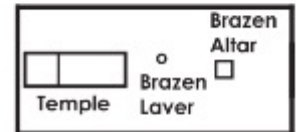
Pillar of
Smoke

The
Temple

Pillar



Size comparison
(approximate):



Court of the
Tabernacle

TEMPLE COVERINGS AND CURTAINS

9. Outer covering of badger skins
10. Covering of Ram's skin dyed red
11. Curtain of goat's hair
12. Curtain of fine linen

Curtain
enclosure

Court of the
Tabernacle

Brazen
Laver

Brazen
Altar

Slaughter
Tables

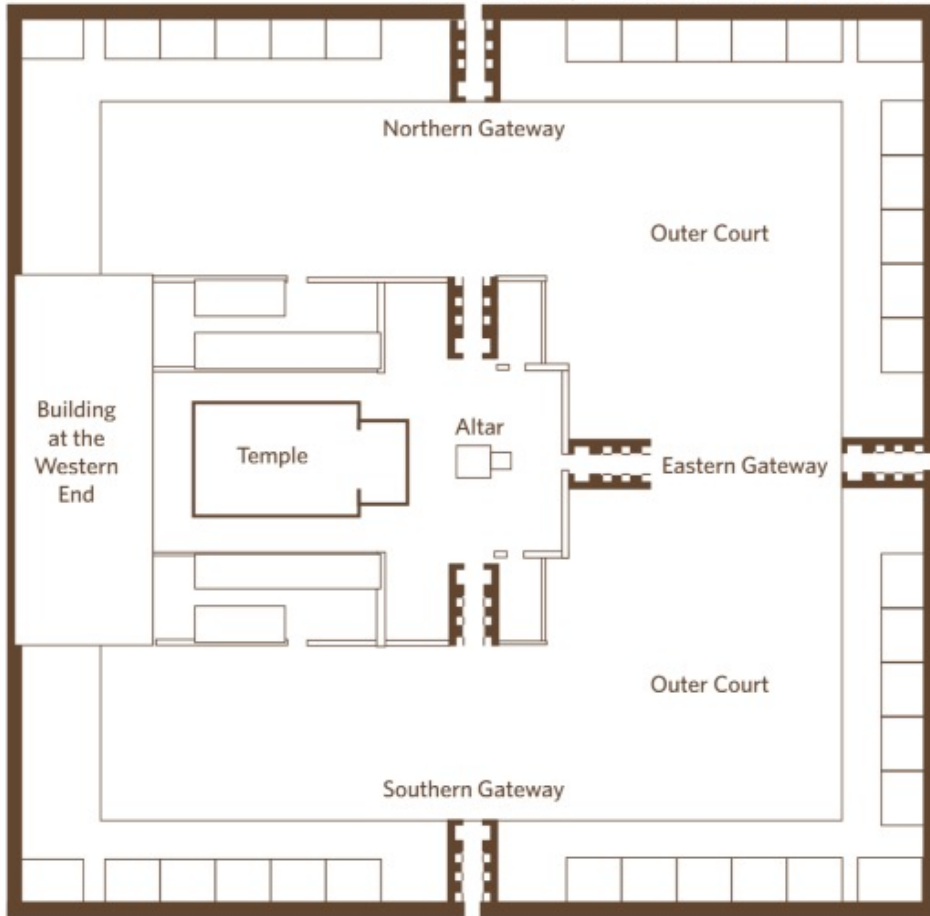
Entrance
Curtain

The Tabernacle

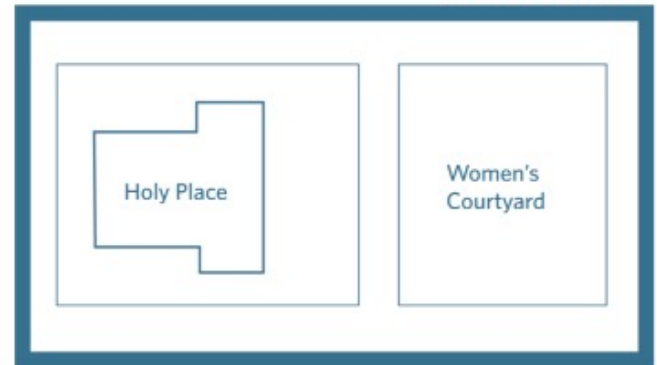
This portable temple was built in the wilderness by the Israelites circa 1450 BC after they were freed from Egyptian slavery. The Tabernacle was the first temple dedicated to God and the first resting place of the Ark of the Covenant. It served as a place of worship and sacrifices during the Israelites' 40 years in the desert while conquering the land of Canaan.

Temple Size Comparisons

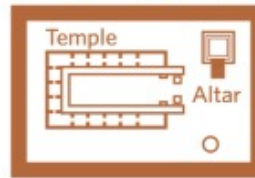
500 x 500 cubits | 750 x 750 ft **EZEKIEL'S TEMPLE**



HEROD'S TEMPLE



SOLOMON'S TEMPLE



COURT OF THE TABERNACLE



100 x 50 cubits | 150 x 75 ft

AMERICAN FOOTBALL FIELD



100 x 50 yards | 300 x 150 ft

The High Priest



The High Priest

All other Priests



The High Priest

- ❖ Stones: Inside the breastplate were twelve stones representing the twelve tribes of Israel (Exodus 28:17–21).
 - Row one: Sardius, topaz, & emerald.
 - Row two: Turquoise, sapphire, & diamond.
 - Row three: Jacinth, agate, & amethyst.
 - Fourth row: Beryl, onyx, & jasper.

