

longviewheights

BAPTIST CHURCH

MAY 5, 2024

*We Exist To Magnify God, Multiply Ourselves Faithfully And Fruitfully,
And To Make A Difference In Our Communities And Around The World... For HIS Kingdom*



VBS
2024

**CHILDREN'S & 4-FRIENDS
CREW LEADERS STILL NEEDED!**

MAY 19
VOLUNTEER TRAINING

JUNE 3-7
CHILDREN
COMPLETED K-5
(MON-FRI) 9AM-Noon
EMAIL: LClark@LHBC.ME

JUNE 9-13
4-Friends Special Needs
5 yrs-adult
(SUN-TH) 6:30-9:00PM
EMAIL: LWilson@LHBC.ME

kids
choir

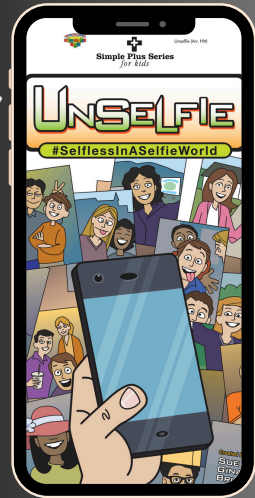
PRESENTS:

#WEDNESAY

#MAY 8

#6:30 PM

#WORSHIP CENTER




Redeemer

A Study in the Book of Ruth

Volunteers Needed

LHBC *Night*

END OF SEASON CELEBRATION



TUESDAY, **14** MAY

FIELD OF DREAMS

SNOWDEN GROVE PARK

Southaven, MS **ARRIVE BY 5:00-5:30**

PASS OUT FOOD • HELP ON THE FIELD • CHEER

HELP WILL ALSO BE NEEDED AT 3 PM IN THE LHBC KITCHEN COOKING AND WRAPPING THE HOT DOGS.

Email Lisa Wilson at lwilson@lhbc.me for more information.



IN MARRIAGE

DR. EMERSON EGGERICHS

NEW PARENTING/MARRIAGE DISCIPLESHIP GROUP

**WEDNESDAYS, MAY 1-22, 6:30-7:30PM
ROOM C-136**

WEDNESDAY MEAL

MAY 8, 4:45-6:00PM

- BREAKFAST
- BACON/SAUSAGE
- EGGS
- BISCUITS & GRAVY
- KIDS: SAME
- SERVING TEAM: B

ADULTS: \$6
KIDS 10 & UNDER: \$3

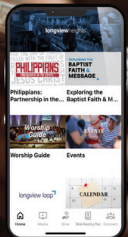
Baby Bottle Campaign

DURING THE MONTHS OF MAY AND JUNE, IN HONOR OF MOTHER'S & FATHER'S DAY, LET'S FILL UP AS MANY BABY BOTTLES AS POSSIBLE


- Fill up baby bottles with coins to support the Pregnancy Care Center in Southaven
- Bottles available near the Connect Center



HOW TO STAY connected



SCAN TO VISIT THE EVENTS PAGE ON OUR WEBSITE



THE LHBC MOBILE APP WITH REMINDERS

WORSHIP ATTENDANCE FOR 4/28/2024

WORSHIP SERVICE	719
ONLINE WORSHIP	*121
COMMUNITY GROUPS	659

ONLINE WORSHIP NUMBERS ARE APPROXIMATE.

- 5/5 • Nexts Steps, 9AM
- Graduate Recognition
- Treasured Doves, 12PM

- 5/7 • Men's Prayer Group, 6AM
- Pickleball, 6:30PM

- 5/8 • Moovin' & Groovin', 9AM
- The Crazy Cycle, 6:30PM
- Kid's Choir Musical, 6:30PM
- Broken Vessels, 6:30PM

- 5/9 • Men's Bible Fellowship, 6AM
- Pickleball, 9AM

- 5/12 • Mother's Day!
- Next Steps, 9AM

WEEK OF MAY 5 - MAY 12

**LAST WEDNESDAY
NIGHT MEAL: MAY 15**

MAY MEMORY VERSE

MATTHEW 6:33 (ESV)

"But seek first the kingdom of God and his righteousness, and all these things will be added to you."

Sunday:

9:00AM Community Groups

10:30AM Worship

5:30PM Young Adults/College/Career

Wednesday:

4:45-6:00PM Meal

6:20PM Discipleship Groups

6:30PM Adult Bible Study

Offering for 4/28/2024 (For FY '24)

Weekly Requirement	\$60,190
Budget Offering	\$44,282
Budget Required YTD	\$2,106,650
Budget Offering YTD	\$1,999,014
D&W/Bldg Fund	\$2,646
D&W/Bldg Fund YTD	\$122,401
World Missions Offering	\$1,920
World Missions YTD	\$26,127
Mortgage Balance (Updated Monthly)	\$919,290

ONLINE GIVING:

[GIVING.LONGVIEW.CHURCH](https://giving.longview.church)

OR SCAN THE QR CODE

MAIL: 4501 GOODMAN RD
OLIVE BRANCH, MS 38654





CHURCH OFFICE HOURS/INFO:

Monday - Thursday : 8:00am - 5:00pm

662-895-1900

www.LongviewHeights.org

4501 Goodman Road, Olive Branch, MS 38654