



LIFE TRAIL

— WORKBOOK —

discover the trail that leads to life



Hey Trailblazer,

I am so glad you have chosen to take the Life Trail journey with us! I really believe you will be blessed as you step out on this adventure, seeking God's purpose, direction and path for your life.

At Mountain Life, you are more than just an attendee or even a member, you are a vital part of our family. Life Trail is a valuable tool that will help you find out how God wants to knit you into this family and what it looks like to be a part of this House!

With love in Jesus,

Pastor Nate Morris

*"Trust in the Lord with all your heart;
do not depend on your own understanding.
Seek his will in all you do,
and he will show you which path to take ."*

- Proverbs 3:5-6

NAME:

DATE:

YOU WERE BORN ON PURPOSE
F O R A P U R P O S E

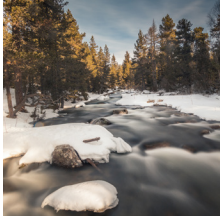

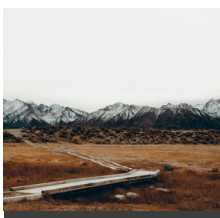
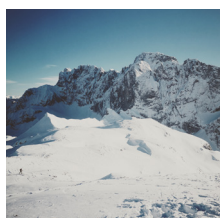
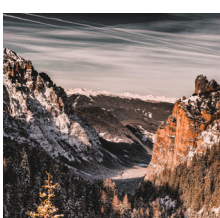
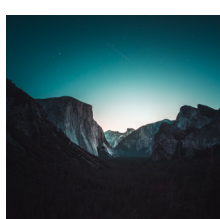
**All scripture referenced in Life Trail is NLT unless otherwise annotated.*

TABLE OF CONTENTS

	INTRODUCTION In pursuit of Jesus.	6-7
	STEP ONE: LEARN Learn the story of Mountain Life, where we've been and where we're going.	8-31
	STEP TWO: INVESTIGATE Discover your spiritual gifts and reveal your purpose in ministry.	32-57
	STEP THREE: FIND Discover and develop the essential habits of following and leading like Jesus.	58-71
	STEP FOUR: ENGAGE Connect with opportunities at Mountain Life to use your God-given gifts.	72-83
	ADDENDUM What we believe.	84-87



SHORTCUTS

	CULTURE	18-19
	MOUNTAIN LIFE GROUPS	24-47
	SPIRITUAL GIFTS	40-42
	FIVE VOICES	48-53
	SMART GOALS	66-67
	TRAIL CREW TEAMS	78-79

IN PURSUIT

When you make the decision to follow Jesus, you begin a journey of pursuing God. This pursuit plays out in four areas: with one another, through worship, by the Word and to the world. Life Trail covers the fourth area of this journey: discovering how God designed you and how you fit into His purpose through the local church to the world. Once you find that fit, you're ready to live the life God created for you. Find the great fulfillment that's available to all of us as we create opportunities for life change through Jesus.

L

LEARN the story of Mountain Life, where we've been and where we're going. Find out why God has us in mountain communities and the vision God has given us to love and serve people, both locally and globally.

I

INVESTIGATE: Dive into the details of your personality, discover your spiritual gifts, and see how your design reveals your purpose in life and your best fit in ministry.

F

FIND: Discover and develop the essential habits of being a follower of Jesus and how to unleash your potential to lead like Jesus.

E

ENGAGE: Connect with the opportunities at Mountain Life that give you the ability to use your God-given gifts to live out your purpose, loving and serving others.

LEARN.



01

MISSION & VISION

LIFE TRAIL

The Mission of Mountain Life

IS TO

INTO

WITH

The Vision of Mountain Life

IS TO

THROUGH THE

AND THE

OF THE

MISSION



WHAT IS CULTURE?

Culture is a common language and belief - it's how people act and interact; it's a way of life. Culture is the way we do things and it's created whether we intend to or not. For culture to be cultivated and fostered, it must be codified. It has to become part of the spoken language.

“

Everything we do is about people experiencing life change through relationship with Jesus. That is our purpose.

-
Pastor Nate

L I F E T R A I L

OUR CULTURE

Jesus said that all of the things God would have us do fall under two commands He gave us, to Love God, and to Love Others. These are the two greatest commandments (*Matt. 22:36-40*). We take Jesus' words seriously, so our culture at Mountain Life is built on these core practices; loving God, and loving others.

LOVE

GOD

LOVE

OTHERS



Love God.

WE KEEP JESUS AT THE CENTER

We are not a social club. We gather in the name of Jesus Christ for the purpose of honoring His will and purpose in our community.

WE TAKE HIS WORD FOR IT

We are dedicated and committed to receiving and spreading good teaching from God's word. We want people to understand the depth and personal application of Scripture.

WE LISTEN TO THE HOLY SPIRIT

We believe that God's Spirit is still leading and guiding us in today's world. Our desire is to have spiritual ears to hear what the Spirit is speaking to us today.

WE GET OUR HANDS ON THE NET

While we understand that God is the one who brings in the fish, we also understand our need to get our hands on the net, to pull in the catch. We are not afraid to get our hands dirty as we fulfill the purposes of God.

WE GO FULL SEND

We set high goals and then trust in an unstoppable God. We put it all on the line trusting that God is working behind the scenes. We don't want to be safe; we want to take risks.

WE LEAVE ROOM FOR CREATIVITY

We do not believe we have it all together, or that the way we do things is the only way. We are always looking for new ways to grow and we support creative thinking.

Love Others.

WE REACH & DISCIPLE AS MANY AND AS QUICKLY

Our desire is to reach people with the Love of Jesus...as many people as possible...as quickly as possible. We desire to help people grow in their knowledge of and love for the Lord.

WE PUT WE ABOVE ME

We commit to considering others more than ourselves. We support the idea of pursuing the best for everyone, rather than ourselves.

WE'RE FOR ANYONE, NOT EVERYONE

Our church is for anyone who will come, but we realize that not everyone likes the way we do things—and that's okay. God has called us to please Him, not people. While everyone is important to us, we are more concerned with glorifying the Lord and reaching the lost than pacifying critics.

WE SHARE OUR TIME, TALENTS AND TREASURE

We don't believe anything is solely ours. Our desire is to share all... our time, our talents, and our treasures.

WE LIVE OUT HONOR; UP, DOWN AND AROUND

We believe Jesus lived a life of honor: honoring the Father, honoring others, and receiving honor Himself. We operate the same way: Honor Up (the Lord and leadership above us), Honor Down (those who serve underneath us), Honor All-Around (those we serve with, guests, and those we interact with).

WE SHARE THE SAME MESSAGE, USING NEW METHODS

We believe that God rarely moves in exactly the same way; likewise, the leadership and vision that God provides doesn't always come in the same forms. We embrace change and don't use the past as a crutch for the future. The message will not change, but the methods must.

LEADERSHIP

As you consider investing your heart, time, family, and finances into the life of the church, it is important for you to be confident in church leadership. Our goal in sharing an overview of Mountain Life government is that you will understand that our church is structured to support the values of integrity, accountability, and spiritual authority.

- We are led by a _____.**
We operate under a localized episcopal form of government. We are a lead pastor-led church that is advised and supported by our pastoral leadership team.
- We are guided by a _____.**
Our team of assistant pastors oversees the day-to-day ministry and operations of the church. These pastors serve the church and are responsible for the development of the spiritual life of the church.
- Our ministry is supported by _____.**
Our central staff includes finance, communications, outreach and administration.
- We are governed by _____.**
Our board of directors oversees all the business operations and affairs of Mountain Life.
- We are funded by _____.**
Our operations are supported by the generosity of the Mountain Life community.

GIVING

Giving is one of the most common themes in the Bible. Jesus taught more on this subject than on heaven and hell combined. To understand what it means to be a Christ-follower, we must also understand what it means to be a generous giver.

WHAT ARE TITHES?

The word "TITHE" literally means "10%". The tithe, or first fruits, of our labor and income belong to God. We find this principle all through God's Word. Tithing, giving God the first ten percent of our income to the local church, is the primary, practical way we acknowledge that God is first (Proverbs 3:9-10).

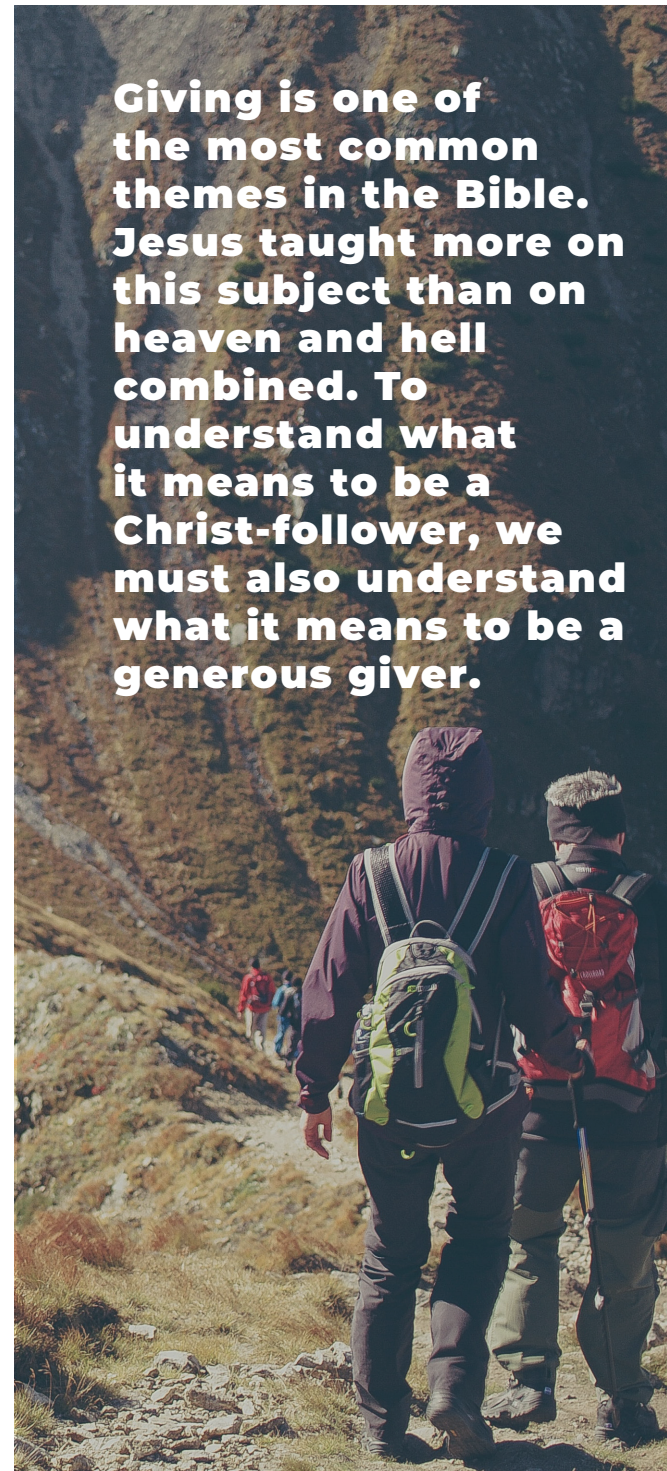
WHAT ARE OFFERINGS?

An offering is giving over and above the tithe. The Bible says that by giving generously, we are able to "take hold of what is truly life" (1 Timothy 6:17-19).

WHAT IS THE GIFT OF GIVING?

The gift of giving is a spiritual gift that God gives to some people (Romans 12:8). It is a Spirit-given capacity and desire to serve God by giving of your material resources far beyond the tithe to further the work of God.

The giving of tithes and offerings is worship to Jesus and an expression of the relationship between the individual giver and the Lord. Giving is more than just income; it is an act of worship—not a business transaction but an expression of gratitude to God.



FINANCES

STEWARDSHIP

Stewardship of generosity is critical to maximize the impact for God’s Kingdom. We practice stewardship by applying checks and balances at multiple levels throughout the budgeting process. Budgets are generated on an annual basis and are reviewed by the Business Office and the Executive Office, with final approval granted by our Board of Directors. Iterations of budgets, trimming, and budget adjustments are analyzed at each level to provide a high level of accountability.



Remember this—a farmer who plants only a few seeds will get a small crop. But the one who plants generously will get a generous crop. You must each decide in your heart how much to give. And don’t give reluctantly or in response to pressure. “For God loves a person who gives cheerfully.”

2 Corinthians 9:6-7

ACCOUNTABILITY

An independent third-party audit is completed regularly to review financial and accounting practices.

Here’s a general breakdown of finances at Mountain Life.



Missions & Benevolence



Savings & Growth



Ministry & Operations



Administration

NOTES

LIFE TRAIL

MOUNTAIN LIFE GROUPS

LIFE IS BETTER TOGETHER



"So continuing daily with one accord in the temple, and breaking bread from house to house, they ate their food with gladness and simplicity of heart, praising God and having favor with all the people. And the Lord added to the church daily those who were being saved."

ACTS 2:46-47
(NKJV)

**WE DESIRE
TO BE A
CHURCH OF
GROUPS,
NOT A
CHURCH
WITH
GROUPS.**



OUR MODEL

We base our group model on the early church as described in the book of Acts. In reading Acts, you can discover how small groups helped lay the foundation for explosive growth in the first church.

WHAT ARE ML GROUPS?

ML Groups are small groups. They can meet around a dinner table or coffee table. They gather regularly around a sport or a common interest.

ML Groups are a place to grow in your relationship with Jesus and people. You can share what's going on in your life, discuss the weekend message, encourage each other, pray and help each other take steps forward.

JOIN A GROUP

ML Groups are diverse and vary in stage of life, interest, location and more. Search for groups in our online groups directory. Once you find a few groups that interest you, complete the online form to contact the leaders to learn more. Then, make plans to check them out in person.

LEAD A GROUP

Leading a group doesn't mean teaching a group. When you lead a group, you love a group. Leading a group looks like facilitating a discussion, helping people take their next steps and meet their goals, planning activities and checking in on your group throughout the week. If you are interested in leading a group, contact your Life Trail leader.

MOUNTAIN LIFE GROUPS



ACTIVITY GROUPS

These groups center around a variety of activities; mountain biking, skiing, hiking, etc.



LIFE SITUATION GROUPS

These groups are broken into a variety of life situations; young families, single moms, addiction recovery, etc.



TEACHING DISCUSSION GROUPS

These groups meet to go deeper with a discussion on Sunday's Bible teaching.



YOUTH GROUPS

These groups are centered around ages; middle school, high school, young adults.



GENDER SPECIFIC GROUPS

These groups are broken up based on gender; men's and women's.



“
**Iron sharpens iron,
and one man sharpens
another.**

PROVERBS 27:17



“

THE HUMAN BODY HAS MANY PARTS, BUT THE MANY PARTS MAKE UP ONE WHOLE BODY. SO IT IS WITH THE BODY OF CHRIST. ALL OF YOU TOGETHER ARE CHRIST'S BODY, AND EACH OF YOU IS A PART OF IT.

1 Corinthians 12:12, 27

NEXT STEPS

THE ESSENTIALS



Make the decision.

If you've not yet made the decision to follow Jesus, tell your host at Life Trail. We want to spend a few minutes with you explaining what it means to follow Jesus, pray with you and give you a Bible.



Join a Mountain Life Group.

You weren't meant to live life alone, much less follow Jesus alone. Mountain Life Groups are our small groups. They are a place to grow in your relationship with Jesus and people.



Get baptized.

If you've made the decision to follow Jesus, take the next step and go public with your faith. Ask your campus pastor about the next opportunity to get baptized.



Give generously.

Consider regular giving to Mountain Life to expand our mission in saving a lost world. You can set up recurring giving online or on the Mountain Life app.

02

INVESTIGATE.

"I tell you the truth, anyone who believes in me will do the same works I have done, and even greater works, because I am going to be with the Father."

JOHN 14:12



**STEP 2:
INVESTIGATE**

**DISCOVER
YOUR
SPIRITUAL
GIFTS**



3

“As each one has received a gift, minister it to one another, as good stewards of the manifold grace of God. If anyone speaks, let him speak as the oracles of God. If anyone ministers, let him do it as with the ability which God supplies, that in all things God may be glorified through Jesus Christ, to whom belong the glory and the dominion forever and ever. Amen.”

1 PETER 4:10-11 (NKJV)

**WE _____
WITH THE ABILITY _____.**

1

“Having then gifts differing according to the grace that is given to us, let us use them.” ROMANS 12:6A

**MY _____
REVEALS
MY _____**



**IF I'M A _____,
I'M A _____.**

2

So Jesus called them together and said, “You know that the rulers in this world lord it over their people, and officials flaunt their authority over those under them. But among you it will be different. Whoever wants to be a leader among you must be your servant, and whoever wants to be first among you must be the slave of everyone else. For even the Son of Man came not to be served but to serve others and to give his life as a ransom for many.”

MARK 10:42-45



4

““And now I will send the Holy Spirit, just as my Father promised. But stay here in the city until the Holy Spirit comes and fills you with power from heaven.” LUKE 24:49

**OUR POWER TO

COMES FROM THE
_____.**

SPIRITUAL GIFTS PROFILE

Step 1: Read the spiritual gifts statements below.

Step 2: Write the number that indicates how each statement describes you in the blanks on the following page.

- | | | | |
|---|---|---|---|
| 1 I enjoy working out the details needed to organize people and resources. | 17 I enjoy sharing the gospel with other people, groups, and nationalities. | 33 I believe miraculous healing is possible and still happens. | 53 Sharing the gospel with someone I do not know is exciting and natural for me. |
| 2 I am interested in starting new churches. | 18 I've devoted considerable time to mastering my voice and/or musical instrument. | 34 Helping others is one of my greatest motivations. | 54 I look for ways to encourage other people. |
| 3 I enjoy working with my hands. | 19 Caring for the hurting is one of my highest priorities. | 35 Creating a warm and welcoming environment is important to me. | 55 I trust that God has my back in every situation. |
| 4 I can tell when someone is insincere. | 20 I get frustrated when people knowingly sin. | 36 I am burdened to pray for situations affecting the world. | 56 Making more money means that I can give more. |
| 5 I pray daily for people who don't know Jesus. | 21 I enjoy serving behind the scenes. | 37 I've suddenly known things that are needed by a person or group, though I don't know how I came to know these things. | 57 God has used me to bring healing to those who are sick. |
| 6 Encouraging others is a high priority in my life. | 22 I like creating outlines of the Bible. | 38 People seem to look to me for leadership when I am in a group. | 58 Being a part of the process is fulfilling to me. |
| 7 I believe God accomplishes the impossible and have seen it in a tangible way. | 23 God has used me to interpret what someone speaking in tongues is saying. | 39 I'm very sensitive to sad stories. | 59 I tend to make total strangers feel at home. |
| 8 I am passionate about financially investing in the kingdom of God. | 24 I enjoy the book of Proverbs more than any other book in the Bible. | 40 After I pray for people, God has brought about supernatural changes in their lives or circumstances. | 60 People often ask me to pray for them. |
| 9 I look for opportunities to pray for the sick. | 25 I am passionate about managing details. | 41 The idea of living in another country to benefit the gospel is exciting to me. | 61 On occasion, God has revealed to me people's situations and problems. |
| 10 I enjoy doing little things that others typically do not enjoy. | 26 I like to help start new ministry projects. | 42 I desire to serve the church through worship. | 62 I delegate responsibilities to accomplish tasks. |
| 11 I often have people over to my house. | 27 I consider myself a craftsman or craftswoman. | 43 I enjoy connecting, caring for, and coaching others. | 63 I am motivated to help people in need. |
| 12 Spending hours in prayer for other people is enjoyable to me. | 28 I sense when situations are spiritually unhealthy. | 44 Confronting someone about a sin in their life is important to me. | 64 Impossible situations change when I pray for the Lord's intervention. |
| 13 I get insights about others while praying for them even though I don't know them. | 29 I am greatly motivated by seeing people who don't know God be saved. | 45 It bothers me when people sit around and do nothing. | 65 I focus a lot on reaching the world for Christ. |
| 14 I tend to motivate others to get involved. | 30 I come across as loving and caring. | 46 I share biblical truth with others to help them grow. | 66 I gain my deepest satisfaction through leading others in vocal or instrumental worship. |
| 15 I hurt when I see others hurting. | 31 Asking God for a list of seemingly impossible things is exciting to me. | 47 I pray in tongues daily. | 67 I enjoy walking with people through times of difficulty. |
| 16 I believe God works through me to perform powerful acts. | 32 I find ways to give offerings above my tithe. | 48 When I study Scripture, God gives me unique insights. | 68 I enjoy hearing passionate and clear preaching of God's Word. |
| | | 49 Creating a task list is easy and enjoyable for me. | 69 I like to do small things that others overlook. |
| | | 50 I am attracted to ministries that start new churches. | 70 I enjoy knowing biblical details and helping others to understand them. |
| | | 51 Building something with my hands is very rewarding to me. | 71 Praying in the Spirit is encouraging and important to me. |
| | | 52 I can pinpoint issues or problems quickly. | 72 When faced with difficulty, I tend to make wise decisions and choices. |

SPIRITUAL GIFTS ASSESSMENT

0 = NEVER 1 = SELDOM 2 = SOMETIMES 3 = ALMOST ALWAYS

SCORE					TOTAL	SPIRITUAL GIFT	SCORE					TOTAL	SPIRITUAL GIFT
1		25		49		ADMINISTRATION	13		37		61		KNOWLEDGE
2		26		50		APOSTLESHIP	14		38		62		LEADERSHIP
3		27		51		CRAFTSMANSHIP	15		39		63		MERCY
4		28		52		DISCERNMENT OF SPIRITS	16		40		64		MIRACLES
5		29		53		EVANGELISM	17		41		65		MISSIONARY
6		30		54		EXHORTATION	18		42		66		MUSIC/WORSHIP
7		31		55		FAITH	19		43		67		PASTOR/SHEPHERD
8		32		56		GIVING	20		44		68		PROPHECY
9		33		57		HEALING	21		45		69		SERVICE
10		34		58		HELPS	22		46		70		TEACHING
11		35		59		HOSPITALITY	23		47		71		INTERPRETATION
12		36		60		INTERCESSION	24		48		72		WISDOM

SPIRITUAL GIFTS

ON THE FOLLOWING PAGES, YOU'LL LEARN ABOUT YOUR SPIRITUAL GIFTS AND FIND OUT MORE ABOUT WHERE YOU CAN BEST USE YOUR GIFTS TO SERVE AT MOUNTAIN LIFE.

ADMINISTRATION

The divine strength or ability to organize multiple tasks and groups of people to accomplish these tasks.

Luke 14:28-30; Acts 6:1-7; 1 Corinthians 12:28

(ML Kids, Missions, Office Support, Student Ministries, All Teams)

APOSTLESHIP

The divine strength or ability to pioneer new churches and ministries through planting, overseeing, and training.

Acts 15:22-35; 1 Corinthians 12:28; 2 Corinthians 12:12; Galatians 2:7-10; Ephesians 4:11-14

(Missions, ML Group Leaders, Life Trail)

CRAFTSMANSHIP

The divine strength or ability to plan, build, and work with your hands in construction environments to accomplish multiple ministry applications.

Exodus 30:22; 31:3-11; 2 Chronicles 34:9-13; Acts 18:2-3

(ML Kids, Sunday Support, Special Event Support, Missions)

DISCERNMENT OF SPIRITS

The divine strength or ability to spiritually identify falsehood and determine whether a certain action has its source in God, man, or Satan.

Matthew 16:21-23; Acts 5:1-11; 16:16-18; 1 Corinthians 12:10; 1 John 4:1-6

(ML Kids, ML Group Leader, Decision Team, Life Trail, Prayer Team, Safety Team, Student Ministries)

EVANGELISM

The divine strength or ability to help non-Christians take the necessary steps to becoming born-again Christians.

Acts 8:5-6; 8:26-40; 14:21; 21:8; Ephesians 4:11-14

(Missions, Decision Team, ML Group Leader, Student Ministries, Creative Team)

EXHORTATION

The divine strength or ability to strengthen, comfort, or urge others to action through the written or spoken word and biblical truth.

Acts 15:22-35; 1 Corinthians 12:28; 2 Corinthians 12:12; Galatians 2:7-10; Ephesians 4:11-14

(ML Kids, ML Group Leader, Decision Team, Life Trail, Women's, Men's and Student Ministries, Welcome Team)

FAITH

The divine strength or supernatural ability to trust God with extraordinary confidence, knowing that He will work out His purpose in every situation.

Acts 11:22-24; Romans 4:18-21; 1 Corinthians 12:9; Hebrews 11

(Missions, Room Host, Section Host, Prayer Team, All Teams)

GIVING

The divine strength or ability to produce wealth and to give by tithes and offerings for the purpose of advancing the kingdom of God on earth.

Mark 12:41-44; Romans 12:8; 2 Corinthians 8:1-7; 9:2-7

(Missions)

HEALING

The divine strength or ability to act as an intermediary in faith, prayer, and by the laying-on of hands for the healing of physical and mental illness.

Acts 3:1-10; 9:32-35; 28:7-10; 1 Corinthians 12:9, 28

(Prayer Team)

HELPS

The divine strength or ability to work in a supportive role for the accomplishment of tasks in Christian ministry with the ability to often see the need before others do.

Mark 15:40-41; Acts 9:36; Romans 16:1-2; 1 Corinthians 12:28

(Missions, Event Support, Sunday Support, Parking Team, Video Team, Production Team, Creative Team)

HOSPITALITY

The divine strength or ability to create warm, welcoming environments for others in places such as your home, office, or church.

Acts 16:14-15; Romans 12:13; 16:23; Hebrews 13:1-2; 1 Peter 4:9

(ML Kids, Event Support, Host Team, Life Trail Team, ML Group Leader, Decision Team, Women's, Men's and Student Ministries, Welcome Team)

INTERCESSION

The divine strength or ability to stand in the gap in prayer for someone, something, or someplace believing in profound results.

Hebrews 7:25; Colossians 1:9-12; 4:12-13; James 5:14-16

(ML Group Leader, Decision/Prayer Team)

KNOWLEDGE

The divine strength or ability to understand and to bring clarity to situations and circumstances often accompanied by a word from God.

Acts 5:1-11; 1 Corinthians 12:8; Colossians 2:2-3

(ML Group Leader, Decision Team, Host Team, Life Trail, Prayer Team, Women's Ministry, Men's Ministry)

LEADERSHIP

The divine strength or ability to influence people at their level while directing and focusing them on the big picture, vision, or idea.

Romans 12:8; 1 Timothy 3:1-13; 5:17; Hebrews 13:17

(ML Group Leader, Creative Team, All Teams)

MERCY

The divine strength or ability to show great empathy and compassion for those who suffer in any way and to assist them.

Matthew 9:35-36; Mark 9:41; Romans 12:8; 1 Thessalonians 5:14

(Missions)

MIRACLES

The divine strength or ability to alter the course of natural law in such a way that divine intervention is the only possible explanation.

Acts 9:36-42; 19:11-12; 20:7-12; Romans 15:18-19; 1 Corinthians 12:10, 28

(Missions, Prayer Team)

SPIRITUAL GIFTS

MISSIONARY

The divine strength or ability to reach others outside of your culture and nationality while in most cases living in that culture or nation.

Acts 8:4; 13:2-3; 22:21; Romans 10:15

(Missions, ML Group Leader)

MUSIC/WORSHIP

The divine strength or ability to sing, dance, or play an instrument primarily for the purpose of helping others worship God.

Deuteronomy 31:22; 1 Samuel 16:16; 1 Chronicles 16:41-42; 2 Chronicles 5:12-13; 34:12; Psalm 150

(Worship, ML Kids, Women's, Men's and Student Ministries)

PASTOR/SHEPHERD

The divine strength or ability to care for, feed, and protect the long-term spiritual needs of individuals or groups in the body of Christ.

John 10:1-18; Ephesians 4:11-14; 1 Timothy 3:1-7; 1 Peter 5:1-3

(ML Kids, ML Group Leader, Life Trail, Women's, Men's and Student Ministries)

PROPHET

The divine strength or ability to boldly speak and bring clarity to scriptural and doctrinal truth in a way that calls people to a right relationship with God.

Acts 2:37-40; 7:51-53; 26:24-29; 1 Corinthians 14:1-4; 1 Thessalonians 1:5

(ML Group Leader, Life Trail, Prayer Team, Women's, Men's and Student Ministries)

SERVICE

The divine strength or ability to do small or great tasks in working for the overall good of the body of Christ.

Acts 6:1-7; Romans 12:7; Galatians 6:10; 1 Timothy 1:16-18; Titus 3:14

(Missions, Event Support, Life Trail, Production Team, Office Support, Sunday Support, Creative Team)

TEACHING

The divine strength or ability to study and learn from the Scriptures primarily to bring understanding and growth to other Christians.

Acts 18:24-28; 20:20-21; 1 Corinthians 12:28; Ephesians 4:11-14

(ML Kids, ML Group Leader, Life Trail, Men's, Women's and Student Ministries)

TONGUES/INTERPRETATION

The divine strength or ability to pray in a heavenly language to encourage your spirit and to commune with God. The gift of tongues is often accompanied by interpretation and should be used appropriately.

Acts 2:1-13; 1 Corinthians 12:10; 14:1-14

(Prayer Team)

WISDOM

The divine strength or ability to apply the truths of Scripture in a practical way, producing a fruitful outcome and the character of Jesus Christ.

Acts 6:3, 10; 1 Corinthians 2:6-13; 12:8

(Worship, ML Group Leader, Prayer Team, Student Ministries)

FIND YOUR TEAM

Write out your highest-ranking three or four spiritual gifts on the top of each column below. Below each gift, list the teams that accompany that gift found below each description. Circle the teams that appear to be common on two or more columns. The teams you circled are probably the ones in which you can make the most impact using your gifts.

MY GIFTS

--	--	--	--

MY TEAM

•	•	•	•
•	•	•	•
•	•	•	•
•	•	•	•
•	•	•	•
•	•	•	•
•	•	•	•
•	•	•	•
•	•	•	•
•	•	•	•

FIVE VOICES

EVERYONE SPEAKS.

NOT EVERYONE LISTENS.



FIND YOUR VOICE

God has created every person with a unique and individual personality. Much like a snowflake, no two people are exactly alike. While that is true, it is also true that many people share similar traits within their individual personality.

The purpose of 5 VOICES is to help us understand some of our personality traits so we can better understand ourselves, and others. What is unique to 5 VOICES is that personalities are grouped based primarily on how we speak. Communication is key in ministry. When we better understand what our voice is, and the challenges that our voice might create, we become better communicators, and thus, performing more effective ministry.

Likewise, when we understand what other people's voices are, we are better able to understand their form of communication, which also helps us to better do ministry together.

UNDERSTAND THIS, MY DEAR
BROTHERS AND SISTERS: YOU MUST ALL
BE QUICK TO LISTEN, SLOW TO SPEAK,
AND SLOW TO GET ANGRY.

JAMES 1:19

VOICE 1: NURTURER

YOU ARE A CHAMPION OF PEOPLE!

VOICE VOLUME = 1 out of 5

You are concerned about the relational health and harmony of the group. You are completely committed to protecting values and principles. You may have a hard time separating your work from who you are. You innately understand how certain actions, behaviors, or initiatives will affect people.

Nurturers tend to have quieter voices and can be drowned out and bullied by other louder voices. You find it difficult to assert your own needs in a combative team environment. As such, you may question your value when you don't feel heard.

In a world often lacking in encouragement, compassion and care, your voice is desperately needed.

CHAMPION OF:

- People
- Relational Harmony
- Values

WATCH OUT FOR:

Nurturers have a fear of conflict and often won't speak out. Beware of silence.

EMPOWER BY:

Let them speak first, affirm their competence and the genuine value of their contribution.

INSIGHTS:

Circle 3 insights below that you want to remember and work on.

- People see you as highly skilled. It's time you started to believe that!
- People chose you to lead because they believe in you. Act knowing that you belong!
- Learn to challenge views of other voices in your team if you believe they are wrong!
- Embrace change and help lead it. Don't be passive and function as a victim of it.
- People trust your judgment and genuinely want to hear your opinion. Use that as a springboard for influence, and speak the truth in love.
- When people challenge your views and opinions they are trying to help. It's not a personal attack!
- Pioneers are not as insensitive and arrogant as you think. They just see the world differently to you!

43%
of the population

VOICE 2: CREATIVE

YOU ARE A CHAMPION OF INNOVATION!

You are an outside the box thinker and conceptual architect. You love scanning the horizon and you are often drawn to new trends in ideas and technology. You are an "early warning radar system" that sees the opportunities and dangers of the future before everyone else. You are never satisfied with the status quo - you always believe it can be better. The word "can't" is not in your vocabulary.

You are an internal idealist and often hold yourself to impossibly high standards. You can find it difficult to clearly communicate the future ideas, possibilities, & dangers that you see so clearly. You struggle to bring appropriate challenge fearing relational disharmony. You quickly get bored with the present and with repetitive routine.

When you learn how to communicate clearly as you continue dreaming big, you can change the world.

VOICE VOLUME = 2 out of 5

CHAMPION OF:

- Future Ideas
- Innovation
- Organizational Integrity

UNIQUE AS:

9%

of the population

WATCH OUT FOR:

Creatives can struggle to communicate effectively and have idealist perfectionist tendencies.

EMPOWER BY:

Don't judge on what they say first, help them communicate their ideas. Let them know it's ok to be wrong.

INSIGHTS (circle 3)

- Learn to celebrate the wins even if it wasn't quite as perfect as you hoped.
- When members of your team critique your vision and ask for the details they are genuinely trying to help.
- Don't play safe, give yourself permission to think outside the box.
- It's ok to be wrong sometimes, it comes with the territory of creativity and imagination.
- What you see as an imminent opportunity or threat may actually be further away than you think.
- People are not deliberately ignoring your ideas, it's hard to truly hear a Creative.
- You don't have to prove your worth to teammates, relax and trust your unique contribution.



LIFE TRAIL

GUARDIAN

VOICE VOLUME = 3 out of 5

CHAMPION OF:

- Due Dilligence
- Resources
- Efficient Processes

WATCH OUT FOR:

Guardians are risk averse, can be negative, and bring excessive critique.

EMPOWER BY:

Welcome their challenging critique and commitment to due diligence.

INSIGHTS

Circle 3 insights below that you want to remember and work on.

- How you communicate is important (volume & tone); it's possible for you to be right and wrong at the same time.
- Learn to value the future orientated voices, they drive innovation and progress.
- Sometimes goal posts move on projects and it's not anyone's fault.
- Learning to compromise is a healthy part of team life.
- Be careful, constantly driving yourself and your team will eventually lead to burnout and resentment.
- Take time to invest in your key relationships today, you are not defined by task achievement alone.
- Your team knows you are competent, do they know you care?

30%
of the population

VOICE 3: GUARDIAN

YOU ARE A CHAMPION OF RESPONSIBILITY & STEWARDSHIP

You respect and value logic, order, procedure, and process. You seek clarity as well as logical and proven decision- making criteria even if you have to ask the tough questions to get there. You like to see established track records of success to justify trying something different. You may feel frustrated that you are sometimes seen as "raining on the parade" just because you are trying to make sure the team makes the best decision possible.

You ask detailed, often awkward questions that bring clarity to the tasks and challenges of organizations. You love to bring order, structure and efficiency to the world around you. You are like a cruise missile. You would rather die than fail to deliver on agreed objectives! You are incredibly conscientious and fiercely loyal to your leaders and team.

You may have strong perfectionist tendencies and thus delegation can be a challenge. You find your primary identity in work and task achievement, and you often wear people out by being always "on"! You struggle to value people who do not contribute to the task or project. Learn how to value rest and recreation, simply being with others.

When you learn how to value relationships as much as tasks, you can accomplish any achievement you set your mind to.



VOICE 4: CONNECTOR

YOU ARE A CHAMPION OF RELATIONSHIPS & STRATEGIC PARTNERSHIPS!

You are brilliant at rallying people to causes and things you believe in. You believe in a world where everyone can play and get excited about future opportunities -and you want to make it happen. Receiving appreciation and credit for making key connections is highly motivating and energizing for you. You often respond to challenges with: "Whatever we need, I can get it or I have a source."

You may find it difficult to discipline your talent and remain committed once the initial excitement has worn off. You might struggle to stay consistent and disciplined in your external communication. In your enthusiasm and passion you will often over promise and under deliver. All critique feels personal and you may be easily discouraged.

With the right amount of discipline, you will undoubtedly change the lives of many people.

VOICE VOLUME = 4 out of 5

CHAMPION OF:

- Collaboration
- Effective Communication
- Relational Networks

UNIQUE AS:

11%

of the population

WATCH OUT FOR:

Connectors always interpret challenge of their ideas as personal.

EMPOWER BY:

Give them time to share their ideas and passions, appreciate before you critique

INSIGHTS (circle 3)

- When people reject your idea it's not as personal as it sometimes feels.
- Hinting at your frustrations with team mates does not guarantee anyone has truly heard you.
- People will critique your ideas, try and avoid becoming overly defensive too soon.
- It's ok to be you - when you believe something passionately never be afraid to share it.
- Encourage the team to critique your ideas, remember the team will make them better.
- Be Intentional - take time to think through how you can create a culture where other voices can bring their best.
- Be patient with those whose due diligence process is rigorous, painful and time consuming.

VOICE 5: PIONEER

YOU ARE A CHAMPION OF RESULTS AND PROGRESS!

VOICE VOLUME = 5 out of 5

You approach life with an "Anything is possible!" attitude. You believe envisioning a new future is always the highest priority. You are always seeking to find the quickest, fastest and most efficient ways so that they can win. You value "outside the box thinking," in order to make progress and tend to seek out the most interesting people to learn from and add to your body of knowledge. You also think you're "right" most of the time. Your competitiveness and abrasive personality can make you hard to love. You always appear to be working, even social interactions appear calculated and strategic. Colleagues and subordinates can often feel like pieces on your strategic chess board. You respect strength and sacrifice, often failing to extend compassion and care to those who are struggling.

When you learn how to be as compassionate as you are strategic, there is nothing that can stop you.

CHAMPION OF:

- Strategic Vision
- Results-Driven
- Problem Solving

WATCH OUT FOR:

Pioneers can lack sensitivity, can be unwilling to listen, and perceived as arrogant.

EMPOWER BY:

Don't worry – they empower themselves. Just affirm their competence.

7%
of the population

INSIGHTS:

Circle 3 insights below that you want to remember and work on.

- Beware the intellectual superiority complex, you don't have all the best ideas, sometimes you are actually wrong.
- Take time to truly hear the views and opinions of others on the team, memorize the rules of engagement.
- Only 7% of people view the world through your eyes - remember winning is not the driving motivation for most people.
- Your team knows you are competent, they are not convinced you know anything about them or their life outside of work.
- Find a Nurturer and ask them to mentor you in how they see the world.
- Take time each day to encourage someone who doesn't deserve it.
- If you are wrong, fight your initial instinct to justify your decision and deflect blame. You will earn respect and influence if you own up to your mistakes.

VOICE ORDER

According to your opinion... order each of your 5 Voices from one to five on the left column. Use the right column to compare your voice order from the online assessment at 5voices.com. Number one is what you believe your foundational voice to be (your default pattern of communication and thinking) and number five is your least natural voice, which you find harder to access and value.

YOUR OPINION:

5 VOICES ASSESSMENT:

01

|

02

|

03

|

04

|

05

01

|

02

|

03

|

04

|

05



NEXT STEPS

THE ESSENTIALS



Pray. Serve. Grow.

Pray and ask God to strengthen the gifts and passions inside of you. However, don't pray passively. Pray actively. "Fan into flames the spiritual gift God gave you" (see 2 Timothy 1:3-18). Grow in your gift by using your gift to serve people.

Take 5 Voices online quiz.

Understanding your strengths and weaknesses, your weapons system and rules of engagement, and how your voice can potentially impact others— positively or negatively—can be a game changer. Take the Five Voices online assessment at 5voices.com.

Find your team.

Now that you've discovered your God-given gifts, find the team where you can use those gifts to make a difference in the lives of others. For a comprehensive list of teams and their descriptions, see pages 74-75.

FIND.

03



STEP 3: FIND

“God has given each of you a gift from his great variety of spiritual gifts. Use them well to serve one another.” 1 PETER 4:10 (NLT)

WHAT STANDS IN THE WAY?

Who Am I?

What if they?

I have never...

Use someone else....

“But you are a chosen generation, a royal priesthood, a holy nation, His own special people, that you may proclaim the praises of Him who called you out of darkness into His marvelous light.”

1 PETER 2:9 (NKJV)

“

But Moses protested to God, “Who am I to appear before Pharaoh? Who am I to lead the people of Israel out of Egypt?” God answered, “I will be with you. And this is your sign that I am the one who has sent you: When you have brought the people out of Egypt, you will worship God at this very mountain.”

EXODUS 3:11-12

WELCOME TO TRAIL CREW

“Whoever wants to be a leader among you must be your servant, and whoever wants to be first among you must become your slave. For even the Son of Man came not to be served but to serve others and to give his life as a ransom for many.”

MATTHEW 20:26-28 (NLT)

WE > ME.

Trail Crew is our family of servants at Mountain Life. We exist to help people become fully alive in Jesus.

Our Trail Crew Teams have different concentrations, but we are **ONE TEAM** with **ONE PURPOSE**: to help people of all ages have the best possible experience at Mountain Life. We equip others to take steps to know God, find freedom, discover purpose and make a difference for the kingdom.

WE LOVE _____

The members of the council were amazed when they saw the boldness of Peter and John, for they could see that they were ordinary men with no special training in the Scriptures. They also recognized them as men who had been with Jesus. ACTS 4:13

Develop your _____

Develop your _____

Develop your _____

WE LOVE _____

Whoever wants to be a leader among you must be your servant, and whoever wants to be first among you must be the slave of everyone else. For even the Son of Man came not to be served but to serve others and to give his life as ransom for many. MARK 10:43-45

Be a _____

Be a _____

Be _____

WE PURSUE _____

They were completely amazed and said again and again, “Everything he does is wonderful.” MARK 7:37

Do _____

Do things _____

Do _____

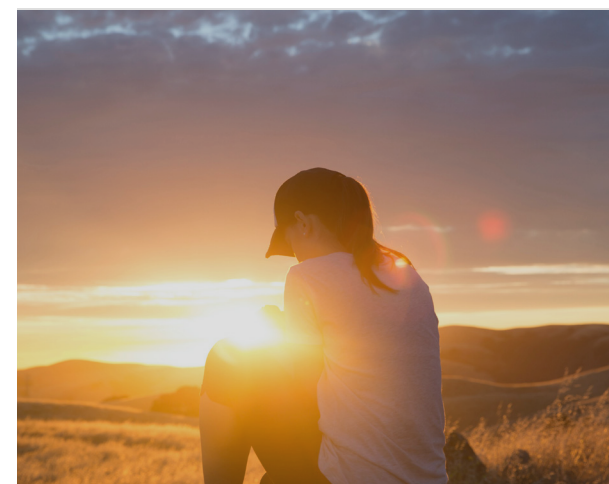
WE _____ JOY.

Always be full of joy in the Lord. I say it again rejoice! PHILIPPIANS 4:4

Be _____

Be _____

Be _____



SMART GOALS

TIP: Make your goals SMART. To be SMART, they must meet five criteria:

S Specific: Your goals must identify exactly what you want to accomplish in as much specificity as you can muster.

Bad: Lose weight.

Good: Lose 20 pounds and do 20 sit-ups in a row.

M Measurable: As the old adage says, "You can't manage what you can't measure." If possible, try to quantify the result. You want to know absolutely, positively whether or not you hit the goal.

Bad: Pay off debt in a year.

Good: Pay \$2,000 a month or \$460 a week.

A Actionable: Every goal should start with an action verb (e.g., quit, run, finish, eliminate, etc.) rather than a to-be verb (e.g., am, be, have, etc.).

Bad: Be more consistent in journaling.

Good: Write one full page two days per week.

R Realistic: You have to be careful here. A good goal should stretch you, but you have to add a dose of common sense. I go right up to the edge of my comfort zone and then step over it. (If I am not out of my comfort zone, I'm not thinking big enough.)

Bad: Be a better husband.

Good: Go on two dates a month with my wife to strengthen our relationship.

T Timely: Every goal needs a date associated with it. When do you plan to deliver on that goal? It could be by year-end (December 31) or it could be more near-term (September 30). A goal without a date is just a dream. Make sure that every goal ends with a by-when date.

Bad: Lose 20 pounds.

Good: Lose 20 pounds by December 31.

S

M

A

R

T



“

If we cooperate with Him in loving obedience, God will manifest Himself to us, and that manifestation will be the difference between a nominal Christian life and a life radiant with the light of His face.

A.W. Tozer

NEXT STEPS: FIND

THE ESSENTIALS



Choose your excuse.

Which of the excuses that Moses gave God do you relate to the most? As you identify it, find a mature follower of Jesus, and ask them to help you set a plan to get around it. Let them challenge you to develop an excuse-proof life of obedience.



Identify one quality.

We all have many steps to take to get where we want to be, but we can't take all of them at once. Try to take one next step. Identify one leadership quality that you would like to develop. Find a friend to keep you accountable and set a SMART goal to reach success.



Read Code of Conduct.

Go over the expectations of being a successful member of Trail Crew at Mountain Life in the appendix.



ENGAGE.

“GO INTO ALL THE WORLD AND PREACH THE GOOD NEWS TO EVERYONE.”

MARK 16:15

STEP 4: ENGAGE



2

THAT MAKES A DIFFERENCE

GO INTO THE WORLD AND PREACH THE GOSPEL TO ALL CREATION

“For we are God’s masterpiece. He has created us anew in Christ Jesus, so we can do the good things he planned for us long ago.”

EPHESIANS 2:10

“Anyone who builds on that foundation may use a variety of materials— gold, silver, jewels, wood, hay, or straw. But on the judgment day, fire will reveal what kind of work each builder has done. The fire will show if a person’s work has any value. If the work survives, that builder will receive a reward. But if the work is burned up, the builder will suffer great loss. The builder will be saved, but like someone barely escaping through a wall of flames.”

1 CORINTHIANS 3:12-15 (NLT)

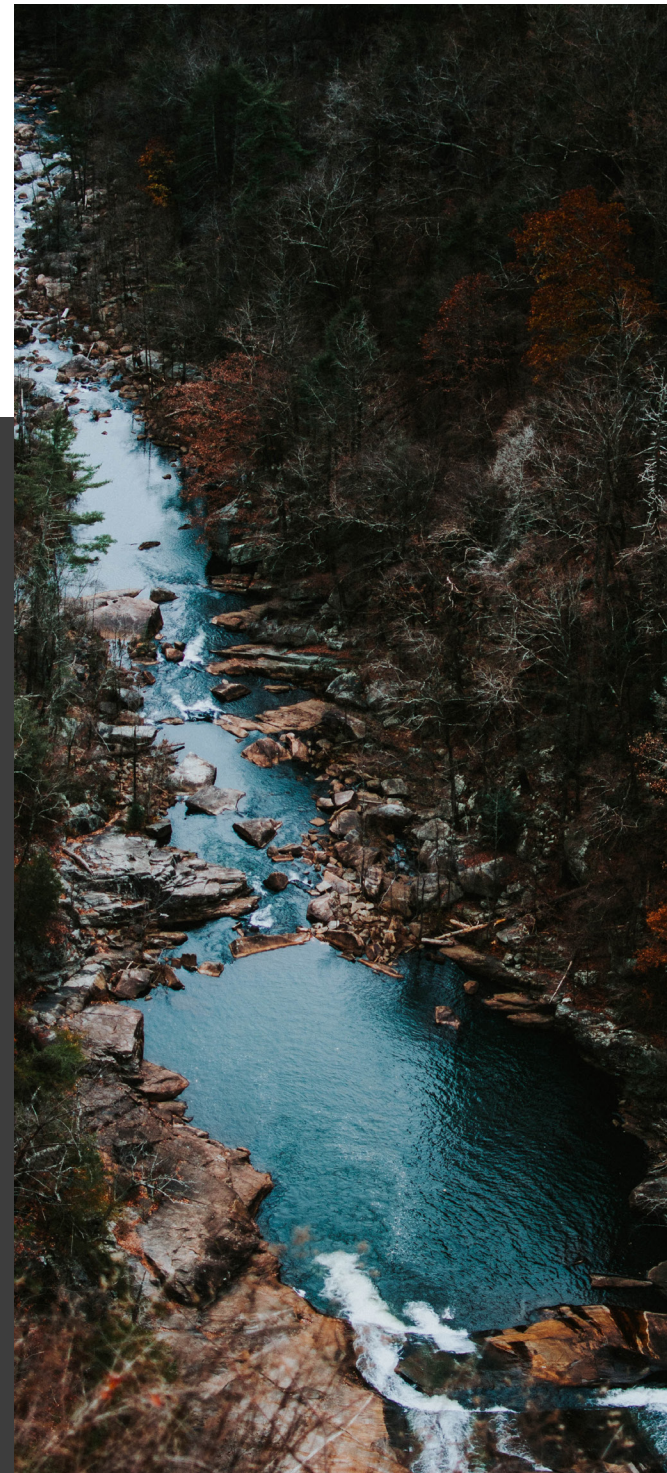


1

MAKE A DIFFERENCE

GOD SAVED US AND CALLED US TO LIVE A HOLY LIFE. HE DID THIS, NOT BECAUSE WE DESERVED IT, BUT BECAUSE THAT WAS HIS PLAN FROM BEFORE THE BEGINNING OF TIME.

2 TIMOTHY 1:9



3

WHO WANT TO MAKE A DIFFERENCE

“Two people are better off than one, for they can help each other succeed.”

ECCLESIASTES 4:9 (NIV)



WE > ME.

L I F E T R A I L

MOUNTAIN LIFE TRAIL CREW

MINISTRY TEAMS

MEN'S MINISTRY

We host Bible studies, small groups and special events that help men grow closer to God.

WOMEN'S MINISTRY

We develop a heart of servant leadership through hosting small group Bible studies, providing mentor/mentee relationship opportunities and planning special events designed to share the richness of being in relationship with Jesus with women of all ages and stages.

STUDENT MINISTRY

We help students in middle and high school get connected through small groups, retreats, and group meetings on Sunday mornings and weekday evenings.

ML KIDS

We invests in the lives of children in nursery- 5th grade with age-appropriate worship and biblical teaching reinforced through small group discussion and activities in a safe and welcoming environment.

MISSIONS TEAM

Our team facilitates outreaches and mobilizes life changers locally, regionally and internationally.

PRAYER TEAMS

DECISION TEAM

Our team stands alongside people who make decisions to follow Jesus, hear their story, pray for them, and point them toward their next step.

PRAYER TEAM

Our team provides prayer covering for services, teams, ministries and the people of Mountain Life.

MOUNTAIN LIFE TRAIL CREW

EVENT & HOSPITALITY TEAMS

HOSPITALITY TEAM

We help create a hospitable environment by preparing coffee and other refreshments for before and after our services.

SPECIAL EVENTS TEAM

Our team serves at all special church-wide events, major holidays and special services through setup and teardown, serving food, working merchandise tables, etc.

OPERATIONS TEAMS

SUNDAY SUPPORT TEAM

Our team uses the gift of helps in support of our weekly services, through setup and teardown, preparing for first timers, supporting other teams, etc.

WELCOME TEAM

Our team welcomes people to our Sunday services at Mountain Life, hands out gift bags to our first-time visitors and is available to answer questions anyone may have.

ROOM HOSTS

Our team provides direction for people as they enter the worship venue. We also assist with needs during service; collecting offering, preparing communion, etc.

SECTION HOSTS

We bring a personal touch to our services by connecting with people in a specific section of seats before and after services.

TRAFFIC & PARKING TEAM

Serves the church by directing the flow of traffic on and off the property to ensure the safety of drivers and pedestrians.

SAFETY TEAM

Provides assistance and direction involving all safety-related issues at all Mountain Life campuses, including, but not limited to, law enforcement, security, medical and general safety concerns.

LEADERSHIP TEAMS

LIFE TRAIL LEADERS

Our team serves as the hosts for Life Trail. We greet guests, provide materials and assist those discovering their next step at Mountain Life.

MOUNTAIN LIFE GROUP LEADERS

We facilitate small groups and build relationships with group members while helping them discover their next step.

BROADCAST TEAMS

PRODUCTION TEAM

Assist in the production of the overall worship experience by creating an engaging and distraction free environment for the church to connect with God through worship and hearing the message.

VIDEO TEAM

Provides video support for all services and events requiring video coverage. Operate cameras, audio equipment and computer programs working in a live, fast-paced broadcast environment.

CREATIVE TEAMS

WORSHIP TEAM

We facilitate a powerful worship experience through vocals and other instruments.

CREATIVE TEAM

We are ML ambassadors that creatively capture and share moments, through photos, videos, and graphics to communicate what God is doing in and through Mountain Life.

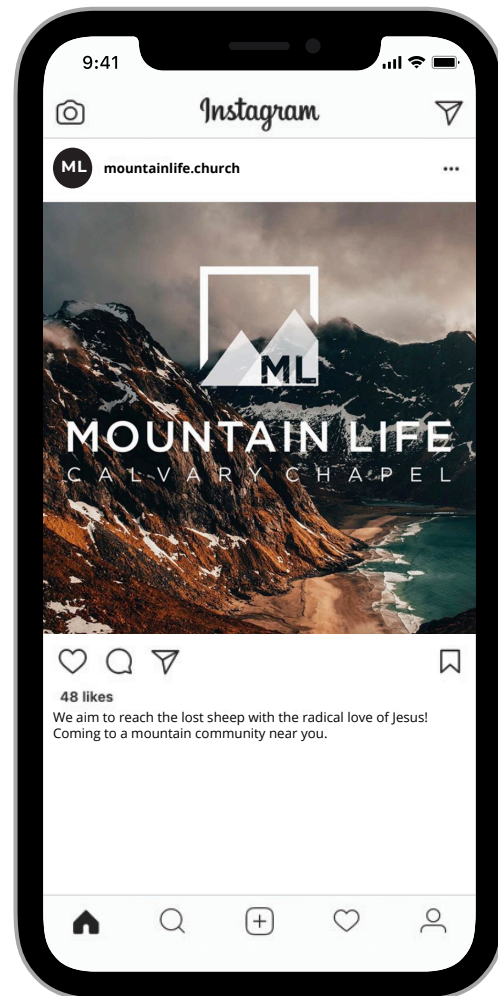
ADMIN TEAMS

OFFICE SUPPORT TEAM

We help with various office and administrative needs throughout the week.

BE THE HANDS AND FEET

As part of our “Same Message, New Methods” philosophy, we aim to reach people where they are at, which in today’s world, more often than not, means on their devices and social media. Social media can be overwhelming and burdening, it also can be the easiest way to reach the lost sheep with the life-changing message of the gospel!



ENGAGE & SHARE

Follow, like, comment and share Mountain Life posts to your social media accounts. You never know who, when, where and how you might reach someone and change their life forever!

BE BOLD IN YOUR FAITH

Social media can be a great platform to invite people to church, share what God is teaching you, how God is working in and through you, and to create real connections and opportunities for ministry!

APPROACH IT BIBLICALLY

Would Jesus post that? Social media is a reflection of your character. As believers, we are representing Christ and His kingdom so we encourage you to think about how you can build up and encourage as opposed to tear down and divide.

User-generated content is one of the fastest and easiest ways we can grow our audience, and achieve our mission to reach as many people as quickly as possible. When you are out living the #mountainlife, don’t be afraid to share it on social media and tag us!

NEXT STEPS: ENGAGE

THE ESSENTIALS

01

Join Trail Crew.

Meet the team leaders and attend an orientation with the team that best fits your design to learn how to get involved. Schedule a follow up interview with a team leader.

02

Get in a ML Group.

Check out the group types in the appendix, then visit the groups page on our website to find a group just for you.

03

Complete Documents.

Complete the Life Team application. Complete any ministry specific forms.

04

Capture & Share.

Take a photo and share a brief testimonial about your Life Trail experience. Be emboldened to share your experience on social media, with a friend, or as a conversation starter to invite someone to church!

L I F E T R A I L

APPENDIX

CONGRATULATIONS
ON COMPLETING LIFE
TRAIL. YOU'VE FOUND
THE TRAILHEAD AND
YOU ARE NOW ON THE
PATH THAT LEADS TO
LIFE!

L I F E T R A I L

WHAT WE BELIEVE

JESUS CHRIST is the foundation and cornerstone of the church. He is the Son of the Living God, the second member of the Triune God; the Father, the Son, and the Holy Spirit. Through His sacrifice on the cross and resurrection at the hands of the Father, He has provided through His grace the only means to obtain eternal life.

(1 Corinthians 3:11, Ephesians 2:20, Romans 5:6-10)

THE BIBLE is the inspired, inerrant word of God. It is relevant and applicable to every person and circumstance today. For this reason we put a great deal of emphasis on teaching it in public, and studying it in private.

(1 Timothy 4:13, 2 Timothy 3:16-17, 1 Thessalonians 2:13)

WORSHIP is our response to God the Father who alone is worthy of our praise. It is our desire to worship God in all circumstances and bring praise to His name.

(John 4:23, Colossians 3:16, 1 Thessalonians 5:16-18)

OUR DEVOTION to Him inspires us to celebrate His sacrifice by sharing communion regularly. We believe water baptism to be an outward sign of inward work that He alone has accomplished in the believer's life.

(Matthew 28:19-20, 1 Corinthians 11:23-26, Mark 14:22-25)

CHRISTIAN GROWTH is our personal commitment both before God and toward one another. This is encouraged through abiding in Christ, obedience to God's word, effective prayer, and our fellowship together.

(John 15:4, Romans 8:29, Ephesians 5:18, Acts 2:42)

We believe worship of God should be spiritual. Therefore we yield ourselves to the leading of the Holy Spirit to direct us.

(JOHN 4:24)

WE BELIEVE WORSHIP OF GOD SHOULD BE FRUITFUL. THEREFORE, WE LOOK FOR HIS LOVE IN OUR LIVES AS THE EVIDENCE THAT WE HAVE TRULY BEEN WORSHIPPING HIM.

(1 JOHN 4:7-8, 1 CORINTHIANS 13, GALATIANS 5:22-23)

WE BELIEVE WORSHIP OF GOD SHOULD BE INTELLIGENT. THEREFORE, WE EMPHASIZE BIBLE TEACHING SO THAT GOD MAY INSTRUCT US.

(2 TIMOTHY 3:16-17)

We believe worship of God should be inspirational. Therefore, we give a great emphasis to music and praise in our worship.

(PSALM 149)



MOUNTAIN LIFE
CALVARY CHAPEL



MOUNTAINLIFE.CHURCH