



WARRIOR'S HEART

BUILDING GOD'S KINGDOM ONE MAN AT A TIME

BAND OF
BROTHERS
MEN'S MINISTRY

A CHRISTIAN'S GUIDE TO

cultural engagement

THURSDAYS, JUNE 6 – AUG 1

6:30 – 7:30A



A Christian's Guide to Cultural Engagement Week 3: Losing Focus Along the Way

Review:

James 4:7 “But resist the enemy and he will flee...”

1 Peter 5:9 “Resist him and be firm in the faith...”

Romans 12:2-3: ² Do not be conformed to this world,³ but be transformed by the renewal of your mind, that by testing you may discern what is the will of God, what is good and acceptable and perfect.

Galatians 5:24: Now those who belong to Christ Jesus have crucified the flesh with its passions and desires.

Galatians 5:16-18: ¹⁶ I say then, walk by the Spirit and you will not carry out the desire of the flesh. ¹⁷ For the flesh desires what is against the Spirit, and the Spirit desires what is against the flesh; these are opposed to each other, so that you don't do what you want. ¹⁸ But if you are led by the Spirit, you are not under the law.

Jonah 3:10 ¹⁰ Then God saw their actions—that they had turned from their evil ways—so God relented from the disaster He had threatened to do to them. And He did not do it.

Jonah 4:1-3: But Jonah was greatly displeased and became furious. ² He prayed to the Lord: “Please, Lord, isn’t this what I said while I was still in my own country? That’s why I fled toward Tarshish in the first place. I knew that You are a merciful and compassionate God, slow to become angry, rich in faithful love, and One who relents from sending disaster. ³ And now, Lord, please take my life from me, for it is better for me to die than to live.”

Ephesians 6:10-12 ¹⁰ Finally, be strengthened by the Lord and by His vast strength. ¹¹ Put on the full armor of God so that you can stand against the tactics of the Devil. ¹² For our battle is not against flesh and blood, but against the rulers, against the authorities, against the world powers of this darkness, against the spiritual forces of evil in the heavens.

Proverbs 5:1-6 My son, pay attention to my wisdom; listen closely to my understanding ² so that you may maintain discretion and your lips safeguard knowledge. ³ Though the lips of the forbidden woman drip honey and her words are smoother than oil, ⁴ in the end she’s as bitter as wormwood and as sharp as a double-edged sword. ⁵ Her feet go down to death; her steps head straight for Sheol. ⁶ She doesn’t consider the path of life; she doesn’t know that her ways are unstable.

Discussion:

- *What is a question you would like to discuss next week in class?*
- *What are the biggest challenges you personally experience in interacting with others in culture today?*
- *How are you doing at staying focused on the Mission?*
- *Is it a bigger danger for you to conform or to collide with culture?*
- *Are there groups of people you struggle to accept or to see as God’s image-bearers? Why do they seem unlovable to you? Do you think there are groups of people in society that our churches struggle to accept or that our churches see as unlovable?*

into the

HALL OF GRACE

an evening with

DARRYL STRAWBERRY

For men of all ages | Cost: \$15-\$40

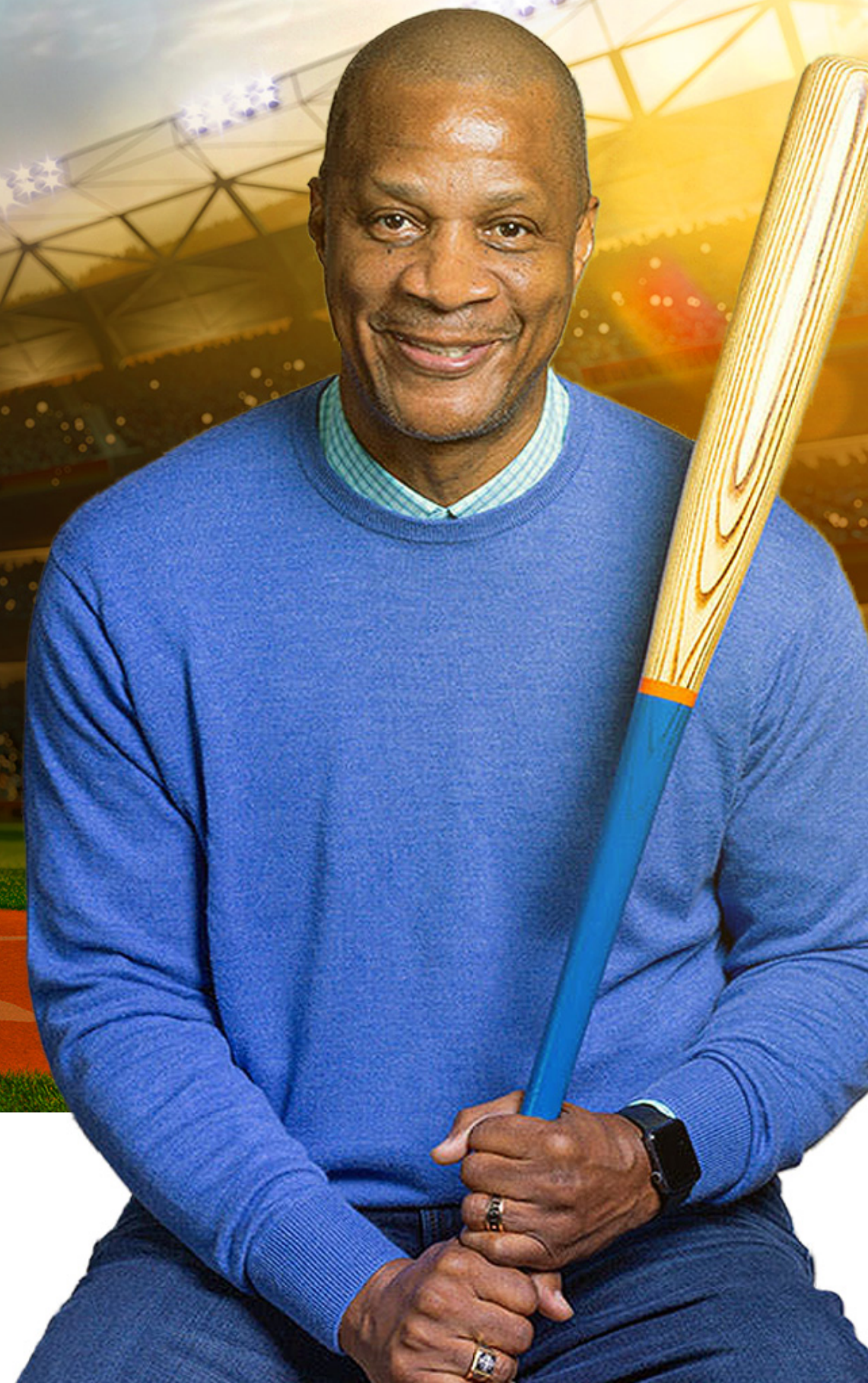
Sat, June 29 @ 6:00-8p — The Loop Campus

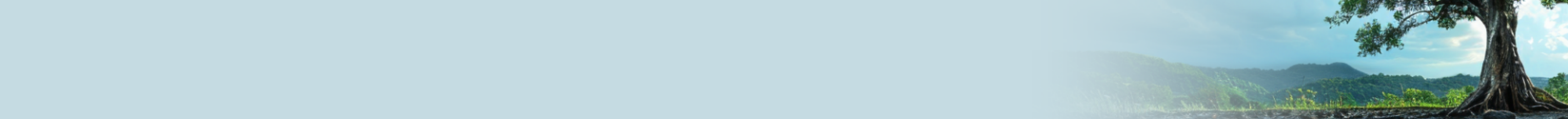
7401 Katy Fwy, Houston, TX 77024

Visit HoustonFirst.org
for more information.

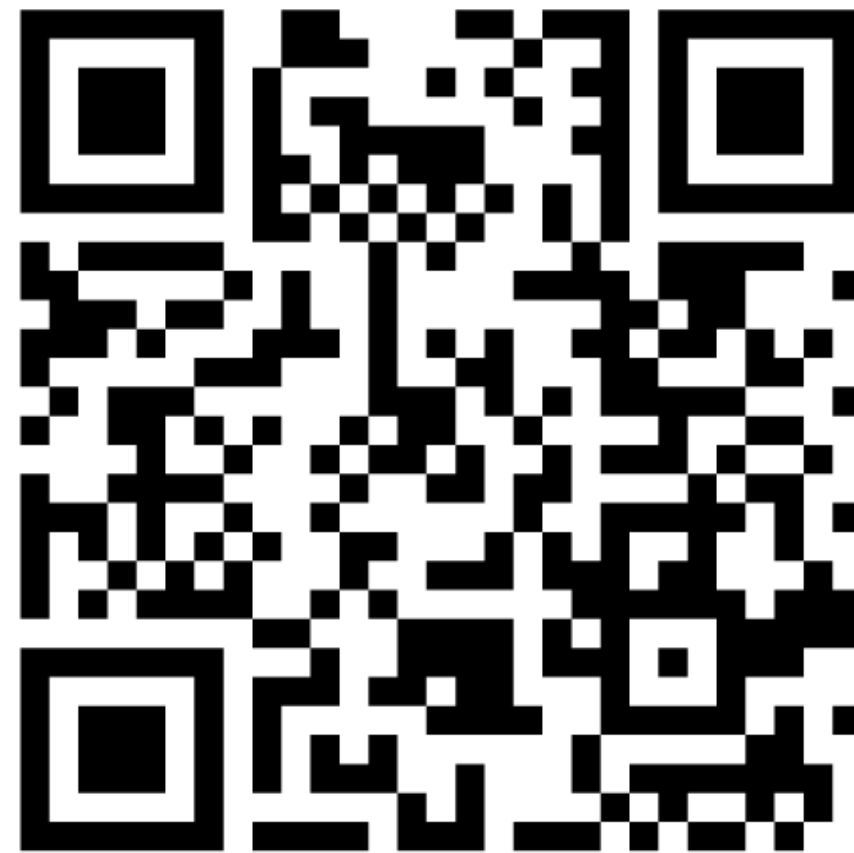


HOUSTON'S FIRST
BAPTIST CHURCH





Let us Know Your Questions



BAND OF
BROTHERS
MEN'S MINISTRY

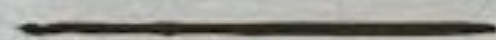


WARRIOR'S HEART
BUILDING GOD'S KINGDOM ONE MAN AT A TIME

Previously on?



IMAGO

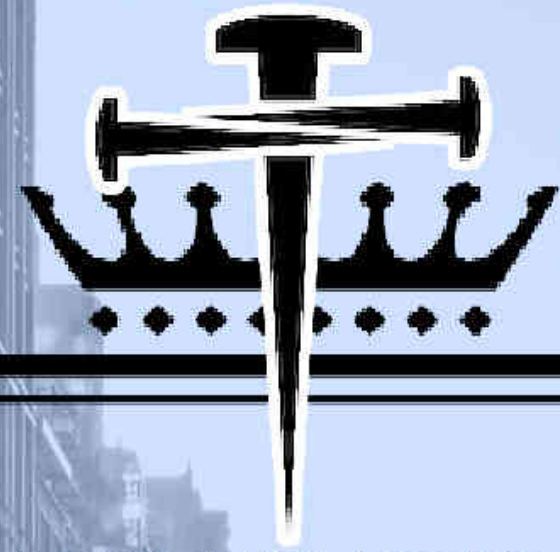


DEI

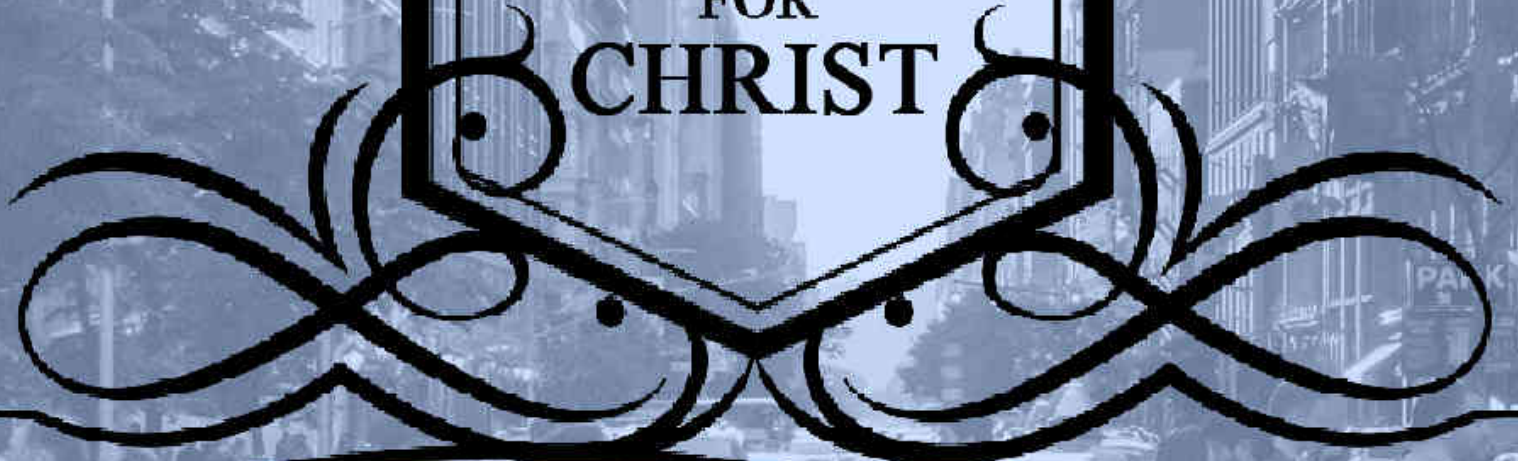


The image features a dramatic landscape with rolling mountains in the foreground and a sky filled with clouds at sunset or sunrise. The text "CITIZENS OF HEAVEN" is overlaid in a large, bold, sans-serif font. The letters are filled with a gradient of colors, transitioning from a light blue on the left to a bright yellow in the center, and then to a deep orange and red on the right. The text is centered horizontally and spans most of the width of the image.

CITIZENS OF
HEAVEN



AMBASSADOR
FOR
CHRIST



BE YE RECONCILED TO GOD
2COR5.17-21 (KJV)



Kingdom Ambassadors



- 1. Represent the Homeland**
- 2. Faithful to Values of Homeland**
- 3. Live in 2 worlds**
- 4. Speak both languages**
- 5. Know both cultures**
- 6. Promote Peace**
- 7. Seek to bring favor on homeland**



WARRIOR'S HEART

BUILDING GOD'S KINGDOM ONE MAN AT A TIME

BAND OF
BROTHERS
MEN'S MINISTRY

A CHRISTIAN'S GUIDE TO

cultural engagement

Discussion

- *Why cultural engagement matters to you?*
- *What is going well as an ambassador?*
- *What is a challenge of being an ambassador?*

But the LORD said to Samuel, "Do not look at his appearance or his stature, because I have rejected him. Man does not see what the LORD sees, for man sees what is visible, but the LORD sees the heart.

1 SAMUEL 16:7

The Journey Ahead

- Look at the two ways we can lose focus on the mission.
- Evaluate our own hearts in these two areas.



— LOSING FOCUS —



— LOSING FOCUS — — — — —
CONFORMED TO CULTURE

“You are the salt of the earth. But if the salt should lose its taste, how can it be made salty? It’s no longer good for anything but to be thrown out and trampled on by men.

“You are the light of the world. A city situated on a hill cannot be hidden.

Matthew 5:13-14

— FOUR VOICES — — — — —

1. THE ENEMY

2. THE WORLD

3. THE FLESH

4. THE HOLY SPIRIT

— 1. THE ENEMY — — — — —

⁷ BUT RESIST THE ENEMY AND HE
WILL FLEE...

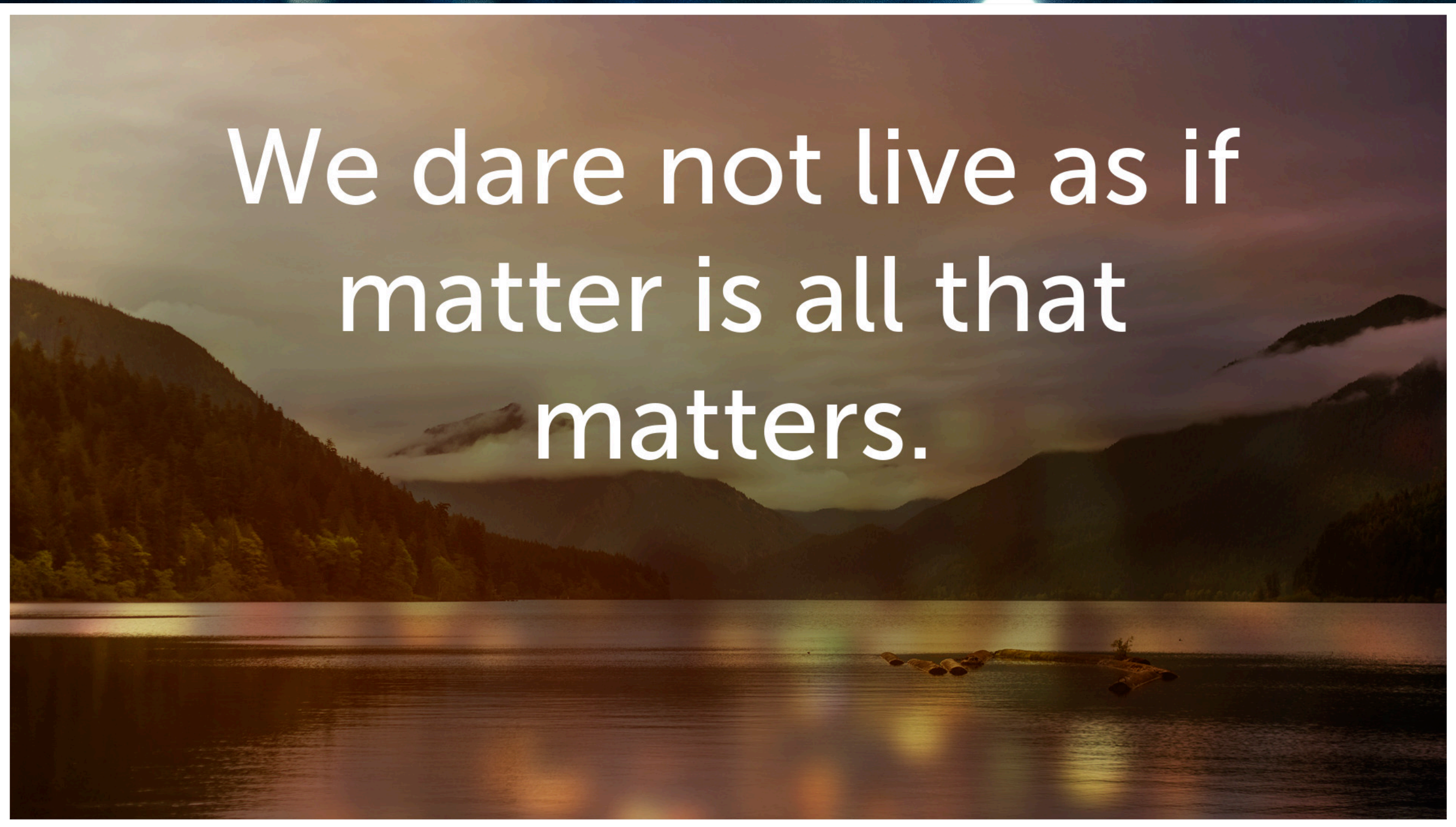
JAMES 4:7

⁹ RESIST HIM AND BE FIRM IN THE
FAITH...

1 PETER 5:9

— 2. THE WORLD — — — — —

We dare not live as if
matter is all that
matters.



— 2. THE WORLD — — — — —

² DO NOT BE CONFORMED TO THIS WORLD,³ BUT BE TRANSFORMED BY THE RENEWAL OF YOUR MIND, THAT BY TESTING YOU MAY DISCERN WHAT IS THE WILL OF GOD, WHAT IS GOOD AND ACCEPTABLE AND PERFECT.

ROMANS 12:2-3

— 3. THE FLESH — — — — —

²⁴ NOW THOSE WHO BELONG TO CHRIST JESUS HAVE CRUCIFIED THE FLESH WITH ITS PASSIONS AND DESIRES.

GALATIANS 5:24

— 4. THE HOLY SPIRIT — — — — —

¹⁶ I SAY THEN, WALK BY THE SPIRIT AND YOU WILL NOT CARRY OUT THE DESIRE OF THE FLESH. ¹⁷ FOR THE FLESH DESIRES WHAT IS AGAINST THE SPIRIT, AND THE SPIRIT DESIRES WHAT IS AGAINST THE FLESH; THESE ARE OPPOSED TO EACH OTHER, SO THAT YOU DON'T DO WHAT YOU WANT. ¹⁸ BUT IF YOU ARE LED BY THE SPIRIT, YOU ARE NOT UNDER THE LAW.

~GALATIANS 5:16-18

— 4. THE HOLY SPIRIT — — — —

YES!



— LOSING FOCUS —

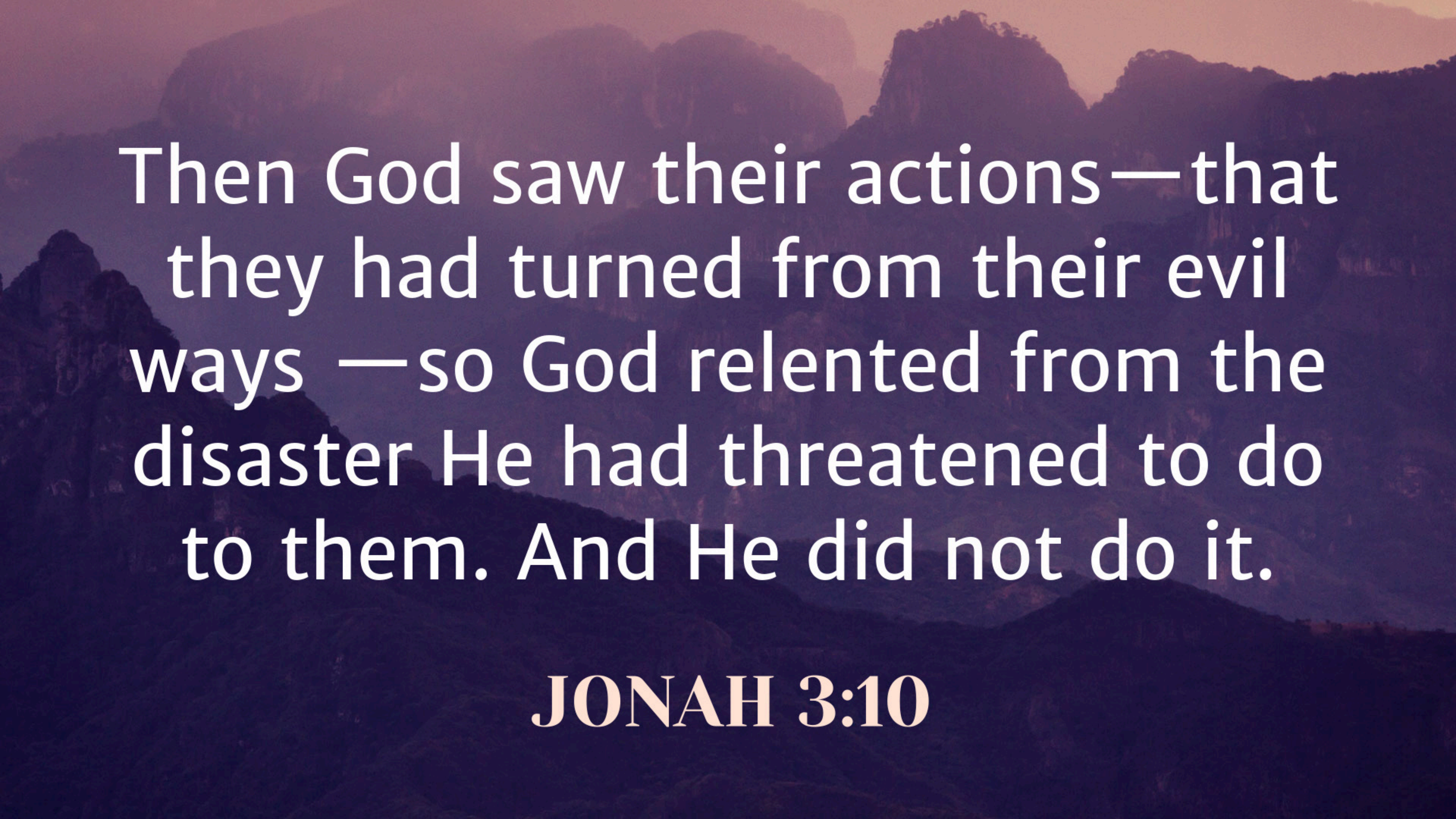
COLLIDING WITH CULTURE

WAS VRENT
TITOLI

JONAH

an example to avoid





Then God saw their actions—that they had turned from their evil ways —so God relented from the disaster He had threatened to do to them. And He did not do it.

JONAH 3:10



S₁

U₁

C₃

C₃

E₁

S₁

S₁

S₁

P₃

F₁

Q₄

W₄

P₃

E₁

R₁

H₄

Z₁₀

But Jonah was greatly displeased and became furious. He prayed to the LORD: "Please, LORD, isn't this what I said while I was still in my own country? That's why I fled toward Tarshish in the first place. I knew that You are a merciful and compassionate God, slow to become angry, rich in faithful love, and One who relents from sending disaster. And now, LORD, please take my life from me, for it is better for me to die than to live."

Jonah 4:1-3

HCSB

Lord, I ask that you would give me
your heart for those around me, that
I may see them through your eyes,
hear their stories through your ears,
and love them through your love.

A Prayer to Pray

Discussion

- *What is a question you would like to discuss next week in class?*
- *What are the biggest challenges you personally experience in interacting with others in culture today?*
- *How are you doing at staying focused on the Mission?*
- *Is it a bigger danger for you to conform or to collide with culture?*
- *Are there groups of people you struggle to accept or to see as God's image-bearers? Why do they seem unlovable to you? Do you think there are groups of people in society that our churches struggle to accept or that our churches see as unlovable?*