

WHAT IS A HUMAN?



WHAT IS MAN THAT YOU ARE MINDFUL OF HIM?

Implications of the Answer

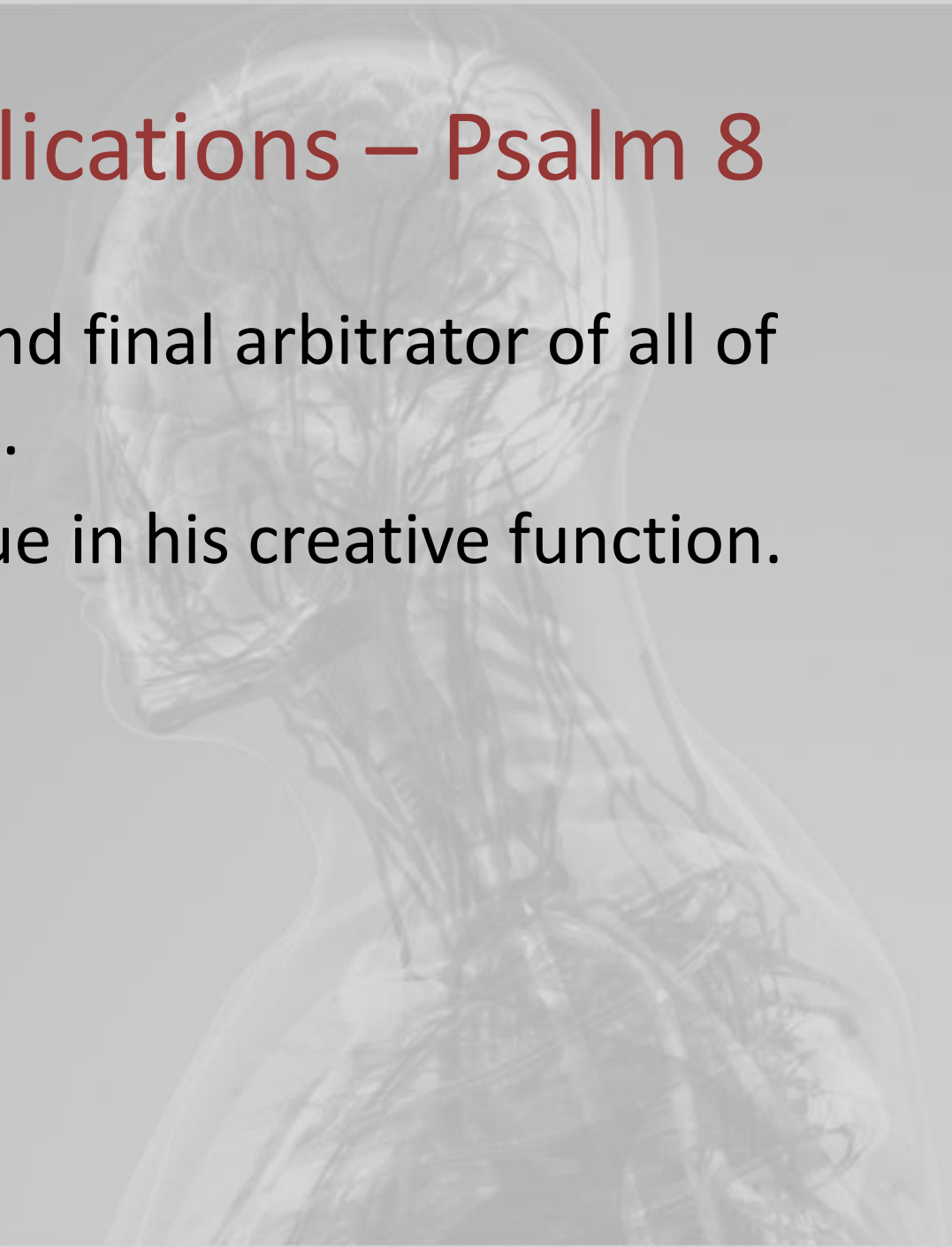
1. Existence: What is our purpose?
2. Vocation: Why do we work?
3. Composition: What is the image of God?
4. Beginnings: When does life begin? (Abortion)
5. Endings: When does life end? (Euthanasia)
6. Identity: Who are we? (Gender distinction)
7. Relationships: Who are we to marry, and how are we to get along? (Homosexuality & Racism)
8. Body: How are we to treat our body? (Health and Cremation)
9. Stewardship: How do we care for the rest of creation? (Conservationist)

Biblical Foundations – Psalm 8

1. God is the self-existent, completely independent Creator worthy of glory (vs.1-2).
2. God created and cares for frail mankind (vs. 3-4).
3. God defines the upper and lower boundaries for mankind (v. 5).
4. God establishes the responsibilities for mankind (vs. 6-8).
5. God is the self-existent, completely independent Creator worthy of glory (vs.9).

Biblical Implications – Psalm 8

1. God is the first and final arbitrator of all of mankind's affairs.
2. Mankind is unique in his creative function.



Man: In God's Image (Gen 1:26)

Man is uniquely made in the image of God and thus is like God and represents God.

- *Image*: something that represents something else (statues – 1 Sam 6:5, 11; painting – Ezek 23:14; idols – Num 33:42)
- *Likeness*: something that is similar but not identical to the thing it represents (drawings – 2 Chron 4:3-4; children – Gen 5:3)

Explicit Implications of the *Imago Dei*

1. Man is unique from other creatures who are not in the image of God.
2. Man is the closest creature to the likeness of God.
3. All of mankind carry the likeness of the Godhead within them.
4. God desired that mankind would represent Him among His creation.

What are the elements of the image of God?

1. Moral Aspects: Mankind understands there is a right and a wrong.
 - a. We are born with a moral conscience/compass (Romans 1).
 - b. We have moral accountability (Revelation 20).

What are the elements of the image of God?

2. Spiritual Aspect: Mankind has an immaterial part of his being.
 - a. Mankind is described as having a soul, spirit, mind, heart, and strength.
 - b. Mankind understands that there is a greater Being (Rom 1).
 - c. Mankind is granted immortality (Rev 20).

What are the elements of the image of God?

3. Mental Aspect: Mankind has the cognitive ability to develop creatively, think abstractly and feel with complexity.
 - a. Man develops the arts (music, literature, art, inventiveness, etc.).
 - b. Man reasons and communicates abstractly (philosophy, time, tone and texture, etc.)
 - c. Man feels multiple emotions simultaneously in differing degrees.

What are the elements of the image of God?

4. Relational Aspects: Mankind needs and sustains community.
 - a. Mankind seeks family for extended, lifelong, legacy relationships.
 - b. Mankind develops towns, cities, and countries to foster harmonious relationships.

What are the elements of the image of God?

5. Physical Aspects: Mankind's body reflects the characteristics of God's personhood.
 - a. God is spirit and thus has no physical body or boundaries (John 4:24).
 - b. Mankind is given eyes (God sees), ears (God hears), mouths (God speaks), taste and touch (God enjoys), feet (God is mobile), etc.
 - c. Other creatures have similar physical characteristics, but mankind's physical body reflects something of God's character.

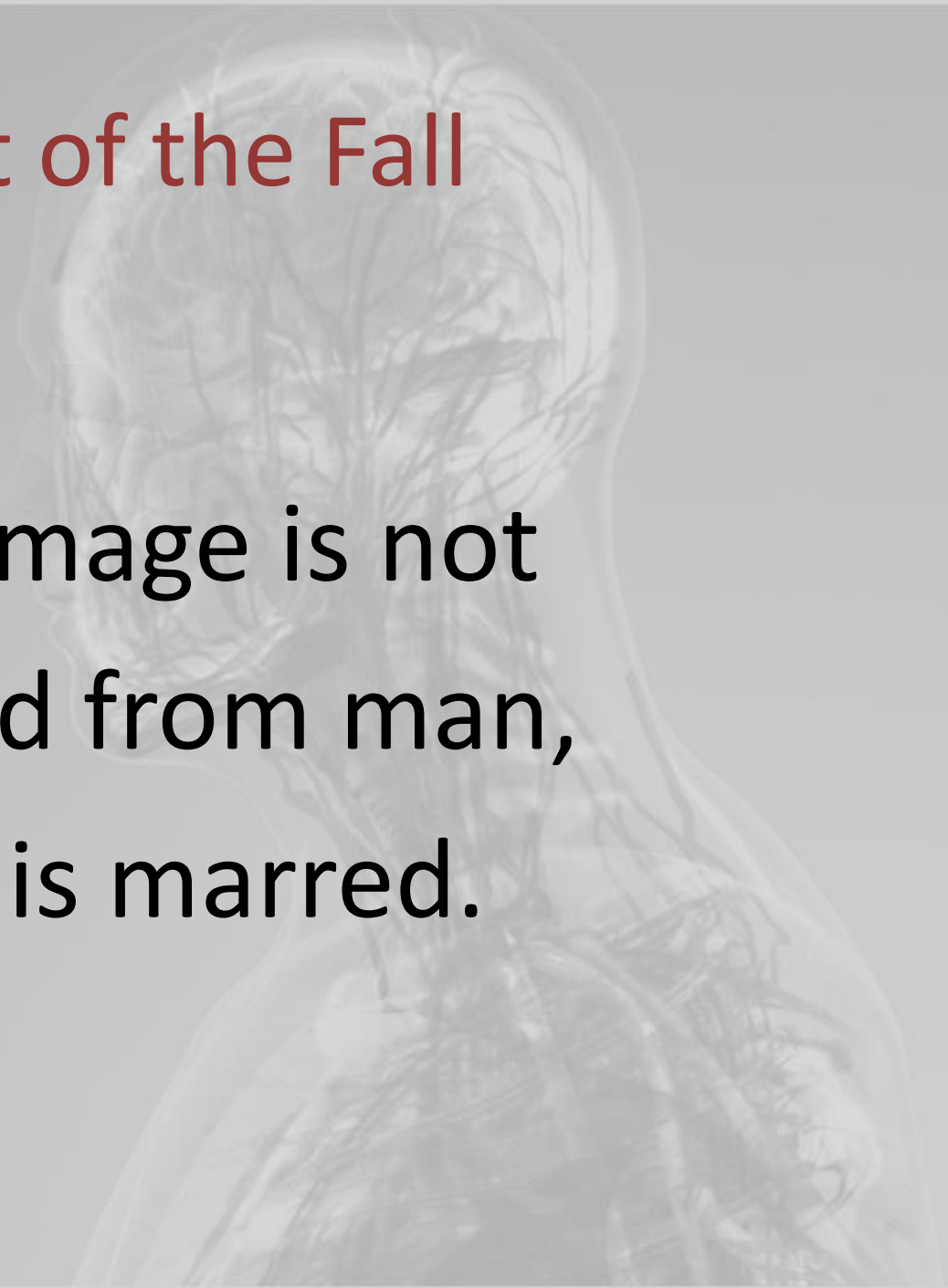
Man is like God!

Then the Fall.

1. Moral Aspect: Moral purity was lost. Man's will became bound to his selfishness (Rom 6).
2. Spiritual Aspect: Spiritual death took place. Man was condemned (John 3).
3. Mental Aspect: The mind became dark and futile (Eph 4).
4. Relational Aspect: Relationships are no longer harmonious (Gen 3 & 4).
5. Physical Aspect: Physical death begins at birth (Gen 3).

Result of the Fall

God's image is not removed from man, but it is marred.



Renewal of the Image

1. Jesus became flesh (mankind) as the perfect image bearer, the second Adam (2 Cor 4:4; Col 1:15).
2. Believers are to be progressively renewed in the image of God (2 Cor 3:18; Eph 4:24; Col 3:10).
3. Believers will be recreated in the image of the Son of God (Rom 8:29; 1 Cor 15:49; 1 John 3:2).

Implications of the Image of God

All of humanity is created in God's image. This means that regardless of race or ethnicity, unborn or elderly, mental retardation or seriously ill, believers or unbelievers, all deserve full protection and honor as human beings.

WHAT IS A HUMAN?



WHAT IS MAN THAT YOU ARE MINDFUL OF HIM?