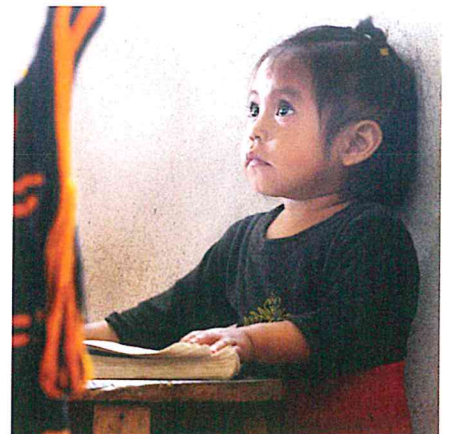
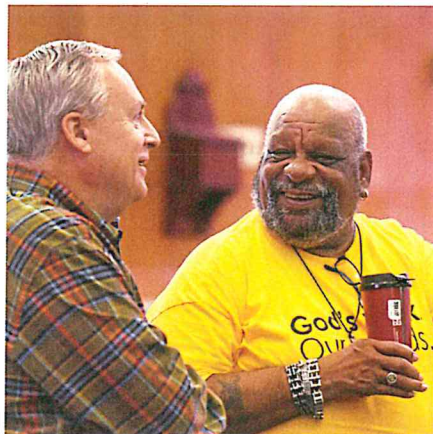
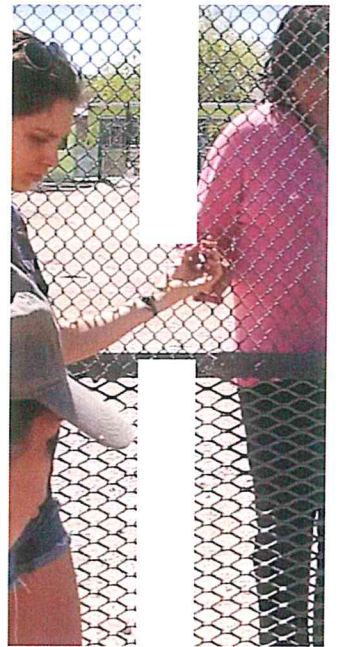
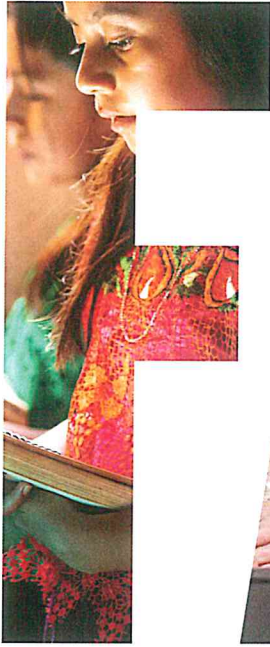




Evangelical Lutheran Church in America
God's work. Our hands.



ANNUAL REPORT



First Lutheran Church
Brookings, SD
September 2019 -
August 2020





A message from ELCA Presiding Bishop Elizabeth Eaton

Dear friends in Christ,

Stepping out in faith can be difficult. Martin Luther did it in 1517. The Evangelical Lutheran Church in America did it at the 2019 Churchwide Assembly. This church can be bold and daring because of our scriptural and Lutheran confessional understandings. Is it easy?

No. Do we always get it right? Probably not. Where we are in error, may God correct us.

The cross is our center. Faith, grace and Scripture alone are our guides. We are church. We are compelled by the gospel and our understanding that in Christ we have been set free to love and serve the neighbor. This loving and serving of our neighbor alongside courageous and faithful leaders is what offers hope to congregations.

Over the past 18 months we have made significant strides in our work on congregational vitality. This church has multiplied its efforts and leveraged its resources to enhance vitality in congregations. Our vision continues to evolve around strengthening our relationships with God, each other and the neighbors we serve. In this way we are addressing both local and global issues by being present in our own community and proactive with issues in the broader church.

This presence is made possible in significant ways through your giving of time, talents and financial resources to our work together. The success of our recent campaign, *Always Being Made New: The Campaign for the ELCA*, reflects the increasing

support for existing and new ministries that serve our communities here at home and others around the globe. Through regular, special and legacy gifts, \$250 million was given to support God's work. Through the spiritual practice of giving, we both acknowledge receiving God's gifts and share in God's generosity by passing on a portion to others. Together we are doing God's work in ways that we could not do otherwise.

As your congregation plans work for the coming year, I hope you will be both bold and daring, remembering God provides and desires abundant life for all. May you continue supporting God's work together with a spirit of solidarity, collaboration and generosity. We are all partners in the gospel, believing in Jesus Christ crucified and risen for the life of the world.

Stepping out in faith together,

A handwritten signature in black ink that reads "Elizabeth A. Eaton". The signature is written in a cursive, flowing style.

The Rev. Elizabeth A. Eaton
Presiding Bishop
Evangelical Lutheran Church in America

"So if anyone is in Christ, there is a new creation: everything old has passed away; see, everything has become new!" —2 Corinthians 5:17

Table of Contents

Annual Meeting Agenda.....	3
Minutes of September 22, 2019 Annual Meeting.....	4-5
Senior Pastor Dave Schoeld Report.....	6-7
Pastor Nyla Schoeld Report.....	8-9
Faith Formations Director Report.....	10-13
Music Coordinator Report.....	14
Cemetery Ministry Team Report.....	15-16
Welcome Desk and Activity Coordinator Report.....	16
Preschool Director Report.....	17-18
Mission Coffeehouse Manager Report.....	19-20
First Lutheran Church Women Report.....	21
Mission Quilters Report.....	22-24
FLC Foundation Report.....	25-27
Mission and Ministry Outreach Report.....	28-29
First Lutheran Church Balance Sheet.....	30
Dedicated Accounts Report.....	31-33
Statement of Income and Expense/Budget.....	34-35
Election to Council.....	35
Resolution of Remembrance.....	36
Resolution to Allow the Food Bank to Build a Facility on FLC Property.....	36-37
Statistical Report.....	38

2020 Annual Meeting Agenda

First Lutheran Church
Brookings, SD

September 20, 2020

10:30 am in the FLC Parking Lot or Zoom

Opening devotions from Pastor Dave Schoeld

- I. Call to Order and Welcome — Council Vice-President
- II. Approval of minutes from the September 22, 2019 Annual Meeting
- III. Senior Pastor Message
- IV. Acceptance of Written Reports
- V. Balance Sheet
- VI. Ministry Spending Plan
- VII. Election to Council
- VIII. Resolutions
 - A) Resolution of Remembrance
 - B) Resolution Regarding Food Pantry

Closing devotions from Pastor Dave Schoeld

Minutes of the First Lutheran Church Annual Meeting Sunday, September 22, 2019

Opening: Tiff Lewis – Vice President

Devotions: Pastor Nyla Schoeld

Call to Order and Council Introductions

Tiff Lewis, Rick Ribstein, Dave Lenander, & Erik Dahl

Approval of Minutes from September 23, 2018 Annual Meeting

Motion by Terri Veen to approve (with 1 spelling correction) // 2nd by Brad Erickson

Motion approved by voice vote

Senior Pastor Dave Schoeld:

Present and explain written reports

Detail the roles filled by church staff – approximately 40 people

Discussed the “All IN” upcoming effort

Acceptance of written reports

Motion by Sally Damm to approve as presented // 2nd by Bob Bell

Motion approved by voice vote

Balance Sheet and 2020 FLC Budget Proposal discussion – Bob Bell

Mr. Bell detailed highlights from page 27 of Annual Report

Synod contribution

Habitat for Humanity

Cash position at FYE

Restricted and Designated account highlights

Fixed assets described as conservative in amount

Liabilities are zero

Next year budget has a deficient

Motion by Barb Jensen to approve as presented // 2nd by Lonnie Bayer

Motion approved by voice vote

Election to Council and Audit Committee:

Currently two open seats on Council. Nominating committee presented the name of Kris Seas.

From the floor the name of Barb Jensen was nominated.

One seat open on the Audit Committee. Name placed in nomination was Debbie Pederson

Motion by Stuie Lewis to approve as presented // 2nd by Curt Ness

Motion approved by voice vote

Resolution of Remembrance: Senior Pastor Dave Schoeld

Motion by Barb Telkamp // 2nd by Jane Rosvold

Motion approved by voice vote

Resolution to Amend the First Lutheran Constitution – Tiff Lewis

Motion by Randy Richards // 2nd by Mary Moeller

Motion approved by voice vote

Resolution to Sell the Blue House – 325 8th St. – Erik Dahl

Motion by Travis Theix // 2nd by Kathy DeKraai

Motion approved by voice vote

Motion to Close the Meeting

Motion by Dave Norby // 2nd by Pat Anderson

Motion approved by voice vote

Closing Devotions: Pastor Dave

Annual Report to the Congregation

Submitted by Pastor David J. Schoeld, Senior Pastor

*God is our refuge and strength, a very present help in trouble.
Therefore we will not fear, though the earth should change,
though the mountains shake in the heart of the sea;
though its waters roar and foam, though the mountains tremble with its tumult.
There is a river whose streams make glad the city of God,
the holy habitation of the Most High.
God is in the midst of the city; it shall not be moved;
God will help it when the morning dawns.
The nations are in an uproar, the kingdoms totter;
he utters his voice, the earth melts.
The LORD of hosts is with us; the God of Jacob is our refuge.
- Psalm 46:1-7*

This is a year that we will remember. Around us we have witnessed much that we'd prefer to forget, or imagine never happened, but we will forever be shaped by what we have seen, heard, and said. In some ways, we have allowed ourselves to be moved along by forces that have harmed us more than that which offers hope or healing. Where has God been in the conversation?

I've watched "the world" rise up in response – holding vitriol and anger, hatred and separation, as solutions to the woes around us. Distancing has been the word of the year, and rather than giving us hope, it has allowed our brokenness to guide us. We have succumbed all too often to political ideology over faithful response, to personal feelings over communal responsibility, to justification over repentance. Where has faith been in the conversation?

We exist as a community of faith to remember that the world cannot hold sway over a promise that is ours, that the fears of the world will always arise (as they always have) to attempt to move us away from connection into resignation. Read Psalm 46 (above) again – *God is our refuge* – should the earth rage, the nations totter, the seas roar, or the mountains shake, God is with us.

What does that mean for our work together? It means WE have work to do.
WE need to bear witness to a God who is greater than the fears around us.
WE need to bear witness to a love that is greater than visible worth.
WE need to bear witness to an abundance that is greater than our fear for tomorrow.
WE need to bear witness to a call to use our hands and feet to make God known.
WE need to bear witness to the promise that that kingdom of God is always at hand.

The work of the church, of the community of faith that calls First Lutheran home, has not been still in this strange time. We have worshipped together with larger numbers, scattered across the globe in new ways; we have helped many who struggled financially in the wake of job loss and changes; we have reached out in calls and letters to remain connected with those who are most vulnerable; we have welcomed new brothers and sisters into our family through the waters of baptism; we have united couples in the bonds of marriage; we have commended beloved family and friends to the care of God's grace; we have moved forward with hiring a youth person to help our middle and high school youth examine the world in faith; we have put our hands to work in building a home; we have been active...

But our work needs to expand and grow. Last Spring, as Pastor Steve was beginning his new call with Ascension, our church council and pastors looked forward, making decisions about how we will walk this new path. Though this plan was delayed out of the need to care for our neighbors, it is still where we are going.

The church exists as the body of people who call First Lutheran their faith home. The church is at work through each and every person who claim connection to First Lutheran.

The church will become more and more vital as we engage and invite each member to action.

To accomplish this, we will create ministry and resource teams to actively engage in the work of God for our community. You will be given the opportunity to live out your faith through ministries of the congregation – connecting with opportunities to be faithful in whatever moments present themselves, engaging people whose hearts and minds are engaged and passionate.

The voice of the church is not to mirror society or politics, but to engage the world by and through God's gift of grace. As the world shakes and roars, the church will continue to rest and work in the refuge of God.

Annual Report to the Congregation

Submitted by Associate Pastor Nyla Schoeld

"We must become good plowmen. Hope is the prerequisite of plowing. What sort of farmer plows the furrow in the autumn but has no hope for the spring? So, too, we accomplish nothing without hope, without a sure inner hope that a new age is about to dawn. Hope is strength. The energy in the world is equal to the hope in it. And even if only a few people share such hope, a power is created which nothing can hold down – it inevitably spreads to others." - Albert Schweitzer

From Despair to Hope

George S. Johnson asks in his book, Beyond Guilt, "How do you keep going when everything seems hopeless? Where do you find courage, energy, or motivation to hang in there when you have every reason to quit? What can you do about feelings of fear, apathy, despair and cynicism especially when it seems that you are all alone in the struggle? These are questions asked not only by those who are experiencing death and destruction firsthand. " They are questions many of us ask.

This year we have encountered a new reality that can easily lead us to feeling disparaged. We are now learning to live with a pandemic, and learn to live during this time with grace for those around us. The earth is in tumult, more devastating floods, hurricanes, fires, earthquakes and more people seeking refuge, work, peace, and hope. If ever there was a time that leads us to question how to keep going in life, not to mention in the church, it is a time such as this.

Johnson continues,

“Hope is found in the willingness to embrace pain and to express it.
Hope is willing to act before all the evidence is in, not being afraid to risk.
Hope is rooted in community and grows as we are present to one another.
Hope is balancing a sense of urgency with humor and playfulness.
Hope is remembering that God is in charge and we are not the Messiah.
Hope is found in remaining close to nature and celebrating God’s creation.
Hope is nurtured through music and the arts.

Hope emerges out of the ashes of our dreams because God brings life out of death.”

As we move into a new year, we move forward in HOPE. We move forward recognizing that although we don’t know where God is leading us, God is walking along side of us, holding us, and guiding us. We can move forward excited about learning and testing new ways of doing ministry.

All of our children's and youth ministry will look and feel different this year, but we are hopeful that this will be an opportunity for parents to engage in conversations about faith with their children. Mission trips and Youth trips will be postponed, but we are hopeful that we can create new mission activities or ventures locally. We will continue to offer Zoom Bible Studies and opportunities for connection. We are hopeful that as we learn how to do things differently, God bring good out of what seems like a difficult time.

I invite you to share your ideas for new ways of ministry that we haven't thought of yet. Share your imagination with us as we look towards the future with hope! We are a people born out of faith and perseverance, so let us persevere in the hope of new life that has been gifted to us in Jesus Christ our Lord.

"Blessed be the God and Father of our Lord Jesus Christ! By his great mercy we have been born anew to a living hope through the resurrection of Jesus Christ from the dead." 1 Peter 1:3

May God bless you and keep you, may God's face shine on you with grace and mercy, may God's love hold you when you aren't strong, and may God hold your hand and lead you forward in hope!

In Christ's Service,
Pastor Nyla Schoeld

Annual Report to the Congregation

First Lutheran Church Children's Ministry

Submitted by Kari York, Faith Formations Director

When looking back at the 2020 year of Children's Programming I find myself counting blessings. Programming began with an exciting rally day on September 22, 2019, which was combined with the annual meeting for the church. This event offered an opportunity for all the missions, groups, and programs offered through the church to be showcased through posters, pamphlets, and personal narratives. It was a wonderful opportunity for all generations of the church to learn how to serve and be served by First Lutheran Church. There was a large jump house for the little children with supervision provided by our older students. After the meeting, a meal was provided with more time to discover people and programs of the church.

The Journey to Discipleship program continued to be offered on Wednesday evenings and Sunday Mornings. We had 137 students registered, 97 students for Wednesday and 40 students for Sunday. Sunday classes held strong at around 30-35 in attendance. Our Wednesday numbers were down due to last years large 5th grade class moving on to Confirmation. The three largest classes this year were 2nd Grade, 4th grade, and Kindergarten with 3rd, 5th, and 1st following close behind. 9 of the 14 Wednesday classes had two adult leaders and some included an assistant with the two adults. The remainder of the classes had an adult leader with a Middle-Highschool age assistant. We increased our number of activity leaders this year. We also added a position of Hall Monitor to help secure a safer environment for students as well as assist activity leaders. The Hall monitor was such a success that we hope to find 2 Hall monitors once we are all together again.



The theme for the year was “*God keeps his promises*” The programming revolved around the stories of Abraham and Sarah, Noah, Jonah, Daniel and the Walk to Emmaus. We made a few adjustments to the structure of our programs this year. We continued to have a Pastor present the lesson in a more in-depth manner to all the 4th & 5th graders on the first evening of a new story. This was successful in providing more understanding, engagement with the story as well as create more meaningful relationships with the Pastors. Everyone started the evening with a worship and music together. We were blessed to have the FLC quilters help us with several activities, some of our older generation joined us for a few rotations, as well as a couple of guest engineers. We hope that more congregants will join us for activities in the future, it was such an eye opening and bonding experience for all.

Dave Law, Maci Law and Jenna York continued to facilitate the music portion of our program this year. This was Maci’s last year with us as she moves on to Minnesota for college. She has been a true blessing to our program.

We held a Halloween Event for families put on by our confirmation and youth group students. It was a HUGE success and so much fun. There were games, pictures, crafts, prizes and so much more. Families were thrilled to have a safe, warm, fun option for Halloween. Our older students did a fabulous job putting on the event.





Pat Anderson worked with me to create the Christmas program this year Pat, accompanied by Amy Lease and assisted by Jenna York were amazing with the musical portion of this year's Christmas program. A wonderful group of volunteers worked hard so to ensure the program would go smoothly. It was once again, a wonderful way to start the Season of Advent.

When we were forced to close due to COVID-19 Journey to Discipleship had two sessions left for the year. The blessing was we did not miss out on much of our programming. We were able to offer programming in the form of Jenna and myself creating some music videos as well as a few lesson videos. We also used several pre-recorded lessons by theologically aligned publishers. I sent handwritten notes to all students and volunteers, hand delivered some Bibles to families and provided other resources.

VBS was offered during the regularly scheduled dates in July. We offered an opportunity for 2 parking lot gatherings which were also live streamed, 2 zoom sessions, kits full of supplies to complete various activities as well as a private Facebook page for families to connect. We gave out 60 supply kits, however the pictures and correspondence with families showed siblings of all ages engaging in the activities alongside the entire family.

We had Grandparents, daycare friends, and entire families engaging in the VBS option which allowed flexibility to work on activities when it was best for them.



There were a few changes to our Youth and Family team this year, current members are: Kari York, Nyla Schoeld, Julie Bell, Mary Moeller, Pam Collins, Allison Ness, Tiffany Lewis, Aimee Deckert, Monica Haar, and Travis Thiex. Anyone interested in joining our Youth and Family team is encouraged to contact Kari York.

Bible steppingstones class with the 3rd graders and the Communion steppingstone with our 5th graders were held in the Fall. The 1 year, 2 year and Kindergarten steppingstones were cancelled due to the pandemic.

Moving forward with programing planning for the 2020-2021 year we will not be holding our Journey to Discipleship for preschool through 5th grade students in person this year. We hope to have an outdoor option at some point, for now we are planning on creating a variety show of sorts. The theme for the show (or our season) will be prayer. We are looking to provide a live portion along with prerecorded segments that provide Faith Formations for the whole family. We need families to enroll their students to ensure accurate contact information, allow for special items to be sent the the children, assist with future class formations, for Birthdates and much more. We hope that the congregation as a whole will find the show engaging and informative.

All large family events and gatherings have been placed on hold at this time. We will be reassessing the delivery model of our Steppingstones classes as well.

I will continue to utilize the church bulletin, website, FB, the church app (notification of Faith Formations), and email to inform families, students, and the FLC community of any updates on children's programming.

Rally Day, Journey to Discipleship, Halloween event, steppingstones classes and VBS were so much fun. We were blessed with some new volunteers and families. I feel so blessed to be surrounded by community of people at First Lutheran Church here in Brookings, South Dakota. I miss interacting with everyone. I look forward to working with everyone in any way it is possible over this next year.

Annual Report to the Congregation

First Lutheran Church Music Ministries

Submitted by Pat Anderson

“My life flows on in endless song, above earth’s lamentation; I hear the clear though faroff hymn that hails a new creation. Through all the tumult and the strife, I hear the music ringing; It finds an echo in my soul, How can I keep from singing?”

by Robert Lowry

As a musician, this song fills me with joy and hope, even in these uncertain times, when the choir is not singing and the congregation is participating in worship virtually.

This past year brought many joys and challenges. The sanctuary choir met every Wednesday night and provided special music for three Sundays out of four. Additionally, the hand bell choir provided prelude or Communion music, at least once a month. Brass ensembles and woodwind players enhanced our music many Sundays. This year the hand bell choir and sanctuary choir featured the musical skills of many of our college students and high school seniors. Dr. Mary Ermel continues to bless us with her organ music, which comes through the on-line services so well.

When the church was “deployed”, as Pastor Dave says, and in-person services stopped, the sanctuary and hand bell choirs no longer met for rehearsals or leading worship. It was difficult not to have closure.

However, when I began finding individuals willing to share their music gifts on-line, I was and, continue to be, very thankful.

During this COVID 19 event, we said goodbye to Mike, Susan, Tom and Kate Ropp. The family moved to New Mexico in July, where Tom and Kate are attending college and Mike and Susan are pursuing business interests. Their presence will be missed in so many ways! We do wish them Godspeed and know some other congregations will be blessed by their talents.

Resuming hand bell and sanctuary choirs will not be happening soon. However, the rich gifts of music, provided by volunteers, will continue.

How can I keep from singing?

Pat Anderson,
Worship Coordinator 8:30 service

First Lutheran Cemetery Ministry Team Annual Report to the Congregation

Submitted by Brad Erickson, Kelly Johnson, Nicki Brooks, Ken Nelson
and Pastor David Schoeld

The First Lutheran Cemetery Committee members are Nicki Brooks, Brad Erickson, Kelly Johnson, Ken Nelson, and Pastor Dave Schoeld. Brad Erickson is chair of this committee. We contract with Dan Billet, Dakota Cemetery Services, to serve as sexton.



New landscaping plants surround the sculpture on the western part of the cemetery. Thanks to Nicki for getting volunteers to water these plants during the heat of the summer.

First Lutheran Cemetery is open for burials of non-members as well as members. In order to make the community feel more welcome, the cemetery committee has proposed the name “First Lutheran Community Cemetery” for signage and promotional purposes. The official name of the cemetery would remain First Lutheran Cemetery.

Due to the Covid-19 pandemic, the committee hasn’t met, with the exception of the spring clean-up at the cemetery. We still have items on the table from the 2019 report, to include: new signage along with replacement of the entrance pillars. Another project for consideration is a directory and small enclosure for the cemetery.

The cemetery requires much annual maintenance to provide perpetual care. Contributions and memorials to the cemetery fund are welcome for maintenance as well as continued improvements. In addition to First Lutheran Cemetery, the congregation provides lawn care maintenance at Pioneer Cemetery and Sterling Lutheran Cemetery.

Regular maintenance has made spring and fall cleanups much easier for our volunteers. We are thankful that a nice crew shows up for the cleanups. **Fall cleanup is scheduled for Tuesday, October 6, at 10 AM.** Volunteers are much appreciated and will meet at the cemetery. In case of inclement weather the cleanup will be the following Tuesday (October 13).

As per cemetery rules, artificial flowers, decorations, and plants in pots are allowed only on the monument, end base of monument, or foundation from May 1 to October 1. During cleanup, we will be discarding these items, so if you have concerns, please come out before our October 6 cleanup and remove the listed items.

Stay safe, stay healthy!

First Lutheran Activity Center and MCH Annual Report to the Congregation

Submitted by Diane Almos, Welcome Desk and Activity Coordinator

Like everyone and everywhere else, 2020 has been a very different year at the First Lutheran Activity Center. Since mid March, all activities have been cancelled due to Covid 19. I can't begin to tell you how I miss the liveliness and the energy of the people we served and had contact with every day! I miss the schedule of the regular meetings that took place every week and the people who always had a smile and friendly greeting! I know that the time will come when we regroup and move ahead. I look forward to those days and scheduling activities again. Until then, stay safe!

First Lutheran Preschool Annual Report to the Congregation Submitted by SueAnn Mouw, Director

First Lutheran Preschool is beginning its thirty-seventh year of operation and I am starting my twenty-third year as the director.

The experienced staff at First Lutheran Preschool takes pride in being prepared for almost anything pertaining to the education of young children. However, nothing could have prepared us for the Spring of 2020. The global pandemic hit in mid-March and our preschool was closed. The staff was continually making new plans as hope remained that schools could reopen. When we realized that was probably not going to happen, we made other plans. The staff made available bi-weekly educational packets to all the students. This gave them the opportunity to finish the “Themes of the Week” curriculum centered around the letters that had not been covered. The packets included art projects, writing activities, songs, and many other educational suggestions for parents, along with an instructional newsletter.

In May we planned an outdoor “drive through” graduation and last day celebration. The students, their families and the FLP staff had an opportunity to see each other one last time and to say goodbye. The students received their graduation hats, diplomas, and gifts from their teachers.

This coming year will bring many more new challenges as we follow the CDC guidelines for COVID 19 and we add another class choice to our program. We are now offering an all-day program for children ages 4,5, and 6.

Our numbers are currently:

M/W/F	Mornings - 38 students	Afternoons - 35 students
T/TH	Mornings - 30 students	Afternoons - 33 students

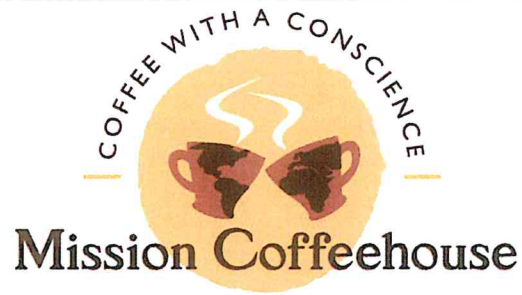
The staff and I truly appreciate First Lutheran Church’s continued support.

Respectfully submitted,
SueAnn Mouw, Director



Mission Coffeehouse Annual Report to the Congregation

Submitted by Jeanne Eclov, MCH Manager



Happy 14th Anniversary Mission Coffeehouse!!!

This 6th year has been a very unusual one for me as manager and for everyone that is employed and volunteer here. At the beginning, we had an usually busy schedule. We prepared for our daily routine and planned extra events as they arose. Our patrons' love for this beautiful, service based facility has increased again this year. They want to plan extra gatherings for their friends and their committee meetings. We all work hard to accommodate and satisfy everyone's expectations.

Our year was moving along as planned with normal activities such as: Wednesday night activities and meals, Meeting Room scheduled activities, and Activity Center scheduled activities. The fall fund raising activities and Christmas Dinner were very successful. The next big event I planned for is Easter and the Lenten Lunches. I had all the food ordered and two lunches successfully served when we were stopped in our tracks with COVID-19.

The Mission Coffeehouse will remain closed for the time being.

- a. Our primary mission is to provide a safe space to gather for coffee, food, and conversation, and with the nature of the virus, that is not something we can offer.
- b. We are not offering take-out-only options at this time because there are coffee shops/ small businesses in town that need your patronage to survive, and we can wait.

Mission Coffeehouse was the busiest it had ever been and I wholeheartedly believe we will return to that status again.

Thank you to Kool Beans for their continued commitment to buying and custom roasting fair trade coffee beans for us and thank you for your excellent service.

Thank you to the volunteers, staff, and First Lutheran Church for all your love and support. Together, we will overcome this setback and we believe that God is in control and has a plan.

During September 2019 and through part of March 2020, the Mission Coffeehouse was proud to share the extreme generosity of our patrons' donations through the ministry/mission tip jar which are directed to local or global missions selected by the Mission Board:

September 2019	Crisis Rescue International	\$1,458.40
October 2019	Brookings Special Olympics	\$1,511.45
November 2019	St. Teresa Orphans Foundation	\$1,414.46
December 2019	Good Gifts	\$2,172.88
January 2020	Volunteer Service Bank	\$1,332.52
February 2020	Jacks Closet & Cupboard	\$1,069.03
March 2020	Lutheran Disaster Response	\$ 644.82

THE BROOKINGS COUNTY FOOD PANTRY

The Mission Board from the Mission Coffeehouse and friends from the church and community organized a food drive for the Brookings County Food Pantry on May 2. With the cooperation of Dick Peterson from Cinema 8, people could drive through the parking lot and drop off food or monetary contributions (and then buy some great movie popcorn from the Cinema!) Donors dropped off 22 boxes of food and over \$298.00 for the food pantry.

And the king will answer them,
'Truly I tell you, just as you did it to
one of the least of these who are
members of my family, you did it to me.'

First Lutheran Church Women (FLCW)

Annual Report to the Congregation

Submitted by Barb Ahartz, FLCW President

"As a Community of Women created in the image of God called to discipleship in Jesus Christ, and empowered by the Holy Spirit, we commit ourselves to grow in faith, affirm our gifts, support one another in our callings, engage in ministry and action, and promote healing and wholeness in the church, the society and the world."

The First Lutheran Church Women began our Bible Study this year with Pastor Nyla Schoeld picking a book of the Bible and a good discussion always follows. The Bible Studies are usually held on the third Monday of the month at 2:00 pm in the church parlor. We invite all women of the congregation to join us for fellowship and Bible Study.

Our Mission Community focus has been The Brookings Food Pantry collection and delivery. Our congregation average donation has been between 75 - 200 items each month. We thank all who help with this mission. We also send baptism birthday cards to remember the baptismal date of those baptized at First Lutheran. We also distribute handmade prayer pockets to First Lutheran Church and the community.

The Mission Action Committee, with the help of the congregation, collected 87 personal care kits. In October these Lutheran World Relief Kits were packed and sent on a truck to Minneapolis to be distributed where needed. We thank the congregation for contributing items for Relief Projects.

The Mission Growth Committee plans outings for anyone interested and works with the Bible Study part of our group.

Several members traveled to Badger on Sept. 17th for the Medary Conference Fall Retreat. A Bible Study was presented, songs were sung and a silent auction raised money for mission and ministry.

The Thankoffering collected in October totaled \$1,557.00 This offering was sent to the churchwide Women of the ELCA organization for expenses, mission and ministry.

This year the Medary Conference Spring Gathering was to be held at St. John's Lutheran in Clear Lake but was called because of Covid-19.

The Funeral Committee has been busy through the year and we appreciate the help we have received when asking for workers and for providing cakes.

We provided monetary support to the following groups: the University Lutheran Center, the Volunteer Service Bank, the Domestic Abuse Shelter, St. Dymas, and First Lutheran Church. First Lutheran Church Women serve as mission quilters, attend Church Women United gatherings and Golden Age.

Mission Interest Quilters

Annual Report to the Congregation

November 1, 2019 – Present 2020

The First Lutheran church Mission Interest Quilters made and distributed more than 350 quilts with help from our First Lutheran members and friends. The quilts were distributed to the following agencies locally and world-wide:

Lutheran World Relief – 200 quilts	International Student Office – 3 quilts
Donations to area families – 6 quilts	FLC Graduating Seniors – 31 quilts
Sleep in Heavenly Peace – 17 quilts	County Sheriff's office – 12 quilts/blanket
Quilts sold – 24 quilts	Veteran's Hospital – 13 lap robes
DOC donation – 6 quilts	Stoney Brook – 45 lap robes

Over 200 masks were sewn during the summer of 2020 for the following groups:
VBS students – 60, Indian Health Services – 25, Bienvenidos – 89, Stoney Brook – 50
Lap robes were created and donated for members of Stoney Brook Assisted Living that were distributed for Grandparents Day in mid-September.

The Mission Quilters received monetary donations, memorials, personal gifts, and proceeds from the sale of quilts in the amount of \$ 1,689.00 to cover expenses for all quilting supplies. Approximately \$1,000 was also donated through gift cards from Thrivent Action Team Projects during the year. Expenses for the year were \$ 1,223.16. Additional expenses of \$450.00 will include shipping costs for sending the mission quilts overseas in October of this year.

In September mission quilts were blessed in preparation for sending the 200 quilts to Lutheran World Relief to mission locations overseas. The Mission Quilters also made a donation to the Belize Mission project to support a scholarship for school tuition, supplies and transportation.

During the past year, the Mission Quilters also participated in working with the Journey to Discipleship and Confirmation programs. The quilters helped the youth to make Pet Pillows that were later distributed to the Humane Society. Two groups of SDSU nursing students also visited the quilting members during the year as part of a life-long health lesson in the nursing program. The university students interviewed the quilters and participated in some hand-on quilting techniques. Their visits were learning experiences for all involved.

An additional project this year for the Mission Quilters was to support the Synod Day to be held in November that will recognize ordination for women into the clergy of the ELCA. A pastor's stole has been designed to include symbolisms related to First Lutheran Church.

News of the loss of 57,000 relief items, valued at \$600,000, reached FLC Women and Quilting groups in August, following the Beirut warehouse explosion. These items, such as 22,000 handmade quilts and kits with baby and health supplies, were in Lutheran World Relief containers at the port of Beirut, on their way to families hit hard by the increasingly dire economic situation in Lebanon – including refugee families who fled conflict in Syria. Along with the loss of life and other property, we grieve for this lost opportunity to respond compassionately to the needs of so many families. For more details on the incident, go to <https://lwr.org/>. Yet - God is faithful and so are we! Instead of compiling Kits this fall, FLC Women seek cash donations to help replace the loss. Contributions can be made directly to LWR or along with your gift to FLC. Please mark your contribution clearly. Quilters will also be working to increase their usual number of quilts before the October shipment date. We are thankful for our ability to share God's generous love.

There are presently two quilting groups working through First Lutheran Church. One group meets on Tuesday mornings and the “Sew What” group meets on Monday evenings throughout the year. The Mission Quilters welcome new members at any time to either quilting group – no matter what the skill level or past sewing experience is! The group is also looking for volunteers to help cut fabric squares, assemble and tie quilts, bind or hem quilts, enjoy the fellowship, and support the mission outreach program of First Lutheran Church.





First Lutheran Church Foundation Annual Report to the Congregation

The *FLC Foundation* allows the management of the Church's long-term assets to be separated from the day-to-day management of the Church. This ensures the demands of the present do not cause the opportunities of the future to be neglected.

The Foundation currently has Endowment Funds designated in support of:
Youth, Cemetery, Preschool, Scholarships, Seminary Scholarships and Sabbatical

The Endowment Funds are invested in the ELCA Pooled Trust and managed by the ELCA Endowment fund to provide perpetual support to each of their designated areas. All gifts to the FLC Foundation are invested with only the earnings being used each year. If you are interested in supporting these programs in a perpetual way, we encourage you to contact any of the Foundation Board members.

Despite unprecedented economic challenges, investment performance has been positive with the ELCA Pooled Trust posting the following annual returns as of June 30, 2020:

1 year = 1.54%

3 years = 4.22%

5 years = 4.53%

7 years = 6.02%

Performance figures were obtained from the ELCA Endowment Fund Pooled Trust second quarter 2019 report. Past performance does not guarantee future results.

On 7/1/2019 the Foundation had total assets of \$1,493,741. For the twelve months ending 6/30/2020, the Foundation received contributions totaling \$17,656 and made distributions totaling \$72,131 (see detail) The Foundation ended the most recent calendar quarter on June 30th, 2019 with total assets of \$1,473,594.

Details of the distributions made during the last fiscal year are as follows:

\$10,363 was distributed in support of the FLC Cemetery

\$14,123 was distributed to our youth through the FLC Scholarship Fund

\$8,844 was distributed in support of the FLC Youth program

\$14,914 was distributed via the Seminary Scholarship fund

\$1,755 was distributed via the Preschool fund

\$1,813 was distributed via the Sabbatical fund

\$20,319 was distributed via the Undesignated fund

These distributions are only possible because of the generous support received from the many people who care deeply about the ministries of First Lutheran.

If you have any questions about the FLC Foundation or would like to make a gift that will have a perpetual impact on the ministries of First Lutheran you can contact Pastor Dave Schoeld or the Church Office.

FLC Foundation

Balance Sheet
As of June 30, 2020

	Jun 30, 20	Jun 30, 19	\$ Change	% Change
ASSETS				
Current Assets				
Checking/Savings	39,848.02	23,456.25	16,391.77	69.9%
FB&T #xxx7293	39,848.02	23,456.25	16,391.77	69.9%
Total Checking/Savings	39,848.02	23,456.25	16,391.77	69.9%
Total Current Assets	39,848.02	23,456.25	16,391.77	69.9%
Other Assets				
Undesignated Endowment Fund	388,088.98	403,540.22	-15,451.24	-3.8%
Cemetery Endowment Fund	200,872.10	208,060.72	-7,188.62	-3.5%
Scholarship Endowment Fund	268,213.28	277,976.25	-9,762.97	-3.5%
Preschool Endowment Fund	34,832.04	35,153.40	-321.36	-0.9%
Seminary Scholarship Endowment	340,196.48	335,881.31	4,315.17	1.3%
Sabbatical Endowment	34,277.58	35,660.75	-1,383.17	-3.9%
Youth Leadership Development Fd	167,265.09	174,011.61	-6,746.52	-3.9%
Total Other Assets	1,433,745.55	1,470,284.26	-36,538.71	-2.5%
TOTAL ASSETS	1,473,593.57	1,493,740.51	-20,146.94	-1.4%
LIABILITIES & EQUITY				
Liabilities				
Current Liabilities				
Other Current Liabilities	18,175.64	100.00	18,075.64	18,075.6%
Due to Endowment Funds	18,175.64	100.00	18,075.64	18,075.6%
Total Other Current Liabilities	18,175.64	100.00	18,075.64	18,075.6%
Total Current Liabilities	18,175.64	100.00	18,075.64	18,075.6%
Total Liabilities	18,175.64	100.00	18,075.64	18,075.6%
Equity				
Permanently restrict net assets				
Endowment Funds Net Assets				
Endowment Funds Opening Balance	430,084.07	430,084.07	0.00	0.0%
Endowment Funds Contributions	726,415.04	708,758.67	17,656.37	2.5%
Endowment Funds Distributions	-614,141.00	-542,010.00	-72,131.00	-13.3%
Investment Gain (Loss)	321,753.64	360,863.88	-39,110.24	-10.8%
Reinvested Dividends & Interest	569,730.21	512,647.97	57,082.24	11.1%
Total Endowment Funds Net Assets	1,433,841.96	1,470,344.59	-36,502.63	-2.5%
CGI Grant Net Assets				
CGI Grant from Thrivent	50,000.00	50,000.00	0.00	0.0%
CGI Grant Distributions	-28,733.42	-27,023.42	-1,710.00	-6.3%

FLC Foundation

Balance Sheet
As of June 30, 2020

	Jun 30, 20	Jun 30, 19	\$ Change	% Change
Total CGI Grant Net Assets	21,266.58	22,976.58	-1,710.00	-7.4%
Total Permanently restrict net assets	1,455,108.54	1,493,321.17	-38,212.63	-2.6%
Unrestrict (retained earnings)	309.39	319.34	-9.95	-3.1%
Total Equity	1,455,417.93	1,493,640.51	-38,222.58	-2.6%
TOTAL LIABILITIES & EQUITY	1,473,593.57	1,493,740.51	-20,146.94	-1.4%

First Lutheran Mission and Ministry Outreach-FY 2020

South Dakota Synod/ELCA:		\$78,629.31
Mission Support	\$78,629.31	
Congregational Ministry Outreach:		\$71,814.16
My Neighbor	\$5,728.47	
Stoney Brook Assisted Living	\$187.14	
St. John Lutheran in Madison	\$5,209.76	
Domestic Abuse Shelter	\$1,642.00	
Assistance to Individuals	\$3,012.21	
Food Pantry	\$1,904.82	
Feeding Brookings	\$103.79	
Face of Grace projects	\$212.38	
Youth & Family/Journey	\$3,528.63	
Christian Ed. Family Event	\$1,819.28	
Middle School Ministry	\$6,495.16	
Adult Ministry	\$1,185.16	
Christmas Mission Market	\$4,418.66	
Sunday Radio	\$3,060.00	
Childcare	\$1,484.28	
Sunday donuts-MCH	\$154.98	
Adult Fellowship	\$829.84	
Golden Age	\$478.14	
Young Adult Ministry	\$133.50	
Christ In Our Home/Devotionals	\$1,520.83	
Volunteer Recognition	\$621.26	
Women's Retreat	\$4,704.60	
Christmas Dinner/serving equip.	\$766.56	
Mission Outreach	\$1,000.00	
Hospital Flowers	\$91.57	
Belize Adult Mission	\$8,631.33	
Confirmation	\$756.41	
High School Ministry	\$796.94	
Vacation Bible School	\$1,473.67	
Annual Meeting(food)	\$1,505.00	
Brookings Ministerial Ass'n.	\$43.00	
Family Back2School	\$20.00	
In memory of Molu	\$7,287.03	
Lenten outreach	\$1,007.76	
Scholarships:		\$49,255.00
Postsecondary	\$14,100.00	
Choir	\$1065.00	
Belize students	\$6,150.00	
Seminary	\$27,940.00	

MCH Tip Jar:		\$9,797.86
Brookings Backpack Project	\$839.12	
Special Olympics Brookings	\$1,511.45	
St. Teresa Orphan Foundation	\$1,414.46	
Crisis Recue Int'l.	\$1,458.40	
ELCA Good Gifts	\$2,172.88	
Volunteer Service Bank	\$1,332.52	
Jack's Cupboard	\$1,069.03	

Golden Age donations:		\$155.00
Volunteer Service Bank	\$75.00	
Hope Haven	\$80.00	

GRAND TOTAL
\$209,651.33

"Foundations" Capital Campaign

Goal: \$750,000
 Received in FY 2020: \$4,867.00
 Grand Total Received in 6 years: \$619,677.91
 Balance on hand: \$56,482.16

**FIRST LUTHERAN CHURCH
BALANCE SHEET
August 31, 2020**

		ASSETS
CASH		
Unrestricted	\$132,391.51	
Restricted/Dedicated	\$939,312.38	
Total Cash		<u>\$1,071,703.89</u>
 FIXED ASSETS		
MiniVan	\$11,000	
First Lutheran Church	\$3,500,000	
New Addition	\$3,520,000	
403 8 th St.	\$160,000	
Undeveloped Property	<u>\$45,000</u>	
Total Fixed Assets		<u>\$7,236,000.00</u>
 TOTAL ASSETS		 <u>\$8,307,703.89</u>

LIABILITIES & EQUITY

LIABILITIES		
Short-Term*		
Total Short-Term Liabilities		<u>\$00000*</u>
Long-Term		
Total Long-Term Liabilities		<u>\$00000</u>
Total Liabilities		<u>\$00000</u>

NET ASSETS		
Unrestricted	\$132,391.51	
Restricted/Dedicated	\$939,312.38	
Investment in Fixed Assets	\$7,236,000.00	
Total Net Assets		<u>\$8,307,703.89</u>

TOTAL LIABILITIES AND EQUITY	<u>\$8,307,703.89</u>
-------------------------------------	-----------------------

* the amount of the PPP loan is \$109,700.00 and may be forgiven

9/5/2020
11:00a

First Lutheran Church
Dedicated Accounts
August, Fiscal Year 2020
Fund 01 - General Fund

Account	Beginning Balance	Current Month		Year-To-Date		Current Balance
		Receipts	Expenses	Receipts	Expenses	
Major 40 - DESIGNATED GIFTS						
Minor 10 - Designated Gifts						
017-40-10-00 Des/Domestic Abuse	0.00	0.00	0.00	25.00	25.00	0.00
017-40-10-01 Des/Mission Outreach	4,090.00	0.00	0.00	300.00	1,000.00	3,390.00
017-40-10-02 DES/UNDESIGNATED	33,603.06	0.00	56,768.30	680,115.42	66,116.72	647,601.76
017-40-10-03 Des/Adult Ed	602.99	0.00	0.00	90.00	2,722.60	-2,029.61
017-40-10-04 Des/Building Maintenance	873.00	0.00	0.00	0.00	0.00	873.00
017-40-10-05 DES/World Hunger	0.00	0.00	0.00	0.00	0.00	0.00
017-40-10-06 Des/Food Pantry	0.00	0.00	0.00	1,904.82	1,904.82	0.00
017-40-10-07 Des/Golden Age	279.72	0.00	0.00	268.00	258.20	289.52
017-40-10-09 Des/SR. PASTOR'S DISCRET	177.25	0.00	171.30	2,300.00	730.47	1,746.78
017-40-10-13 Des/Hospitality Ministry	0.00	0.00	0.00	0.00	0.00	0.00
017-40-10-14 Des/Schol,baptism Envelop	10,305.83	250.00	0.00	3,189.89	0.00	13,495.72
017-40-10-15 Des/Other	735.58	0.00	0.00	2,280.00	1,500.00	1,515.58
017-40-10-16 Des/Cameroon Trip 2012	100.00	0.00	0.00	0.00	0.00	100.00
017-40-10-17 DES/Worship Praise	125.00	0.00	0.00	0.00	0.00	125.00
017-40-10-18 Des/Confirmation Funds	20.00	0.00	0.00	2.00	0.00	22.00
017-40-10-19 Des/Cemetery	38,423.95	0.00	384.26	24,092.00	10,845.71	51,670.24
017-40-10-20 Des/Memorial	8,977.08	620.00	0.00	1,800.00	6,965.08	3,812.00
017-40-10-21 Des/Mark J/Arusha/Global	0.00	0.00	0.00	0.00	0.00	0.00
017-40-10-22 Des/Christmas Meal	967.27	0.00	0.00	1,974.00	766.56	2,174.71
017-40-10-23 Des/Fishin' for Mission	0.00	0.00	0.00	0.00	0.00	0.00
017-40-10-24 Des/Balcony Chairs	580.00	0.00	0.00	0.00	0.00	580.00
017-40-10-27 Des/Belize Adult Mission	21,751.63	500.00	0.00	22,321.41	15,081.33	28,991.71
017-40-10-28 Des/Schol,for/to Schools	-2,886.00	0.00	0.00	15,873.00	14,100.00	-1,113.00
017-40-10-29 Des/Summer Youth Trip	0.00	0.00	0.00	0.00	0.00	0.00
017-40-10-30 Des/Wedding	0.00	0.00	0.00	0.00	0.00	0.00
Consultants						
017-40-10-32 Des/Mission Jamaica	0.00	0.00	0.00	0.00	0.00	0.00
017-40-10-33 PPP Loan	0.00	0.00	0.00	109,700.00	109,700.00	0.00
017-40-10-36 InMemory of Molu Zapeleh	0.00	595.16	6,987.03	14,843.14	7,287.03	7,556.11
017-40-10-38 Des/AIC CONCERT SERIES	3,473.09	0.00	0.00	0.00	0.00	3,473.09
017-40-10-41 Des/Funeral Food	0.00	0.00	0.00	0.00	0.00	0.00
017-40-10-42 Des/Heifer International	0.00	0.00	0.00	0.00	0.00	0.00
017-40-10-43 Des/PRESCHOOL	2,550.00	0.00	0.00	1,000.00	0.00	3,550.00
017-40-10-44 Des/BUS FUND	0.00	0.00	0.00	0.00	0.00	0.00
017-40-10-45 Des/YOUTH MISSION FUND	813.00	0.00	0.00	0.00	0.00	813.00
017-40-10-46 Des/ADOPTION FOUNDATION	0.00	0.00	0.00	0.00	0.00	0.00
017-40-10-47 Des/YOUTH & FAMILY HIREE	0.00	0.00	0.00	0.00	0.00	0.00
017-40-10-50 Des/Confirmation Retreat	0.00	0.00	0.00	0.00	0.00	0.00
017-40-10-51 Des/CONFIRMATION SUPPERS	0.00	0.00	0.00	0.00	0.00	0.00
017-40-10-54 Des/REFINISH PEWS	0.00	0.00	0.00	0.00	0.00	0.00
017-40-10-56 Des/CHRISTMAS MARKET	2,798.98	0.00	0.00	4,975.70	4,418.66	3,356.02
017-40-10-57 DES/Youth Minister	0.00	0.00	0.00	0.00	0.00	0.00
017-40-10-58 Des/HABITAT FOR HUMANITY	709.00	20.00	0.00	20.00	0.00	729.00
017-40-10-60 Des/FACE OF GRACE	0.00	0.00	0.00	191.00	212.38	-21.38
017-40-10-61 Des/TANZANIA MISSION TRIP	200.00	0.00	0.00	0.00	0.00	200.00

First Lutheran Church
Dedicated Accounts
August, Fiscal Year 2020
Fund 01 - General Fund

Account	Beginning Balance	Current Month		Year-To-Date		Current Balance
		Receipts	Expenses	Receipts	Expenses	
017-40-10-62 Des/FLC FOUNDATION	0.00	0.00	0.00	0.00	0.00	0.00
017-40-10-63 Des/VBS	912.00	0.00	0.00	0.00	0.00	912.00
017-40-10-67 Des/YOUTH SUMMER PROGRAMS	0.00	0.00	0.00	0.00	0.00	0.00
017-40-10-68 Des/OTHER YOUTH PROGRAMS	0.00	0.00	0.00	0.00	0.00	0.00
017-40-10-69 DES/NEW BLDG FURNISHINGS	0.00	0.00	0.00	0.00	0.00	0.00
017-40-10-70 DES/YOUTH ROOM	168.57	0.00	0.00	0.00	0.00	168.57
017-40-10-71 DES/NEW BLDG LANDSCAPING	0.00	0.00	0.00	0.00	0.00	0.00
017-40-10-72 DES/NEW BLDG SOUND SYS.	0.00	0.00	0.00	0.00	0.00	0.00
017-40-10-75 Des/ELCA Nat'l Youth Gath	1,884.62	0.00	0.00	0.00	0.00	1,884.62
017-40-10-76 Des/CONFIRMATION FUNDRAISE	0.00	0.00	0.00	0.00	0.00	0.00
017-40-10-78 Des/Organ Care	15,075.00	0.00	0.00	0.00	0.00	15,075.00
017-40-10-79 Des/Hand Bell Ministry	9,043.61	0.00	0.00	375.00	132.09	9,286.52
017-40-10-80 DES/ENDOWMENT FUND	0.00	0.00	0.00	0.00	0.00	0.00
017-40-10-81 Des/EINSPAHR PROPERTY	0.00	0.00	0.00	0.00	0.00	0.00
017-40-10-83 Des/Mission Partners	0.00	0.00	0.00	0.00	0.00	0.00
017-40-10-84 Des/AD.ED. CROSSWAY MATER	0.00	0.00	0.00	0.00	0.00	0.00
017-40-10-85 Des/INTERNSHIP PROGRAM	0.00	0.00	0.00	0.00	0.00	0.00
017-40-10-86 Des/LUTHERAN WORLD REL	0.00	0.00	0.00	0.00	0.00	0.00
017-40-10-87 Des/Puerto Rico	5,512.32	0.00	0.00	0.00	0.00	5,512.32
017-40-10-88 DES/BEFRIENDER MINISTRY	0.00	0.00	0.00	0.00	0.00	0.00
017-40-10-89 Des/Fdn'ts./Capital Campa	59,341.75	40.00	0.00	4,867.00	7,726.59	56,482.16
017-40-10-90 Des/Chancel Renovation'16	0.00	0.00	0.00	0.00	0.00	0.00
017-40-10-91 Des/Sabbatical Funding	6,543.92	0.00	0.00	1,815.00	0.00	8,358.92
017-40-10-92 Des/Semin Schol 4 Distrib	13,026.00	0.00	14,914.00	14,914.00	27,940.00	0.00
Totals	\$240,778.22	\$2,025.16	\$79,224.89	\$909,236.38	\$279,433.24	\$870,581.36

Major 40 - DESIGNATED GIFTS

Minor 32 - Stewardship Drive Funds

017-40-32-21 Des/Ministry To Veterans	39.73	0.00	0.00	1.00	0.00	40.73
Totals	\$39.73	\$0.00	\$0.00	\$1.00	\$0.00	\$40.73

Major 40 - DESIGNATED GIFTS

Minor 33 - Capital Improvement

017-40-33-01 HVAC	0.00	0.00	0.00	0.00	0.00	0.00
017-40-33-02 Church Roof	0.00	0.00	0.00	0.00	0.00	0.00
017-40-33-03 Parking Lot	0.00	0.00	0.00	0.00	0.00	0.00
017-40-33-04 Church Windows	0.00	0.00	0.00	0.00	0.00	0.00
017-40-33-05 Church Vehicle	0.00	0.00	0.00	0.00	0.00	0.00
017-40-33-06 Parsonage Siding	0.00	0.00	0.00	0.00	0.00	0.00
017-40-33-07 Parsonage Roof	0.00	0.00	0.00	0.00	0.00	0.00
017-40-33-08 Boiler	0.00	0.00	0.00	0.00	0.00	0.00
Totals	\$0.00	\$0.00	\$0.00	\$0.00	\$0.00	\$0.00

Major 40 - DESIGNATED GIFTS

Minor 99 - Designated Other Funds

9/5/2020
11:00a

First Lutheran Church
Dedicated Accounts
August, Fiscal Year 2020
Fund 01 - General Fund

Account	Beginning	Current Month		Year-To-Date		Current
	Balance	Receipts	Expenses	Receipts	Expenses	Balance
017-40-99-00 Des/Sanctuary Choir	0.00	0.00	0.00	0.00	0.00	0.00
Totals	\$0.00	\$0.00	\$0.00	\$0.00	\$0.00	\$0.00
Major 42 - CLEARING ACCOUNT						
Minor 32 - Minor 32						
017-42-32-03 Des/SR PASTOR PARSONAGE	0.00	0.00	0.00	0.00	0.00	0.00
017-42-32-05 Youth/Camp Scholarships	0.00	0.00	0.00	1,500.00	0.00	1,500.00
017-42-32-07 Des/Playground/Sports Eq	639.04	0.00	0.00	0.00	0.00	639.04
017-42-32-14 Des/Cash Reserve Fund	64,209.95	0.00	0.00	40.00	0.00	64,249.95
017-42-32-20 Des/Lilies/Poinsett Fund	0.00	0.00	0.00	902.00	902.00	0.00
017-42-32-21 Des/Men's Ministry	461.68	0.00	0.00	0.00	0.00	461.68
017-42-32-22 Des/Worship Traditional	1,085.00	0.00	0.00	0.00	0.00	1,085.00
017-42-32-23 Des/Peer Ministry	124.62	210.00	0.00	630.00	0.00	754.62
Totals	\$66,520.29	\$210.00	\$0.00	\$3,072.00	\$902.00	\$68,690.29
Fund 01 - General Fund	\$307,338.24	\$2,235.16	\$79,224.89	\$912,309.38	\$280,335.24	\$939,312.38

FLC 2019-20 BUDGET to ACTUALS and 2020-2021 PROPOSED

INCOME					
<u>Account Number</u>	<u>Account Name</u>	<u>19-'20 Budget</u>	<u>19-'20 Actual</u>	<u>20-'21 Budget</u>	
BUDGETARY INCOME					763,525.00
015-30-05-01	Envelope Offering	725,000.00	715,380.98	725,000.00	
015-30-05-02	Loose Offering	35,500.00	23,128.62	35,000.00	
015-30-05-04	Radio Broadcasts	2,275.00	1,400.00	2,275.00	
015-30-05-05	Interest/General Checking	600.00	674.40	600.00	
015-30-05-07	Lake Whitewood	19,980.00	9,655.00	0.00	
015-30-05-10	PPP Loan funds	0.00	109,700.00	0.00	
015-30-05-08	Thrivent Funds	650.00	972.00	650.00	
FACILITY USE					
015-30-06-06	Sugg. Fac. Use Gratuity	4,050.00	2,080.00	4,050.00	4,050.00
015-30-06-07	Rent - 325 8th St		0.00	0.00	
DESIGNATED					
015-31-06-02	Non-recurring gifts	0.00	210.00	0.00	
015-31-06-03	Youth & Family	21,800.00	12,700.09	11,500.00	
015-31-06-04	Wedding Fee Income	3,600.00	1,025.00	3,600.00	
015-31-06-07	Foundation Income	30,000.00	16,317.32	30,000.00	
015-31-06-09	Preschool Gifts	1,800.00	3,755.00	1,800.00	
015-31-06-10	Other Dedicated Receipts	12,000.00	13,961.20	12,000.00	
PRESCHOOL					130,900.00
015-32-00-01	Preschool Tuition	130,900.00	99,139.00	130,900.00	
COFFEEHOUSE					87,660.00
015-92-00-01	Coffee House	2,660.00	2,178.51	2,660.00	
015-92-00-02	MCH Tip Jar	15,000.00	10,803.56	15,000.00	
015-92-00-03	MCH Sales	73,500.00	47,585.31	70,000.00	
CEMETERY					
015-93-00-01	Cemetery Income	12,000.00	10,813.00	12,000.00	
TOTAL		1,091,315.00	1,081,478.99	1,057,035.00	
EXPENSE					
BENEVOLENCE/MISSION					30,400.00
016-50-42-02	SD Synod/ELCA	24,000.00	24,000.00	24,000.00	
016-50-42-19	Regional Charities	6,000.00	5,948.66	6,000.00	
016-50-42-32	Christmas/Annual Meeting	400.00	2,483.97	400.00	
016-50-42-35	BATA Transportation	0.00	0.00	0.00	
OFFICE SUPPLIES					30,000.00
016-55-42-07	Postage/Office	4,700.00	5,603.20	4,700.00	
016-55-42-08	Office Supplies	11,500.00	9,895.56	11,500.00	
016-55-42-09	Church Copier Expense	10,550.00	10,265.89	10,550.00	
016-55-42-22	Info Tech/Computer	3,000.00	3,195.00	3,000.00	
016-55-42-10	Bank Charges	250.00	186.23	250.00	
COMPENSATION					461,930.00
016-59-52-01	Pastors' Compensation	266,400.00	223,721.07	185,000.00	
016-59-52-02	Other Ministry Comp	92,000.00	90,634.97	130,560.00	
016-59-52-03	Support Staff Comp	142,800.00	139,086.83	146,370.00	
EXECUTIVE					9,250.00
016-60-52-60	Cont Education	5,000.00	4,836.79	6,000.00	
016-60-52-65	Childcare	2,400.00	1,484.28	2,400.00	
016-60-52-86	MCH - Food/Coffee	250.00	154.94	250.00	
016-60-52-87	Agency	600.00	1,100.15	600.00	
WORSHIP/MUSIC/ARTS					5,575.00
016-80-61-01	Music Copyrights	1,575.00	1,943.25	1,575.00	
016-80-61-02	Music/Music Ed	1,250.00	363.62	1,000.00	
016-80-61-05	Instrumentals/Artists	3,000.00	1,865.00	3,000.00	
016-80-61-09	Musical/Drama	800.00	0.00	0.00	
EDUCATIONAL MINISTRIES					19,305.00
016-81-73-02	Christian Ed/Children	4,900.00	3,587.28	4,900.00	
016-81-73-04	Christian Ed/Family Event	1,600.00	1,728.97	1,600.00	
016-81-73-05	Background Checks	400.00	227.91	400.00	
016-81-73-08	Christian Ed/High School	400.00	0.00	400.00	
016-81-73-10	Vacation Bible School	2,000.00	1,473.67	2,000.00	
016-81-73-11	Elementary Ministry	600.00	0.00	600.00	
016-81-73-13	Young Adult Ministry	200.00	133.50	200.00	
016-81-73-15	High School Ministry	1,200.00	796.94	4,200.00	
016-81-73-16	Christian Ed/Confirmation	2,125.00	634.04	2,125.00	
016-81-73-18	Middle School Ministry	480.00	835.82	480.00	
016-81-73-19	Miscellaneous	2,400.00	1,850.07	2,400.00	
CONGREGATIONAL LIFE					17,200.00
016-82-74-01	Worship Supplies	3,000.00	4,304.58	3,000.00	
016-82-74-03	Web Page	3,000.00	3,904.51	4,000.00	
016-82-74-04	Funeral/Wedding	0.00	411.82	0.00	

016-82-74-05	Advertising	6,200.00	6,751.50	6,200.00	
016-82-74-06	Adult Fellowship Activ's	600.00	644.77	600.00	
016-82-74-08	Hospital Flowers	100.00	91.57	100.00	
016-82-74-09	Golden Age	1,000.00	478.14	1,000.00	
016-82-74-10	Devotionals	1,550.00	1,520.83	1,550.00	
016-82-74-11	Volunteer Recognition	750.00	621.26	750.00	
016-82-74-12	Steven's Ministry	5,000.00	0.00	0.00	
MEMBERSHIP PARTICIPATION					1,900.00
016-84-76-02	Stewardship Material	1,000.00	0.00	1,500.00	
016-84-76-04	Stewardship Envelopes	400.00	394.97	400.00	
PROPERTY/FINANCE					154,507.66
016-85-78-01	Utilities/Church	68,500.00	59,710.48	68,500.00	
016-85-78-02	Telephone/Church	7,500.00	6,965.86	7,500.00	
016-85-78-04	Insurance/Church Bldg	18,227.66	17,765.15	18,227.66	
016-85-78-06	Repairs/Church	20,000.00	14,476.01	20,000.00	
016-85-78-08	Grounds/Church	2,400.00	4,729.59	2,400.00	
016-85-78-10	Utilities/Other Property	3,580.00	3,749.13	3,580.00	
016-85-78-16	Custodial Supplies	8,100.00	10,648.02	8,100.00	
016-85-78-17	Snow Removal/Contract	12,000.00	9,145.71	12,000.00	
016-85-78-18	Parsonages Maintenance	2,400.00	2,219.64	2,400.00	
016-85-78-19	Organ/Piano Maint	1,600.00	1,698.46	1,600.00	
016-85-78-20	Capital Expenditures	3,000.00	0.00	3,000.00	
016-85-78-25	Van	900.00	940.25	900.00	
016-85-78-26	Property Taxes/fees	6,300.00	6,271.34	6,300.00	
PRESCHOOL					140,440.00
016-90-10-01	Preschool Teacher Pay	99,400.00	89,068.94	99,400.00	
016-90-10-02	Preschool Director's Pay	33,540.00	32,700.00	33,540.00	
016-90-10-03	Preschool Supplies	7,500.00	6,372.61	7,500.00	
DEDICATED					51,700.00
016-91-52-03	Youth & Family Expenses	8,000.00	8,077.42	7,500.00	
016-91-52-04	Wedding Expenses	2,200.00	975.00	2,200.00	
016-91-52-07	Foundation Expenses	30,000.00	15,000.00	30,000.00	
016-91-52-10	Other Dedicated Expenses	18,000.00	17,743.11	12,000.00	
COFFEEHOUSE					115,570.00
016-92-00-01	MCH Payroll	47,100.00	47,336.36	47,100.00	
016-92-00-02	Coffee House Expenditures	1,200.00	0.00	1,200.00	
016-92-00-03	MCH Tip Jar	15,000.00	9,797.86	15,000.00	
016-92-00-06	MCH Food & Supplies	45,700.00	30,583.37	45,700.00	
016-92-00-07	MCH Sales Tax Payable	5,000.00	3,741.83	5,000.00	
016-92-00-08	MCH Credit Card Fees	1,570.00	1,294.30	1,570.00	
CEMETERY					16,850.00
016-93-00-01	Cemetery Expenses	16,850.00	14,765.83	16,850.00	
TOTAL		1,100,947.66	972,937.83	1,054,627.66	
INCOME LESS EXPENSE		-9,632.66	108,541.16	2,407.34	

Election to Council

Nominations for Church Council:

7 members, 4 year terms - (1 seat open)

Resolution A

RESOLUTION OF REMEMBRANCE

Origin: Church Council

Whereas: the following persons were members of the First Lutheran Congregation who died in the faith this past year, and have been committed to the Lord of Life:

<i>Rodney Foster</i>	<i>Bernard Ohlenkamp</i>	<i>Viola Bothe</i>
<i>Laurelle Ness*</i>	<i>Richard Minor</i>	<i>Lyle Arndt</i>
<i>Wilmar Olson</i>	<i>Wayne VanderWal</i>	<i>Adelaide Swanson</i>
<i>Clarke Blomberg</i>	<i>Elnore Johnson</i>	<i>Margaret Lengkeek</i>
<i>Elwyn Roach</i>	<i>Leroy Suurmeyer</i>	<i>Molu Zarpeleh</i>
<i>Peggy Rue</i>	<i>Laurie Ness*</i>	<i>Roberta Walz</i>
<i>Alex Kahler*</i>	<i>Alvin Carlson</i>	<i>Donna Kluess</i>

* *non-member funeral at First Lutheran*

Therefore: Be it resolved that we commend our brothers and sisters to the loving care of a gracious and loving God.

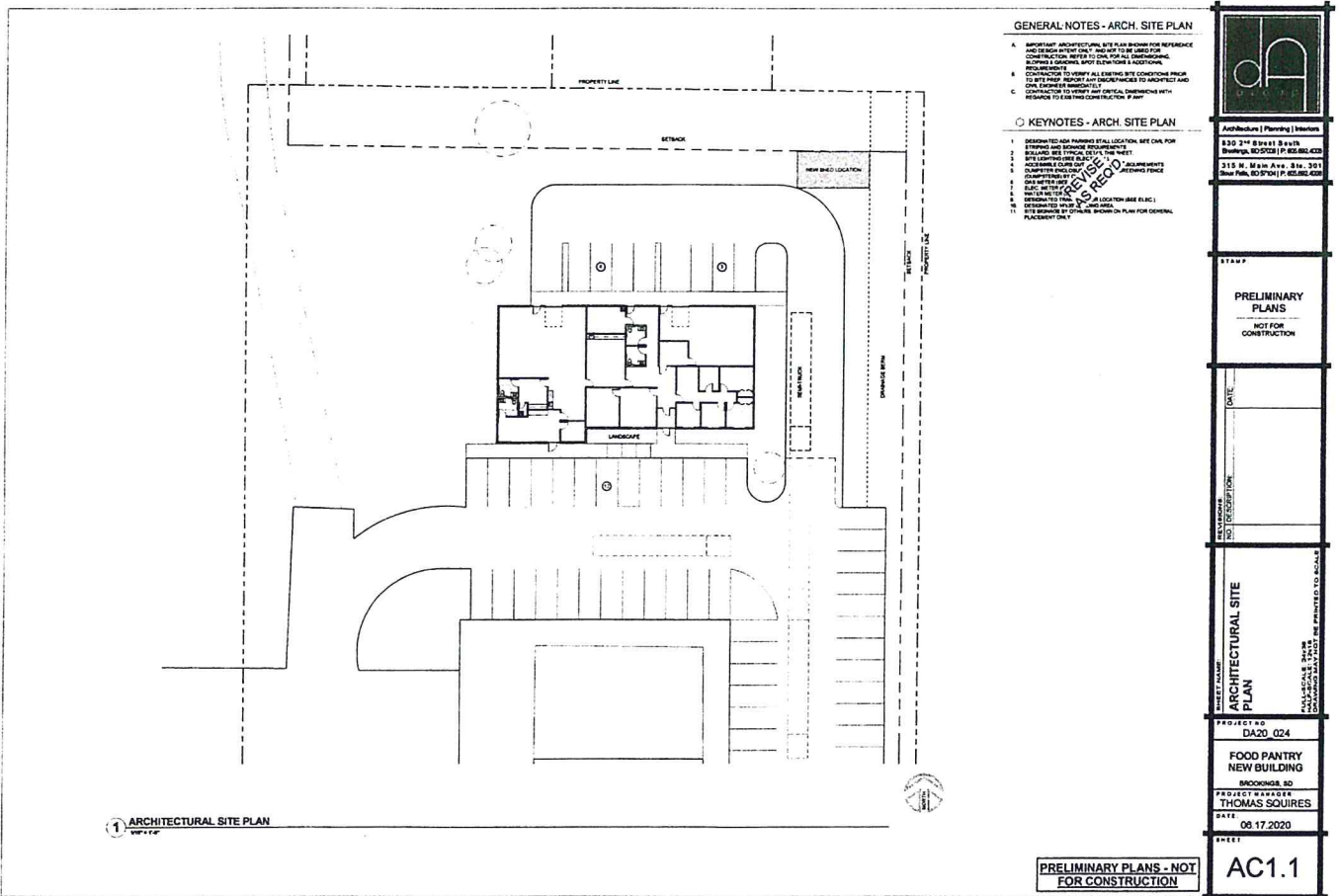
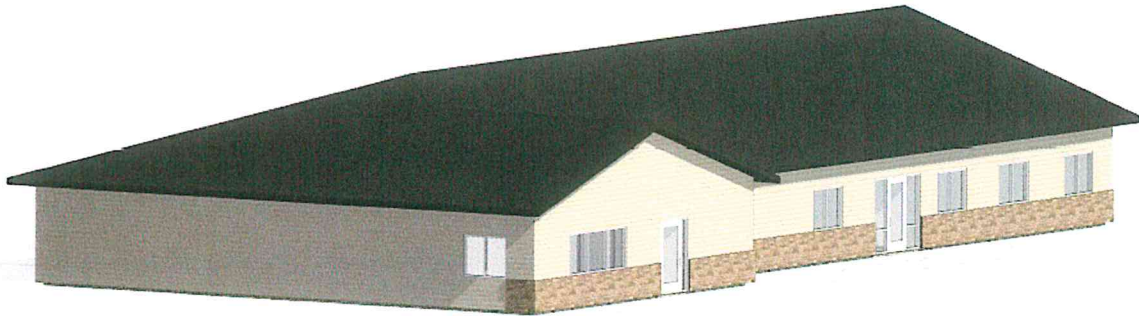
Resolution B

RESOLUTION TO ALLOW THE FOOD BANK TO BUILD A FACILITY ON FLC PROPERTY

Whereas: The vision of First Lutheran is to be a community engaging life and the world by and through God's gift of grace, and the mission is to equip all people to live a life connected with God and others. And *whereas* First Lutheran has been blessed by God with an abundance of land for the purpose of sharing God's gifts with the world, for making visible the kingdom of heaven by caring for the least of these who struggle. And *whereas*, First Lutheran created a Property Task Force to evaluate the use of our property and how best to fulfill our mission. The First Lutheran Church Council, on the recommendation of the Property Task Force, recommends the following...

Therefore: *Let it be resolved* that First Lutheran Church grant the Brookings Food Pantry permission to build a facility on the property located directly to the north of the preschool playground. First Lutheran will not be responsible for any costs associated with building the new facility, but will retain ownership of the land.

Further, that the First Lutheran Church Council will create a memorandum of agreement to help negotiate concerns as we move forward regarding facility use or property concerns.



Statistical Report
(September 1, 2019 through August 31, 2020)

	<u>August 31, 2019</u>	<u>August 31, 2020</u>
Baptized Membership	2165	2074
Baptized	27	15
Funerals	19	12
Weddings	6	5

Litany

- L. Gathering together as God's people in this place, may we always be aware of your presence in our midst.
- C. Lord, may we always be aware of your presence.
- L. Knowing that the Word is our light, may we continue to grow in our scriptural and confessional understandings.
- C. Lord, may our minds continue to grow in your word.
- L. Recognizing that stepping out in faith is not easy, we ask that you give us strength, O Lord, to listen and be bold and daring.
- C. Lord, give us the patience to listen and the strength to be bold and daring.
- L. While we strive to know ourselves and your will for us, may we build our relationships with our brothers and sisters in Christ.
- C. Lord, help us to build faith-filled and healthy relationships with others.
- L. Recognizing that we are often the ones asking, "And who is my neighbor?," may we open our eyes, ears and hearts to all those in the community in which we live.
- C. Lord, may we always be open to those in the community in which we live.
- L. Recognizing the importance of Moses, the prophets and disciples, may we work together to accompany and raise up leaders for your church.
- C. Lord, may we have the insight, encouragement and skills to raise up courageous leaders.
- L. Recognizing the many gifts you have entrusted to us, may we use these gifts to do your work in the world today.
- C. Lord, may we use the gifts entrusted to us to do your work.

God of Tempest, God of Whirlwind

1 God of tem - pest, God of whirl-wind, as on Pen - te -
 2 God of blaz - ing, God of burn - ing, all that blocks your
 3 God of earth - quake, God of thun - der, shake us loose from
 4 God of pas - sion, God un - sleep - ing, stir in us love's

cost de - scend! Drive us out from shel - tered com - fort;
 pur - pose, purge! Through your church, Christ's liv - ing Bod - y,
 leth - ar - gy! Break the chains of sin a - sun - der,
 rest - less - ness! Where the peo - ple cry in an - guish,

past these walls your peo - ple send! Sweep us in - to cost - ly ser - vice,
 let your flam - ing Spir - it surge! Where de - ceit con - ceals in - jus - tice,
 for earth's heal - ing set us free! Crum - ble walls that still di - vide us;
 may we share your heart's dis - tress. Rouse us from con - tent with e - vil;

there with Christ to bear the cross, there with Christ to bear the cross!
 kin - dle us to speak your truth, kin - dle us to speak your truth!
 make us one in Christ our Lord, make us one in Christ our Lord!
 claim us for your king - dom's work, claim us for your king - dom's work!

Text: Herman G. Stuempfle

Music: John Hughes

Text ©2000 GIA Publications, Inc. Chicago, IL 60638.

All rights reserved. Used by permission.

Reprinted under license #60631-ELCA-101419

- L. Let us pray. As we strive to be your church of the present and the future, may we nurture a spirit of collaboration and solidarity. May we all be partners in sharing the gospel and believing in Jesus Christ crucified and risen for the life of the world.

C. Amen.

Beyond the Wall: Making All Things New



When have you discovered newness in life through Christ? Did you have to step out in faith to do so? Perhaps you had to let go of your will and accept God's will. This

is a major turning point in the faith journey of many people. There are examples in Scripture about Job (Job 29-30), Elijah (I Kings 19:4-14), Mary Magdalene (Luke 8:1-2) and the women at the tomb (Luke 23:55 – 24:5). Consider the story of the rich young man (Matthew 19:16-26, Mark 10:17-31, Luke 18:18-30). He approached Jesus with a simple question: "What must I do to inherit eternal life?" Jesus replied, "Go, sell what you own, and give the money to the poor, and you will have treasure in heaven." When the young man heard this, he was very sad and walked away, because he was very rich. Given the choice, he found it difficult to forsake wealth in this world for the promise of God and eternal life.

Sometimes there are barriers or walls that complicate trying something new or stepping out in faith. What walls or barriers have you encountered? Consider the story of Zacchaeus (Luke 19:1-10), who wanted to witness Jesus preaching but was too short to see past the crowd. After Zacchaeus climbed a tree, Jesus called out to him and invited himself to lunch in Zacchaeus' home. We know what Jesus said to Zacchaeus,

and he was a different person afterward. He had changed from wanting wealth and success in this world to desiring significance through a life of faith. When have you, or your congregation, chosen success over significance? Perhaps when using numbers or the size of your facilities as a measure. Moving toward significance usually means sacrificing success. In what areas of ministry is your congregation seeking significance today?

Stepping out in faith may be a personal choice for a short time but usually involves accompanying others. As members in the body of Christ, we are not called to meet our own needs alone. The Great Commission (Matthew 28:16-20) calls us to go beyond our barriers and bring the message of Jesus Christ to others. This helps us grow beyond a Christian enclave to become servants of Christ and a serving community. In what ways has your congregation moved from an enclave to a servant community?

Overcoming barriers and walls to make things new involves stepping out in faith. It means shaking loose from lethargy and moving out from sheltered comfort. In the process we break the chains of sin that hold us back and divide us from making us one in Christ. When we share in the distress of God's heart to do the kingdom's work, we are in tune with God's will, choosing significance over success and becoming a servant community. This is when we feel the vitality of our faith and the power of the Holy Spirit. May you experience this newness in Christ in and through your ministry.