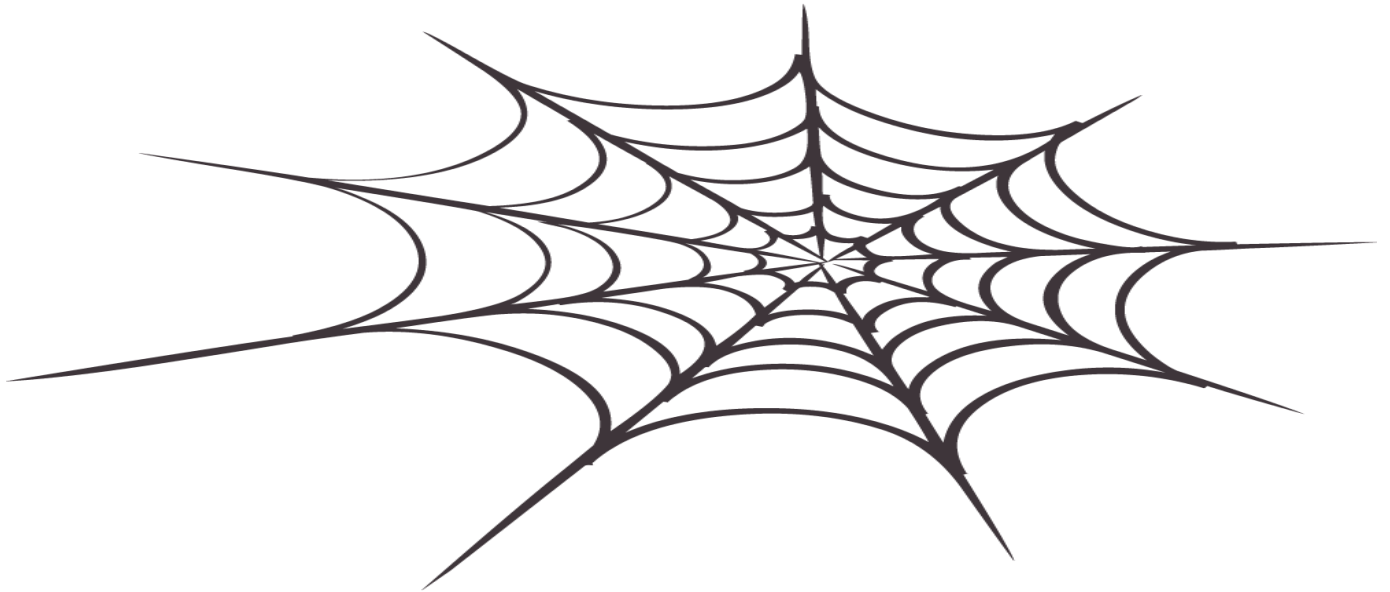


Unmasking The Spirit Of Jezebel



“Nevertheless, I have this against you:
You tolerate that woman, Jezebel...”

Revelation 2:20 (NIV)

Free From The Web Of Relational Demonics
Session 1: Unmasking The Spirit Of Jezebel

Freedom

Becoming Fully Alive!

 **FRESH START**

© 2004 Fresh Start For All Nations

© 2004 Fresh Start For All Nations

Freedom

Becoming Fully Alive!

Free From The Web Of Relational Demonic

Session 1	Unmasking The Spirit Of Jezebel
Session 2	Free From The Web Of Witchcraft
Session 3	Living Free With Divine Immunity



© 2004 Fresh Start For All Nations
www.freshstartforallnations.org

Where indicated (AMP): "Scripture quotations taken from the Amplified Bible,
Copyright © 1954, 1958, 1962, 1964, 1965, 1987 by The Lockman Foundation
Used by permission." (www.Lockman.org)

Scripture quotations marked (ASV) are taken from the HOLY BIBLE, AMERICAN STANDARD VERSION - Public Domain

Scripture quotations marked (KJV) are taken from the HOLY BIBLE, KING JAMES VERSION - Public Domain

Where indicated (NASB): "Scripture quotations taken from the New American Standard Bible",
Copyright © 1960, 1962, 1963, 1968, 1971, 1972, 1973, 1975, 1977, 1995 by The Lockman Foundation
Used by permission." (www.Lockman.org)

Scripture quotations marked (NIV) are taken from the HOLY BIBLE, NEW INTERNATIONAL VERSION®. NIV®.
Copyright© 1973, 1978, 1984 by International Bible Society. Used by permission of Zondervan. All rights reserved.

Scripture quotations marked "NKJV™" or (NKJV) are taken from the New King James Version®.
Copyright © 1982 by Thomas Nelson, Inc. Used by permission. All rights reserved.

I. UNMASKING THE SPIRIT OF JEZEBEL

"Nevertheless, I have this against you: You tolerate that woman Jezebel..."

Revelation 2:20 (NIV)

A. AHAB - ONE WHO TOLERATED JEZEBEL

1. Guilty of all kinds of evil and idolatry
 - a. I Kings 16:30-33
 - b. I Kings 21:25-26
2. Abdicated his authority
I Kings 21:7-16

B. JEZEBEL, THE WIFE OF AHAB - WHAT WAS HER NATURE?

1. Manipulation
I Kings 21:25-26
2. Witchcraft
II Kings 9:22
3. Idolatry
II Kings 9:22
4. Defiance
I Kings 19:1-2
5. Seduction
II Kings 9:30

C. WHAT IMPACT DID JEZEBEL HAVE ON OTHERS?

1. Upon Ahab?
 - a. He began to serve and worship Baal.
I Kings 16:31
 - b. He sold himself to do evil in the eyes of the Lord.
I Kings 21:25

2. Upon the Lord's Prophets?

She was killing them off.

I Kings 18:4

3. Upon Elijah?

a. He became afraid and ran for his life.

I Kings 19:3

b. He wanted to die.

I Kings 19:4

D. A REPRESENTATIVE INCIDENT - NABOTH'S VINEYARD

1. Ahab wanted Naboth's Vineyard, but Naboth declined.

I Kings 21:2-3

2. Ahab became sullen and angry, and refused to eat.

I Kings 21:4

3. Ahab abdicated his authority.

I Kings 21:7-16

4. Jezebel took matters into her own hands.

I Kings 21:5-7

5. Jezebel usurped her husband's authority and acted in his name.

I Kings 21:8-15

E. WHAT WAS GOD'S RESPONSE TO AHAB AND JEZEBEL?

God commissioned and anointed King Jehu to destroy the House of Ahab, avenging the blood of the prophets and the blood of all the Lord's servants shed by Jezebel.

1. II Kings 9:6-10

2. II Kings 9:30-37

II. APPLICATION

- A. Can you identify with the attitude and behavior of Ahab, the one who tolerated Jezebel? If so, how?

- B. Can you identify with the attitude and behavior of Jezebel? If so, how?

- C. In light of your answers to the above, describe the impact that your attitudes and behavior have had on others.

- D. In light of this session, have you been affected by one who has been operating under the influence of a spirit of Jezebel? If so, how?

- E. Can you see how a person who is influenced by a spirit of Jezebel is enabled by one who lives a life characterized by Ahab?

- F. **WILL YOU BE AN AHAB?**

- G. **WILL YOU TOLERATE JEZEBEL?**