

NEXT STEPS

Date ____/____/____

Name _____

Your Age Group
 18-22 23-30 31-35 36-40
 41-45 46-50 51-60 61-70 71+
 or
 Current School Grade
 K 1 2 3 4 5 6
 7 8 9 10 11 12 College

Please Indicate: Single Married

Address _____

City _____

State _____ Zip _____

Phone: _____

Email _____

I'd like to receive church communications via:
 Text Email Both

Is this your...
 1st Time? 2nd Time? 3rd Time?
 I am an: Attender Member

I came as a guest of _____

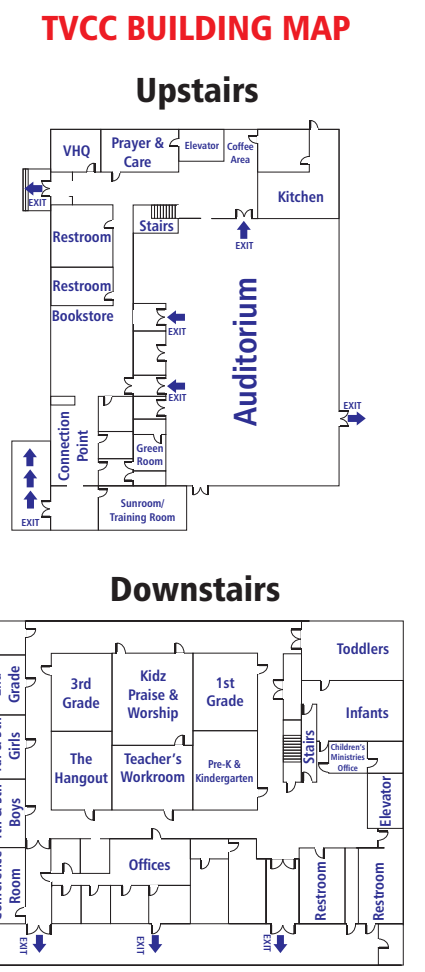
Names of children living at home & birthdates:

My Decision Today:
 I'm committing my life to Christ
 I want to be baptized
 I'm renewing my commitment to Christ
 Enroll me in the next...
 Class 101 How to Connect
 Class 201 How to Grow
 Class 301 How to Serve
 Class 401 Discovering My Life Mission
 Class 501 Discovering Worship

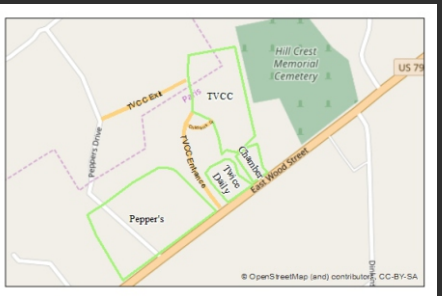
I'm interested in joining a Small Group
 I'd like info about Celebrate Recovery
 I'm willing to help where needed
 I'd like to talk to a staff minister

Fold and Tear Here

MAPS & PARKING



TVCC PARKING LOT SAFETY



Please ENTER the TVCC campus off WOOD STREET and EXIT on PEPPERS DRIVE.

This is to help the flow of traffic between services and for the safety of everyone!

CHURCH WIDE OPPORTUNITIES continued...

Our season of giving for the Showing We Care Christmas Offering continues through January 31st. This offering funds local and global missions through TVCC. It can be a one time offering or budgeted December-January.

SHOWING WE CARE 2022

WHAT'S YOUR Bible Reading Plan FOR 2023?

Make 2023 your year to grow closer to God! Pick up one of these great resources from the bookstore today! Read along, form a D-Group, start a study at your home or workplace.

Salvation Army Disaster Training

Thursday, January 26 at the Salvation Army 10:00 a.m. to 2:00 p.m.

Phase One of training must be completed prior to attending in person training on January 26. For Phase One please visit: <http://www.disaster.salvationarmyusa.org>

For more information contact: Kathy Urick at 210-663-8905

Co-Ed Volleyball

January 27 at FBC Gym
 TVCC 2 vs Maplewood 2 @7:30pm
 TVCC 1 vs Maplewood 1 @8:30pm

TVCC 1 is for 19 years old and up
 TVCC 2 is for 13 to 18 years old

Missing Something?

Please check Lost and Found in the Children's Department, located in the bins by the boy's bathroom downstairs. All unclaimed items will be donated to Charity after this week.

find help, discover hope, experience healing

DIVORCE Care

Sunday nights
 6:00 p.m. to 8:00 p.m.
 @ TVCC in the Prayer and Care Room
 Open to everyone and childcare is available

For more info: Chris Grissom at 731.336.8281 or chris.grissom.racing@gmail.com

Celebrate Recovery

CELEBRATE RECOVERY is a place to fellowship and celebrate God's healing power in our lives through the "8 Recovery Principles." By working and applying these 8 Biblical principles, we begin to grow spiritually. We become free from our addictive, compulsive and dysfunctional behaviors. This leads to a stronger relationship with God and others.

CELEBRATION PLACE is the approved children's curriculum for Celebrate Recovery ministries for ages 6-12. This Christ-centered curriculum mirrors the lessons taught in Large Group for adults. We refer to it as our "Pre-Covery" program.

All CR Programs meet every Thursday with Food and Fellowship beginning at 5:30 p.m. and meeting time from 6 p.m. to 8 p.m.


For more info contact: Jesse Gulish 731.697.5622




KNOW GRACE, SHOW GRACE
 But it displeased Jonah exceedingly, and he was angry
 Jonah 4:1


CHURCH WIDE OPPORTUNITIES

LIFELINE
BLOOD SERVICES
WEDNESDAY, JANUARY 25
2:00 PM - 6:00 PM
TVCC
LOWER LEVEL PARKING LOT



 **CLASS 501**
DISCOVERING WORSHIP
MEETS SUNDAY,
JANUARY 29 AFTER THE
11:00 SERVICE
Class meets at the TVCC Training Center
Childcare and lunch provided
Space is limited.
Register online www.tvcc.us

 **CLASS 101**
HOW TO CONNECT
MEETS SUNDAY,
FEBRUARY 5 @ 11:00 AM
Class meets at the TVCC Training Center
Childcare and lunch provided
Space is limited.
Register online www.tvcc.us



Please continue to bring toothbrushes and toothpaste
for the month of January to the collection boxes
at the upper and lower entrances and in Connection Point

The Gathering
COME SEEK GOD IN PRAYER
TUESDAY, JANUARY 31 AT 7:00 PM
CHILDCARE FOR INFANTS AND TODDLERS AVAILABLE

TVCC Women's Ministry Kickoff Event
Saturday, March, 4
Doors open at 9:15 for
fellowship and breakfast
Event starts at 10:00 a.m.
\$15 per person
Sign up at tvcc.us or text grounded to 7316418822
For more information contact Kim Walden:
731-641-8822 or kwalden@tvcc.us



Come see us in Connection Point today and meet the team!

SERMON NOTES

Know Grace, Show Grace
I AM JONAH—Part 4
January 22, 2023

But it displeased Jonah exceedingly, and he was angry. ² And he prayed to the LORD and said, "O LORD, is not this what I said when I was yet in my country? That is why I made haste to flee to Tarshish; for I knew that you are a gracious God and merciful, slow to anger and abounding in steadfast love, and relenting from disaster. ³ Therefore now, O LORD, please take my life from me, for it is better for me to die than to live." ⁴ And the LORD said, "Do you do well to be angry?" ⁵ Jonah went out of the city and sat to the east of the city and made a booth for himself there. He sat under it in the shade, till he should see what would become of the city. ⁶ Now the LORD God appointed a plant and made it come up over Jonah, that it might be a shade over his head, to save him from his discomfort. So Jonah was exceedingly glad because of the plant. ⁷ But when dawn came up the next day, God appointed a worm that attacked the plant, so that it withered. ⁸ When the sun rose, God appointed a scorching east wind, and the sun beat down on the head of Jonah so that he was faint. And he asked that he might die and said, "It is better for me to die than to live." ⁹ But God said to Jonah, "Do you do well to be angry for the plant?" And he said, "Yes, I do well to be angry, angry enough to die." ¹⁰ And the LORD said, "You pity the plant, for which you did not labor, nor did you make it grow, which came into being in a night and perished in a night. ¹¹ And should not I pity Nineveh, that great city, in which there are more than 120,000 persons who do not know their right hand from their left, and also much cattle?"

NOTES

VISITOR INFO

Hello!
Thank you for joining us for worship today. I pray you were welcomed, helped, and encouraged. If I can answer any questions about connecting with us or taking the next step in your faith journey, please let me know. *Pastor Steve*
 *Welcome
You belong here!*

ARE YOU NEW HERE?
If you are new to TVCC we would love to meet you in Connection Point. Look for the **NEW HERE?** sign.
We have a small gift of appreciation and want to help you get connected at TVCC.

got questions?

If you have questions, please visit us at the Got Questions? area in Connection Point.

TVCC NEXT STEPS
Everyone has a next step to take. We would love to help you take your next step on your journey of faith.
Please text "nextstep" to 731.641.8822 to learn more.



PRAYER REQUESTS

Hospital Info: _____

*THIS CAN BE DROPPED IN ANY OF THE RECEPTACLES LOCATED AT EACH AUDITORIUM EXIT DOOR AND MAIN ENTRANCE DOOR.