

## **Standing on the Promises (I John 5:6-13)**

### **Introduction**

### **Doubting God's Work (5:6-8)**

### **Doubting God's Word (5:9-13)**

# POP QUIZ

---

## QUESTION 1

---

- The components required for electrical induction to take place in a generator, transformer, or motor, include \_\_\_\_\_
  - Relative motion between the field and the conductor
  - A concentrated magnetic or electromagnetic field
  - A length of conductor
  - All the above

## QUESTION 2

---

- The \_\_\_\_\_ theory of personality has its basis in the theory of learning, and focuses on the effects of environment on one's personal characteristics and actions
  - Psychodynamic
  - Humanistic
  - Trait
  - Behaviorist

## QUESTION 3

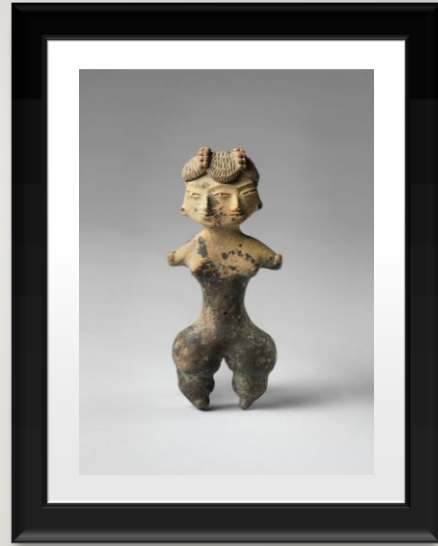
---

- The net effect of photosynthesis, chemically, is reduction, leading to the formation of which products
  - Carbon dioxide and carbohydrates
  - Carbon dioxide and protein
  - Oxygen and carbohydrates
  - Oxygen and ATP

## QUESTION 4

---

- Figurines such as the one shown can be considered most similar in content to the
  - Terra cotta fragment from Lapita
  - Beaker with ibex motifs
  - Ambum Stone
  - Jade *cong*



## QUESTION 5

---

- There are multiple ways to get to heaven
  - True
  - False
- Explain your answer

## QUESTION 6

---

- The Bible becomes the Word of God when it speaks to us
  - True
  - False

## QUESTION 7

---

- How can a person really know that he or she has eternal life and will never lose it?