

2018



New Life Church

ANNUAL REPORT

2018

Table Of Contents

Table of Contents

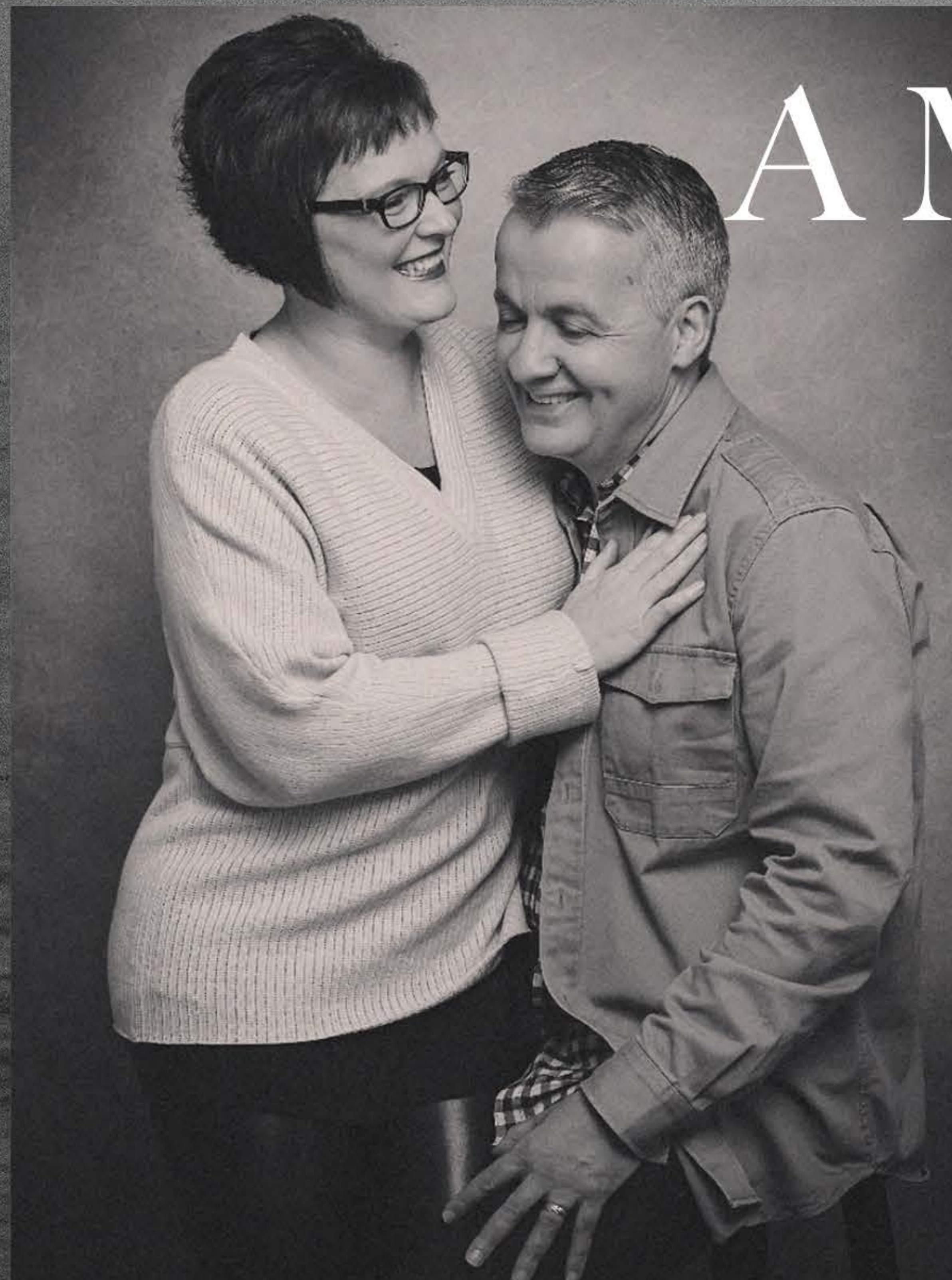
Attendance & Giving **3**

Connection Numbers **5**

New Life Financials **7**

ACTS13 **9**

Ways to Give **11**



A MESSAGE FROM OUR PASTOR

New Life is more than a church; it's a family, a family made up of incredible men and women brought together under one mission, leading people into a growing relationship with Jesus Christ. Jana and I want to thank you for being a part of the New Life family.

Because you are all committed to the mission of New Life, every weekend people are hearing the power of the Gospel in their lives, families are being strengthened, kids and youth are finding significance in God's Kingdom, and people are discovering the Lordship of Jesus Christ. Every week, friends study God's Word, serve, and share life together. This report is a brief look at the amazing things God did in 2018. The best is yet to come!

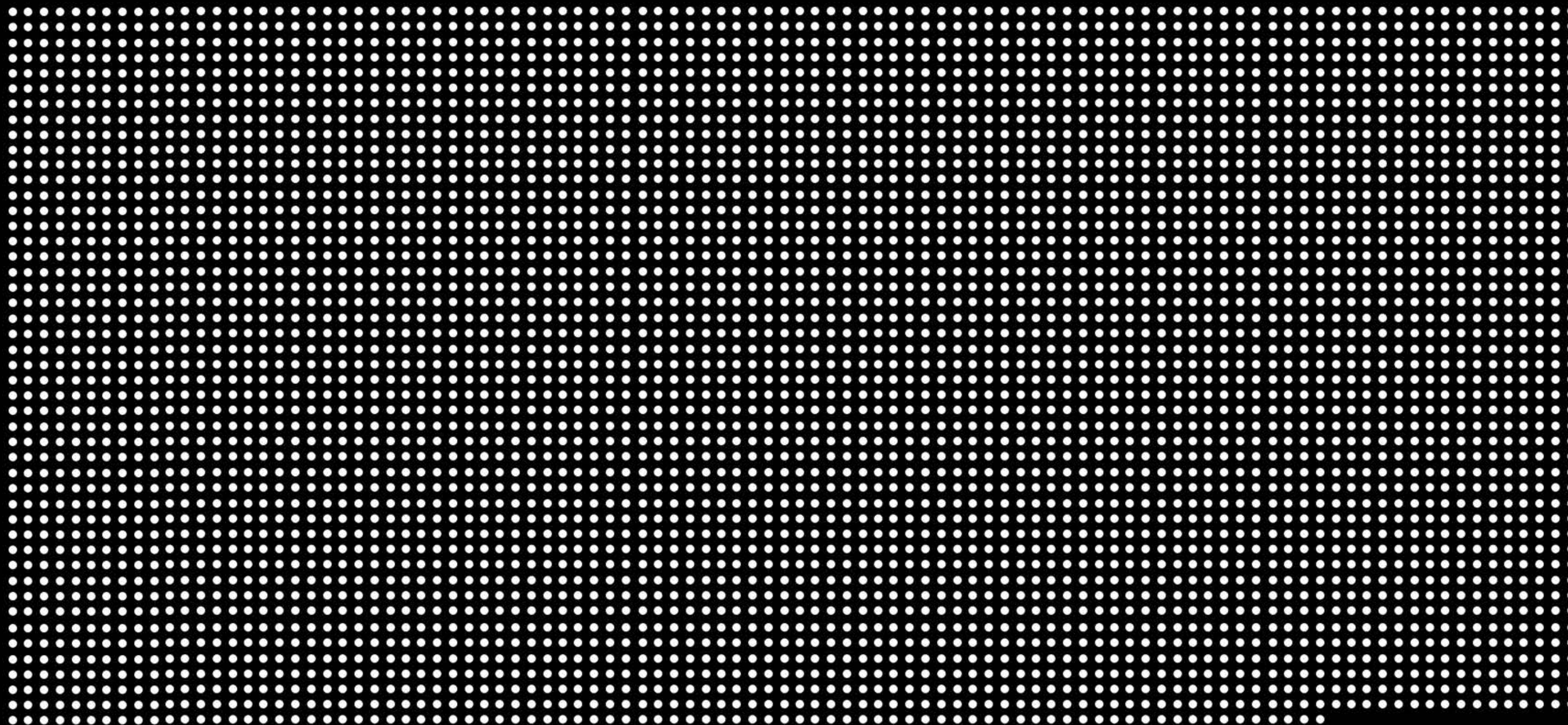
- Pastor Troy & Jana Jones

Attendance & Giving

4684 Average

*Up 11%
from
2017*

TOTAL WEEKEND ATTENDANCE FOR NEW LIFE CHURCH



By The Numbers

Renton Campus
2511

Kent Campus
849

Burien Campus
304

MV Campus
408

Church Online
612

Total NL Kids
953

Total NextGen
580

Total Tithes & Offerings

*Up 10%
From 2017* **\$6,473,790**

tithe

[noun, verb]

the act of giving back to God what's already His

Connection
Numbers

361 baptisms

Connection Numbers



264
life groups

2482
total participants



Four thin, dark diagonal lines are positioned around the text, pointing towards the center. Two lines are in the upper half, and two are in the lower half, creating a sense of focus on the central text.

LEADING PEOPLE INTO A GROWING RELATIONSHIP WITH JESUS CHRIST

MONET

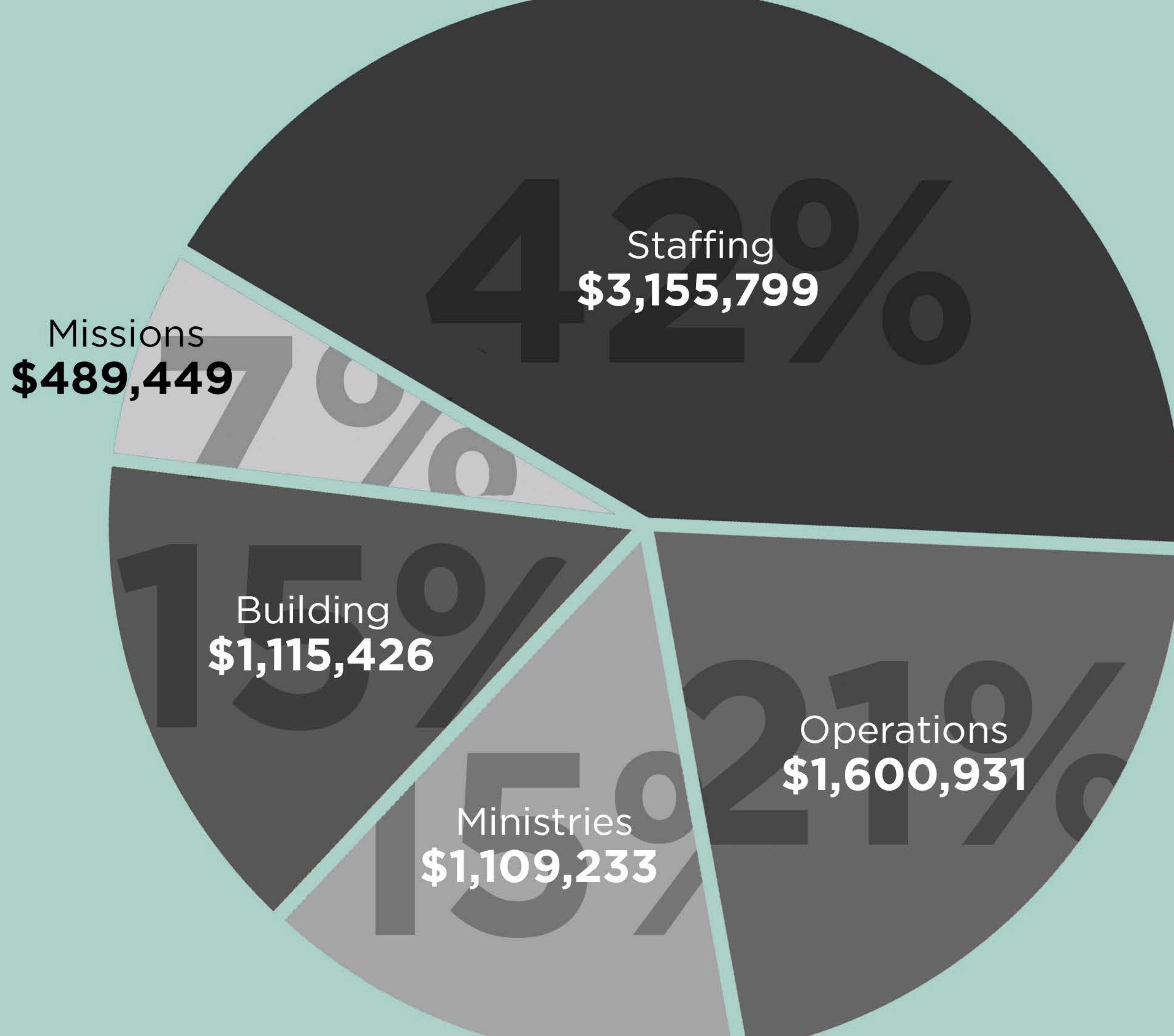
Total Operating Expenses **\$7,470,838**

Total Capital Expenses **\$1,192,441**

Total Income **\$6,719,083**

Total Expenses **\$8,663,279**

New Life Financials



ACTS₁₃



ACTS₁₃

ACTS 13 is the arm of New Life that partners with missionaries and ministries around the globe.

ACTS13 TOTAL:
\$489,449 | **7%** Of Every Dollar
Given Went To
ACTS13

Career Missionaries
\$192,201

Local Outreach
\$36,185

Disaster Relief
\$16,700

Community Partners
Church Plants

Convoy Of Hope

Mission Trips
\$108,700

Night to Shine
\$27,328

Benevolence
\$82,544

Camp Scholarships
\$20,496



Financial Practices

INTEGRITY
TRANSPARENCY
ACCOUNTABILITY

- ANNUAL INDEPENDENT AUDIT
- STRONG FINANCIAL CONTROLS
- CPA LED FINANCE OFFICE
- SEPARATION OF DUTIES
- REGULAR BUDGET/ACTUAL ANALYSIS
- DESIGNATED GIFTS USED AS INDICATED
- ANNUAL SPENDING PLAN APPROVED BY ELDERS
- QUARTERLY FINANCE COMMITTEE MEETING
- MONTHLY REVIEW & REPORT TO ELDERS
- ANNUAL FINANCIAL REPORT TO MEMBERSHIP
- ACCREDITED THROUGH ECFA (EVANGELICAL COUNCIL FOR FINANCIAL ACCOUNTABILITY)

*An annual audit is performed by the independent accounting firm of Freeman & Bonnema, PLLC.
Audited financial statements are available upon request. Please contact the church office for more information.



Ways To
Give

Ways To Give



Powered By:  Pushpay®

Text **NLCHURCH**
to **77977**

or go to
NLCHURCH.COM/GIVE



WWW.NLCHURCH.COM