

Discussion Questions

January 17, 2021

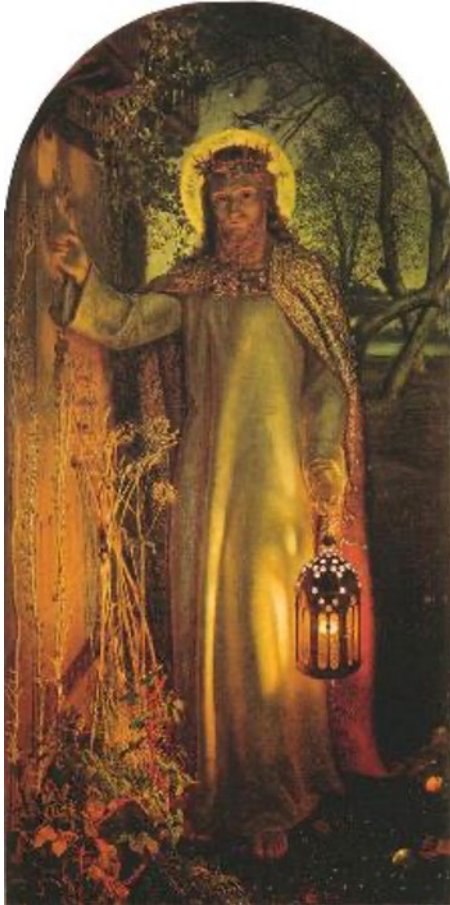
“Is Our Faith in Focus?,” John 1:43-51

43 The next day Jesus decided to go to Galilee. He found Philip and said to him, “Follow me.” 44 Now Philip was from Bethsaida, the city of Andrew and Peter. 45 Philip found Nathanael and said to him, “We have found him about whom Moses in the law and also the prophets wrote, Jesus son of Joseph from Nazareth.” 46 Nathanael said to him, “Can anything good come out of Nazareth?” Philip said to him, “Come and see.” 47 When Jesus saw Nathanael coming toward him, he said of him, “Here is truly an Israelite in whom there is no deceit!” 48 Nathanael asked him, “Where did you get to know me?” Jesus answered, “I saw you under the fig tree before Philip called you.” 49 Nathanael replied, “Rabbi, you are the Son of God! You are the King of Israel!” 50 Jesus answered, “Do you believe because I told you that I saw you under the fig tree? You will see greater things than these.” 51 And he said to him, “Very truly, I tell you, you will see heaven opened and the angels of God ascending and descending upon the Son of Man.” (New Revised Standard Version)

Discussion Questions & Things to Ponder

- Think about a time when life have seemed out of focus for you? What was going on that made that time a struggle? If you're in a group, spend some time talking about shared experiences of losing focus in life.
- What are some ingredients that seem to be present when people lose focus in a spiritual sense? What are some ways in which you try to keep your faith in focus?
- Gregg suggested in the sermon that Jesus saw people differently. What does it take for us to see people differently? What are some examples of times when someone you know or you have seen someone differently than maybe the rest in your group?
- Philip suggests that Nathanael, “Come and see.” He suggests that Nathanael discover for himself this Jesus that he's found. Talk a little about the importance of self-discovery in the learning process.

- Romans 15:5 says, “May the God of steadfastness and encouragement grant you to live in harmony with one another, in accordance with Christ Jesus.” Gregg suggests that Paul is encouraging a drift toward grace in how we treat people and interact with them. What’s it take to drift toward grace?



Take a long look at Holman Hunt’s picture, “The Light of the World.” Do you see this as Jesus knocking at the outside of our lives wanting to come in or is Jesus inside our lives inviting us to go out?

Which of the two would be more meaningful for you considering where you’re at in life right now?