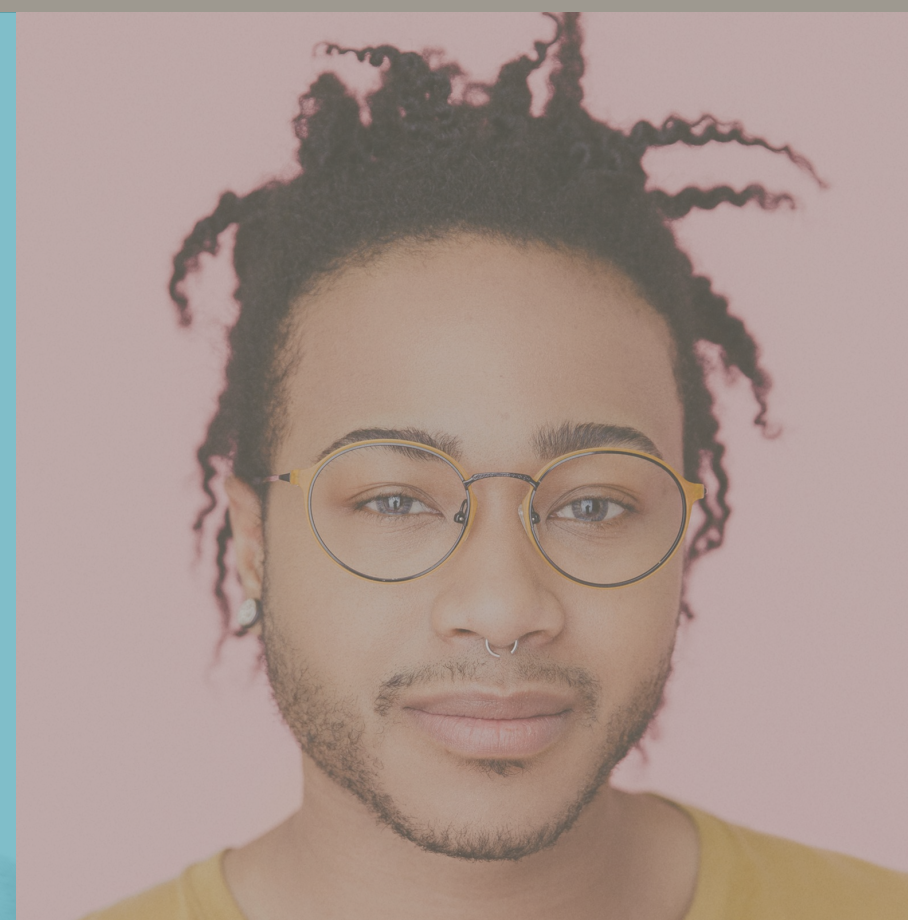


W

E



**A people
supernaturally
equipped**

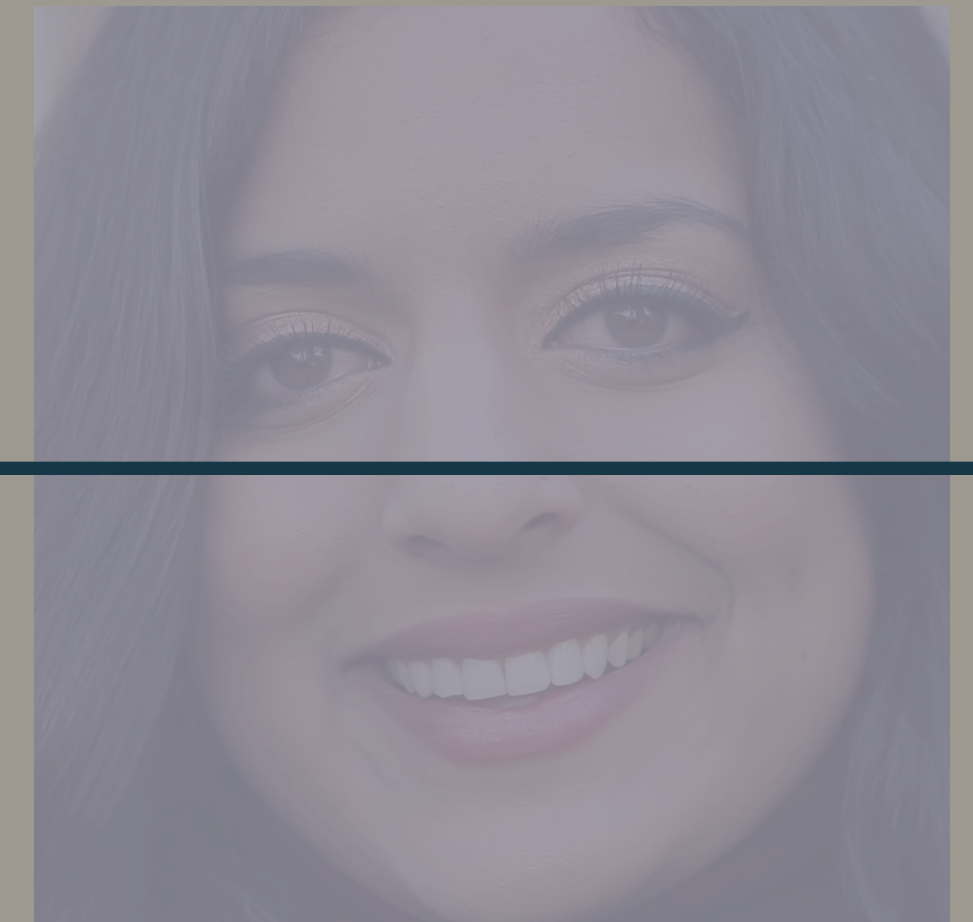


A

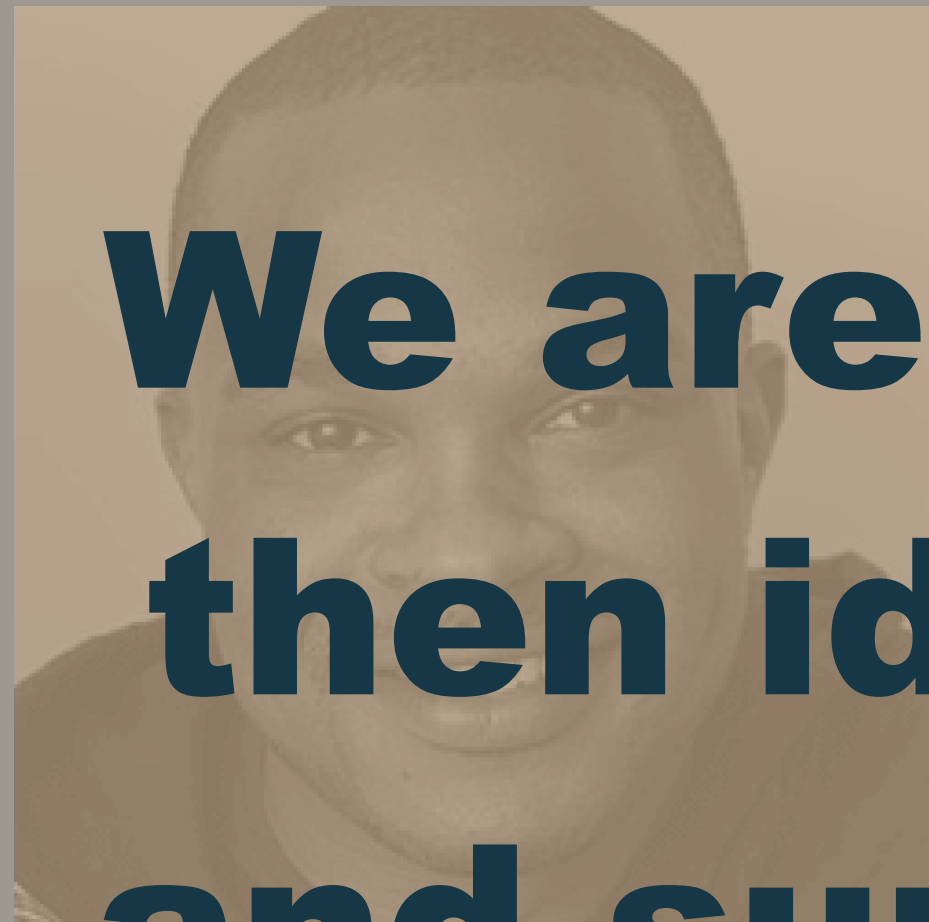
R

E

Who are WE?



**We are first a people of His presence,
then identity focused, love motivated
and supernaturally equipped family of
families.**





Ephesians 4:1-16





Matthew 4:18-22



Word Of The Lord

I've placed more weights around the bottom of my net today, to go out into the deep and cast far and wide. The catch will surprise you, for only I know the hearts of men. I am fishing for those who are swimming in the deep waters of my love and truth. I am casting my net today to gather those who will empty themselves and follow me. For I emptied myself for you, will you now empty yourself for me? You won't stay empty long, I will fill you and you will overflow.

I'm drawing out fishers of men. Those who can see beyond the natural state of things. See through the eyes of the Spirit this morning for the waters are rising. What looks dead to the natural eye will be a sign and a wonder in the earth. The waters are rising, ready your nets, let me mend the broken places and align you with my calling for your life. I have always had gifts for you and I will show you how to use them.

Make your heart one with me and with each other for a divided heart makes one weak. For there is one body and one Spirit, one hope of your calling, one Lord, one faith, one baptism and one God and Father of all.

“Come Follow me and I will make you fishers of men.”

What's next?

- 1. Pick up a devotional.**
- 2. Pray 2 Thessalonians 1:11-12 every day this week.**
- 3. Identify the holes in your net that need mending.
What steps can you take to mend them?**
- 4. Identify the places/relationships where God is asking you to be internally aligned.**
- 5. Ask the Lord for action steps you can take to align yourself and take the risk.**

