



HOW **NOT** TO SABOTAGE YOUR CHURCH

A STUDY OF ROMANS 14-15



**POWERPOINT
SERMON NOTES**
NOW AVAILABLE IN CHURCH APP



FOLLOW ALONG



DOWNLOAD PDF

A black and white photograph of a church steeple with a weather vane on top, set against a light background. The steeple is dark and has a pointed top. The weather vane is a small flag-like shape.

ROMANS 15:1-6

ESV - English Standard Version

“We who are strong have an obligation to bear with the failings of the weak, and not to please ourselves. Let each of us please his neighbor for his good, to build him up. For Christ did not please himself, but as it is written, “The reproaches of those who reproached you fell on me.” For whatever

HOW **NOT** TO
SABOTAGE
YOUR CHURCH

A black and white photograph of a church steeple with a weather vane on top, set against a light background. The steeple is dark and has a pointed top. The weather vane is a small flag on a pole.

ROMANS 15:1-6

ESV - English Standard Version

“was written in former days was written for our instruction, that through endurance and through the encouragement of the Scriptures we might have hope. May the God of endurance and encouragement grant you to live in such harmony with one

**HOW NOT TO
SABOTAGE
YOUR CHURCH**

A black and white photograph of a church building. The image shows a tall, dark steeple with a weather vane on top, and a white entrance with a pediment. The image is partially obscured by a semi-transparent white geometric shape.

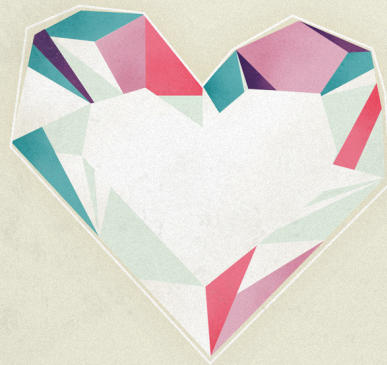
ROMANS 15:1-6

ESV - English Standard Version

“another, in accord with Christ Jesus, that together you may with one voice glorify the God and Father of our Lord Jesus Christ.”

HOW **NOT** TO
SABOTAGE
YOUR CHURCH

OUR ATTITUDE IN OUR
CHURCH IS TO BE
“US” AND “WE”
NOT “I” AND “ME”





- The “Obligation”
- The “Result”

1. The “Obligation”

Romans 15:1 (ESV) “We who are strong have an obligation to bear with the failings of the weak, and not to please ourselves.”

1. The “Obligation”

Who are the strong?

HOW **NOT** TO
SABOTAGE
YOUR CHURCH

1. The “Obligation”

Who are the strong?

Romans 14:14 (ESV) “I know and am persuaded in the Lord Jesus that nothing is unclean in itself...”

HOW **NOT** TO
SABOTAGE
YOUR CHURCH

1. The “Obligation”

Who are the weak?

Romans 14:14, “But it is unclean for anyone who thinks it unclean.”

HOW **NOT** TO
SABOTAGE
YOUR CHURCH

MESSIANIC JEWS



GENTILE CHRISTIANS



What is “the obligation”?

**THE DUTY OF THE STRONG IS TO YIELD
TO THE WEAK.**

**HOW NOT TO
SABOTAGE
YOUR CHURCH**

A black and white photograph of a church building. The left side shows a tall, dark steeple with a weather vane on top. Below the steeple, the white entrance of the church is visible, featuring a pediment and columns. The background is a light, hazy sky.

ROMANS 15:1

ESV - English Standard Version


“We who are strong have an obligation to bear with the failings of the weak, and not to please ourselves.”

HOW NOT TO
SABOTAGE
YOUR CHURCH

A photograph of a group of people camping. In the foreground, a woman with blonde hair is smiling and holding a white coffee cup. To her right, a man with a beard and a green cap is also smiling and holding a white coffee cup. In the background, a red and white tent is visible. The scene is set outdoors with trees in the distance. An orange square is overlaid on the center of the image, containing the text 'GALA TIAN S6:2 ESV'.

**GALA
TIAN
S6:2
ESV**

Bear one another's burdens, and so fulfill the law of Christ.

A man in a blue patterned shirt is serving food from a green pot to a group of people at an outdoor gathering. The scene is set under a white canopy with string lights, surrounded by greenery. Other people are visible in the background, including a woman in a white top and another in a blue denim shirt.

ROMAN
S15:2
ESV

Let each of us please his neighbor for his good, to build him up.

A black and white photograph of a church steeple with a weather vane on top, set against a light sky. The steeple is dark and has a pointed top. The weather vane is a small flag on a pole.

ROMANS 15:3

ESV - English Standard Version

“For Christ did not please himself, but as it is written, “The reproaches of those who reproached you fell on me.”

HOW **NOT** TO
SABOTAGE
YOUR CHURCH



JOHN
4:34
ESV

My food is to do the will of Him who sent me

1 Corinthians 6:12a (ESV) “All things are lawful for me,” but not all things are helpful.”

1 Corinthians 8:13 (ESV) “Therefore, if food makes my brother stumble, I will never eat meat, lest I make my brother stumble.”

Social Media



Twitter



Snapchat



Facebook



Messenger



WhatsApp



Instagram



YouTube



Pinterest



LinkedIn

A black and white photograph of a church steeple with a weather vane on top, set against a cloudy sky. The steeple is dark and has a pointed top. The weather vane is a small flag-like shape.

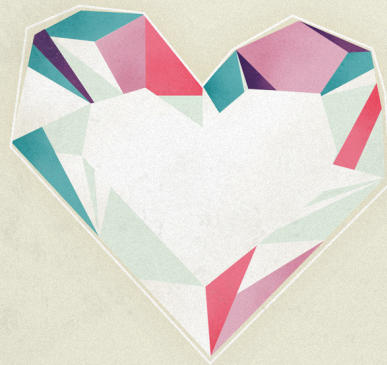
PHILIPPIANS 1:27

ESV - English Standard Version

“Let your manner of life be worthy of the gospel of Christ.”

HOW **NOT** TO
SABOTAGE
YOUR CHURCH

OUR ATTITUDE IN OUR
CHURCH IS TO BE
“US” AND “WE”
NOT “I” AND “ME”



A black and white photograph of a church steeple with a weather vane on top, set against a light background with geometric shapes.

ROMANS 15:4

ESV - English Standard Version

“For whatever was written in former days was written for our instruction, that through endurance and through the encouragement of the Scriptures we might have hope.”

HOW **NOT** TO
SABOTAGE
YOUR CHURCH



EPHESIANS 2:12

ESV - English Standard Version

“...remember that you were at that time separated from Christ, alienated from the commonwealth of Israel and strangers to the covenants of promise, having no hope and without God in the world.”

HOW **NOT** TO
SABOTAGE
YOUR CHURCH



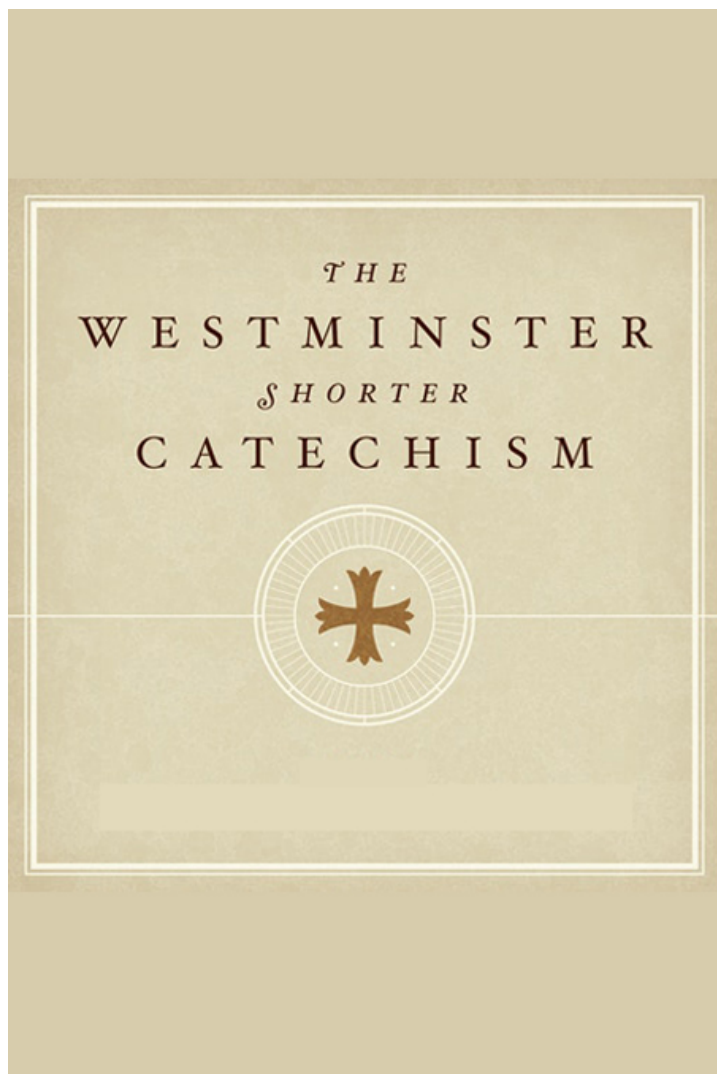
YouVersion[®]

The Bible App[™]

Download for Free

2. The “Result”

Romans 15:5-6 (ESV) “May the God of endurance and encouragement grant you to live in such harmony with one another, in accord with Christ Jesus, 6 that together you may with one voice glorify the God and Father of our Lord Jesus Christ.”



Q: What is the chief end of man?”

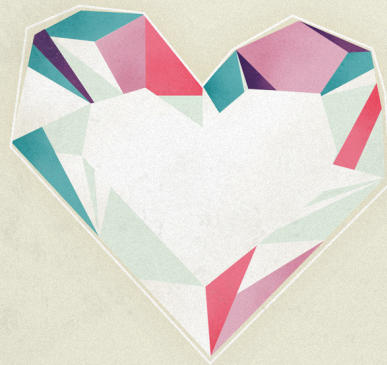
A: The chief end of man is to glorify God and to enjoy Him forever.

2. The “Result”

Romans 15:5-6 (ESV) “May the God of endurance and encouragement grant you to live in such harmony with one another, in accord with Christ Jesus, 6 that together you may with one voice glorify the God and Father of our Lord Jesus Christ.”



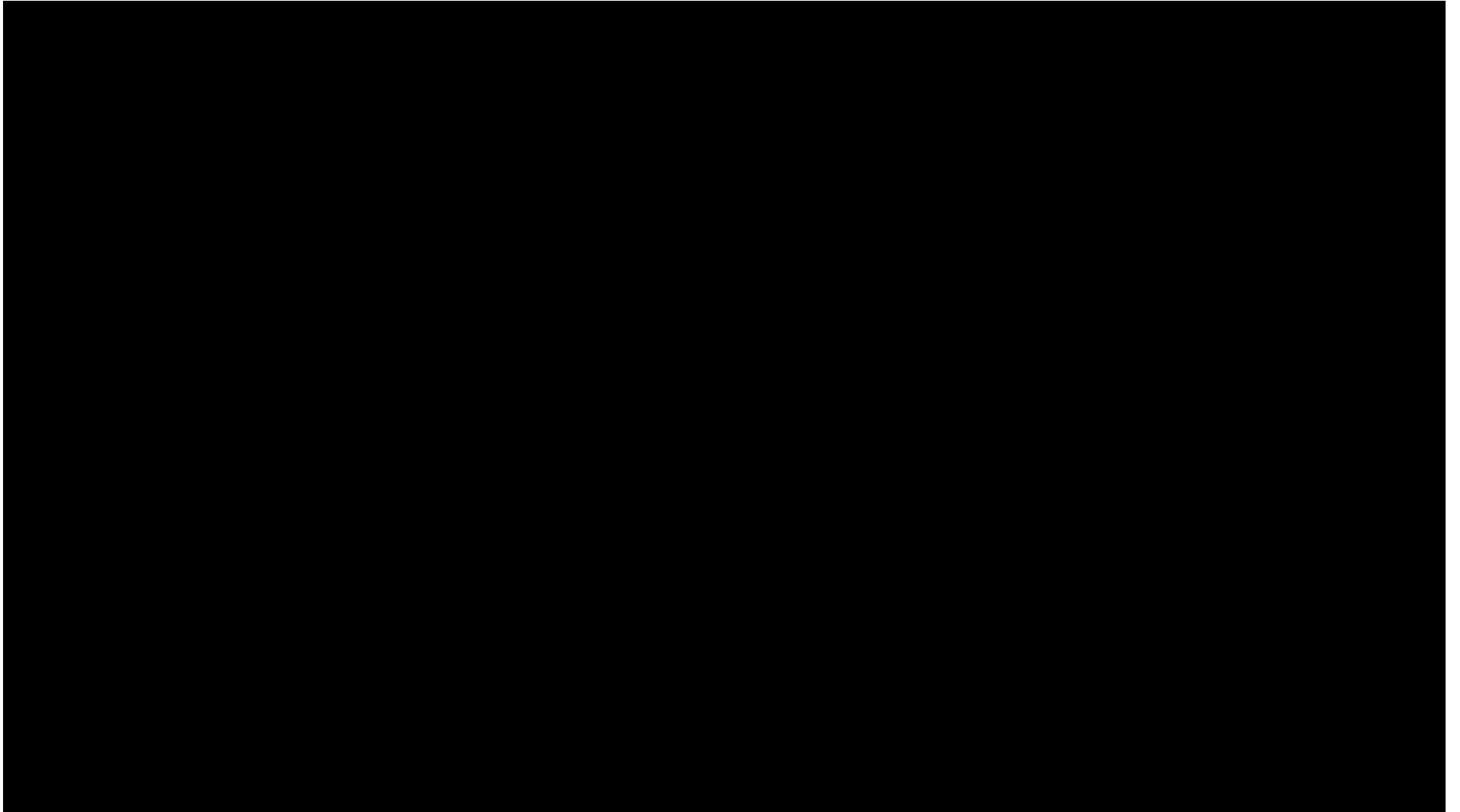
OUR ATTITUDE IN OUR
CHURCH IS TO BE
“US” AND “WE”
NOT “I” AND “ME”





HOW **NOT** TO SABOTAGE YOUR CHURCH

A STUDY OF ROMANS 14-15



WE'D LIKE TO
KNOW YOU
 FILL OUT A **CONNECTION CARD**

*GET A FREE T-SHIRT

www.grace4families.com



*"To Raise U
 Families th*

» **CONNECTION CARD** «

NAME TODAY'S DATE

EMAIL (Please print)

ADDRESS

CITY

STATE ZIP BEST CONTACT PHONE

HOW DID YOU HEAR ABOUT GRACE?

Driving By Friend + Family
 Social Media Other:
 Website

I would like to talk to someone about:

- Becoming a new follower of Jesus Christ
- Rededicating my life to Jesus Christ
- Getting Baptized (water immersion)
- Making Grace Church my Home Church
- Baby Dedication
- Serving at Grace Church

I would like more information about:

- Men's Groups
- Women's Groups
- College-Age Groups
- Small Groups (co-ed)
- Children's Ministry
- Nursery 0-2
- Preschool 2-5
- K-6
- Student Ministry
- J. High (7th - 8th)
- Sr. High (9th - 12th)

WHICH SERVICE DID YOU ATTEND? 8:15a 9:45a 11:15a 6p

PLEASE BRING THIS CARD TO THE GUEST SERVICES TABLE IN THE LOBBY AND RECEIVE A FREE T-SHIRT AS OUR GIFT TO YOU.

www.grace4families.com

A photograph of two hands clasped together on a wooden surface. The hands are positioned on the left side of the frame, with fingers interlaced. The background is a warm-toned wooden table with visible grain. Overlaid on the right side of the image are two dark blue rectangular boxes containing white text. The top box contains the question 'NEED PRAYER?' and the bottom box contains the response 'WE'LL BE UP HERE AND WOULD LOVE TO PRAY WITH YOU'.

NEED
PRAYER?

WE'LL BE UP HERE
AND WOULD LOVE TO
PRAY WITH YOU

