



# Builders



2020 PROJECT GUIDE

# YOU ARE THE LIGHT OF THE WORLD

“You are the light of the world.  
A city on a hill can not be hidden.”

**Matthew 5:14 (ESV)**

Jesus said it, and I want us to embody it. In a world of disturbing darkness, we boldly ask God to let us carry the torch of the life-giving message of Jesus Christ. We gladly embrace a holy discontent for the lost, forgotten, and broken.

Vision Builders encompasses this passion to reach people globally, to reach people locally, and to raise up future Christian leaders who carry this same burden. Unashamedly, we want to be the church that is willing to reach people no else is reaching.

It's for this reason, I'm praying for you to join me in 2020 and declare, "I am a Vision Builder." For you to look in the mirror and confidently profess, "Giving to Vision Builders is not just something I do, its who I am. I am a Vision Builder."

After all, it's not just what vision IS - it's what our vision DOES.

*Rich Lamm*



# WHAT HAPPENS WHEN WE GIVE

*to Vision Builders?*

At Christ Place, we believe in the tithe - giving back to God the first 10% of our income. You'll see it throughout Scripture - a heart touched by God gives 10%. The intent of this act of obedience is about putting God first. The tithe is used for the operations and day-to-day ministry of Christ Place Church.

When you give to Vision Builders, above and beyond the tithe, we come together as the body of Christ, each doing our individual part to rise up and see the extraordinary. It's about generosity and faith at another level.

When you catch the heartbeat of generosity to give to Vision Builders, you BECOME a Vision Builder in our local church. It means you live differently, you realign your budget and priorities to resource a vision to reach the lost, forgotten, and broken in our community and around the world.

We are convinced, when you go above and beyond your tithe, God will go above and beyond *for you and through you*. There's nothing more exciting than making a difference and bringing hope to thousands!



# FAITH THAT GOES ABOVE & BEYOND

*The tithe is about obedience. Vision Builders is about generosity and faith at another level.*

PRAY | GIVE | GO

# WE ARE VISION BUILDERS

*Vision Builders are a group of fully committed people who prayerfully commit to give, above and beyond their tithes, to global missions, local church expansion, and future Christian leaders.*

## GLOBAL MISSIONS

---

God desires for every nation, tribe, and tongue to worship Him, and we do too! We strategically partner with global missionaries, organizations, and projects to spread the hope of Christ around the world. We want everyone to experience a life-changing relationship with Jesus.

## LOCAL CHURCH EXPANSION

---

God's mission has a church! We exist to be a light to our city for more people to know His name. Through strategic partnerships, church planting, and campus expansion, we are His hands and heart extended to the lost and hurting. We have a specific calling to reach families and children at risk.

## FUTURE CHRISTIAN LEADERS

---

We are committed to come alongside the next generation of Christian leaders to empower, inspire, and equip them to fulfill God's call on their life and carry the burden of reaching the lost, forgotten, and broken wherever God may lead them.

# GO AND MAKE DISCIPLES

“I have been given all authority in heaven and on earth. Therefore, go and make disciples of all the nations, baptizing them in the name of the Father and the Son and the Holy Spirit. Teach these new disciples to obey all the commands I have given you. And be sure of this: I am with you always, even to the end of the age.”

**Matthew 28:18-20 (NLT)**



## GLOBAL MISSIONS

*all nations*

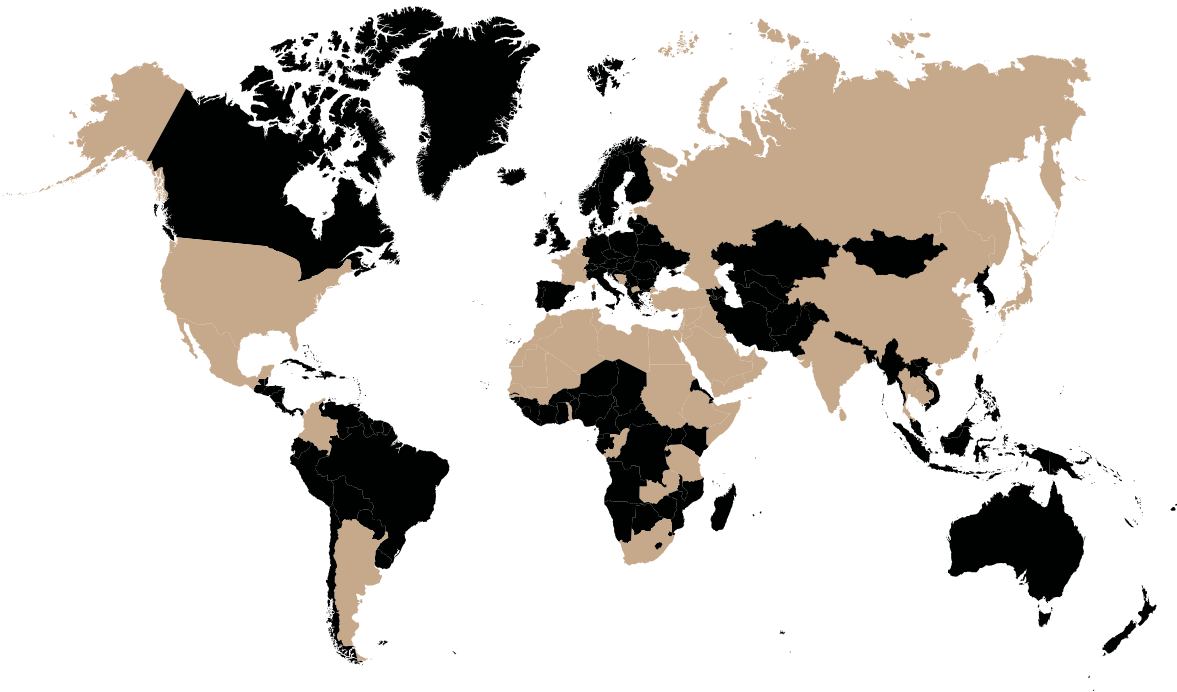
# GLOBAL MISSIONS

support

WE PROVIDE MONTHLY SUPPORT TO

**65** missionaries & organizations who are committed to helping reach at-risk families, meet needs, plant churches, and disciple unreached people.

**\$164,000**



## ASSEMBLIES OF GOD WORLD MISSIONARIES

Annis, Mike & Jodie  
Arzouni, David & Linda  
Davis, Brian & Laura  
Edinger, Kirstin  
Elliot, John  
Gonzales, Juan Carlos & Colette  
Hobbs, Curtis & Sara  
Huisinga, JJ & Jessica  
Hurst, Pat & Suzanne  
Linneweh, Kent & Leslie  
Lowenberg, Doug & Corrine  
Ly, Dareth & Thida  
Marbut, Joil & Leah  
Puccini, Nick & Olivia  
Prabhudas, Manuel & Tina  
Rider, Nicky & Janie  
Ridpath, Bruce & Lisa  
Silva, Ty & Cina  
Spain, Kirk & Marlene  
Thomas, Brian & Colleen  
Wajda, Steve & Kim  
Walz, Brad & Rhonda  
Wang, Solomon & Lori

## LIVE DEAD MISSIONARIES

Brogden, Dick & Jennifer  
Elder, Chad & Jamie  
Fischer, Caleb & Toktam  
Haase, Jeff & Mary Beth  
Hansen, Scott & Karen  
Korenak, Elizabeth

## ASSEMBLIES OF GOD US MISSIONARIES

Akright, Peter & Wilma  
Lang, Rick & Diana

## CHI ALPHA MINISTRIES

Herman, Harvey & Sally  
Hoffman, Mark & Sue  
Malcolm, Rob & Sarah  
Martin, Scott & Crystal  
Novosad, Brad & Shelley

## WYCLIFFE BIBLE TRANSLATION

Marcuson, Mark  
Waugh, Barb  
Walek, Chuck & Vanay

## GLOBAL IMPACT

Bethlehem Bible College  
Community Concern Society  
DeLaurentis, Chris & Monica  
Johnson, Jean  
Koelmeyer, Roger & Therese  
Kuert, Steve & Bailey  
McNamee, Michael & Beryl  
Meidlinger, Mark & Bev  
Menzies, Robert & Joanne  
One Hope  
Shamala, Tim & Karla

## LOCAL IMPACT

City Impact  
Crisis Pregnancy Center  
Nebraska Family Alliance  
People's City Mission  
Teen Challenge  
Christian Heritage - Care Portal  
L5 Youth Ranch  
Parent Life - Tiffany Leonida  
Teen Reach - Will & Angela Prussia

**+6 NEW in 2020**



# GLOBAL MISSIONS

*projects*

**“Some want to live within the sound of church or chapel bell; I want to run a rescue shop, within a yard of hell.”**

- C.T. Studd

PRAY | GIVE | GO

## Convoy of Hope

### Feed One

Each day, millions of children suffer from hunger and malnutrition. Ending world hunger requires holistic solutions. These solutions start with a warm bowl of food. We want to continue to feed 300 children a year by partnering with Convoy of Hope - Feed One. Currently, they feed children in Tanzania, South Africa, Philippines, Nicaragua, Honduras, Kenya, Haiti, Guatemala, Ethiopia, El Salvador, and the Dominican Republic.

### Disaster Relief

It is inevitable that disaster is going to strike, and when it does, we want to be ready. We will have funds available to help meet urgent, critical needs in our country and around the world.

**\$50,000**



## Ecuador Church

We are going to break ground on a new church in the Huambi village outside of Sucua, Ecuador. The funds will allow for a structure to be built and for their leadership to expand their reach in the jungles of Ecuador.

**\$20,000**



## One Hope

The mission of One Hope is to take God's word to every child. They provide engaging text and audio resources so that children and youth can engage with Scripture and the Church can disciple the next generation.

**\$5,000**



## Missionary Resources

### Speed the Light

Provides essential transportation and creative communication equipment for missionary evangelism across the nation and in over 180 countries around the world. We are going to provide funds for a Convoy of Hope refrigerated truck to be used to help meet urgent needs for disaster relief.

### Light for the Lost

Empowers the church to provide God's Word for every person on the planet by providing resources such as audio, visual, and printed materials for evangelism. People groups are more receptive of the gospel message, and bible, when it is in their own language. We are going to help complete a Fire Bible, which is a complete study bible, in another language.

### Boys and Girls Missionary Challenge

Helps missionaries be resourced to meet critical needs through feeding programs, water wells, Bible schools, curriculum, and anything else a missionary may need in their part of the world. We will be helping complete a project with Compact Family Ministries that reach kids at risk, and a project with Live Dead India (Joseph Gordon) to help to help send national pastors' kids to school when they can't afford it, so they can stay on the field.

**\$50,000**





# LOCAL CHURCH

*Expansion*

REACH THE LOST

**WE EXIST FOR  
THOSE WHO**

*aren't here yet*

## Campus Development

### Future Christ Place Expansion

As a church we are continually looking at future opportunities for ministry in unreached areas of Lincoln and beyond. We are excited to invest in future campuses and in rural communities that wouldn't otherwise have a thriving evangelical church. We are positioning ourselves to be ready to act when God gives us our next campus expansion opportunity.

**\$100,000**

# LOCAL CHURCH projects

LIVE TO GIVE

**We sacrifice what we love for what we love more. We have been blessed to be a blessing.**



## Community Events

From Eggstravaganza in the spring to I Heart LNK in the summer, to Boo at the Zoo in the fall, and the Angel Tree Christmas Party in the winter. We want to serve our city through special outreaches and events to let them know that Christ Place exists for them and they are welcome here!

## Community Outreach

We have a unique opportunity to create a published book full of Christ Place stories of Souls Saved and Lives Changing. We exist for those who aren't here yet, so this testimony book will be mailed to specific areas in our city that we are trying to reach. We have a story to tell, and through this outreach, more people can hear it!

**\$63,000**





# LOCAL CHURCH *focus*



## Royal Family Kids

**Camp:** This five-day camp exists to create positive and life-changing moments for children who have been victims of neglect, abuse, or abandonment.

**Club:** Mentoring club exists to connect with positive and loving adults, and build lasting friendships with other mentoring club kids.



## Teen Reach Adventure Camp

**Camp:** This three-day camp exists to provide hope to at-risk teens who are, or have been, in foster care. TRAC partners after Royal Family Kids to invest in kids to see how God is part of their story, and their story matters!

**T.R.A.C.life:** This mentoring program launches in Lancaster County in 2020! It allows campers to stay connected to a safe, caring adult each month during the school year.



## Christian Heritage

Christian Heritage is a Nebraska ministry that works to fulfill the purpose of bringing hope to children and families. They offer a holistic, Christ-centered approach to caring for kids from hard places. They connect churches to come alongside families to host children and meet tangible needs. They also offer placement for children in Christian foster homes and provide programs for restoring family relationships.

**Families Together:** This is an opportunity for our church to step up and begin caring for families in crisis like never before. By providing safe, loving, temporary housing for kids at risk, we can provide the time and support bio parents sometimes need to get back on their feet and begin a new chapter in their lives. This unique program allows parents to make the choice to get help *before* the state would step in.

**Care Portal:** Connects churches to the needs of at-risk children and families in our city through child welfare workers. This awareness allows the church to meet real-time needs to help keep families together and out of the system.

# REACHING CHILDREN & FAMILIES *at risk*

**\$20,000**



# FUTURE LEADERS

*impact the world*

## Scholarships & Internship

Global Mission trips can be life changing, and we want to make sure finances are not a hindrance for young adults to participate. Scholarships are available to young adults, ages 19-30, who have never been on a global mission trip, so that they can experience God in new ways as they continue to develop their relationship and understanding of God and His mission.

## Development & Expansion Trips

We want to continue to expand our vision and reach, so we have funds designated for developing new projects and scouting out new partnerships.

## Nebraska District Campground

The Crossing is a Christian campground serving the Nebraska Assemblies of God District by helping kids and youth connect with God at week-long summer camps.

## Rwandan Student Ministry

We have a God-given opportunity to invest in over 50 of Rwanda's brightest students who call Lincoln home while studying at UNL. We are helping equip them with skills and resources to be influential for God's Kingdom when they return to Rwanda.

**\$36,000**

PRAY | GIVE | GO

# TOGETHER, WE ARE *Vision Builders*

I believe that people innately desire to be a part of something bigger than themselves. As Christ followers, God invites us to be a part of something bigger through our personal surrender to His plans. When we surrender our lives to God, it is us saying, “God, I am not enough, but I know that you are.” It is in this posture that God is able to do things in us and through us that we couldn’t do on our own.

God commissions us to be a part of something bigger than ourselves through the Great Commission found in Matthew 28. We are not only commissioned, but we are equipped because God has given us all authority, which means we are without excuse in being a part of God’s mission.

It is easy to think that the Great Commission is all about going, but it is also about being. In verse 18 it clearly states to “Go and make disciples...” but also remember verse 20 that says, “And be sure of this that I am always with you.”

“And be sure of this: I am with you always, even to the end of the age.”

**Matthew 28:20 (NLT)**

Be sure. The only way to truly live out the Great Commission is to be sure that God is with you. Be sure that He is enough. Be sure that you are a part of His bigger plan. Be sure that, through Him, you lack nothing.

My prayer for our church is that we do not just ask God what we can do for Him, but who we can be in Him. When we actively live out our identity in Christ, we can have vision beyond our means to reach people and impact places that we could never reach on our own. We have a big vision to make an impact globally, locally, and in the next generation. We know it is not just about what we do, but about who we are.

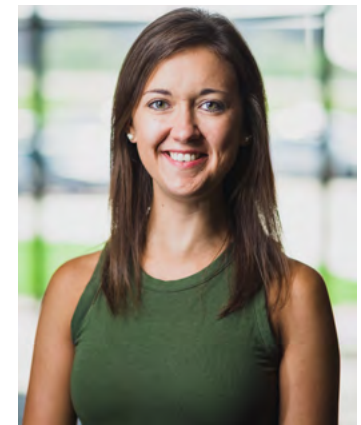
I ask that you do not miss this opportunity to be a part of something bigger than yourself as we pray, give, and go together.

**We can’t all do everything, but we can each do something.**

**PRAY** for the needs of our missionaries around the world.

**GIVE** generously through a monthly faith commitment.

**GO** on a global trip this year or serve at risk children and families in our community.



**Ashley Woodman**  
*Missions Pastor*  
awoodman@christplace.church

# PLAN VISION DREAM

*how much to give*

For some of us this is new... how do I give above and beyond what I'm already giving?

**Plan:** Look at your income and expenses and determine an amount you can give each month. But don't stop there.

**Vision:** View your Vision Builders commitment through the lens of faith. Stretch your plan by adding a faith factor. This is your vision or your faith commitment.

**Dream:** Believe God wants to blow your mind with what He is capable of. Ask Him for a God-sized dream - it's between you and God, so hold it close to your heart. That is until God does it. Then it becomes a story of God's greatness and glory.

2020 GOAL: **\$575,000**

PRAY | GIVE | GO

# I AM A VISION BUILDER

**PRAY** for the needs of our missionaries around the world.

**GIVE** generously through my monthly faith commitment.

**GO** on a global trip or serve in my community.



COORDINACIÓN  
Comunidad

VISION  
*Builders*  
2020