





IMMEDIATELY



HE>i



#2NDMILE



PHARI>SEE



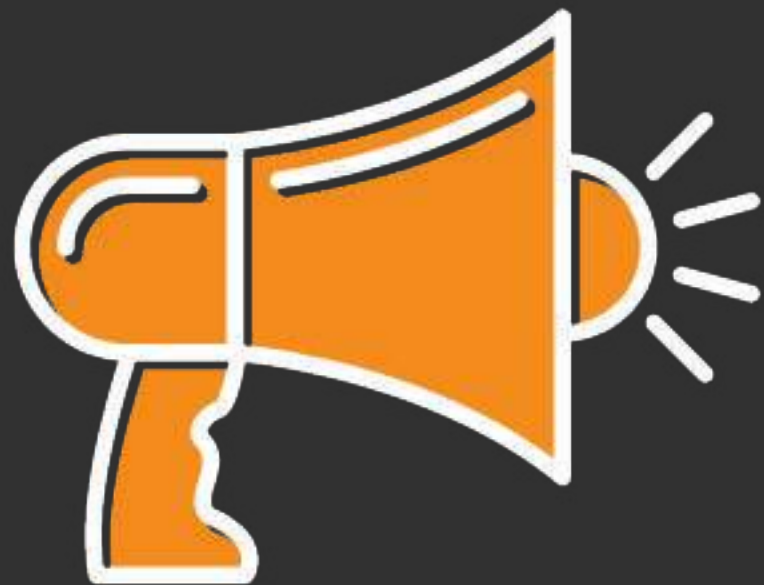
RESTORE



TWELVE

A black and white photograph of a person's hand held up in a 'stop' gesture, with the word 'REJECTION' overlaid in large white letters. The background is a blurred image of the person's face and upper body, suggesting a sense of being blocked or denied. The lighting is dramatic, highlighting the texture of the hand and the sharp edges of the text.

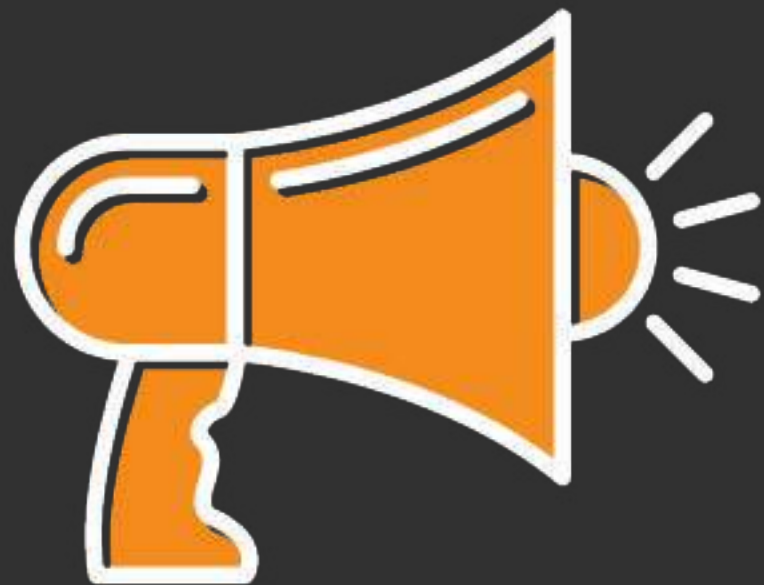
**REJECTION**



**OPINIONS  
CRITICISM  
JUDGMENT  
FEEDBACK**

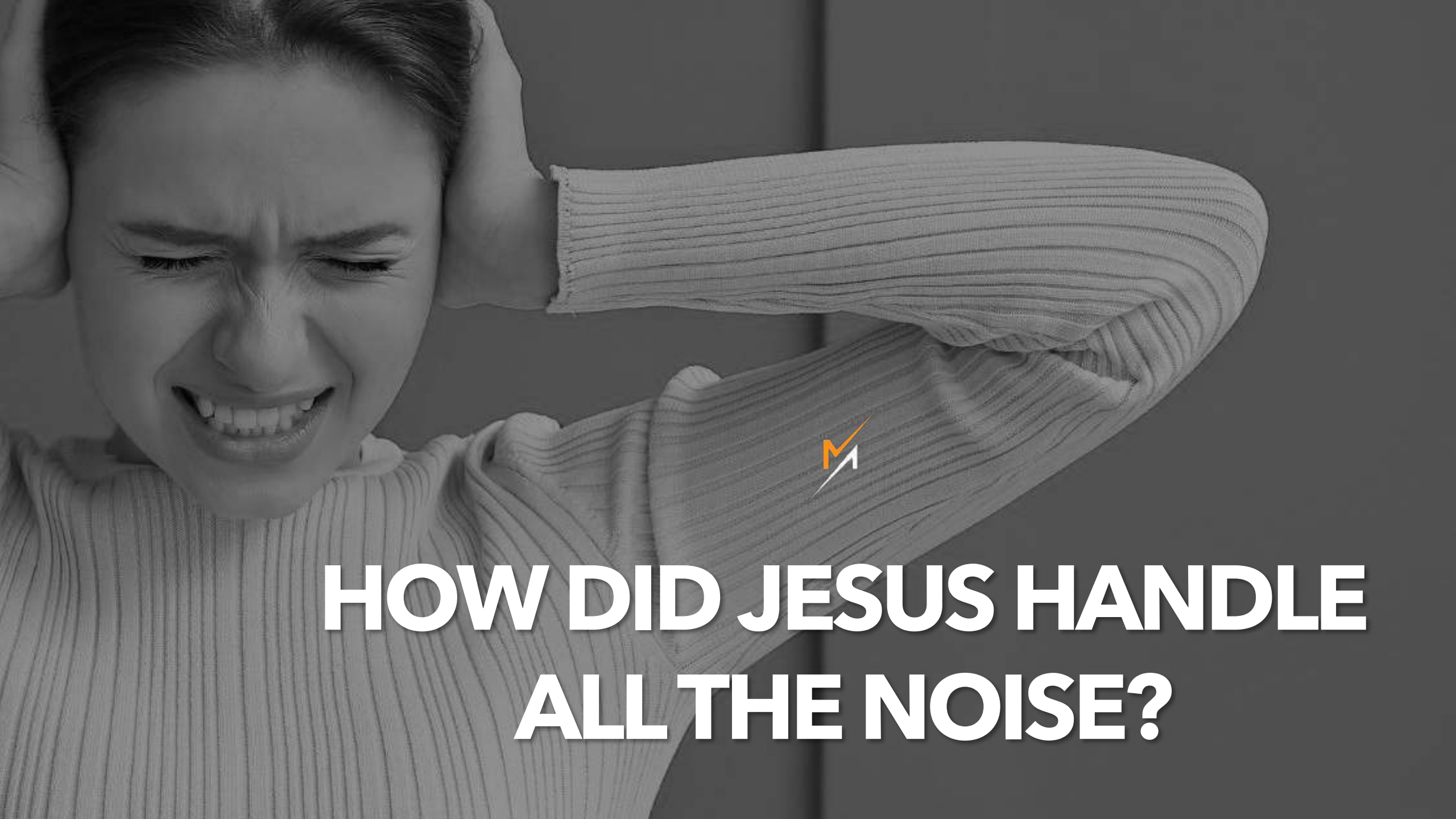






**OPINIONS  
CRITICISM  
JUDGMENT  
FEEDBACK**





**HOW DID JESUS HANDLE  
ALL THE NOISE?**



**GOSPEL OF**  
**MARK**  
**3:20-35**





**SCENE 1**

**SCENE 2**

**SCENE 1 CONT'D**



SCENE 1

SCENE 2

SCENE 1 CONT'D



**SCENE 1**

**SCENE 2**

**SCENE 1 CONT'D**



# JESUS & FAMILY

MARK 3:20-21

# JESUS & SCRIBES

MARK 3:22-30

# JESUS & FAMILY

MARK 3:31-35



**JESUS & FAMILY**

MARK 3:20-21

**JESUS & SCRIBES**

MARK 3:22-30

**JESUS & FAMILY**

MARK 3:31-35



# JESUS & FAMILY

MARK 3:20-21

# JESUS & SCRIBES

MARK 3:22-30

# JESUS & FAMILY

MARK 3:31-35

Then he went home, and the crowd gathered again, so that they could not even eat.



And when his family heard it,  
they went out to seize him, for  
they were saying, "He is out of  
his mind."







**REJECTED**

**"YOU'RE OUT OF YOUR MIND"**



# REJECTED

"Not even his brothers believed in him..."

**JOHN 7:5**



**JESUS & FAMILY**

MARK 3:20-21

**JESUS & SCRIBES**

MARK 3:22-30

**JESUS & FAMILY**

MARK 3:31-35

And the scribes who came down from Jerusalem were saying, "He is possessed by Beelzebul," and "by the prince of demons he casts out the demons."





“He is **possessed** by Beelzebub”





“He is **possessed** by Beelzebub”

“By the prince of demons **he casts out** the demons”





# REJECTED

**"YOU'RE A PARTNER OF SATAN"**



**REJECTED**  
**BY FAMILY**

 *"You're out of your mind"*

**REJECTED**  
**BY SCRIBES**

 *"You're a partner of Satan"*





**JESUS & FAMILY**

MARK 3:20-21

**JESUS & SCRIBES**

MARK 3:22-30

**JESUS & FAMILY**

MARK 3:31-35

And he called them to him and  
said to them in parables...





# REJECTED

**"YOU'RE A PARTNER OF SATAN"**

**WHY WOULD SATAN WORK AGAINST HIMSELF?** (vv. 23-26)

**I'M OVERCOMING SATAN, NOT WORKING WITH HIM!** (v. 27)

**YOU'RE GUILTY OF AN UNPARDONABLE SIN!** (vv. 28-30)

“How can Satan cast out Satan?  
If a kingdom is divided against  
itself, that kingdom cannot  
stand. And if a house is divided  
against itself, that house will not  
be able to stand.



And if Satan has risen up  
against himself and is divided,  
he cannot stand, but is coming  
to an end.





# REJECTED

**"YOU'RE A PARTNER OF SATAN"**

**WHY WOULD SATAN WORK AGAINST HIMSELF?** (vv. 23-26)

**I'M OVERCOMING SATAN, NOT WORKING WITH HIM!** (v. 27)

**YOU'RE GUILTY OF AN UNPARDONABLE SIN!** (vv. 28-30)

But no one can enter a strong man's house and plunder his goods, unless he first binds the strong man. Then indeed he may plunder his house.





# REJECTED

**"YOU'RE A PARTNER OF SATAN"**

**WHY WOULD SATAN WORK AGAINST HIMSELF? (vv. 23-26)**

**I'M OVERCOMING SATAN, NOT WORKING WITH HIM! (v. 27)**

**YOU'RE GUILTY OF AN UNPARDONABLE SIN! (vv. 28-30)**



“Truly, I say to you, all sins will be forgiven the children of man, and whatever blasphemies they utter,



but whoever blasphemes  
against the Holy Spirit never  
has forgiveness, but is guilty  
of an eternal sin"—



for they were saying, "He has  
an unclean spirit."



A person with long dark hair is sitting on the floor in a dark room, covering their face with their hands. They are wearing a dark long-sleeved shirt and dark pants. The room is dimly lit, with light coming from a window in the background, which is partially covered by dark curtains. The overall mood is one of despair or shame.

# UNPARDONABLE SIN

A person with long dark hair is standing in a dark room, covering their face with both hands. They are wearing a dark long-sleeved top and dark pants. The background is dark with some light filtering through, possibly from a window. The overall mood is somber and reflective.

# UNPARDONABLE SIN

**WHAT IS THE SIN?**

**WHO IS THE SIN AGAINST?**

**WHAT ARE THE CONSEQUENCES OF THE SIN?**

**WHO CAN COMMIT THE SIN?**

A person is kneeling on a wooden floor in a room with dark curtains and a window in the background. They are wearing a dark long-sleeved top and blue pants. Their hands are covering their face, suggesting a state of prayer, distress, or shame. The lighting is soft, coming from the window behind them.

# WHAT IS THE SIN?

Whoever **blasphemes**...

**UNPARDONABLE**  
**SIN**



# UNPARDONABLE SIN

**WHAT IS THE SIN?**

**WHO IS THE SIN AGAINST?**

**WHAT ARE THE CONSEQUENCES OF THE SIN?**

**WHO CAN COMMIT THE SIN?**

A person with long dark hair is kneeling on a wooden floor, facing away from the camera. They have their hands pressed against their face, suggesting a state of prayer, distress, or grief. The background is a bright window with sheer curtains, and the room is dimly lit, with light coming from the window.

# WHO IS THE SIN AGAINST?

Whoever blasphemes **against the Holy Spirit...**

**UNPARDONABLE  
SIN**



A person with long dark hair is shown from the waist up, standing in a room with light-colored curtains. They have their hands pressed against their face, covering their eyes and nose, suggesting a state of deep shame, grief, or despair. The lighting is soft, coming from behind them, creating a silhouette effect against the curtains.

# **UNPARDONABLE** **SIN**

**WHAT IS THE SIN?**

**WHO IS THE SIN AGAINST?**

**WHAT ARE THE CONSEQUENCES OF THE SIN?**

**WHO CAN COMMIT THE SIN?**

# WHAT ARE THE CONSEQUENCES?

*Whoever blasphemes against the Holy Spirit  
**never** has forgiveness, but is guilty of an  
**eternal** sin...*

**UNPARDONABLE  
SIN**

A person with long dark hair is shown from the waist up, standing in a dimly lit room. They are covering their face with both hands, suggesting a state of shame, grief, or despair. The background is dark with some light filtering through, possibly from a window. The overall mood is somber and reflective.

# **UNPARDONABLE** **SIN**

**WHAT IS THE SIN?**

**WHO IS THE SIN AGAINST?**

**WHAT ARE THE CONSEQUENCES OF THE SIN?**

**WHO CAN COMMIT THE SIN?**

# WHO CAN COMMIT THE SIN?

*Whoever blasphemes against the Holy Spirit never has forgiveness, but is guilty of an eternal sin—for **they** were saying, “He has an unclean spirit.”*

**UNPARDONABLE  
SIN**

# WHO CAN COMMIT THE SIN?

**Whoever** blasphemes against the Holy Spirit never has forgiveness, but is guilty of an eternal sin—for **they** were saying, “He has an unclean spirit.”

UNPARDONABLE  
SIN

A person with long dark hair is kneeling on a dark floor, their face buried in their hands. They are wearing a dark long-sleeved top and dark pants. The background is a window with sheer white curtains, and the room is dimly lit, with light coming from the window. The overall mood is one of despair or guilt.

*Can I commit the **Unpardonable Sin**?*  
*Have I committed the **Unpardonable Sin**?*

**UNPARDONABLE**  
**SIN**

# Can Believers Commit the **Unpardonable Sin**?

1. If you reject the Holy Spirit's witness about Jesus, you will not find forgiveness elsewhere.
2. By definition, believers are people who do accept the Holy Spirit's witness about Jesus.
3. This warning about an "unpardonable sin" is not for believers, but for those who reject the Holy Spirit's witness.

**UNPARDONABLE  
SIN**



# **Can Believers Commit the *Unpardonable Sin*?**

- 1. If you reject the Holy Spirit's witness about Jesus, you will not find forgiveness elsewhere.**
- 2. By definition, believers are people who do accept the Holy Spirit's witness about Jesus.**
- 3. This warning about an "unpardonable sin" is not for believers, but for those who reject the Holy Spirit's witness.**

**UNPARDONABLE  
SIN**





# **Can Believers Commit the *Unpardonable Sin*?**

- 1. If you reject the Holy Spirit's witness about Jesus, you will not find forgiveness elsewhere.**
- 2. By definition, believers are people who do accept the Holy Spirit's witness about Jesus.**
- 3. This warning about an "unpardonable sin" is not for believers, but for those who reject the Holy Spirit's witness.**

**UNPARDONABLE  
SIN**



# REJECTED

**"YOU'RE A PARTNER OF SATAN"**

**WHY WOULD SATAN WORK AGAINST HIMSELF? (vv. 23-26)**

**I'M OVERCOMING SATAN, NOT WORKING WITH HIM! (v. 27)**

**YOU'RE GUILTY OF AN UNPARDONABLE SIN! (vv. 28-30)**



# JESUS & FAMILY

MARK 3:20-21

# JESUS & SCRIBES

MARK 3:22-30

# JESUS & FAMILY

MARK 3:31-35



**REJECTED**

**"YOU'RE OUT OF YOUR MIND"**

And his mother and his  
brothers came, and standing  
outside they sent to him and  
called him.



And a crowd was sitting around him, and they said to him, "Your mother and your brothers are outside, seeking you."



And he answered them, "Who are my mother and my brothers?"



And looking about at those  
who sat around him, he said,  
"Here are my mother and my  
brothers!





For whoever does the will of  
God, he is my brother and  
sister and mother."





# REJECTED

**"YOU'RE OUT OF YOUR MIND"**

**THOSE WHO DO GOD'S WILL ARE MY TRUE FAMILY (vv. 31-35)**



# JESUS & FAMILY

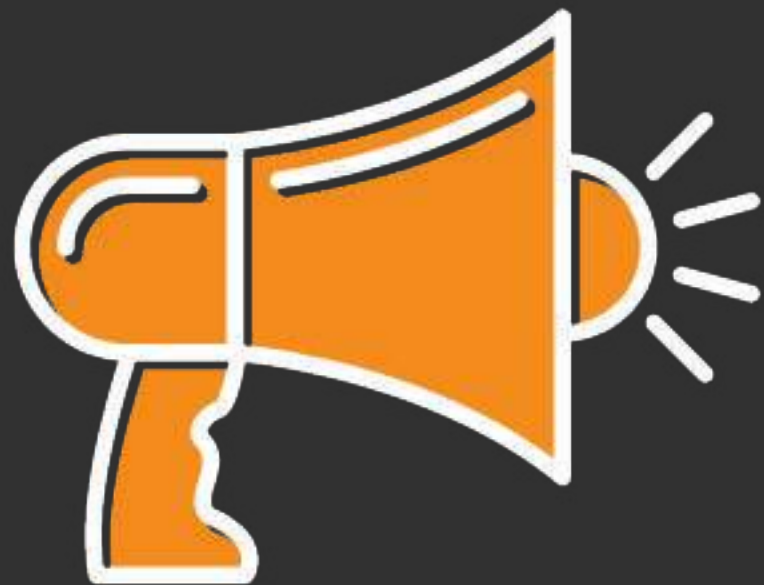
MARK 3:20-21

# JESUS & SCRIBES

MARK 3:22-30

# JESUS & FAMILY

MARK 3:31-35



**OPINIONS  
CRITICISM  
JUDGMENT  
FEEDBACK**



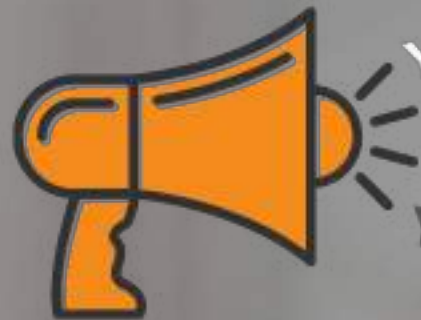


**CANCEL THE NOISE**



**VOICE 1**  
**WHAT DOES**  
**GOD SAY?**





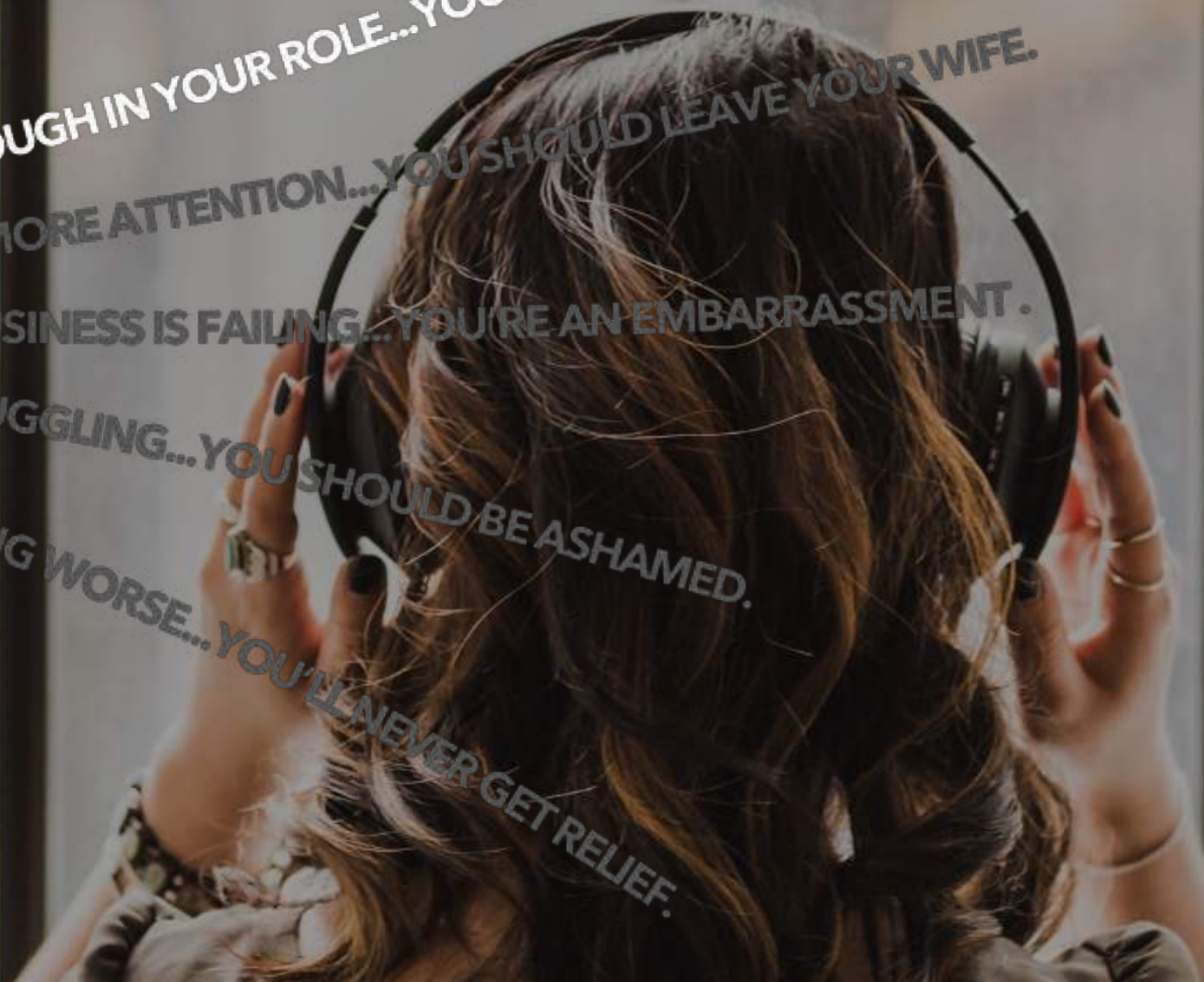
YOU'RE NOT GOOD ENOUGH IN YOUR ROLE... YOU SHOULD QUIT SERVING.

YOU DESERVE MORE ATTENTION... YOU SHOULD LEAVE YOUR WIFE.

YOUR BUSINESS IS FAILING... YOU'RE AN EMBARRASSMENT.

YOUR KIDS ARE STRUGGLING... YOU SHOULD BE ASHAMED.

YOUR ANXIETY IS GETTING WORSE... YOU'LL NEVER GET RELIEF.



**GOD SAYS TO DEPEND ON  
HIM WHEN I FEEL WEAK.**

**2 Cor 1:9** *We stopped relying  
on ourselves and learned to  
rely only on God.*







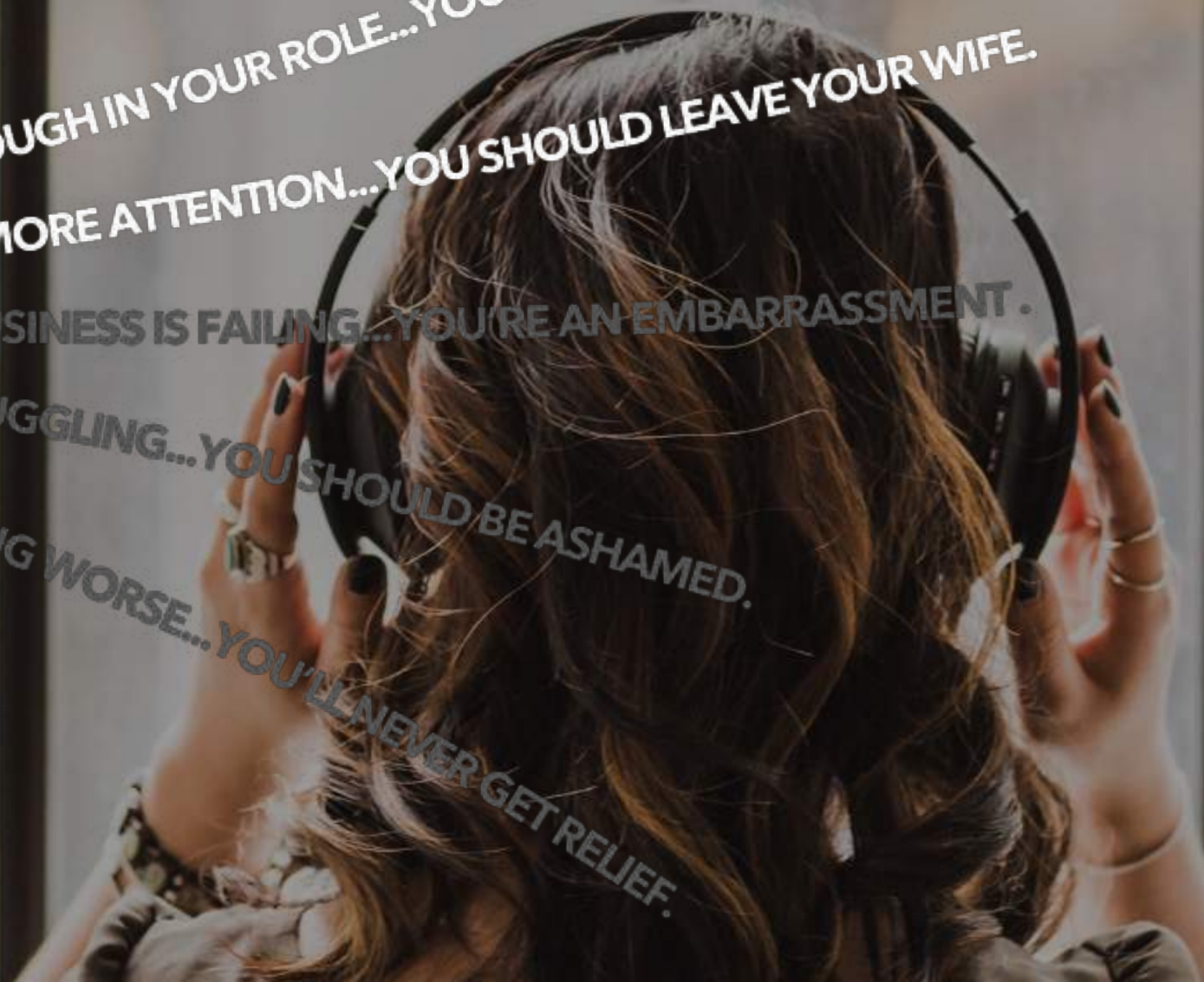
YOU'RE NOT GOOD ENOUGH IN YOUR ROLE... YOU SHOULD QUIT SERVING.  
YOU DESERVE MORE ATTENTION... YOU SHOULD LEAVE YOUR WIFE.

**2 COR 1:9**

YOUR BUSINESS IS FAILING... YOU'RE AN EMBARRASSMENT.

YOUR KIDS ARE STRUGGLING... YOU SHOULD BE ASHAMED.

YOUR ANXIETY IS GETTING WORSE... YOU'LL NEVER GET RELIEF.



# GOD SAYS TO LOVE MY WIFE UNCONDITIONALLY.

***Eph 5:25*** *Husbands love your wives just as Christ loved the church.*





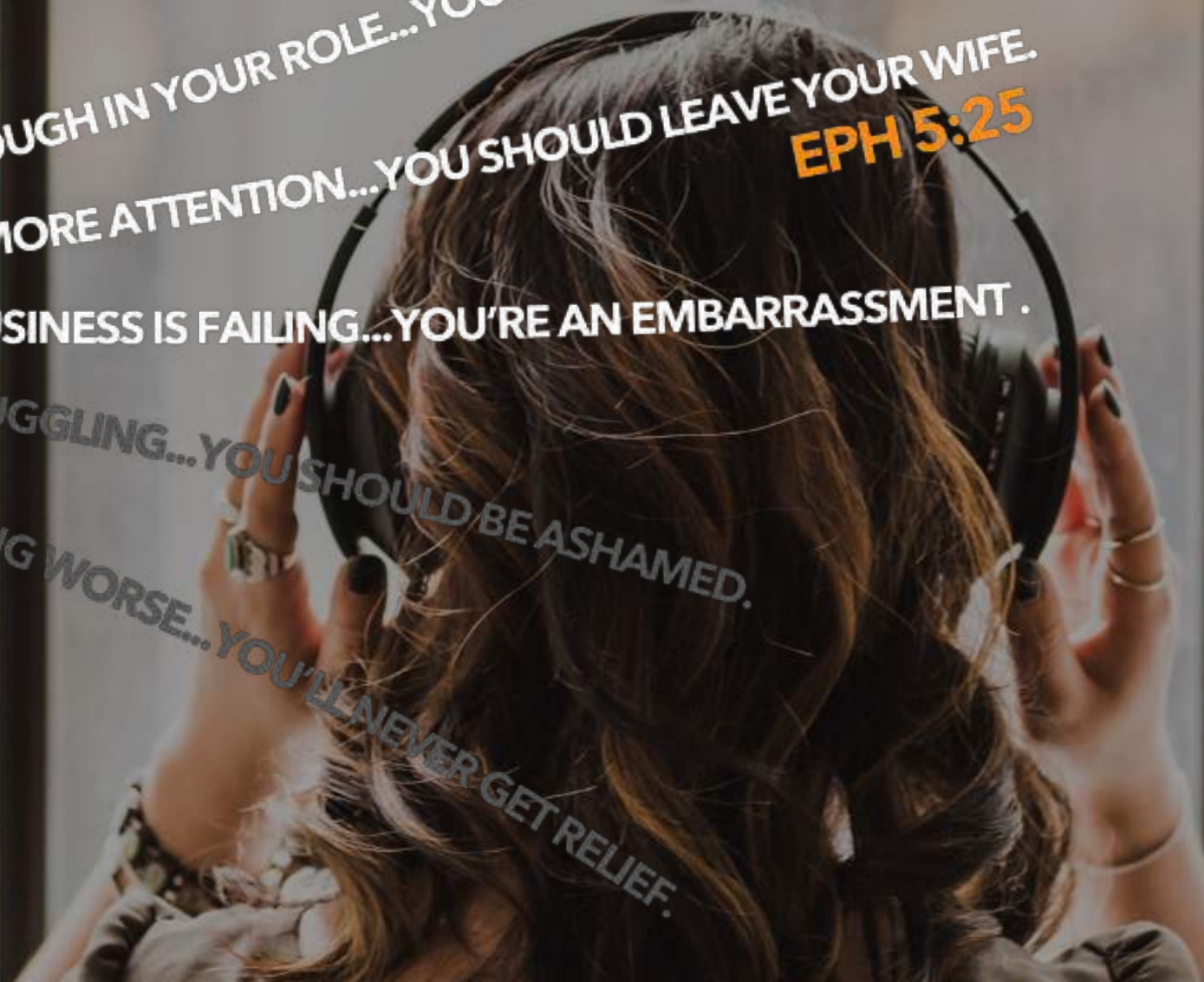
YOU'RE NOT GOOD ENOUGH IN YOUR ROLE... YOU SHOULD QUIT SERVING.  
2 COR 1:9

YOU DESERVE MORE ATTENTION... YOU SHOULD LEAVE YOUR WIFE.  
EPH 5:25

YOUR BUSINESS IS FAILING... YOU'RE AN EMBARRASSMENT .

YOUR KIDS ARE STRUGGLING... YOU SHOULD BE ASHAMED.

YOUR ANXIETY IS GETTING WORSE... YOU'LL NEVER GET RELIEF.



# GOD SAYS I'M A DEARLY LOVED CHILD.

**1 John 3:1** *See how very  
much our Father loves us, for  
he calls us his children and  
that is what we are.*





YOU'RE NOT GOOD ENOUGH IN YOUR ROLE... YOU SHOULD QUIT SERVING.  
2 COR 1:9

YOU DESERVE MORE ATTENTION... YOU SHOULD LEAVE YOUR WIFE.  
EPH 5:25

YOUR BUSINESS IS FAILING... YOU'RE AN EMBARRASSMENT .

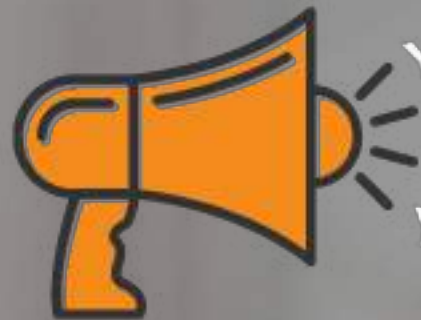
YOUR KIDS ARE STRUGGLING... YOU SHOULD BE ASHAMED.  
1 JN 3:1

YOUR ANXIETY IS GETTING WORSE... YOU'LL NEVER GET RELIEF.

**GOD SAYS I DON'T HAVE TO  
BE ASHAMED ANYMORE.**

**Rom 8:1** *Now there is no  
condemnation for those who  
belong to Christ Jesus.*





YOU'RE NOT GOOD ENOUGH IN YOUR ROLE... YOU SHOULD QUIT SERVING.  
**2 COR 1:9**

YOU DESERVE MORE ATTENTION... YOU SHOULD LEAVE YOUR WIFE.  
**EPH 5:25**

YOUR BUSINESS IS FAILING... YOU'RE AN EMBARRASSMENT.

**1 JN 3:1**

YOUR KIDS ARE STRUGGLING... YOU SHOULD BE ASHAMED.

**ROM 8:1**

YOUR ANXIETY IS GETTING WORSE... YOU'LL NEVER GET RELIEF.

# GOD SAYS I DON'T HAVE TO BE AFRAID.

**2Tim 1:7** *God has not given you a spirit of fear, but of power, love, and a sound mind.*





**VOICE 1**

**WHAT DOES  
GOD SAY?**



**VOICE 2**

**WHAT DOES  
THE FAMILY  
OF GOD SAY?**

YOU'RE NOT GOOD ENOUGH IN YOUR ROLE... YOU SHOULD QUIT SERVING.

YOU DESERVE MORE ATTENTION... YOU SHOULD LEAVE YOUR WIFE.

YOUR BUSINESS IS FAILING... YOU'RE AN EMBARRASSMENT.

YOUR KIDS ARE STRUGGLING... YOU SHOULD BE ASHAMED.

YOUR ANXIETY IS GETTING WORSE... YOU'LL NEVER GET RELIEF.



**VOICE 1**

**WHAT DOES  
GOD SAY?**



**VOICE 2**

**WHAT DOES  
THE FAMILY  
OF GOD SAY?**

