

THE  
INFINITE VALUE  

---

OF A SOUL

*LUKE 15:1-7*

---

#LOADEDSTORIES

***“Many dishonest tax collectors and other notorious sinners often gathered around to listen as Jesus taught the people.”***

***(Luke 15:1 TPT)***

#LOADEDSTORIES

**WAS JESUS**  
**A TAX-COLLECTOR?**  
**OR A NOTORIOUS SINNER?**

**#LOADEDSTORIES**

A lit candle is the central focus, with a bright flame at the top. The background is dark with several butterflies in various colors (white, yellow, brown) and small white particles or petals falling around the candle. The text is overlaid in white, bold, sans-serif font.

IS IT INTERESTING THAT PEOPLE  
WHO WERE NOTHING LIKE JESUS  
ENJOYED LISTENING TO JESUS?

#LOADEDSTORIES

**LEVEL 5**

**LEVEL 5 EXECUTIVE**

Builds enduring greatness through a paradoxical blend of personal humility and professional will.

**LEVEL 4**

**EFFECTIVE LEADER**

Catalyzes commitment to and vigorous pursuit of a clear and compelling vision, stimulating higher performance standards.

**LEVEL 3**

**COMPETENT MANAGER**

Organizes people and resources toward the effective and efficient pursuit of predetermined objectives.

**LEVEL 2**

**CONTRIBUTING TEAM MEMBER**

Contributes individual capabilities to the achievement of group objectives and works effectively with others in a group setting.

**LEVEL 1**

**HIGHLY CAPABLE INDIVIDUAL**

Makes productive contributions through talent, knowledge, skills, and good work habits.

**A LEVEL 4 DOESN'T  
COME UNDER  
A LEVEL 5.**

**THE ONLY WAY TO  
LEAD LEVEL 1-4  
IS TO  
BECOME A LEVEL 5.**

**#LOADEDSTORIES**

GOD

Consciousness

Awareness

Character

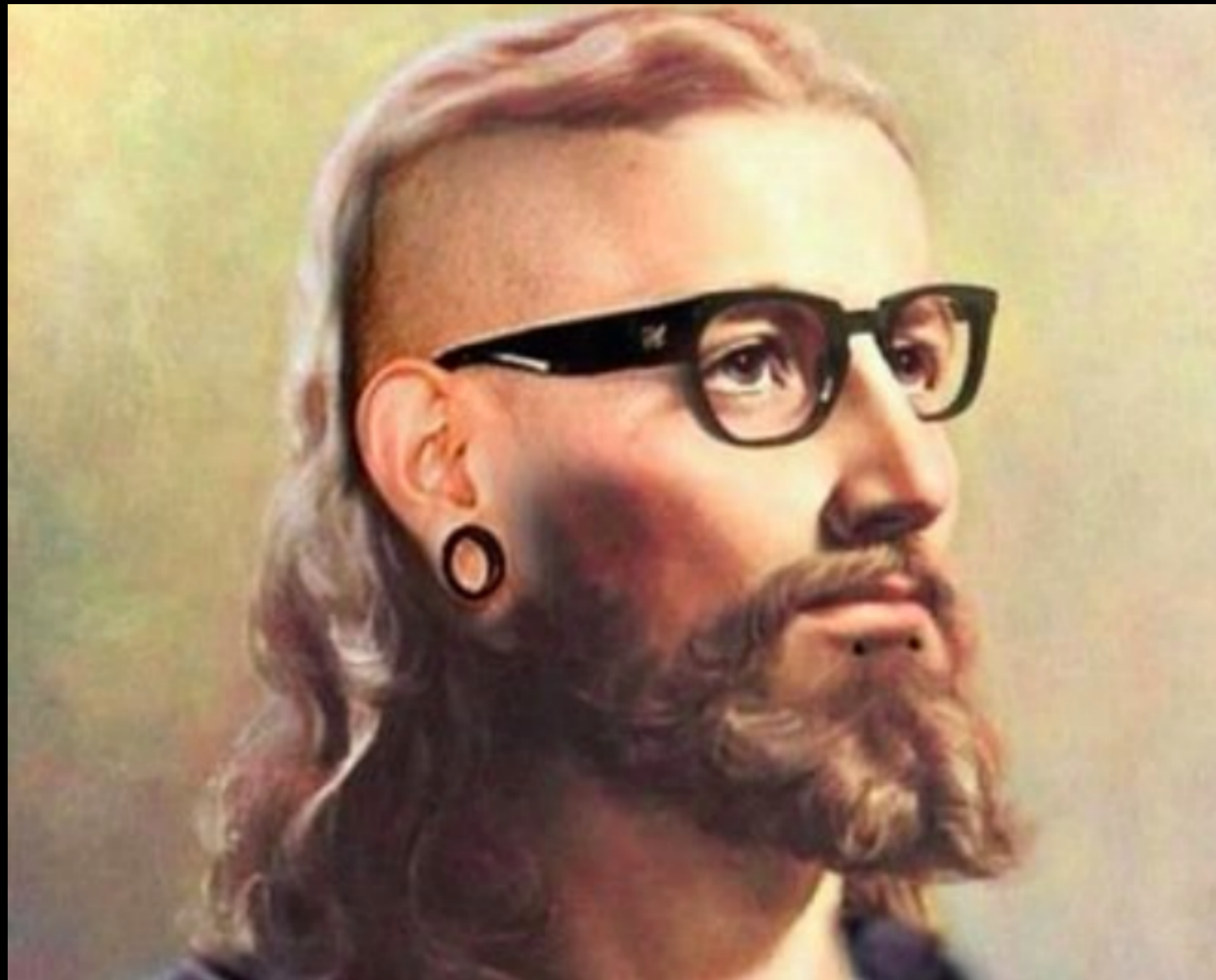
Influence

Alignment

IF WE WANT TO INFLUENCE THOSE WHO ARE FAR FROM GOD (*IN AWARENESS AND LIFESTYLE*), WE HAVE TO CLOSER TO GOD (*IN AWARENESS AND LIFESTYLE*).

#LOADEDSTORIES

# NOT BECAUSE HE WAS HIPSTER JESUS



#LOADEDSTORIES

THE MORE A CHURCH BECOMES LIKE  
JESUS, THE MORE INFLUENCE WE CAN  
HAVE WITH PEOPLE NOTHING LIKE JESUS.

#LOADEDSTORIES



***"This raised concerns with the Jewish religious leaders and experts of the law. Indignant, they grumbled and complained, saying, 'Look at how this man associates with all these notorious sinners and welcomes them all to come to him!'"***

***(Luke 15:2 TPT)***

#LOADEDSTORIES

SIN IS HURTING THOSE AROUND YOU (THE  
COMMUNITY) WHILE SERVING YOURSELF.

RIGHTEOUSNESS IS CARING FOR THE  
GREATER GOOD ABOVE YOUR CURRENT  
MOOD.

#LOADEDSTORIES

"WHY WOULD WE WANT TO HURT THOSE  
AROUND US?"

WE ARE *IMMATURE*.

WE ARE HURTING.

\* *I'M SURE THERE ARE OTHER ANSWERS...*

#LOADEDSTORIES

**SINNERS: ARE THEY THE CANCER OR DO  
THEY HAVE CANCER?**

**\* CANCER AS A METAPHOR (NOT LITERAL)**

**#LOADEDSTORIES**

IN LUKE 15, JESUS SHARES 3 STORIES WITH ONE MAIN MESSAGE

**We should ALL be about  
PURSUING those who are LOST  
and when they are RESTORED  
our response ought to be  
GREAT JOY.**

#LOADEDSTORIES

***“this man associates with (means: brings into companionship) all these notorious sinners...” (Luke 15:2 TPT)***

**#LOADEDSTORIES**

JESUS WENT ABOUT DEALING WITH  
SINNERS RELATIONALLY, WHILE THE  
RELIGIOUS COMMUNITY WENT ABOUT IT  
VERY IMPERSONALLY AND INSTITUTIONALLY.

#LOADEDSTORIES

PEOPLE  
GROW UP  
+  
HEAL UP  
IN  
SAFE RELATIONSHIPS.

#LOADEDSTORIES



# JC GROUPS + TRACKS

[JESUSCENTER.COM/GROUPS.](https://jesuscenter.com/groups)  
[JESUSCENTER.COM/TRACKS.](https://jesuscenter.com/tracks)



## JC TRACKS

# ●● FRESH START

Sundays @ 1 pm - 2pm



●  
KNOW  
GOD  
**10/21**

●●  
FIND  
FREEDOM  
**10/28**

●●●  
DISCOVER  
PURPOSE  
**11/4**

●●●●  
MAKE A  
DIFFERENCE  
**11/11**

**THE WAY JESUS OPERATED...  
YOU DID NOT HAVE TO  
BEHAVE TO BELONG.**

**#LOADEDSTORIES**

***SOMETIMES...* PARADIGMS SHIFT IN  
THE CONTEXT OF  
RELATIONSHIP.**

**#LOADEDSTORIES**

***This raised concerns with the Jewish religious leaders and experts of the law. Indignant, they grumbled and complained, saying, ‘Look at how this man associates with all these notorious sinners and welcomes them all to come to him! (Luke 15:2 TPT)***

***“In response, Jesus gave them this illustration:...” (Luke 15:3a TPT)***

#LOADEDSTORIES

## *LUKE 5:30-32*

But the Pharisees and their scribes complained to Jesus' disciples, "Why do you eat and drink with tax collectors and sinners?"

**31** Jesus answered, "It is not the healthy who need a doctor, but the sick.

**32** I have not come to call the righteous, but sinners, to repentance."

# PHASES OF CHURCH

\* *WHAT IS THE BIGGEST FACTOR.*

0-200: PASTOR

200-500: STAFF

500-1000: SYSTEMS

*“There once was a shepherd with a hundred lambs, but one of his lambs wandered away and was lost. So the shepherd left the ninety-nine lambs out in the open field and searched in the wilderness for that **ONE LOST LAMB**. He didn’t stop until he finally found it.”*  
*(Luke 15:4-5 TPT)*

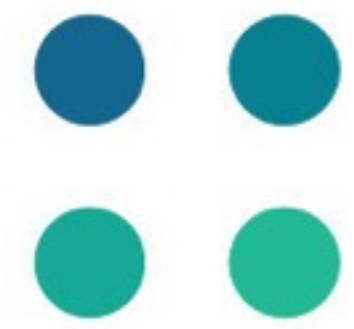
#LOADEDSTORIES

DOES ONE SOUL  
HAVE INFINITE VALUE?

*OR DO THEY HAVE A PRICE?*

#LOADEDSTORIES





# FRESH START



●  
KNOW  
GOD

● ●  
FIND  
FREEDOM

● ● ●  
DISCOVER  
PURPOSE

● ● ● ●  
MAKE A  
DIFFERENCE

#LOADEDSTORIES

DID YOU KNOW...  
**SHEPHERDS  
WERE NOT  
RESPECTED.**

**#LOADEDSTORIES**



**He didn't stop until he finally found it.” Luke 15:5**

**We should be**

**persistent,**

**tenacious,**

**And**

**relentless**

**in trying to help people**

**who have lost their way, to find their way.**

**#LOADEDSTORIES**

LEADERS WORK WHILE  
OTHERS SLEEP.

**The more like God we become,  
we become shepherds,  
not just sheep.**

#LOADEDSTORIES

**“With exuberant joy he raised it up and placed it on his shoulders, carrying it back with cheerful delight!  
6 Returning home, he called all his friends and neighbors together and said, ‘Let’s have a party! Come and celebrate with me the return of my lost lamb. It wandered away, but I found it and brought it home.’” (Luke 15:5-6 TPT)**

**#LOADEDSTORIES**

**The Shepherd carried  
the sheep because  
maybe the sheep was  
too exhausted to  
make it back on his  
own.**

**#LOADEDSTORIES**





**The sheep was in a scary**

**place:**

- 1)Not knowing where to get food.
- 2)Not able to protect himself.
- 3)Not about to fulfill purpose anymore.
- 4)Not cared for by anyone *else*.

#LOADEDSTORIES



**However, due to the shepherds  
commitment, the sheep in now  
in a place he can:**

- 1) Be Fed.
- 2) Be Protected.
- 3) Fulfill purpose.
- 4) Be Cared About.

**#LOADEDSTORIES**

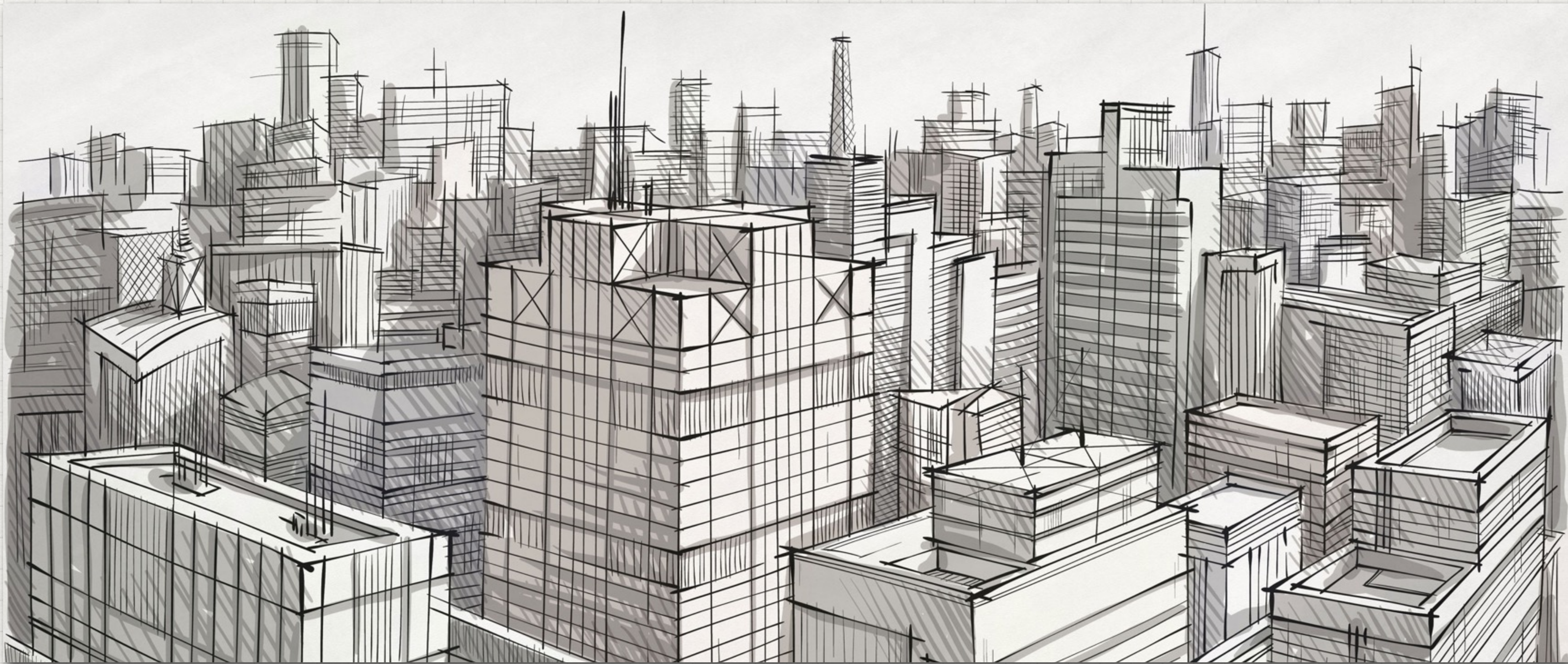




## **Humans thrive when we can:**

- 1) Be Fed.
- 2) Be Protected.
- 3) Fulfill purpose.
- 4) Be Cared About.

#LOADEDSTORIES



**Jesus continued, “In the same way, there will be a glorious celebration in heaven over the rescue of one lost sinner who repents, comes back home, and returns to the fold—more so than for all the righteous people who never strayed away.” (Luke 15:7 TPT)**

**#LOADEDSTORIES**

IF WE WANT TO SEE HEAVEN INVADE EARTH, WE NEED TO SYNC WITH HEAVEN'S:

priorities.

passion.

pursuit.

=

SOULS

And we will be able to release....

Heaven's power.

=

Salvations

And we will experience...

Heaven's pleasure.

#LOADEDSTORIES

# HOW DOES HEAVEN INVADE EARTH?



#LOADEDSTORIES