



# Welcome



## Opening Song

*“Come Thou Long-Expected Jesus”*

## Invocation, Confession & Absolution

## Song of Praise

*“What A Beautiful Name”*

## Children’s Message

## Reading of the Word

Genesis 18:1-10  
Colossians 1:21-29  
Luke 10:38-42

## Sermon

## Offering

## The Apostles’ Creed

## Communion

*We receive the Lord’s Supper with the glad confidence that Jesus’ body and blood is ‘Given and shed for you for the forgiveness of sins’ in, with, and under the bread and wine of Holy Communion. Our Lord invites to His table baptized Christians who trust His words, repent of all sin, and set aside any refusal to forgive and love as He forgives and loves us. Gluten-free wafers are available by request. Alcohol-free wine is provided at the center of the tray of individual cups.*

**Distribution Songs: There is Power, Jesus Messiah**

## Prayers of the Church & The Lord’s Prayer

Please remember in your prayers: Donald Warren, Lyndsey Schwede, Jerry Peters,  
Penny Saunders, Parker Waldrop, Paula McMinn, Tim Meeks, Paul Kugler, Jessica Ladd, Pat Moore,  
Nevaeh Gilliam, Jordis Watkins, Michelle Waters, Gary Lane, Landon Schumacher, Mo Hudson,  
Mary Tidwell, Joyce Evans, Liz DeMik and The Family of Melvin Walther

Praying for Hope’s friends & family

Perez– Eric & Heather, Elyse, Lyla  
Piepkorn– Peter & Melissa, Koen, Gage, Teague, Mia  
Pittock– Travis & Stephanie

## Benediction

## Closing Song

*“My Lighthouse”*

**7.20.2025**

**8:30 a.m.**

**11:00 a.m.**



**GROW • UNITE • SERVE • SHARE**

**HOPE LUTHERAN**  
**Church & School**

**5700 98th Street, Lubbock, TX 79424**  
**hopelubbock.com • (806) 798-2747**



## Welcome! We want to know you're here!

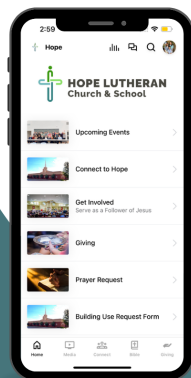
Thank you for coming to Hope Lutheran Church & School. Scan the QR code to get connected to the church or fill out an attendance card located on the backs of the chairs to place in the offering plate. Visit [hopelubbock.com](http://hopelubbock.com) for all information about Hope!



If you would like to be added to Hope's email list and receive updates on events and Hope news, please email Laura at [ltruelock@hopelubbock.com](mailto:ltruelock@hopelubbock.com)

Opportunities to Grow in Faith continue during our bible study hour Sunday mornings at 9:45am for all ages.

\*Childcare is available Sunday mornings through worship and Bible study for children age 0-3 years.



[hopelubbock.com](http://hopelubbock.com)

## Download Our App

Access Sermon's & Devotions  
In App Bible  
Group Communication  
Easy Online Giving  
Prayer Requests  
Calendar of Events

Download Now



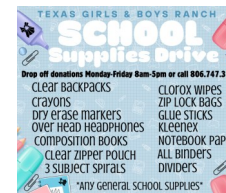
Download our app and also grab information on how to set up giving and how to join groups from the welcome desk!

We will be using the app for communication and encourage youth and adults to download today and join groups that pertain to you!

If you lead a group you are open to use the app for communication and messaging! Let the church office know you want a group today!



We have received some inquiries regarding giving to disaster relief for the Kerrville area. The Texas District Emergency Management team has created a fund for the area. If you would like to donate to the district's disaster relief efforts, you may click on "Support Disaster Relief" here: <https://txlcms.org/donate/> 100% of donations are used for victims of disaster.



The Texas Girls and Boys ranch has asked Hope to help them with back to school supplies for the children at their group homes. We will collect school supplies through August 10th. Please see the list to the left for needed items! All other school supplies are appreciated! Supplies can be set behind the welcome desk. We have also set up an amazon list that can be ordered from! Scan the QR code to order on amazon and have supplies shipped directly to the church!



If you have any empty ink cartridges, the church could use them to receive rewards to purchase copy paper! Empty ink cartridges can be dropped off at the welcome desk.

No matter how we break it down, we can't do it without You!

2024-2025 Giving Goal: \$580,000

Needed Weekly: \$11,153

Needed Monthly: \$48,333