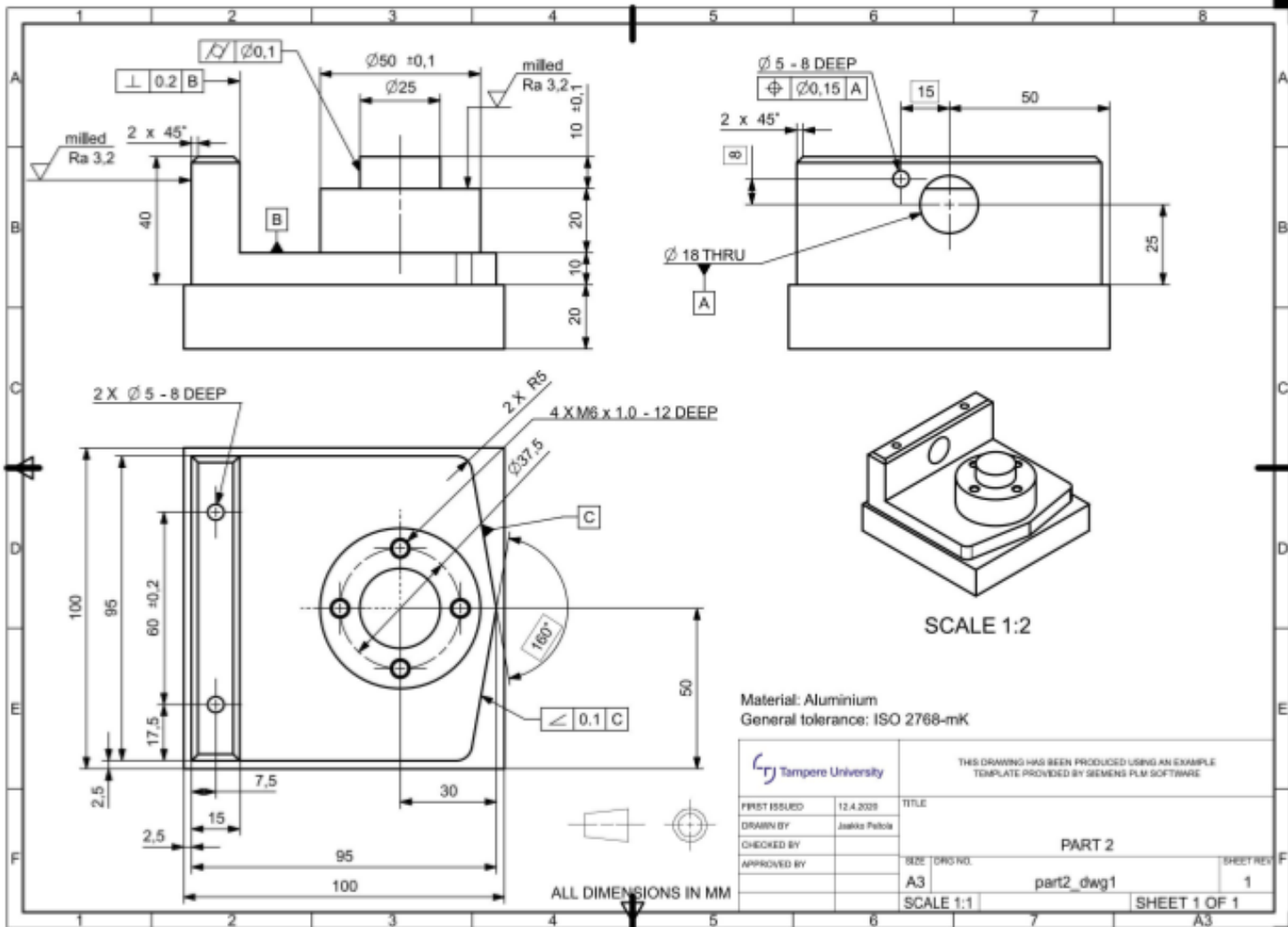


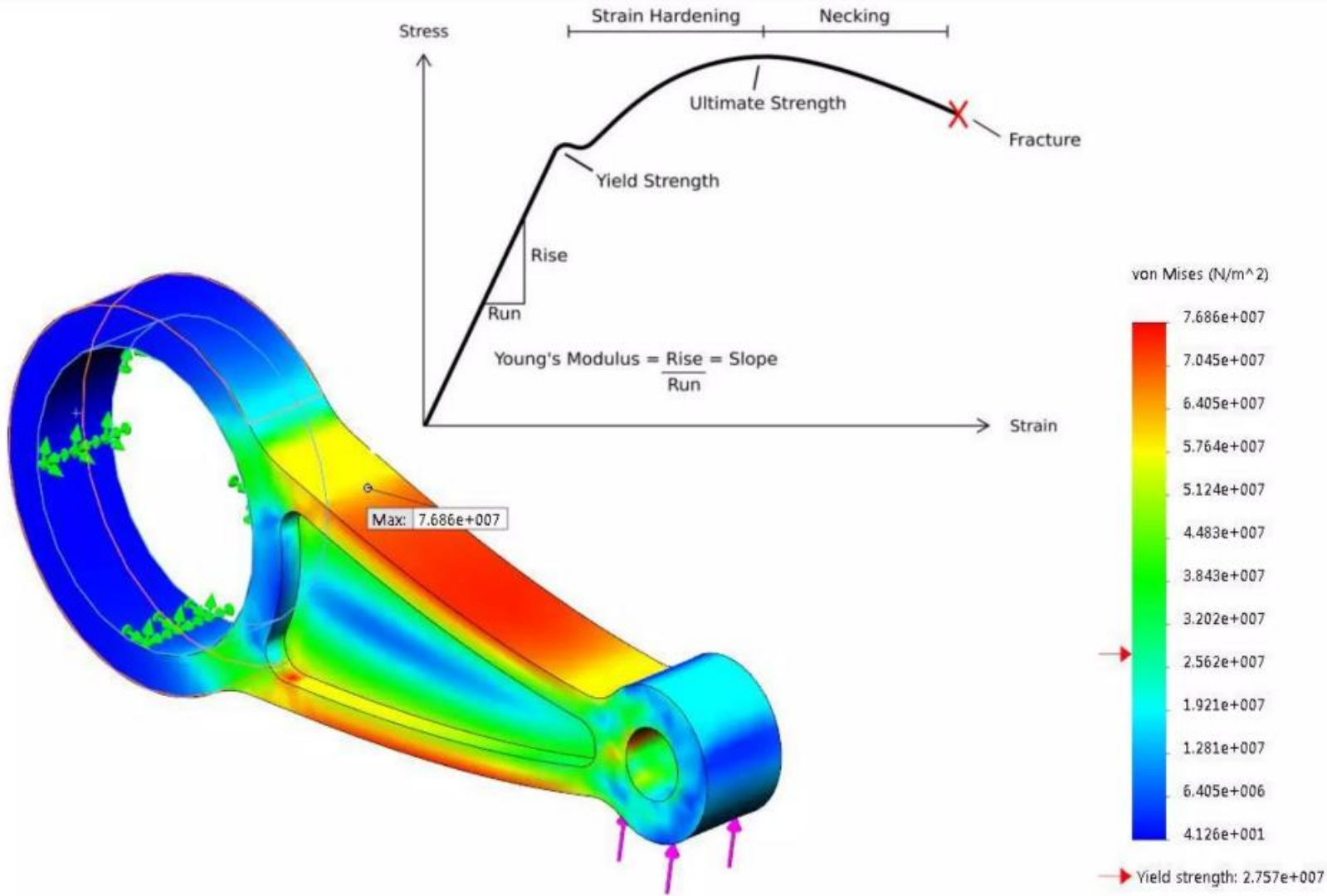
The background is a textured blue surface with a painting of a flowering branch. The branch is brown and gnarled, with several white flowers and green leaves. The painting style is thick and expressive, with visible brushstrokes. In the bottom right corner, there is a glass of water with a dark liquid inside, also rendered in a textured, painterly style.

JEREMIAH



Material: Aluminium
 General tolerance: ISO 2768-mK

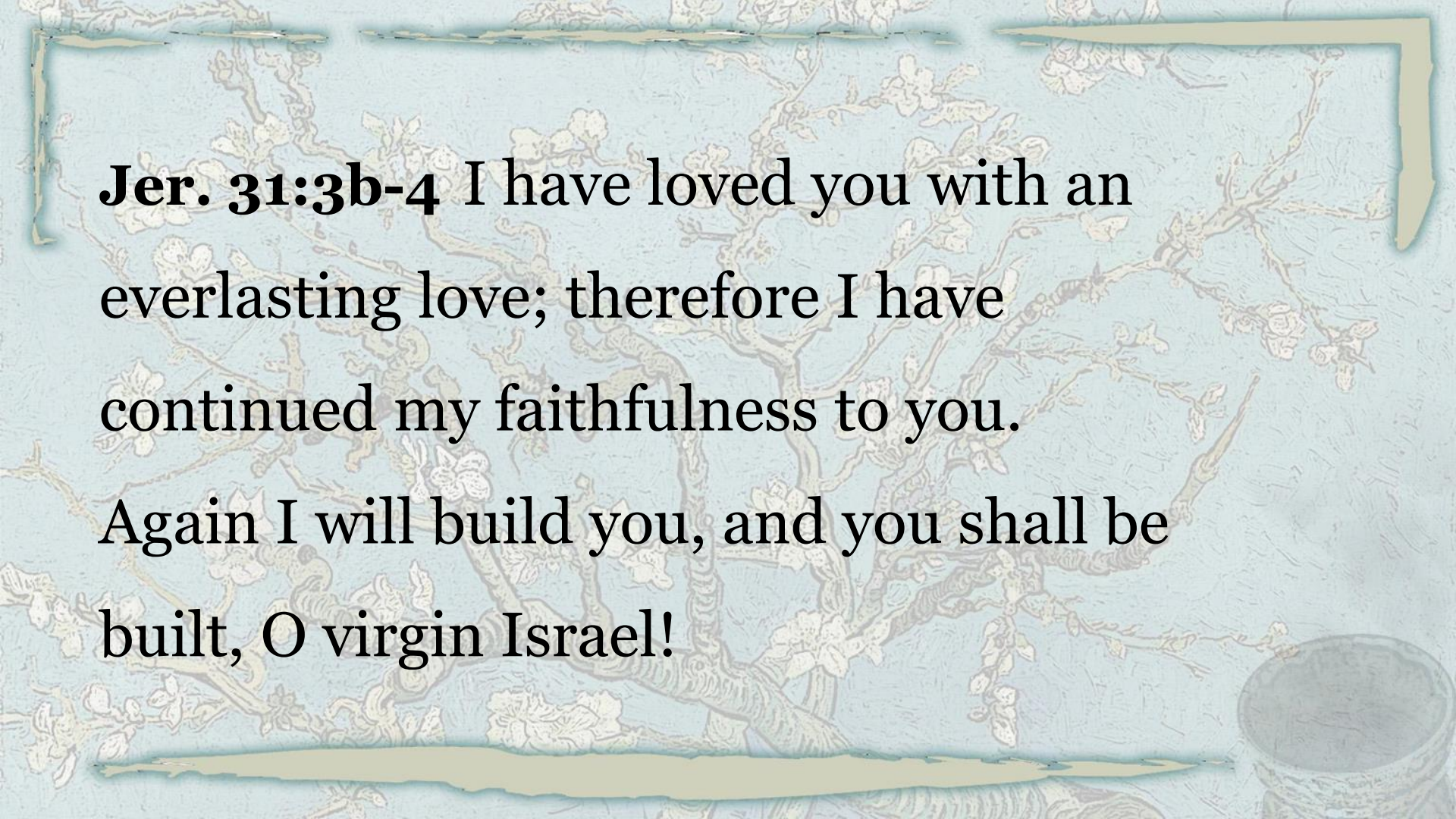
Tampere University		THIS DRAWING HAS BEEN PRODUCED USING AN EXAMPLE TEMPLATE PROVIDED BY SIEMENS PLM SOFTWARE	
FIRST ISSUED	12.4.2023	TITLE	
DRAWN BY	Juukka Pelto		
CHECKED BY			
APPROVED BY			
		PART 2	
		SIZE: DWG NO.	SHEET REF.
		A3	part2_dwg1
		SCALE 1:1	1
			SHEET 1 OF 1





Jer. 31:2-3a Thus says the Lord:

“The people who survived the sword
found grace in the wilderness; when
Israel sought for rest, the Lord appeared
to him from far away.



Jer. 31:3b-4 I have loved you with an everlasting love; therefore I have continued my faithfulness to you.

Again I will build you, and you shall be built, O virgin Israel!

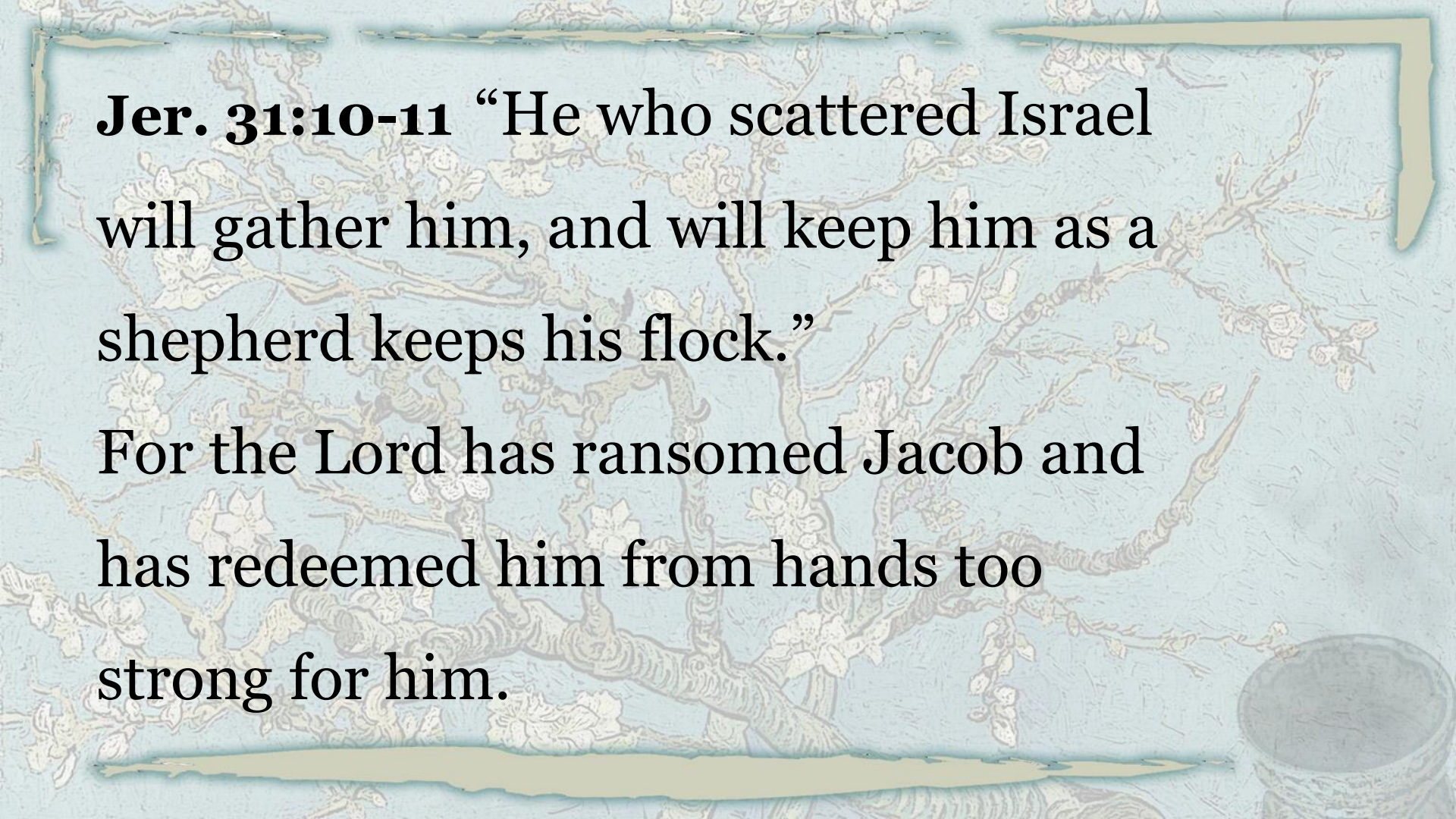


Jer. 31:7a, 9b For thus says the Lord:

“Sing aloud with gladness for Jacob, and
raise shouts for the chief of nations...

For I am a father to Israel, and Ephraim
is my firstborn.





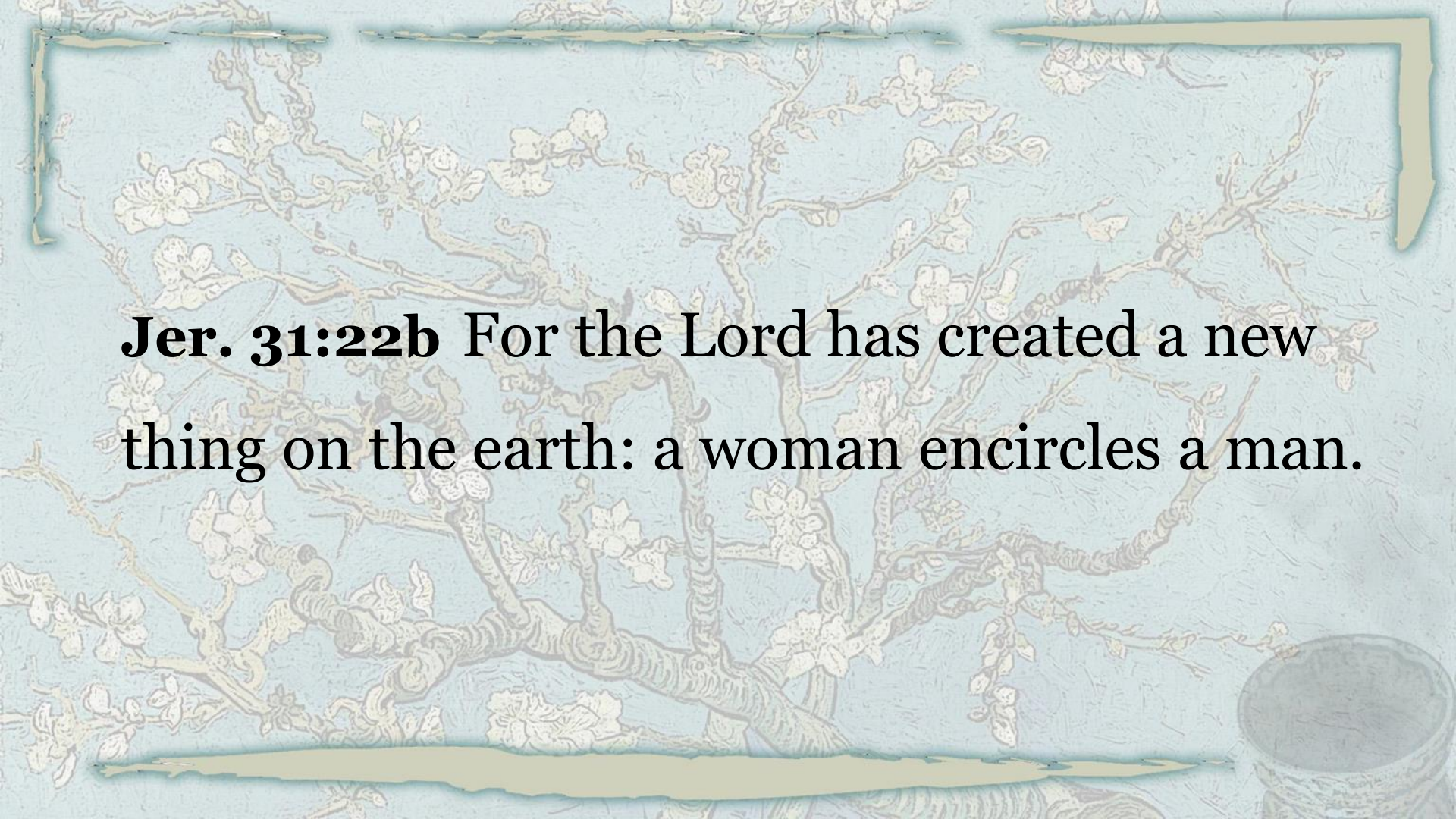
Jer. 31:10-11 “He who scattered Israel will gather him, and will keep him as a shepherd keeps his flock.”

For the Lord has ransomed Jacob and has redeemed him from hands too strong for him.

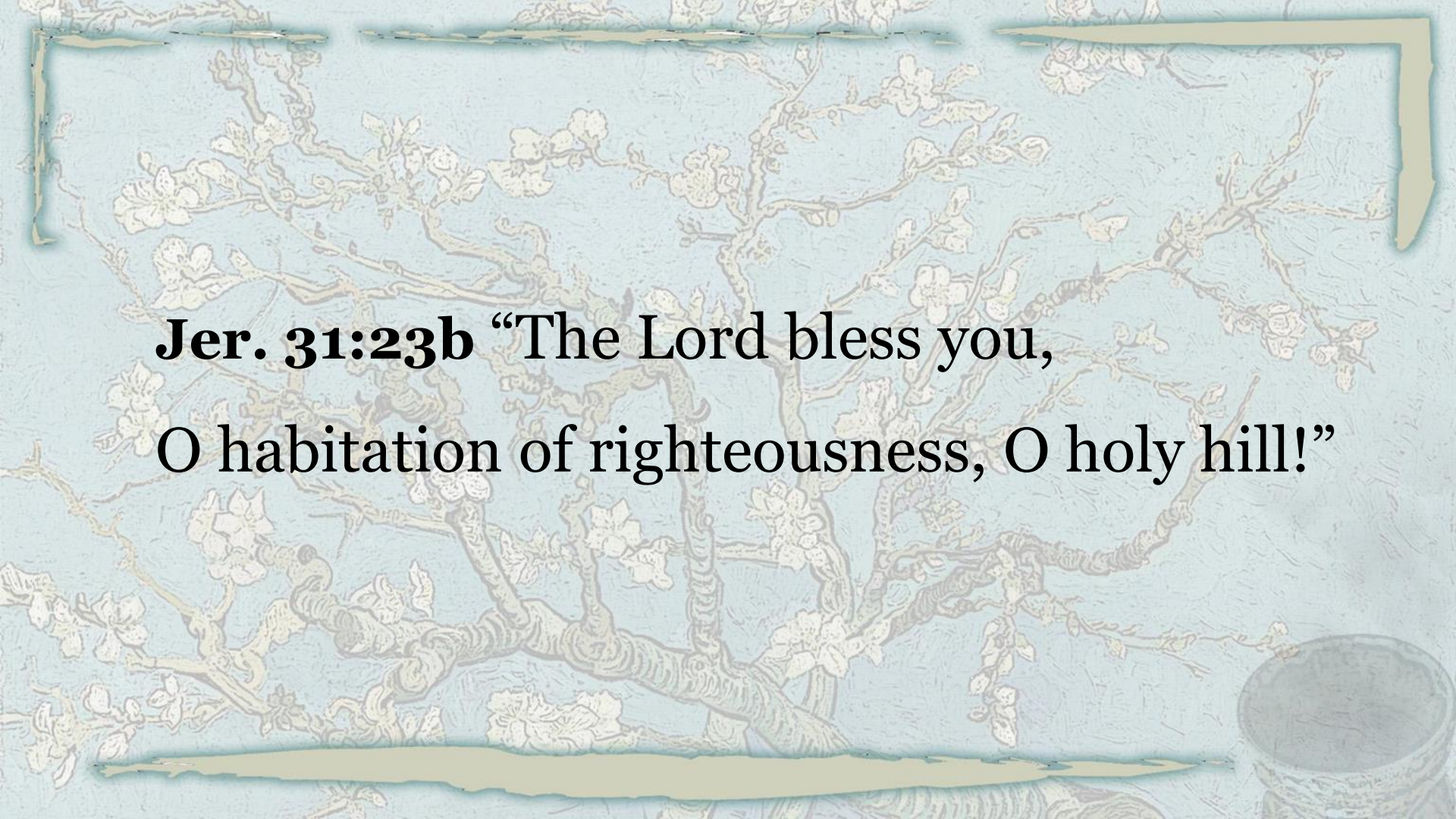


Jer. 31:20 Is Ephraim my dear son?

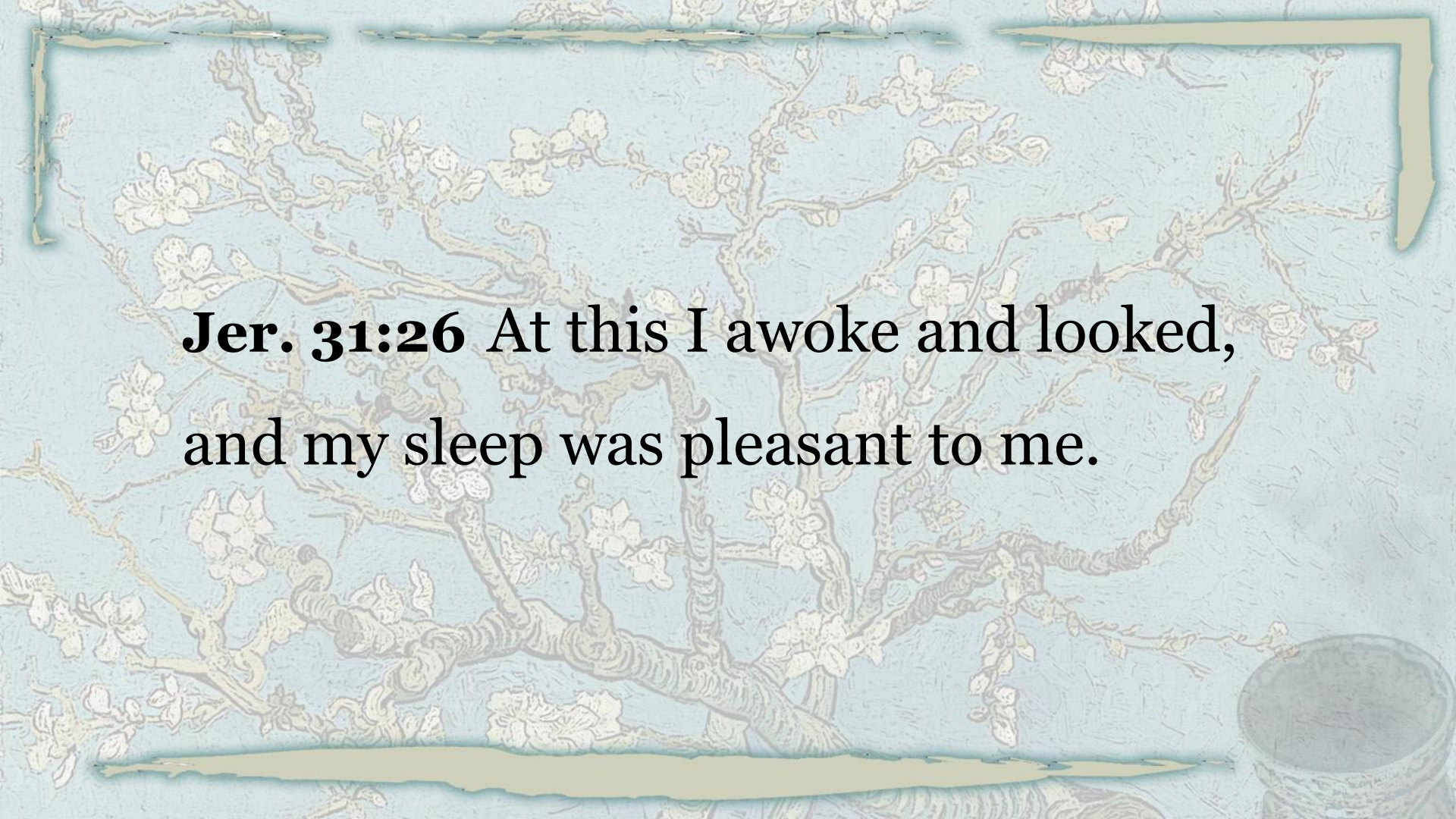
Is he my darling child? For as often as I speak against him, I do remember him still. Therefore my heart yearns for him; I will surely have mercy on him, declares the Lord.



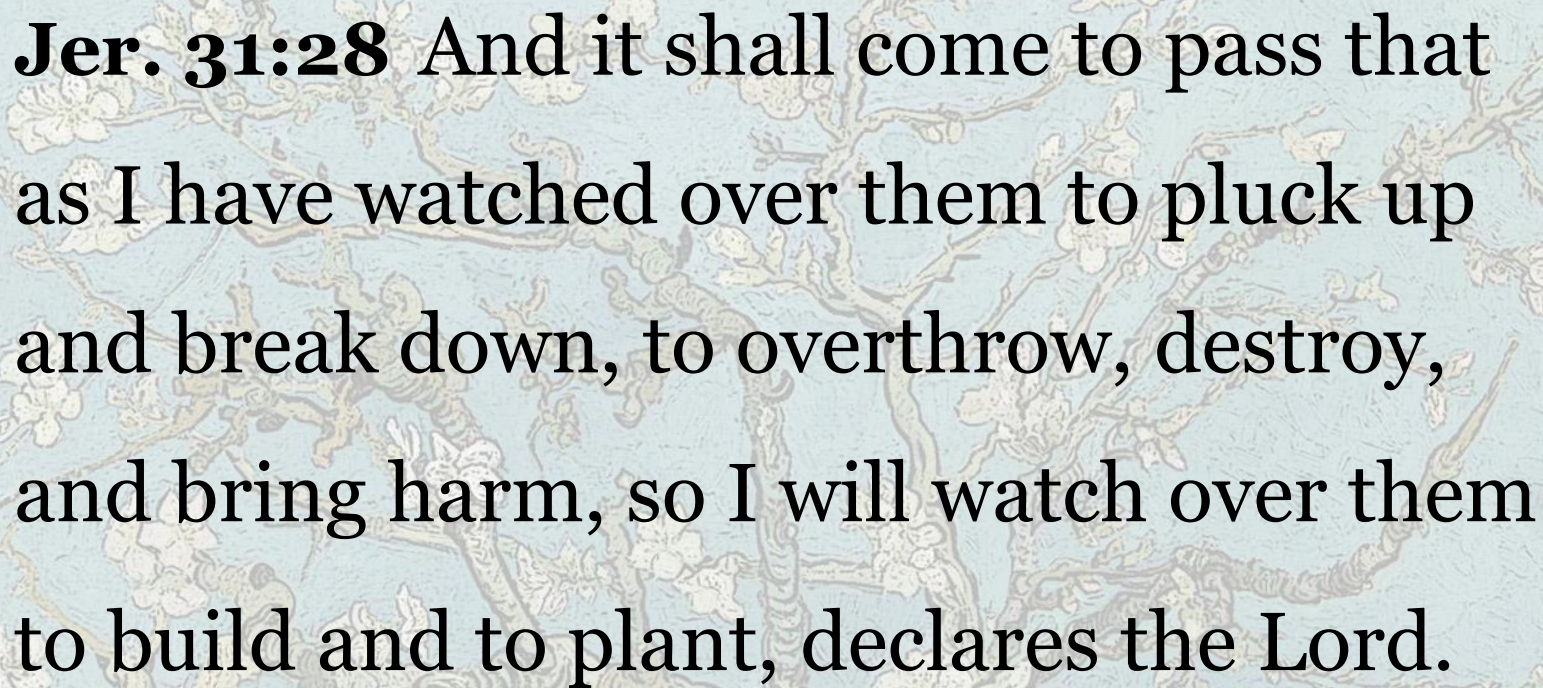
Jer. 31:22b For the Lord has created a new thing on the earth: a woman encircles a man.



Jer. 31:23b “The Lord bless you,
O habitation of righteousness, O holy hill!”



Jer. 31:26 At this I awoke and looked,
and my sleep was pleasant to me.



Jer. 31:28 And it shall come to pass that
as I have watched over them to pluck up
and break down, to overthrow, destroy,
and bring harm, so I will watch over them
to build and to plant, declares the Lord.



The background is a textured blue surface with a painting of a flowering branch. The branch is brown and gnarled, with several white flowers and green leaves. The painting style is expressive and somewhat abstract. In the bottom right corner, there is a glass of water with a dark liquid inside, possibly tea or coffee. The word "JEREMIAH" is written in large, bold, yellow letters with a white outline, centered horizontally across the middle of the image.

JEREMIAH