



# How now shall we live?

*Applying the truths of our newness in Christ  
to our most challenging relationships*

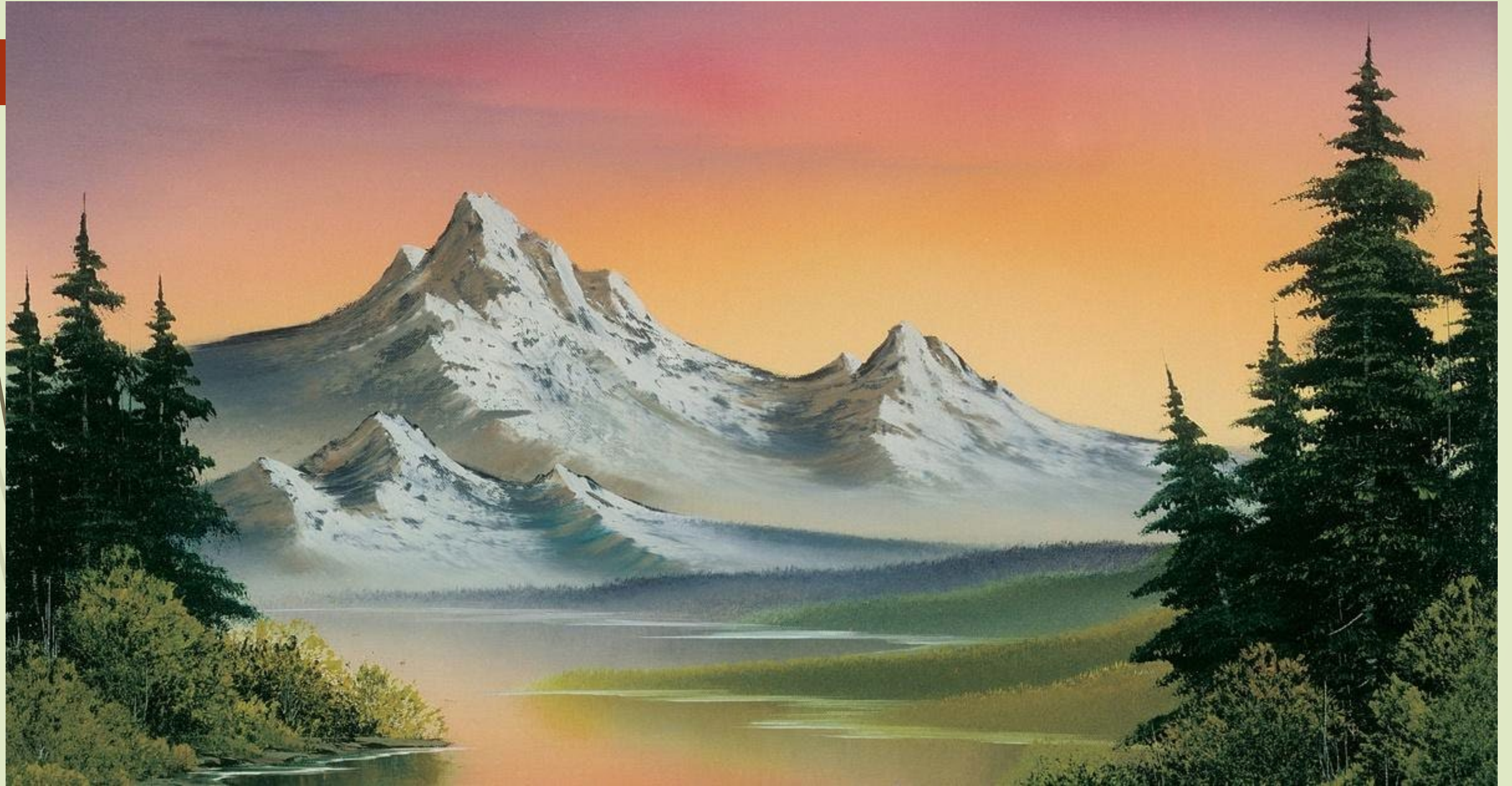
## Primary themes Peter covered in first 2 chapters

1. You are transformed through God's mercy and Jesus' sacrifice with a new birth, new hope, new life, new everlasting inheritance and as a new chosen people. 1:3-5; 2:9-10
2. There will be suffering, but God is redeeming this and your persecution, even as God purposed and redeemed Christ's sufferings and rejections 1:6-11; 2:4-7; 2:21-25
3. Know and live into your new identify and calling 1:13-17; 2:1-3
4. Live your lives before non-believers as a testimony of God's grace, worthy of your calling by practicing humble submission 2:12- 20



I'm glad you could join me today!











# Complementarian Viewpoint of marriage

- Derives from the word “complement”; men and women complement each other for a more beautiful whole
- Men and women are both of equal, intrinsic value before God—both of equal value and importance within the marriage.
- However, they have different, complementary roles or functions, relative to leadership and ultimate decision-making with the husband serving as the spiritual leader in the family
- A view of husbands as servant leaders where there is mutual care, respect, serving and honoring of each other in a marriage




# When lived out well, what it's not:


- Husbands are tyrants who lord it over their wives, and wives are doormats without brains
- Women exist simply to serve their husbands and children
- The husband makes all the decisions
- Men must go to work and bring home all the bacon and women are to stay at home and take care of the home and children
- Verses to support this: I Cor. 11:3-10; Eph. 5:22, I Pet. 3:1



# What is egalitarian viewpoint?

- Agree with complementarians that men and women are equal in worth
  - Men and women are considered equal in role capabilities as well
  - Spouses are equally responsible for the family.
  - Marriage is a partnership of two equals submitting to one another.
  - Roles should be ability-based and not gender-based
- 





# What it's not when lived out well and intentionally:

- A view that has a low view of scripture, that seeks to undermine Scripture
- A way to do marriage when you're married to a really dominant woman
- A marriage filled with constant impasses
- Scripture to support this: Gen. 2:24; Gal. 3:28; Eph. 5:21



# Peter's priorities


- Winning over your unbelieving spouse who sees the purity and reverence of your lives - v. 1
- Focusing your attention on a godly spirit – your spiritual rather than physical beauty - v. 3-5
- Treating your wife with consideration and respect; as co-heirs - v. 7
- Not having your prayers hindered - v. 7



# What Peter learned from Jesus about leadership and relationships


- Matthew 20:20-28
  - John 21:15-17
- 





# The qualities of a chosen people community (v. 8-12)

- Living in harmony; seek and pursuing peace
- Sympathetic towards others
- Love others deeply
- Compassionate
- Humility
- Replying to evil or insult with blessing



**Be prepared** with a gentle and respectful answer and your life example (v. 13-17)

**Means, Motive, Opportunity** to living the Christian life