

Gospel of John

BELIEVE

AND LIVE



BUT THESE ARE WRITTEN SO
THAT YOU MAY BELIEVE
THAT JESUS IS THE CHRIST,
THE SON OF GOD, AND THAT
BY BELIEVING YOU MAY
HAVE LIFE IN HIS NAME.

John 20:31





HOW WOULD YOU
DEFINE “POWER”?





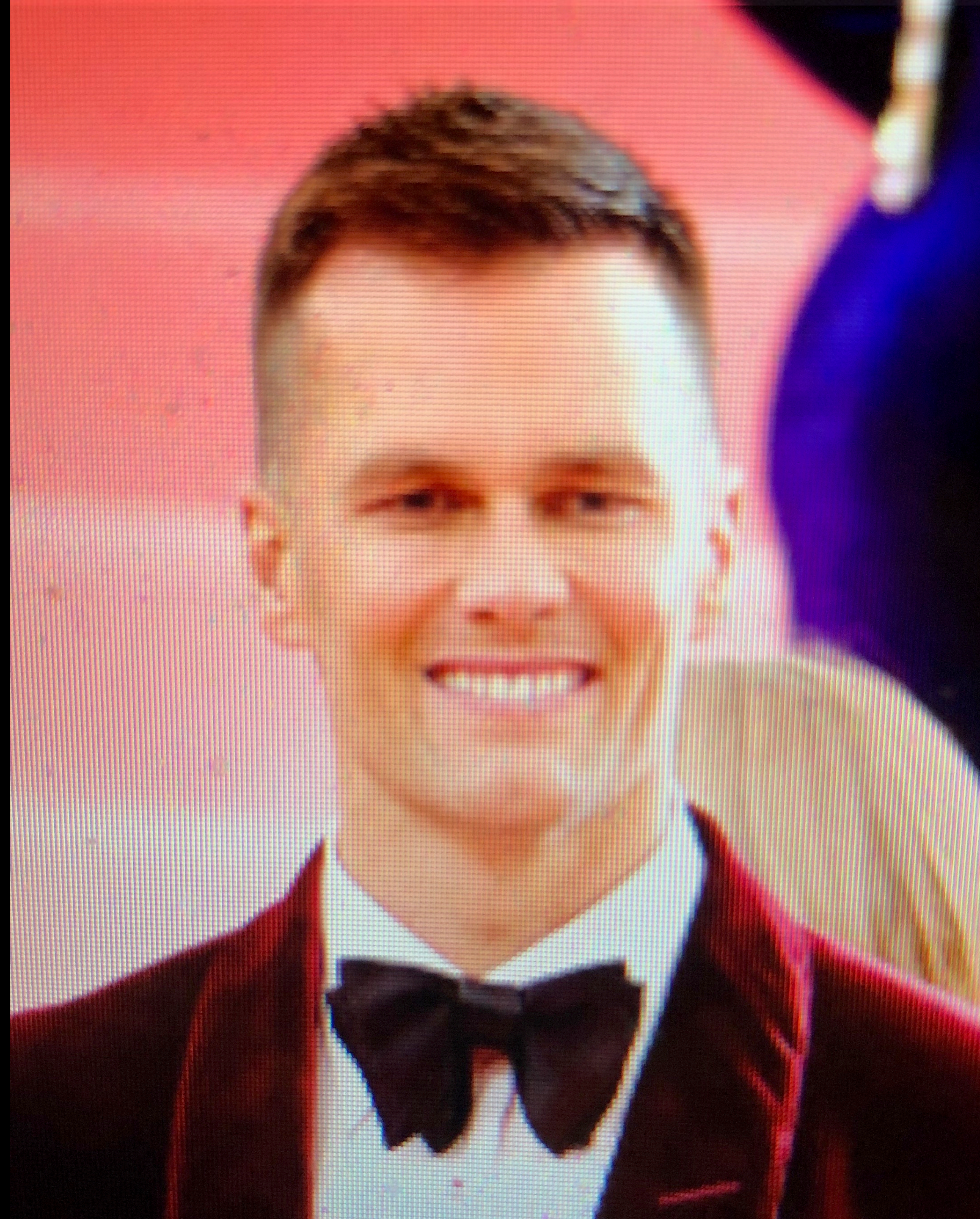


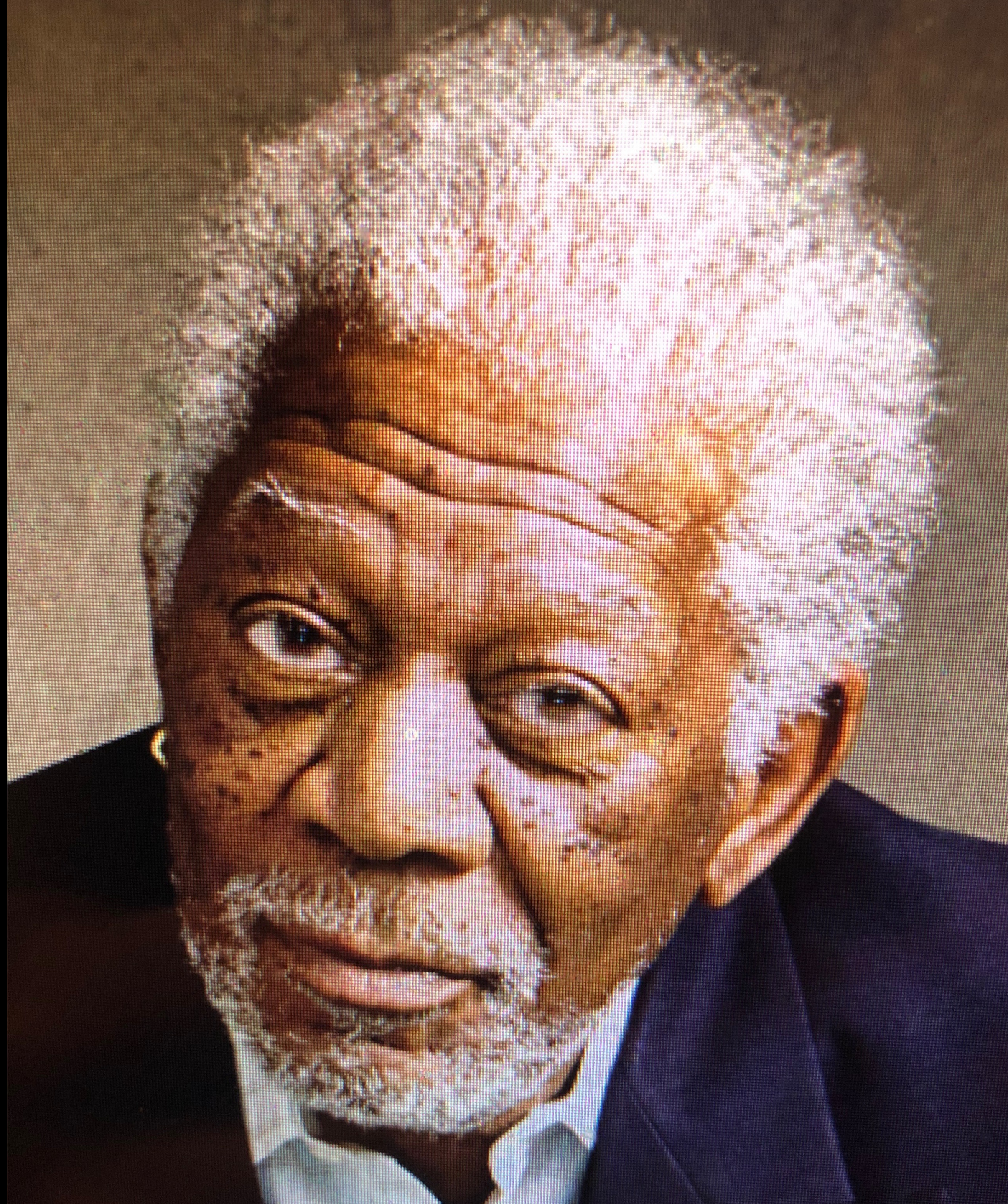


FaceApp

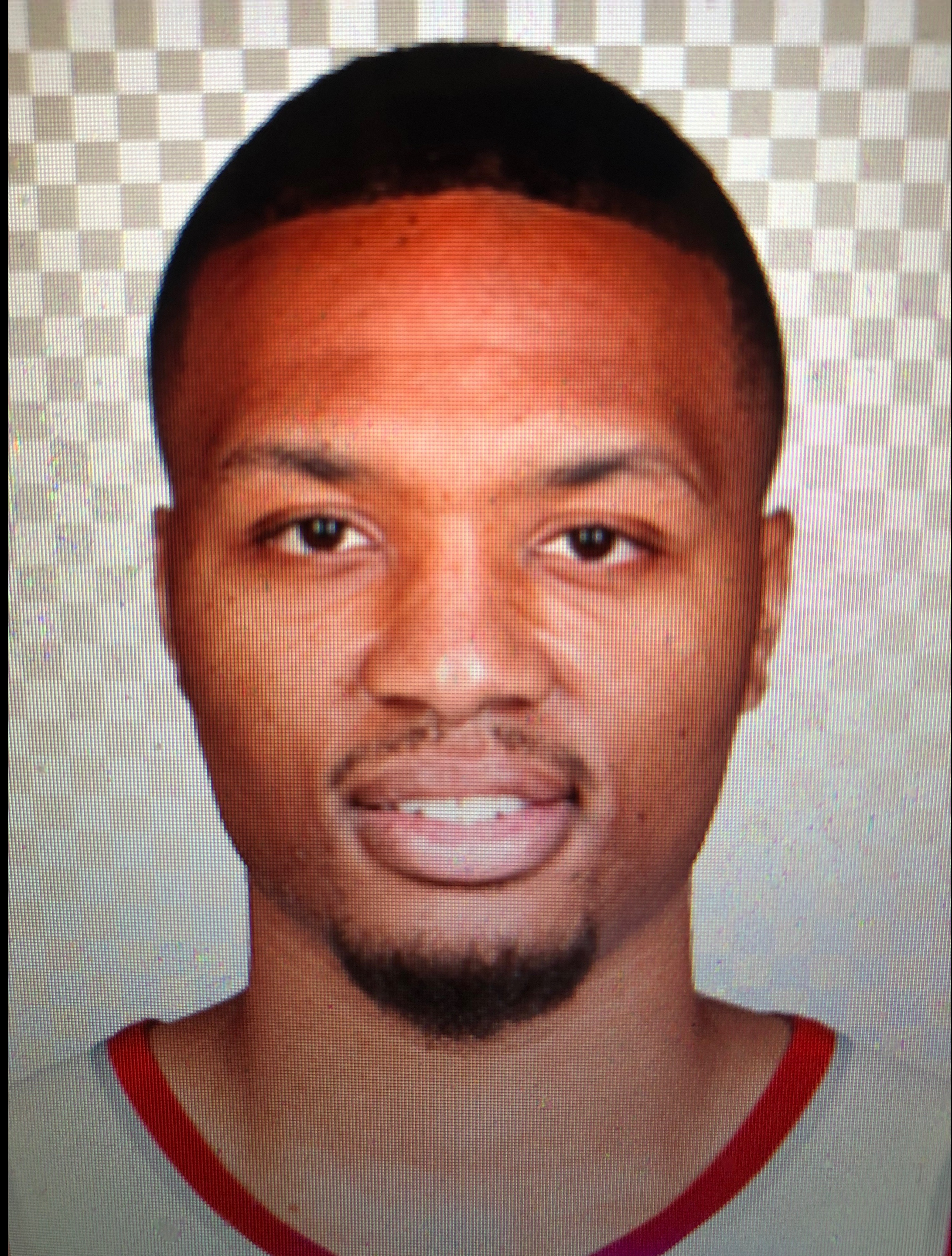


FaceApp



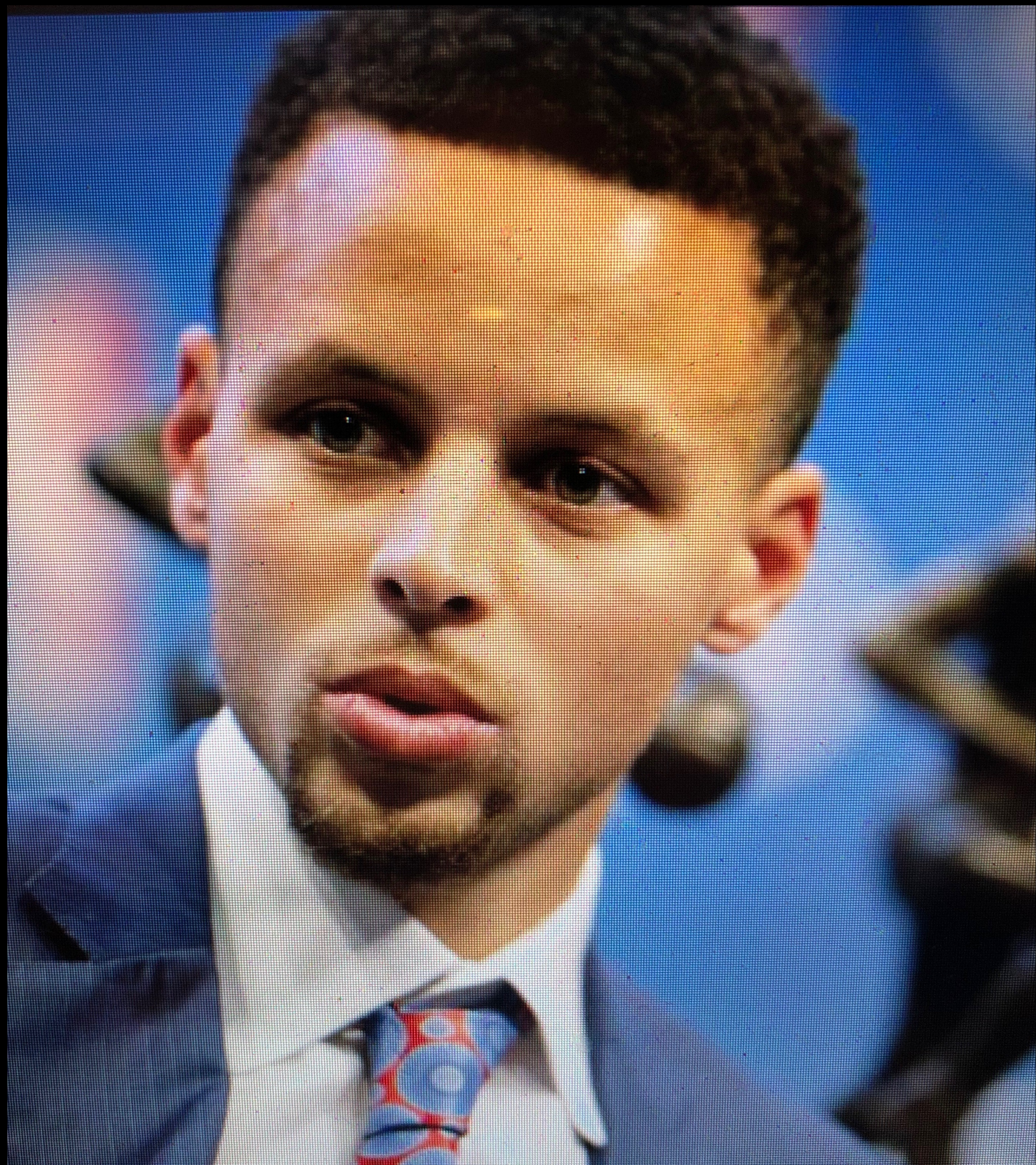


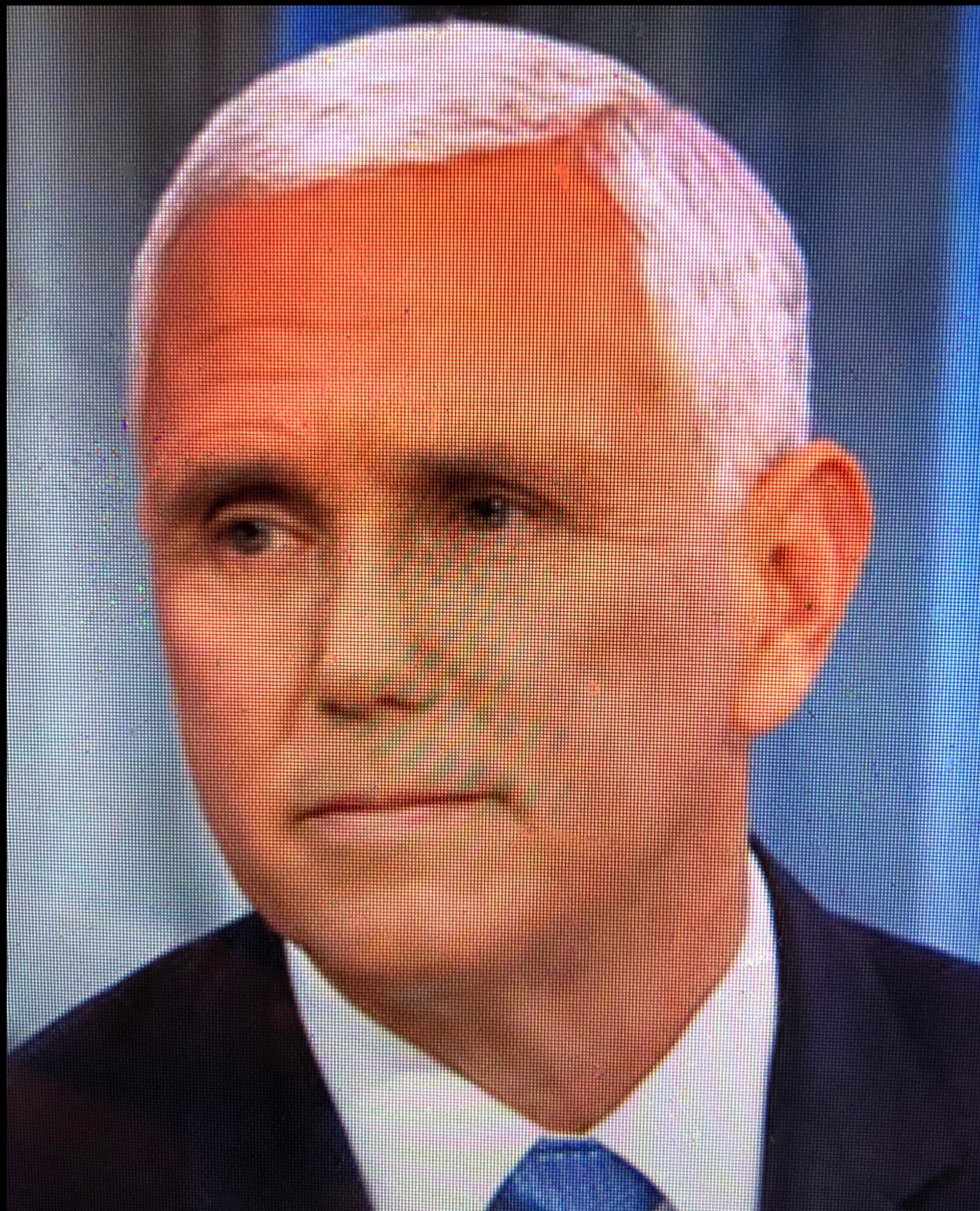














JOHN 18:3-4

3 So Judas came to the garden. He was guiding a group of soldiers and some officials. The chief priests and the Pharisees had sent them. They were carrying torches, lanterns and weapons.

4 Jesus knew everything that was going to happen to him. So he went out and asked them, "Who do you want?"

BIG IDEA

In God's kingdom power flows
out of perspective, humility and
obedience.

JOHN 18:28-19:16

18:28-38

Jesus shows power in having
the right PERSPECTIVE

19:1-11

Jesus shows power in His HUMILITY


19:12-16

Jesus shows power in His
OBEDIENCE to the Father



PERSPECTIVE

seeing from the correct angle
and with right understanding.





JOHN 18:28-19:16

18:28-38

Jesus shows power in having
the right PERSPECTIVE

19:1-11

Jesus shows power in His HUMILITY

19:12-16

Jesus shows power in His
OBEDIENCE to the Father

JOHN 18:28-19:16

18:28-38

Jesus shows power in having
the right PERSPECTIVE

19:1-11

Jesus shows power in His HUMILITY


19:12-16

Jesus shows power in His
OBEDIENCE to the Father



HUMILITY

having a proper (low) view of myself
and proper (high) view others.



JOHN 18:28-19:16

18:28-38

Jesus shows power in having the right PERSPECTIVE

19:1-11

Jesus shows power in His HUMILITY

19:12-16

Jesus shows power in His OBEDIENCE to the Father

JOHN 18:28-19:16

18:28-38

Jesus shows power in having
the right PERSPECTIVE

19:1-11

Jesus shows power in His HUMILITY

19:12-16

Jesus shows power in His
OBEDIENCE to the Father

OBEDIENCE

hearing God's word and
acting accordingly.



BIG IDEA

In God's kingdom power flows
out of perspective, humility and
obedience.

Gospel of John

BELIEVE

AND LIVE

