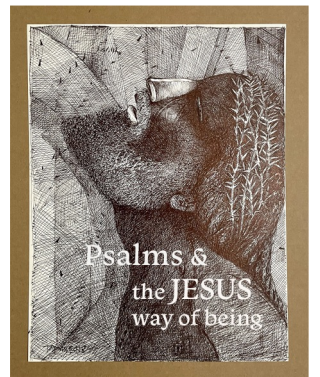


Jesus R00024 by Tapan Karmakar

“He leaves it to us to catch and revise, to find the forms of how and who in this world we really are and would be, to see how much promise there is on a hurtling planet, swung from a thread of light and saved by nothing but grace.”

Selection from Rod Jellema

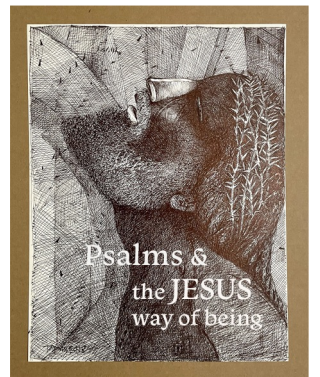
“We Used to Grade God’s Sunsets from the Lost Valley Beach”



Jesus said *“I have come that they might have life, and have it in abundance”* (Jn 10:10).

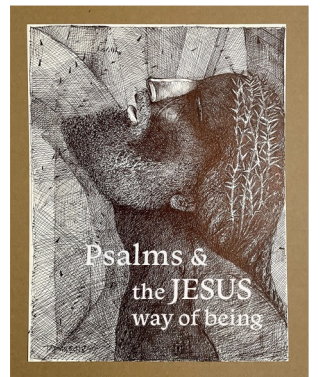
John said of Jesus, *“In him was life, and the life was the light of anthropos - the human race”* (Jn 1:4).

And, John 17:3 *“this is life eternal that they know you the only true God...”*



FASHIONED TO CRY GLORY

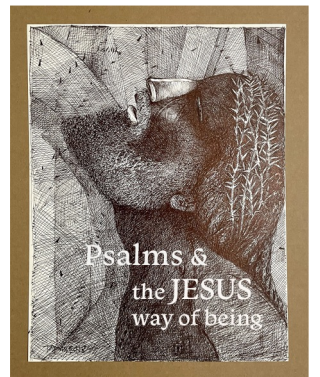
“The heavens declare the glory of God, and the sky above proclaims his handiwork. Day to day pours out speech, night to night reveals knowledge. There is no speech, nor are there words, whose voice is not heard. Their voice goes through all the earth and their words to the end of the world.” Psalm 19



FORMED TO BELONG TO GOD

Isaiah 43:7 *“everyone who is called by my name,
whom I created for my glory, whom I formed and made.”*

Isaiah 43:21 *“the people whom I formed for myself
that they might declare my praise.”*



FUNCTIONAL IMAGE-BEARING

To be human is to be in the likeness of God

GOD

CREATE

Genesis 1

all things are created by God

FUNCTIONAL IMAGE-BEARING

To be human is to be in the likeness of God

GOD

RELATE

Genesis 1:2, 26

“let us create humankind in our image”

FUNCTIONAL IMAGE-BEARING

To be human is to be in the likeness of God

GOD

CULTIVATE

Genesis 2:8-14

providing mists to water, sun to warm, caretakers, etc.

FUNCTIONAL IMAGE-BEARING

To be human is to be in the likeness of God

GOD

MULTIPLY

Genesis 1:26
representatives in his own
image

FUNCTIONAL IMAGE-BEARING

To be human is to be in the likeness of God

GOD

REST

Genesis 2:1-3

rests from work, ceases from labor

FUNCTIONAL IMAGE-BEARING

To be human is to be in the likeness of God

HUMANS in the garden

CREATE

Genesis 2:19-20
out of what is already made
(i.e. Adam names the animals)

FUNCTIONAL IMAGE-BEARING

To be human is to be in the likeness of God

HUMANS in the garden

RELATE

Genesis 2:18, 24-25

“it is not good for man to be alone”

“hold fast to his wife”

FUNCTIONAL IMAGE-BEARING

To be human is to be in the likeness of God

HUMANS in the garden

CULTIVAT
E

Genesis 1:26-27
“subdue it”
“have dominion”

FUNCTIONAL IMAGE-BEARING

To be human is to be in the likeness of God

HUMANS in the garden

MULTIPLY

Genesis 2:18, 24-25

“it is not good for man to be alone”

“hold fast to his wife”

FUNCTIONAL IMAGE-BEARING

To be human is to be in the likeness of God

HUMANS in the garden

REST

Genesis 2:1-3

“God blessed the seventh day
and made it holy” - for humans

FUNCTIONAL IMAGE-BEARING

To be human is to be in the likeness of God

PURPOSE
of the function

CREATE

GIVE LIFE- REVITALIZE

FUNCTIONAL IMAGE-BEARING

To be human is to be in the likeness of God

PURPOSE
of the function

RELATE

IN LOVE, AS GOD IS LOVE

FUNCTIONAL IMAGE-BEARING

To be human is to be in the likeness of God

PURPOSE
of the function

CULTIVATE

FOR GOOD -
A THING IS AS IT SHOULD BE

FUNCTIONAL IMAGE-BEARING

To be human is to be in the likeness of God

PURPOSE
of the function

MULTIPLY

RELEASE TO GOD
NOT FOR STORING UP

FUNCTIONAL IMAGE-BEARING

To be human is to be in the likeness of God

PURPOSE
of the function

REST

IN GOD ALONE

FUNCTIONAL IMAGE-BEARING

To be human is to be in the likeness of God

HUMAN
in the city

CREATE

Rev 21:23-26

“kings of the earth will bring their
glory into it”

FUNCTIONAL IMAGE-BEARING

To be human is to be in the likeness of God

HUMAN
in the city

RELATE

Rev 21:3-4

“He will dwell with them, and they will be his people”

FUNCTIONAL IMAGE-BEARING

To be human is to be in the likeness of God

HUMAN
in the city

CULTIVATE

Rev 22:5

“and they will reign forever and ever”

FUNCTIONAL IMAGE-BEARING

To be human is to be in the likeness of God

HUMAN
in the city

MULTIPLY

Rev 21:4

“death shall be no more, neither shall there be mourning. . .”

FUNCTIONAL IMAGE-BEARING

To be human is to be in the likeness of God

HUMAN in the city

REST

Rev 22:3B, 4

“his servants will worship him”

“they will see his face”

CALL OUT TO GOD

Dear God,

I am tired and weary of trying to live up on my own – the harder I try, the more seems to be asked. The more that is asked, the more I fail. I need your help.

I want to figure out what it means to rest from my own work and somehow find my rest in you alone. Amen

If this is what you prayed, we invite you to speak with someone you came with, or come to the front to speak with a leader, or speak with Pastor Kim before you leave.

BENEDICTION

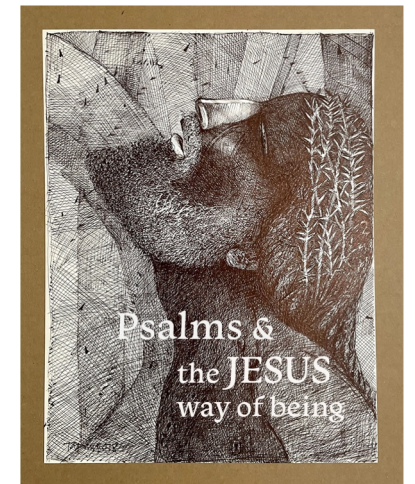
God our Father's divine power has granted to us all things that pertain to life and godliness, through the knowledge of him who called us to his own glory and excellence.

In this week ahead may God help us to see how much promise there is on a hurtling planet, swung from a thread of light and saved by nothing but grace

SERMON RESOURCES

A link will be available on Tuesday on the FOL APP where you can access the following resources:

- Spotify Playlist – 10 songs secular & Christian
- Book *How to Inhabit Time* James K.A. Smith
- My Flourishing Scorecard
- Video of how to use the Flourishing Scorecard



Jesus R00024

Tapan Karmakar