

REEDLEY MENNONITE BRETHREN CHURCH

1362 L Street | Reedley CA | 93654

Phone 559-638-8123

reedleymbc.org

Information/Prayer Line 559-354-6672

SCAN TO CONNECT WITH US ON
OUR DIGITAL FRIENDSHIP FORM
WE'D LOVE TO HEAR FROM YOU!



Sunday Worship Services at 9am

In-Person in the Sanctuary, Live Online

(YouTube, Facebook, reedleymbc.org)

On Demand after 1pm on Monday

Children's Church

Ages 3 through Kindergarten

&

Kingdom Kids

1st Grade - 3rd Grade

Fellowship on the Green at 10:20am

Adult and Children's Classes at 10:40am



The Perk Cafe
Order online and skip
the line! (Sundays only)



Jeff Wheeland, Senior Pastor
Andrew Edmonds, Pastor of Student Ministries
Tami Hawkins, Director of Children's Ministry
Kelly Gilmore, Office Manager
Sheila Penner, Hospitality Coordinator
Charlie Rivoire, Business Manager
Mike Schellenberg, Pastor of Discipleship & Outreach
Michelle Hiatt, Director of Women's Ministries

jeff@reedleymbc.org
andrew.edmonds@reedleymbc.org
tami.hawkins@reedleymbc.org
kelly@reedleymbc.org
sheila@reedleymbc.org
charlie@reedleymbc.org
mike@reedleymbc.org
michelle.hiatt@reedleymbc.org



Palm Sunday



TODAY IS
Palm Sunday

CHILDREN AGES TK-6TH
MEET OUTSIDE THE FRONT
SANCTUARY DOORS AT 8:55AM



*Equipping
Class*

Sundays [10:40am]
Across the Green in
the Fellowship Hall

BABY DEDICATION



MAY 11 9AM

PARENTS CONTACT
THE CHURCH OFFICE
BY MAY 5TH

**HARTLAND MAY
GATHERING**

FREE MAY 17 @ 4PM

"The Park"
9587 Kings River Road

BBQ, Games, Bounce House, Worship,
Message, & Fellowship

rsvp online at harlandcamp.com/gathering

TONIGHT *West Coast*
MENNONITE MENS CHORUS
REEDLEY MB CHURCH

APRIL
13TH

6:00
PM

You Called My Name



Volunteer
with us at
Family Retreat!

April 14-18 Wonder Valley

**FRESH START
RIVER RAFTING
ADVENTURE**

MAY 23-26

Details in the Journal



*** REEDLEY MB CHURCH ***

VBS
2025

YEE HAW!
Celebrating God's Greatest Gift

JUNE 17-20
6-8:30PM

**EASTER
EVENTS**

APRIL 13 - Palm Sunday 9am
APRIL 18 - Good Friday 7pm
APRIL 20 - Decorate Floral Cross
APRIL 20 - Worship Service 9am
APRIL 20 - Courtyard Cafe

Fun in the sun with water play!

**MOMS
PICNIC ON THE GREEN**

MAY 1ST | 10-12
(NOTE TIME CHANGE)

No Nursery this day!

WOMEN OF THE WORD
W.O.W.
Community Bible Study

SEEK FIRST THE KINGDOM
CHRISTINE HOOVER

TUESDAYS 9-11AM MAR 4 - MAY 6

*the Perk
Cafe*

SKIP THE LINE
ORDER ONLINE!



SUNDAY 10:20-11AM

WEDNESDAY 6-7:15PM

THURSDAY 8:30-9:15AM

WOMEN'S MINISTRY
SPRING TEA

SATURDAY, MAY 3RD @ 10:30AM
SIGN UP & PAY \$10 AT THE WOMEN'S KIOSK
OR CHURCH OFFICE BY SUNDAY, APRIL 27TH

Save the Date!

Flourish
Jr High & High School
Girls

May 3rd 3-9pm

Details in Journal

**WE NEED
YOUR HELP**

VOLUNTEER TODAY!

- SUMMER SS TEACHERS
- CHILDREN'S CHURCH
- KINGDOM KIDS
- VACATION BIBLE SCHOOL

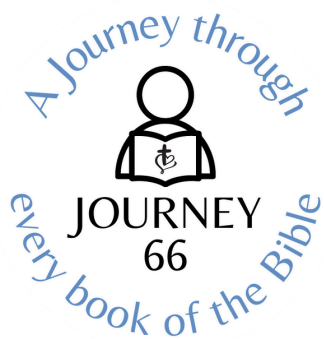
tami.hawkins@reedleymbc.org

2025-26 MISSION TRIPS

- ACTION Mexico, April 11-21, Matthew Training Center
- Germany, June 20-28, Vision Trip with the Carters
- Lithuania, June 28-July 6, Youth Camps
- SOAR California, July 20-24, Fresno-Reedley
- Lakeview Utah, July 27-August 5
- Lithuania, August 2-9, Teen Camp
- Operation Christmas Child, December 8-12
- Village of Hope, December 30-January 3, 2026

See details in the Journal





JOURNAL

REEDLEY MB CHURCH | 1362 L Street | Reedley CA 93654

WORSHIP TODAY

Sunday - April 13, 2025

Today is Palm Sunday and our scripture will be found in Matthew 21.

If you are visiting with us today, we encourage you to download our app (search: Reedleymbc), visit our website (Reedleymbc.org), or visit our Welcome Center where you can get more information and a gift.

Join us tonight for **the West Coast Mennonite Men's Chorus** at Reedley MB Church at 6pm!

MISSION OPPORTUNITIES

Our missionary of the week is the **Reedley MB volunteers attending the Joni and Friends Family retreat** April 14 to 18 at the Wonder Valley Ranch Resort in Sanger, California. Joni and Friends Family retreats happen all over the world and they focus on providing the needs of families experiencing the challenges of disability. Since every person in the family is cared for, it is like a week long vacation for families, many of whom do not get to go on one due to the high needs of their children or adults affected by disability. Short-term missionaries (volunteers) are either paired with a camper buddy who has a disability or who is a sibling to someone with a disability. Our church volunteers are **Tyler Friesen, Hudson Edmonds, Yu-Liang Chu, and Christa Scott**. Pray for the volunteers to look for opportunities to do good and be available to help their buddy. They thank you for your prayers and support.

Thank you Everyone who generously contributed to the Mission Bake Sale last Sunday! We raised \$7,000 for short term missions.

ANNOUNCEMENTS

Congratulations to **Gabriel & Alicia Flores** who were married yesterday.

Thank you! We deeply appreciate the cards, memorial gifts, and other expressions of support and encouragement since Stan passed away. We are grateful for our church.
~ Darlene Huebert and Family

Easter Floral Cross - You are invited to bring fresh flowers on April 20 to help decorate the cross which will be outside on the Church Green. Before you go home, gather your family and friends at the beautiful Resurrection Cross for a cell phone photo.

Volunteers Needed to assist with the **Easter Courtyard Café on April 20**. If you would like to help with prep or clean up, please contact Sheila Penner at 638-8123 or sheila@reedleymbc.org

Our condolence is extended to **the family of Bill Braun**. His service will be Monday April 14 at 10am, in the Sanctuary.

Our condolence is extended to **the family of Dave Jost**. His service will be Tuesday April 15 at 10am, in the Sanctuary.

As we search for a Minister of Pastoral Care, **Pastor Dennis Fast** is available on a limited basis specifically for hospital visits and funerals. He may be reached through the church office.

STEWARDSHIP

Morning Worship: 4/6/25	577
Annual Goal	\$2,191,246
Giving YTD (66%)	1,448,756

GIVING @ RMBC

- Text reedleymbc to 1-888-364-4483
- reedleymbc.org > Give
- RMBC App > Giving
- U S Postal Service
- Office, M-F, 8:30-5p

Welcome

Welcome to Reedley MB. We're pleased to have you join us today for our worship service. It's our prayer that you will meet the living God in this place as we hear from the Word of God. We are here to **GLORIFY** God, **GROW** together as equipped disciples of Jesus Christ, and **GO** proclaiming His gospel to all. If you have questions, please ask, check our app, scan the digital QR code on the back of the Bulletin, or stop by The Welcome Center on our main lawn.

The Perk Cafe

Hours:

Sunday, 10:20-11am

Tuesday, 8:45-9:15am

(1st Tuesday of the Month)

Wednesday, 6-7:15pm

Thursday, 8:45-9:15am

Invite a friend to join you for a specialty coffee/drink in The Student Center at The Perk!

Upcoming Events

We have lots of upcoming events! Don't miss out: check the RMBC Website and App, or the Info Phone Line at 559-354-6672.

Contact Details

Office: 559-638-8123

Email: kelly@reedleymbc.org

Website: reedleymbc.org

Address: 1362 L Street

Reedley, CA 93654

ANNOUNCEMENTS

Today is Palm Sunday Please have your child meet outside, in front of the Sanctuary doors, at 8:55am to get their Palm branches and instruction for the morning worship service.

Needed: The Mission Team is looking for someone to loan a car for two months to a missionary family. Please contact Tonya Goertzen for more details.

STUDENT MINISTRIES

Flourish, May 3rd, 3-9pm, in the Student Center - For all Junior High and High School girls, please join us for an evening of growing in your faith, enjoying fun games, crafting, and sharing a delicious dinner together! Bring your Bibles, a pillow, blankets, and wear comfortable clothes to be active and relaxed. *Flourish - Let your roots grow down into him, and let your lives be built on him. Then your faith will grow strong in the truth you were taught, and you will overflow with thankfulness. ~ Colossians 2:7*

Fresh Start for Freshman, May 23-26 - To all incoming RMBC Freshman students entering 9th grade in the fall of 2025. Join us for The Fresh Start Rafting trip, which serves as a special 'promotion' camp to instill confidence and create strong connections with our incoming freshman before you enter high school. This Memorial Day Weekend adventure is designed to give you a faith, fun-filled, wild, and wet experience rafting down the Great American River at Rock and Water Campsite in Lotus CA. We will leave after school on Friday, May 23 and return home early on May 26. Cost is \$50 for incoming Freshman and \$300 for all other highschoolers. Secure your spot early Space is limited. Fundraising opportunities are available (Memory verses and Work Days). Ask Pastor Andrew about these options.

Junior High Sunday School - All 7th & 8th grade students meet in SC 200 at 10:40am.

Junior High Wednesday - All 7th and 8th grade students meet at 6:30pm in SC 200 in the Student Center. Pick up time for parents is 8pm.

Senior High Sunday School - All High School Students meet in SC 100 at 10:40am.

Senior High Wednesday - High school students gather for games, food, community, and truth from God's Word in SC 100 at 6pm. Pick up time for parents is 8pm.

Contact andrew.edmonds@reedleymbc.org for more information.

COLLEGE & YOUNG ADULT MINISTRY

Sunday School - meets in the Student Center, SC 202, 10:40am

Sunday Night - tonight is the Mennonite Men's Chorus Meet in the Sanctuary at 6pm. Please sit closely together. Plan to get there a little early because it usually draws a pretty big crowd. Immediately after the performance, we will decide if we will walk over to the Student Center or carpool to a local restaurant.

Easter Sunday - April 20th, no Sunday School and no Sunday night. Have a great Easter with family and/or friends.

WOMEN'S MINISTRY

Women's Ministry Event - Spring Tea - Ladies of all ages are invited to attend our Spring Tea in the Fellowship Hall on Saturday, May 3rd at 10:30am. Our speaker will be Miriam Aleman. Volunteers are needed to set tables with their own dishes. Tablecloths and centerpieces will be provided. Sign up and pay \$10 to attend and/or set a table at the Women's Ministry kiosk in the main foyer, online, or in the Church office, beginning today. Deadline to sign up is Sunday, April 27.

WOW (Women of the Word Community Bible Study) meets every Tuesday morning from 9-11am in the Student Center. We continue our study "Seek First the Kingdom" by Christine Hoover. It is God's invitation to life and joy in the book of Matthew. Come enjoy coffee, worship, video teaching, small group discussion, and prayer. Ladies of all ages are welcome!

NO MOMS Meeting this week - Enjoy time with your children and celebrate the resurrection of Jesus Christ!

Bible Recap, Tuesdays, 11:30am - Bible Recap is a small group of ladies who meet at the home of Tonya Goertzen to read the Bible and discuss it together. Please contact Tonya at 559-859-5138 for more information.

Contact michelle.hiett@reedleymbc.org for more information.

MEN'S MINISTRY

Forged Men's Group: Mondays at 7pm in SC 100

Cross Trainers Basketball: Wednesdays at 7pm, Immanuel.

Pickleball: Thursdays at 7pm, at the RMBC Court.

Contact mike@reedleymbc.org for more information.

CHILDREN'S MINISTRY

Nursery (birth through Age 2: Children's Center, as well as a parent room in the foyer of the sanctuary, next to the Women's Restroom.

Children's Church (Age 3 through Kindergarten): Children meet in the breezeway when dismissed from the worship service. Children's Church is in the Tree Top Room in the Children's Center.

Kingdom Kids (1st - 3rd grade): Children meet in the breezeway when dismissed from the worship service. Kingdom Kids is in the Vineyard room in the Children's Center.

Sunday School: Join us for a morning of learning, fellowship, and spiritual growth. Children's Center: Ages 3 & 4 -- Mountain Top Room, PreK-K -- River Room, Grades 1st & 2nd -- Garden Room, and Grades 3rd & 4th -- Vineyard Room. Student Center: Grades 5th & 6th -- SC 208 upstairs.

Contact tami.hawkins@reedleymbc.org for more information.

Palm Sunday 2025
Matthew 21 (page 826)
Pastor Jeff Wheeland
April 13, 2025

Topic #1: This Palm Sunday we read about the... _____
(21:1-5)

Topic #2: This Palm Sunday we read about the... _____
(21:6-11)

Topic #3: This Palm Sunday we read about the... _____
(21:12-22)

Topic #4: This Palm Sunday we read about the... _____
(21:23-27)

Topic #5: This Palm Sunday we read about the... _____
(21:28-46)

DATE: April 13, 2025

MEETING: RMBC Sunday School Equipping Class in the Fellowship Hall

Time	Activity	Sample Sunday School Class
10:40-11:00	Body Life Prayer Time	-Show Video
11:00-11:30	Small Group Discussion	-Scripture
11:30-11:40	Large Group Discussion	-Share
11:40	End Sunday School Class	-Supplication

*****Please text Sunday School Attendance to Pastor Mike Schellenberg - (559)-393-3000**

1. Read Matthew 21 and Zechariah 9.
2. Prayer time: Go around your group and ask for prayer requests. Pray together.
3. Ice Breaker Question #1: Do you have any highlights or lowlights this week? Please share.
4. Ice Breaker Question #2: Jeff mentioned Palm Village. Do you have family members that live at Palm Village? Where would you like to retire one day?
5. Ice Breaker Question #3: Jeff mentioned the movie about Ronald Reagan. Do you have a favorite historical figure? If you could meet a historical figure, who would you want to meet and why?
6. Ice Breaker Question #4: Jeff was at Hume Lake on Tuesday. Do you have any special plans for this Summer that you are looking forward to? Please share.

Palm Sunday 2025 - Matthew 21 (page 826)

Topic #1: This Palm Sunday we read about the...prophecy. (21:1-5)

- Matthew 21 is a fulfillment of Zechariah 9. Read Zechariah 9.
- Can you name some prophecies in the Bible that came to pass?
- What prophecies in the Bible are you looking forward to?
- Read Matthew 24 about the Second Coming of Christ.

Topic #2: This Palm Sunday we read about the...praise. (21:6-11)

- Jeff mentioned Immanuel Chapel Band and how he loves that they sing, "Praise."
- What are some of your favorite praise songs?
- Spend some time praising the Lord right now. (share praises during prayer time)

Topic #3: This Palm Sunday we read about the...prayer. (21:12-22)

- Jesus mentions that his house is to be a house of prayer.
- Why does Jeff focus so much on prayer?
- What are some helpful hints you would share to help us improve our individual prayer life?

Topic #4: This Palm Sunday we read about the...power. (21:23-27)

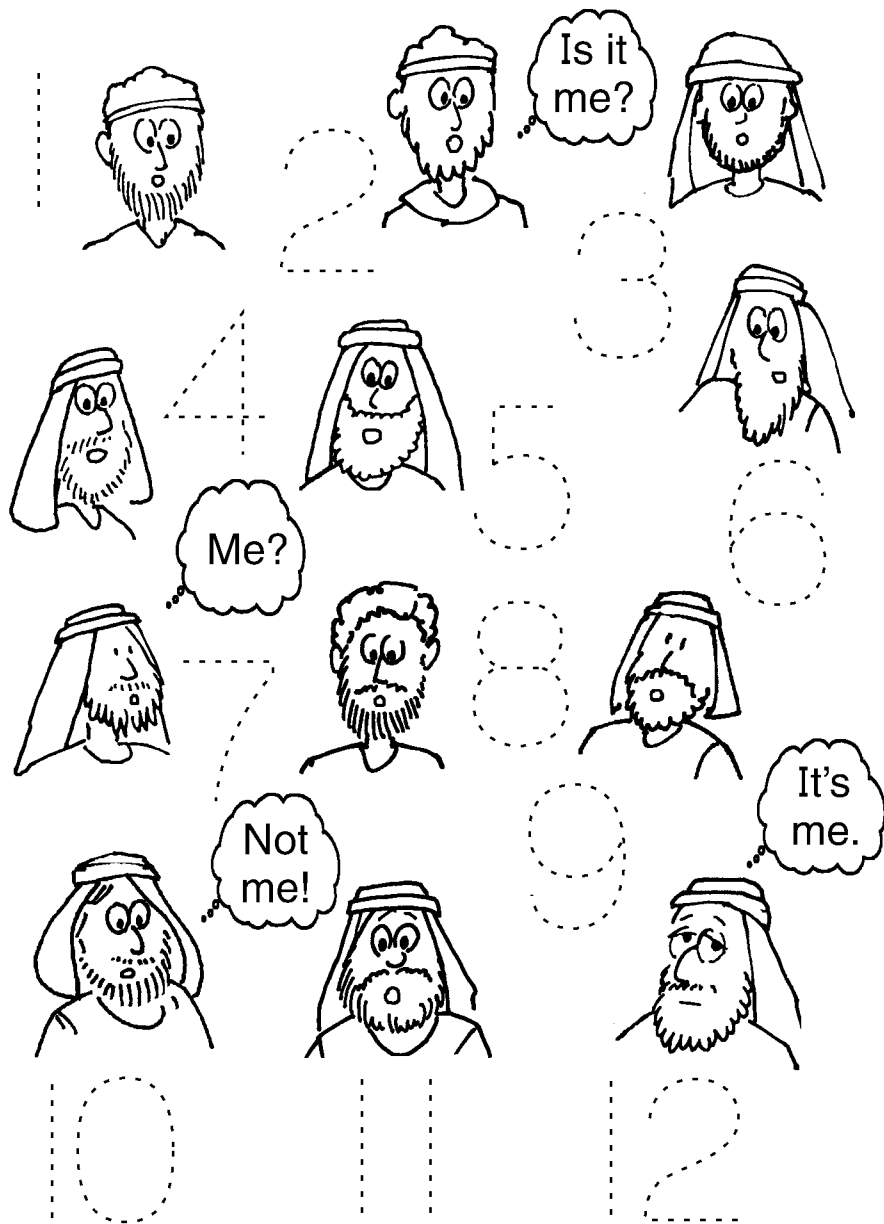
- Mention some places and/or situations in the Bible where God's power is mentioned.
- How have you seen or experienced God's power in your life?

Topic #5: This Palm Sunday we read about the...parables. (21:28-46)

Hard Stop at 11:40 AM.

The disciples wondered who it was.

Count the disciples. Trace the numbers.



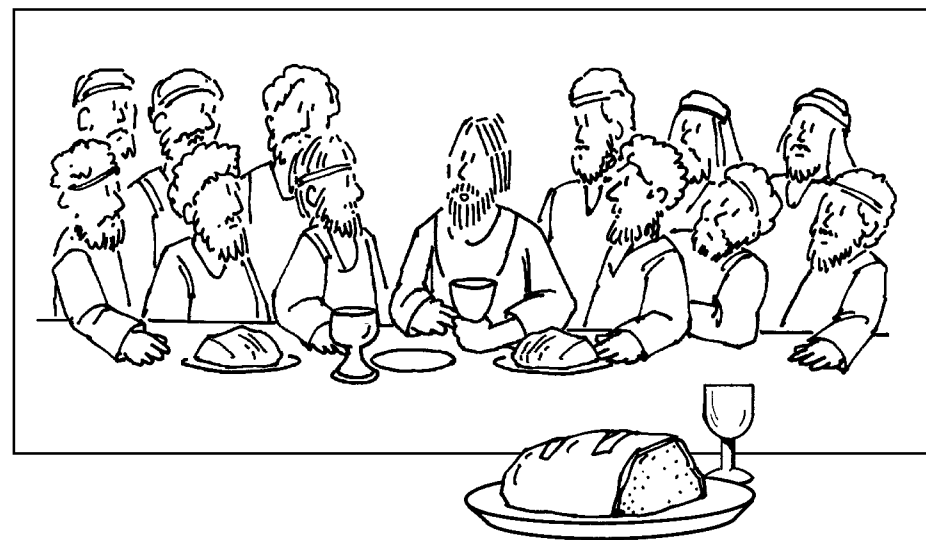
Ages 3+

April 13, 2025 • Luke 22:14-71; 23:1-56

The Hours Before Jesus' Death

Jesus ate a special meal with His disciples. It was Passover.

Trace the letters.



Passover

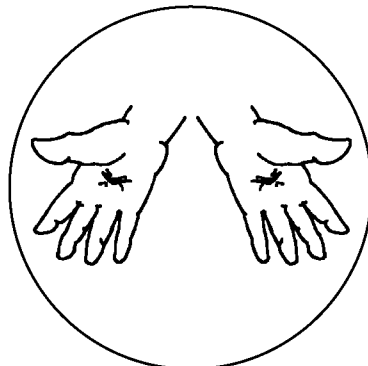
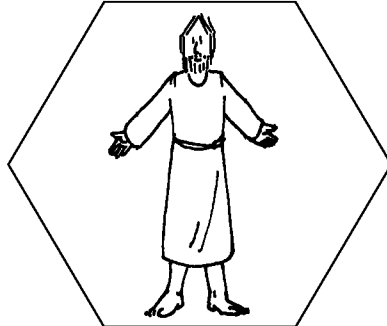
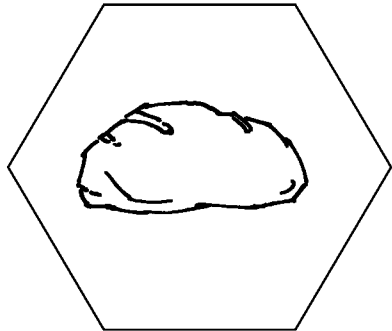


Enter your **SECRET CODE** to unlock games @
games.childrensbulletins.com

SECRET CODE
CSRZ94

Jesus shared bread and wine
with His disciples. It was to
remember His body and blood.

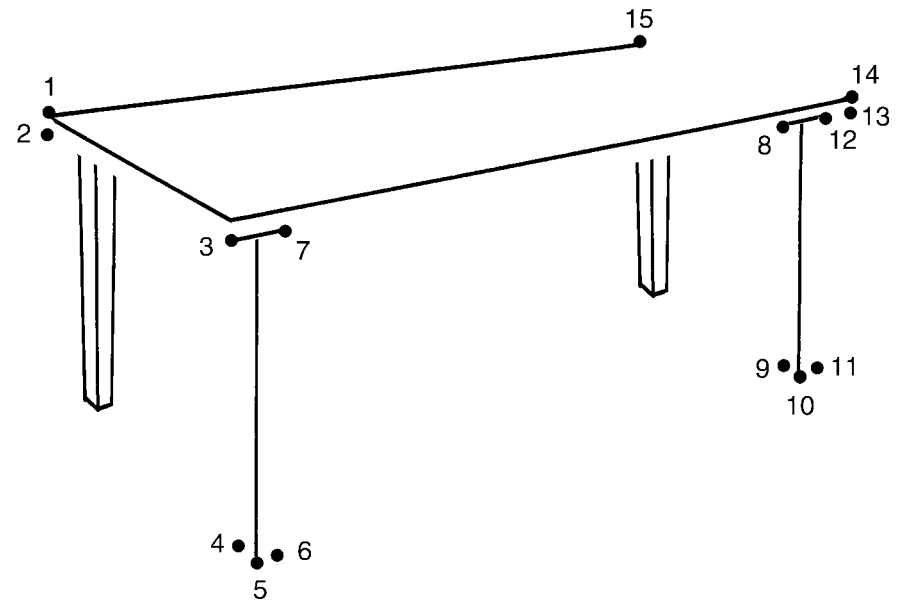
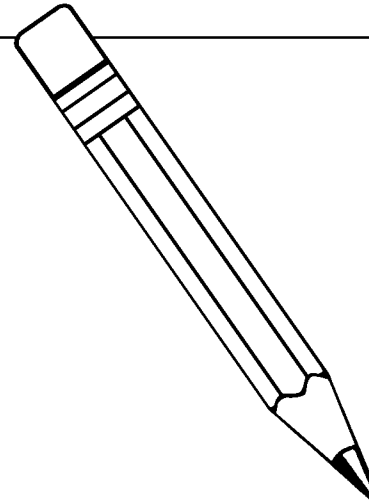
Match the shapes.



Jesus knew that the disciple who would
betray Him was sitting at the table.

Connect the dots.

1 2 3 4 5 6 7 8 9 10 11 12 13 14 15



CELEBRATING REEDLEY MB CHURCH'S 120 YEARS (1905 - 2025) OF

GOD'S GRACE & FRUITFULNESS

1905 – 2025

PONDERING SOME TRANSITIONS

IN THE YEARS 1905- 1920

1. Hitching posts to auto parking. (see photo)
2. Reedley area electrification in 1907.
3. Moves from homes to school to RMBC property.
4. Five pastoral leadership changes.
5. Three building projects. (200, 400, 1200 capacities)
6. Christian ed. past S.S. with start of "German School".
7. Hosted 1st Pacific District Conference in 1912.
8. World War I 1914-1918 & some German to English change.



The D. M. Enns Family Ready for Church in 1912 (Early Day Transportation)

**9. 1919 Flu pandemic with no loss of life for anyone
In RMBC!**

**10. RMBC better organized and incorporated with the
State in 1920 with Pastor D. C. Eitzen leadership.**

NEXT WEEK- RMBC in the "Roaring 1920's".

Compiled by Don Enns

CELEBRATING REEDLEY MB CHURCH'S 120 YEARS (1905 - 2025) OF

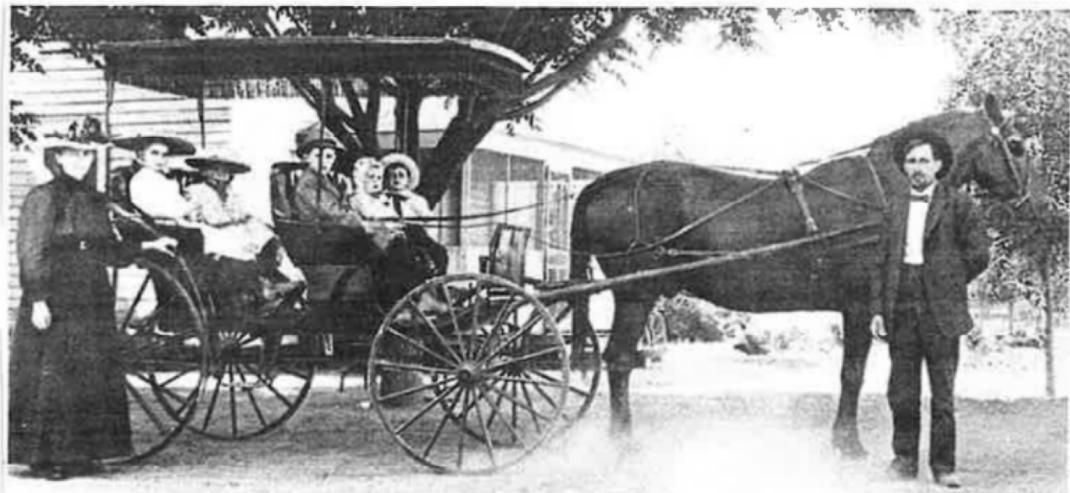
GOD'S GRACE & FRUITFULNESS

1905 – 2025

PONDERING SOME TRANSITIONS

IN THE YEARS 1905- 1920

1. Hitching posts to auto parking. (see photo)
2. Reedley area electrification in 1907.
3. Moves from homes to school to RMBC property.
4. Five pastoral leadership changes.
5. Three building projects. (200, 400, 1200 capacities)
6. Christian ed. past S.S. with start of "German School".
7. Hosted 1st Pacific District Conference in 1912.
8. World War I 1914-1918 & some German to English change.



The D. M. Enns Family Ready for Church in 1912 (Early Day Transportation)

**9. 1919 Flu pandemic with no loss of life for anyone
In RMBC!**

**10. RMBC better organized and incorporated with the
State in 1920 with Pastor D. C. Eitzen leadership.**

NEXT WEEK- RMBC in the "Roaring 1920's".

Compiled by Don Enns