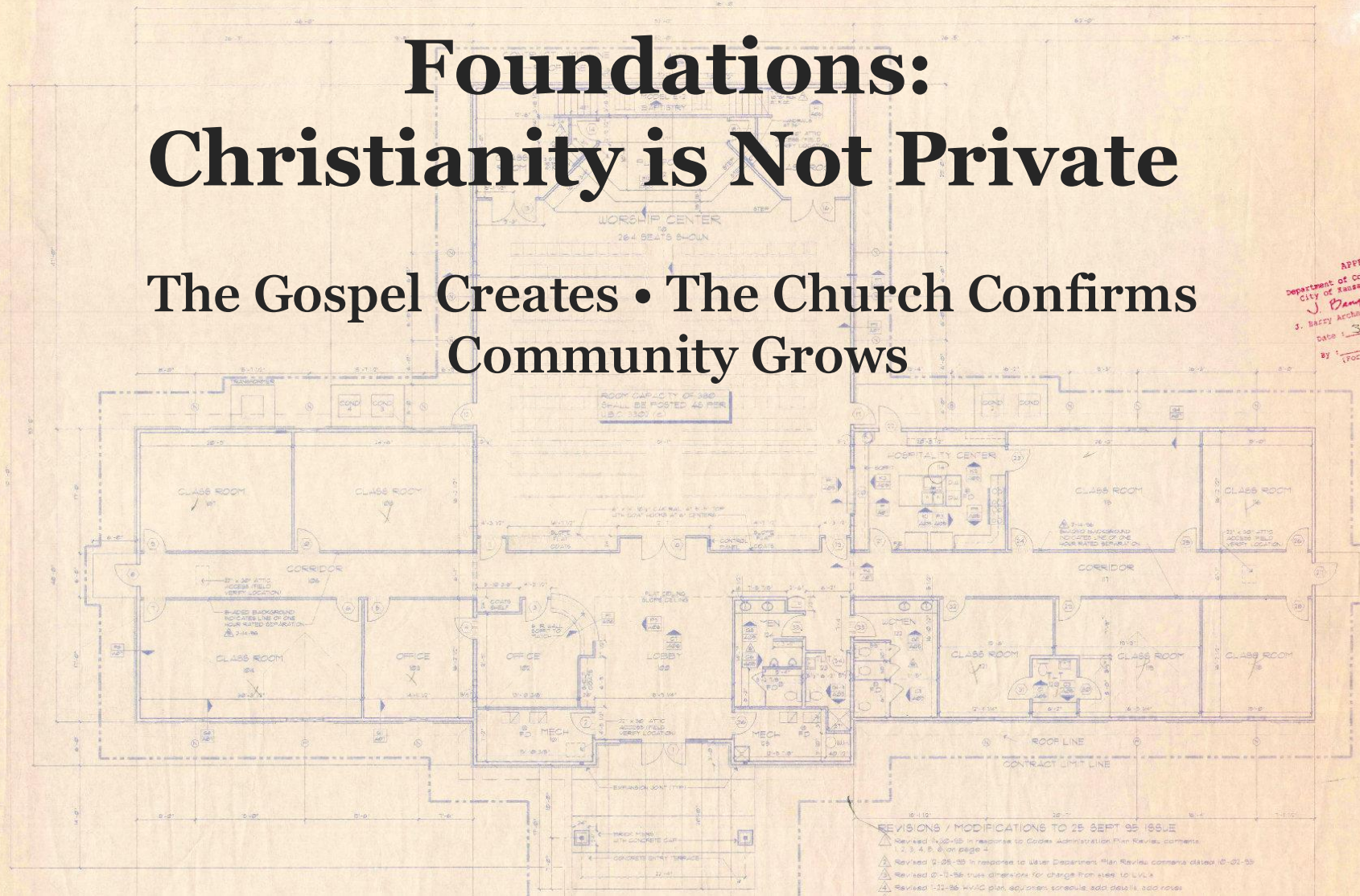


# HOPE FELLOWSHIP CHURCH

Kansas City, Missouri

## Foundations: Christianity is Not Private The Gospel Creates • The Church Confirms Community Grows



### DRAWING SCHEDULE

ARCHITECTURAL	
A-01	FLOOR PLAN
A-02	FOOTING AND FOUNDATION PLAN
A-03	EXTERIOR ELEVATIONS
A-04	SCHEDULES
A-05	INTERIOR ELEVATIONS
A-06	BUILDING CROSS SECTIONS
A-07	CONSTRUCTION DETAILS
A-08	CONSTRUCTION DETAILS
A-09	SITE PLAN AND DETAILS
A-10	GRADING / LANDSCAPE PLAN
PLUMBING	
P-01	PLUMBING SYSTEMS
MECHANICAL	
M-01	MECHANICAL SYSTEMS
ELECTRICAL	
E-01	ELECTRICAL SYSTEMS

### CODE INFORMATION

ADDRESS: 8350 NORTH CONANT AVENUE  
KANSAS CITY, MISSOURI  
LEGAL DESCRIPTION:  
LOT 4, EXHIBIT OAKS  
FIRST PLAT  
ZONING: R (RESIDENTIAL) 10  
OCCUPANCY GROUP: A (ASSEMBLY) DIVISION  
B, A  
WITHOUT A LEGITIMATE STAGE  
CONSTRUCTION: TYPE V ONE HOUR  
BUILDING TO BE ONE HOUR FIRE RESISTIVE  
CONSTRUCTION THROUGHOUT

### OWNERSHIP AND USE OF DOCUMENTS

DRAWINGS, SPECIFICATIONS AND OTHER DOCUMENTS  
FURNISHED BY THE DESIGN/BUILDER ARE INSTRUMENTS  
OF SERVICE AND SHALL NOT BE LOANED, REPRODUCED,  
COPIED, EITHER WHOLLY OR IN PART, OR USED FOR ANY  
OTHER PROJECT WITHOUT THE WRITTEN CONSENT OF  
THE DESIGN/BUILDER. THE DESIGN/BUILDER SHALL NOT BE  
RESPONSIBLE FOR ANY CHANGES OR MODIFICATIONS  
MADE TO THESE DOCUMENTS WITHOUT THE WRITTEN  
CONSENT OF THE DESIGN/BUILDER.

**Jim Brown**  
Construction

HOLDREGE, NEBRASKA 68088-3444

### DESIGN/BUILD CONTRACTOR

JIM BROWN CONSTRUCTION INC.  
3838 DEWESTER ROAD  
HOLDREGE, NE 68088  
DESIGN CONSULTANT: TODD BROWN  
PROJECT SUPERVISOR: BRAD MUELLER  
JOBSITE PHONE: (308) 938-0807

### FLOOR PLAN

SCALE: 1/8" = 1'-0"

**HOPE FELLOWSHIP  
CHURCH**  
KANSAS CITY, MISSOURI

APPROVED  
Department of Codes Administration  
City of Kansas City, Missouri  
J. Barry Archer, P.E., CEO, Director  
Date: 3-21-96  
By: [Signature]  
(For the Director)

REVISIONS / MODIFICATIONS TO 25 SEPT 95 ISSUE  
1. Revised 10-20-95 in response to Codes Administration Plan Review comments  
2. 3, 4, 5, 6 on page 4  
3. Revised 12-05-95 in response to Water Department Plan Review comments dated 10-02-95  
4. Revised 12-11-95 true dimensions for change from steel to LVL's  
5. Revised 1-11-96 HVAC plan, equipment, schedule, add details, add notes



# The Big Idea

## Christianity is not merely personal or private.

1. God saves us by the gospel.
2. God places us in the church.
3. God grows us through community.

### INSTRUCTIONS TO BIDDERS:

THE WORK REQUIRED UNDER THE HVAC CONTRACT SHALL INCLUDE ALL MATERIAL, LABOR, EQUIPMENT AND SERVICES NECESSARY AND REASONABLE INCIDENTAL TO THE PROPER COMPLETION OF THE SYSTEM AND ALL SPECIAL WORK AS HEREIN SPECIFIED AND AS INDICATED ON THE DRAWINGS. IN THE CASE OF A DISCREPANCY BETWEEN DRAWINGS AND SPECIFICATIONS OR WHEN THERE IS A DISCREPANCY BETWEEN QUANTITY OF WORK AND OR BETTER QUALITY SHALL BE USED FOR ESTIMATING AND THE MATTER BROUGHT TO THE DESIGN-BUILDER'S ATTENTION FOR A WRITTEN DECISION.

BIDDERS ARE ADVISED TO VISIT THE SITE AND INSPECT THE SAME PRIOR TO ALL SUBMITTALS AND SHALL DO SO IN NO WAY RELIEVE THE SUCCESSFUL BIDDER FROM THE NECESSITY OF FURNISHING A MATERIAL OR MEMORANDUM IN WRITING. BIDDERS SHALL BE REQUIRED TO COMPLETE THE WORK IN ACCORDANCE WITH THE INTENT AND MEANING OF THE DRAWINGS AND SPECIFICATIONS. THOUGH ADDITIONAL COST TO THE OWNER.

### GENERAL REQUIREMENTS:

ALL OUTWORK FITTING, EQUIPMENT AND MATERIAL TO BE INSTALLED ON THE JOB SITE FOR ANY PERIOD OF TIME SHALL BE PROTECTED FROM THE WEATHER AND THE ELEMENTS IN A MANNER THAT IS ACCEPTABLE TO THE DESIGN-BUILDER.

THE HVAC CONTRACTOR SHALL EXECUTE THIS WORK IN ACCORDANCE WITH THE LOCAL BUILDING CODES AND ORDINANCES AS PERTAINING TO THE SCOPE AND THE CURRENT LIFE AND SAFETY CODE.

ALL WORK SHALL ALSO AS A MINIMUM BE IN ACCORDANCE WITH CURRENT NATIONAL FIRE PROTECTION ASSOCIATION STANDARDS.

THE HVAC CONTRACTOR SHALL BECOME ACQUAINTED WITH THE LOCAL CODES AND IN CASE OF A DISCREPANCY BETWEEN DRAWINGS OR SPECIFICATIONS AND THE LOCAL CODES, THE HVAC CONTRACTOR SHALL USE THE CODE REQUIREMENTS. THE GREATER QUANTITY OF WORK AND MATERIAL AND OR BETTER QUALITY SHALL BE USED FOR ESTIMATING AND THE MATTER BROUGHT TO THE DESIGN-BUILDER'S ATTENTION FOR A WRITTEN DECISION.

NO SMOKE IS ALLOWED INSIDE THE BUILDING ONCE THE SMOKEING IS PLACED ON THE ROOF. ALL CONTRACTORS ARE RESPONSIBLE TO NOTIFY THEIR EMPLOYEES OF THIS PROVISION. FAILURE TO COMPLY WILL RESULT IN TERMINATION OF YOUR RESPECTIVE CONTRACTS.

### SPECIFICATIONS:

THE HVAC CONTRACTOR SHALL BE RESPONSIBLE FOR OBTAINING ALL NECESSARY PERMITS AND APPROVALS. THE HVAC CONTRACTOR SHALL BE RESPONSIBLE FOR THE PROPER INSTALLATION OF ALL WORK. THE HVAC CONTRACTOR SHALL BE RESPONSIBLE FOR THE PROPER INSTALLATION OF ALL WORK. THE HVAC CONTRACTOR SHALL BE RESPONSIBLE FOR THE PROPER INSTALLATION OF ALL WORK.

THE HVAC CONTRACTOR SHALL BE RESPONSIBLE FOR THE PROPER INSTALLATION OF ALL WORK. THE HVAC CONTRACTOR SHALL BE RESPONSIBLE FOR THE PROPER INSTALLATION OF ALL WORK. THE HVAC CONTRACTOR SHALL BE RESPONSIBLE FOR THE PROPER INSTALLATION OF ALL WORK.

### LOCAL UTILITY:

MISSOURI GAS ENERGY (800) 756-5200  
CONTACT: HAROLD ROBERTS - EXTENSION 5664

CONTACT: HAROLD ROBERTS - EXTENSION 5664

CONTACT: HAROLD ROBERTS - EXTENSION 5664

CONTACT: HAROLD ROBERTS - EXTENSION 5664

CONTACT: HAROLD ROBERTS - EXTENSION 5664

CONTACT: HAROLD ROBERTS - EXTENSION 5664

CONTACT: HAROLD ROBERTS - EXTENSION 5664

CONTACT: HAROLD ROBERTS - EXTENSION 5664

CONTACT: HAROLD ROBERTS - EXTENSION 5664

CONTACT: HAROLD ROBERTS - EXTENSION 5664

CONTACT: HAROLD ROBERTS - EXTENSION 5664

CONTACT: HAROLD ROBERTS - EXTENSION 5664

CONTACT: HAROLD ROBERTS - EXTENSION 5664

CONTACT: HAROLD ROBERTS - EXTENSION 5664

CONTACT: HAROLD ROBERTS - EXTENSION 5664

CONTACT: HAROLD ROBERTS - EXTENSION 5664

CONTACT: HAROLD ROBERTS - EXTENSION 5664

CONTACT: HAROLD ROBERTS - EXTENSION 5664

CONTACT: HAROLD ROBERTS - EXTENSION 5664



# I. The Gospel Creates

## SPECIFICATIONS

**00610 WOOD WINDOWS**  
SEE SCHEDULE ON DRAWINGS.  
**00612 FINISH HARDWARE**  
SEE SCHEDULE AND SPECIFICATIONS ON DRAWINGS.  
**00800 GLAZING**  
1/4" CLEAR LITE GLASS WHERE NOTED  
1/4" CLEAR LITE GLASS OTHERWISE  
1/2" CLEAR INSULATED WINDOW GLASS

**00560 GYPSUM BOARD SYSTEMS**  
5/8" OR 1/2" WOOD STUD FRAMING, WOOD BLOCKING  
AS REQUIRED BEHIND AS REQ'D 5/8" FINISHED GYPSUM  
BOARD, USG #23, #23, 502 A TRIM CONTROL JOINTS, 28  
NO. 10 OR 12 LONG DENIS BLANK 1/4" RECES  
POLYURETHANE VAPOR BARRIER AT CEILING, QUALITY  
CONTROL - USG GYPSUM CONSTRUCTION HANDBOOK

**ONE HOUR INTERIOR WALLS**  
ONE LAYER 5/8" TYPE X GYPSUM WALL BOARD AP-  
PLIED PARALLEL WITH OR AT RIGHT ANGLES TO EACH  
SIDE OF 2X4 WOOD STUDS SPACED @ 16" O.C. WITH NO  
COATED WALLS WITH INTERIOR SURFACES. INTERIOR SURFACES  
COATED WALLS NEEDED TO TOP AND BOTTOM  
PLATES @ 16" O.C. STAGGER JOINTS @ 16" O.C. EACH  
SIDE (LOAD BEARING) U.S.G. 5/8" (8'4")

**ONE HOUR EXTERIOR WALL (PLASTER)**  
2X6 WOOD STUDS @ 16" O.C. WITH 5/8" GYPSUM SHEATHING  
AND 1/4" EXTERIOR GYPSUM PLASTER 1/2" THICK  
MEASURED FROM THE FACE OF STUDS ON THE EXTERIOR  
OR SURFACE WITH INTERIOR SURFACES. INTERIOR SURFACES  
REQUIRED FOR INTERIOR WOOD STUD PARTITIONS  
PLASTER 1/2" THICK FOR SMOOTH COAT AND 1/2" FOR  
BROKEN COAT BY VOLUME CORRECT TO GROUND  
U.S.G. 11-13 (8'4")

**ONE HOUR EXTERIOR WALL (BRICK)**  
1 1/4" x 3 1/4" CLAY FACE BRICK WITH CORNER MOVER  
OVER 5/8" GYPSUM SHEATHING ON EXTERIOR SURFACE  
OF 2X6 WOOD STUDS @ 16" O.C. AND ONE LAYER 5/8"  
TYPE X GYPSUM WALL BOARD ON INTERIOR SURFACE  
SHEATHING PLACED HORIZONTALLY OR VERTICALLY  
WITH VERTICAL JOINTS OVER STUDS NEEDED @ 16" O.C. WITH  
3/4" BY NO. 10 GAUGE BY 1" HEAVY GALVANIZED  
STEEL WALL BOARD PLACED HORIZONTALLY OR VERTI-  
CALLY AND NEEDED @ 16" O.C. WITH NO WALLBOARD NAILS  
ALL VERTICAL JOINTS OVER STUDS, JOINTS TAPED AND  
FINISHED WITH COMPOUND, NAILHEADS COVERED WITH  
JOINT COMPOUND, NO. 10 GAUGE CORNERED GAL-  
VANIZED STEEL WALL 7/8" DIA. BY 5/8" ATTACHED TO  
EACH BRICK WITH TWO NO. 10 COUPLERS OR WALLBOARD  
NAILS EVERY SIXTH COURSE OF BRICK.  
U.S.G. 11-13 (8'4")

**STRUCTURAL FRAMING ELEMENTS**  
MULTIPLE LAYERS OF 2" GYPSUM BOARDING AND AD-  
HEVISELY SECURED TO COLUMN FLANGES AND SUC-  
CESSIVELY LAYERS OF WALLBOARDING APPLIED WITHOUT  
HORIZONTAL JOINTS. CORNER EDGES OF EACH LAYER  
STAGGERED. WALL BOARD LAYER BELOW OUTER  
LAYER REQUIRED TO COLUMN FLANGES. NO. 10  
GAUGE WIRE TIES SPACED @ 16" O.C. EXPOSED CORNERS  
TAPED AND FINISHED. COVER PROVIDES ONE HOUR  
PROTECTION. U.S.G. 11-13 (8'4")

**ONE HOUR CEILING ASSEMBLY**  
CEILING: TWO LAYERS OF 5/8" TYPE X GYPSUM WALL  
BOARD APPLIED PERPENDICULAR TO TRUSSES. BASE  
LAYER END JOINTS STAGGERED 24" AND ALL FACE  
BOARD JOINTS OFFSET 24" FROM THE JOINTS OF THE  
BASE LAYER. BASE LAYER ATTACHED TO BOTTOM  
CHORD WITH 1/4" TYPE 8 DRYWALL BOLTS @ 24" O.C.  
FACE LAYER ATTACHED WITH 1/4" TYPE 8 DRYWALL  
BOLTS @ 24" O.C. IN ADDITION, 1/2" TYPE 8 DRYWALL  
BOLTS SPACED @ 16" O.C. ARE PLACED 3" BACK FROM  
EACH SIDE OF FACE LAYER AND TOP OF TRUSSES.  
CHORD AND WEB MEMBERS ARE FINISH  
GRADED FROM 2 X 4 LUMBER WITH 10 GAUGE STEEL CON-  
VECTOR PLATES TO PROVIDE A MINIMUM DESIGN LENGTH  
OF 18". PLATE DESIGN VALUES SHALL BE BASED  
ON A SAFETY FACTOR OF 4. TRUSSES ARE SPACED  
A MINIMUM OF 24" O.C. AND HAVE A MINIMUM DEPTH OF  
2" U.S.G. 2-11 (8'4")

**FIRE STOP ASSEMBLY**  
ALL PENETRATIONS OF FIRE RESISTIVE MEMBRANES  
SHALL BE SEALED WITH 1/2" INTERLAYER WITH 1/2"  
CAULK TO PROVIDE A ONE HOUR FIRE RATED AS-  
SEMBLY. U.S.G. 2-11 (8'4")

**00600 REBUILT FLOORING**  
1/2" THICK TYPE X GYPSUM BOARD, VINYL  
COMPOSITION TILE WHITE LATEX FILLER AND ADHESIVE  
AND ASPHALTIC CUT BACK ON CONCRETE SLAB ON  
GRADE WITH SPECIFIED PRIMER. ALSO REQUIRED: FLOORING  
FLOOR PREPARATION: 4" X 1/8" THICK TOP SET VINYL  
GOVE BASE. VINYL TRANSITION STRIPS AS REQUIRED

**Jim Brown**  
Construction

APPROVED  
Department of Codes Administration  
City of Kansas City, Missouri  
J. Barry Archer, Director

3-21-46  
By: [Signature]

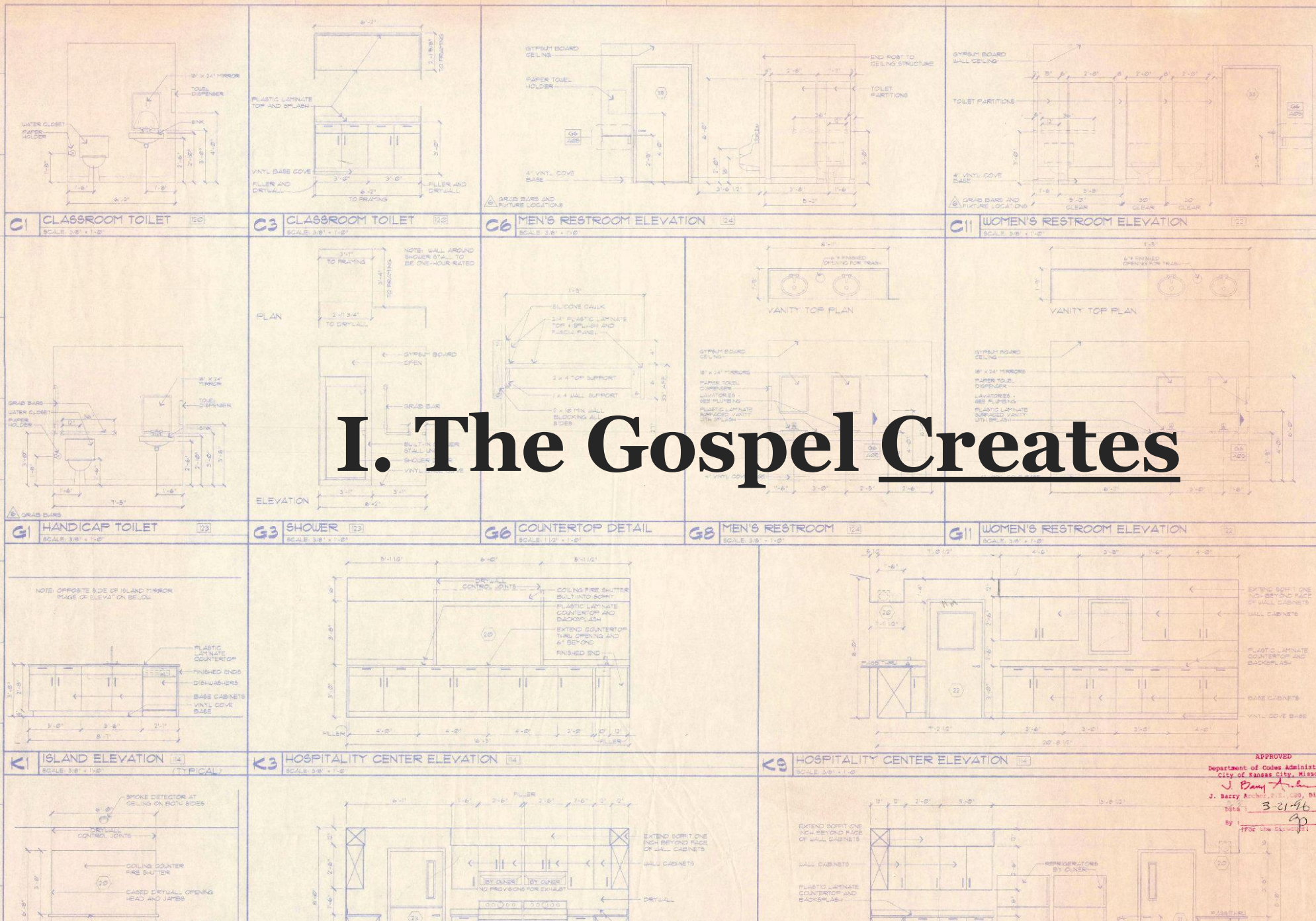
HOLDREGE, NEBRASKA 68031 935-4544

INTERIOR ELEVATIONS

SCALE: AS NOTED

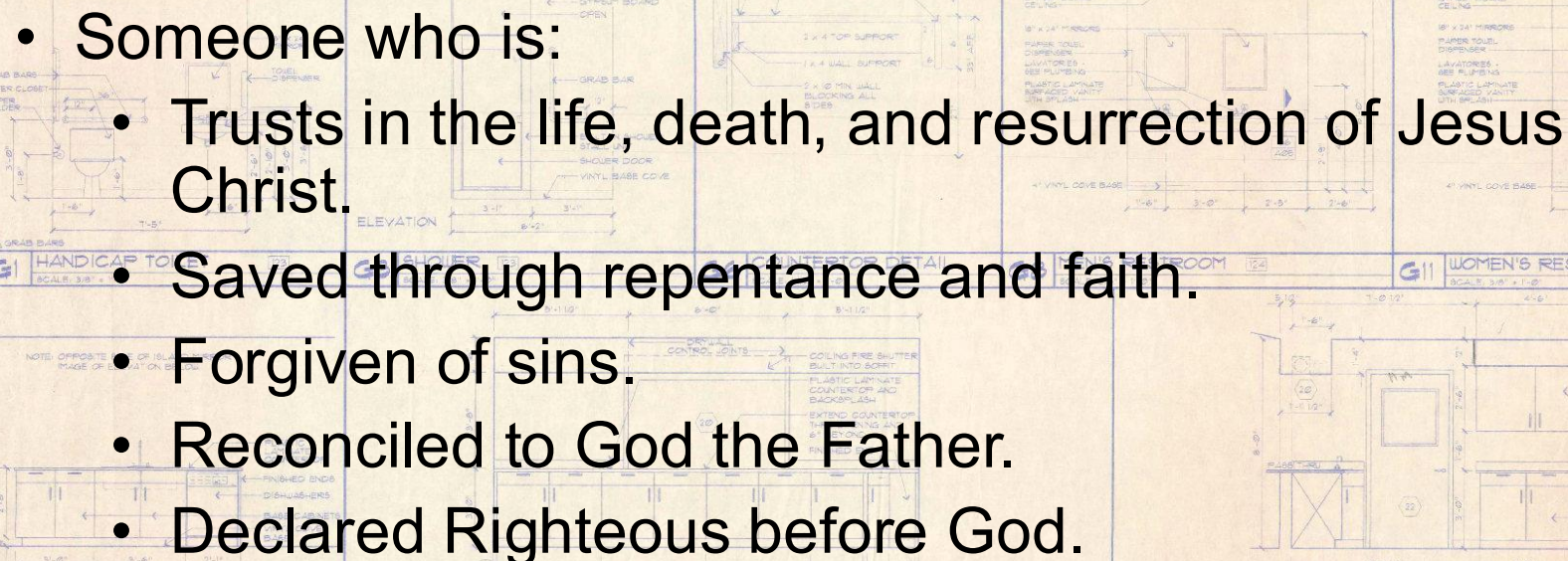
**HOPE FELLOWSHIP**  
**CHURCH**  
KANSAS CITY, MISSOURI

Dennis J. Lyon, Architects





# What is a Christian?

- 
- The background of the slide features architectural blueprints. On the left, there is a 'HANDICAP TOILET' plan with dimensions like 3'-0" and 3'-6". In the center, a 'SHOWER' plan shows a 6'-0" x 8'-0" area with a 'SHOWER DOOR' and 'VINYL BASE COVE'. To the right, a 'KITCHEN' plan includes a 'COUNTERTOP DETAIL' and 'WOMEN'S RESTROOM' area. Various technical notes and material specifications are scattered throughout the drawings.
- Someone who is:
  - Trusts in the life, death, and resurrection of Jesus Christ.
  - Saved through repentance and faith.
  - Forgiven of sins.
  - Reconciled to God the Father.
  - Declared Righteous before God.

Dennis J. Lyon, Architects



# The Gospel Creates a People

## Not Just Individuals

- Reconciliation to God produces reconciliation to others.
- Loving God and loving others is inseparable.
- The first commandment produces the second.

... love the Lord your God with all your heart, soul, and mind *and* love your neighbor as yourself (see Matt. 22:34–40).

## The gospel does not just save *you* – it creates *us*.

### SPECIFICATIONS

<b>00610 WOOD WINDOWS</b> SEE SCHEDULE ON DRAWINGS.	<b>00610 FINISH HARDWARE</b> SEE SCHEDULE AND SPECIFICATIONS ON DRAWINGS.
<b>00800 GLAZING</b> 1/4" CLEAR LITE GLASS WHERE NOTED 1/4" CLEAR LITE GLASS OTHERWISE 1/2" CLEAR INSULATED WINDOW GLASS	<b>00500 GYPSUM BOARD SYSTEMS</b> 3/4" OR 5/8" WOOD STUD FRAMING, WOOD BLOCKING AS REQUIRED. BRANCHES REQUIRED BY INSULATED GYPSUM BOARD. USE 1/2" OR 3/4" TRIM CONTROL JOINTS. AS NOTED. WALLS RECOMMENDED TAPPED SANDING. 4 MIL POLYURETHANE VAPOR BARRIER AT CEILING. QUALITY CONTROL - USE GYPSUM CONSTRUCTION HANDBOOK.
<b>ONE HOUR INTERIOR WALLS</b> ONE 5/8" TYPE X GYPSUM WALL BOARD AP- PLIED PARALLEL WITH OR AT RIGHT ANGLES TO EACH SIDE OF 2x4x8 WOOD STUDS SPACED 16" O.C. WITH NO COATED WALLS 1/2" LONG SPANS. BULKY INFILLERS O.C. WALLBOARD NAIL TO TOP AND BOTTOM PLATES OF O.C. STAGGER JOINTS. 1/2" O.C. EACH SIDE (LOAD BEARING) UBC 6-13 (8-11) 5.	<b>ONE HOUR EXTERIOR WALL (PLASTER)</b> 2x6 WOOD STUDS 16" O.C. WITH 5/8" GYPSUM SHEATHING AND 1/4" EXTERIOR GYPSUM PLASTER. 1/2" TYPE X GYPSUM BOARD NAIL TO INTERIOR SURFACE. SHEATHING PLACED HORIZONTALLY OR VERTICALLY. VERTICAL JOINTS OVER STUDS NAIL TO O.C. WITH 3/4" BY 1/2" GYPSUM. 1/2" HEBB SAND. SAND- FILL. WALLBOARD PLACED HORIZONTALLY OR VERTI- CALLY AND NAIL TO O.C. WITH NO WALLBOARD NAILS. ALL VERTICAL JOINTS OVER STUDS. JOINTS TAPED AND FINISHED WITH COMPOUND. NAILHEADS COVERED WITH JOINT COMPOUND. NO. 10 GAUGE CORRUGATED GAL- VANIZED STEEL WALL 1/8" 2x4 BY 5/8" ATTACHED TO EACH BRD WITH 8x6x6 COOLER OR WALLBOARD NAILS EVERY SIXTH COURSE OF BRICK. UBC 11-13 (8-11) 5.
<b>ONE HOUR EXTERIOR WALL (BRICK)</b> 1 1/4" x 3 1/4" CLAY FACE BRICK WITH CORNER HOLE OVER 5/8" GYPSUM SHEATHING ON EXTERIOR SURFACE OF 2x6 WOOD STUDS AT 16" O.C. AND ONE LAYER 5/8" TYPE X GYPSUM BOARD ON INTERIOR SURFACE. SHEATHING PLACED HORIZONTALLY OR VERTICALLY. VERTICAL JOINTS OVER STUDS NAIL TO O.C. WITH 3/4" BY 1/2" GYPSUM. 1/2" HEBB SAND. SAND- FILL. WALLBOARD PLACED HORIZONTALLY OR VERTI- CALLY AND NAIL TO O.C. WITH NO WALLBOARD NAILS. ALL VERTICAL JOINTS OVER STUDS. JOINTS TAPED AND FINISHED WITH COMPOUND. NAILHEADS COVERED WITH JOINT COMPOUND. NO. 10 GAUGE CORRUGATED GAL- VANIZED STEEL WALL 1/8" 2x4 BY 5/8" ATTACHED TO EACH BRD WITH 8x6x6 COOLER OR WALLBOARD NAILS EVERY SIXTH COURSE OF BRICK. UBC 11-13 (8-11) 5.	<b>STRUCTURAL FRAMING ELEMENTS</b> MULTIPLE LAYERS OF GYPSUM WALLBOARD AND AD- HEVELLY SECURED TO COLUMN FLANGES AND SUC- CESSIVE LAYERS. WALLBOARD JAMES WALLBOARD HORIZONTAL JOINTS. CORNER EDGES OF EACH LAYER STAGGERED. WALLBOARD LAYER BELOW OUTER LAYER REQUIRED TO COLUMN WITH DOUBLE NO. 10 GAUGE WIRE TIES SPACED 16" O.C. EXPOSED CORNERS TAPED AND TREATED. COVER PROVIDES ONE HOUR PROTECTION. UBC 11-13 (8-11) 5.
<b>ONE HOUR CEILING ASSEMBLY</b> CEILING: TWO LAYERS OF 5/8" TYPE X GYPSUM WALL- BOARD APPLIED PERPENDICULAR TO TRUSSES. BASE LAYER JOINTS STAGGERED 24" AND ALL FACE LAYER JOINTS ORBIT 24" FROM THE JOINTS OF THE BASE LAYER. BASE LAYER ATTACHED TO BOTTOM CHORD WITH 1/4" TYPE X DRYWALL BONES 24" O.C. FACE LAYER ATTACHED WITH 1/4" TYPE X DRYWALL BONES 24" O.C. IN ADDITION, 1/2" TYPE X DRYWALL BONES SPACED 12" O.C. ARE PLACED 1" BACK FROM EACH SIDE OF FACE LAYER AND TOP.	<b>FIRE STOP ASSEMBLY</b> ALL PENETRATIONS OF FIRE RESISTIVE MEMBRANES SHALL BE SEALED WITH GYPSUM OR FIRE RESISTIVE CAULK TO PROVIDE A ONE HOUR FIRE RATED AS- SEMBLY. 5.
<b>00600 REBUILT FLOORING</b> 1/2" 1x6 TYPICAL FLOORING MATERIAL, VINYL COMPOSITION TILE WHITE LATEX FILLER AND ADHESIVE NO ASPHALT CUT BACK ON CONCRETE SLAB ON GRADE WITH SPECIFIED FILLER. ALL FLOORING INCLUDING FLOOR PREPARATION. 4" X 1/8" THICK TOP SET VINYL GOVE BASE. VINYL TRANSITION STRIPS AS REQUIRED.	

**Jim Brown**  
Construction

APPROVED  
Department of Codes Administration  
City of Kansas City, Missouri  
J. Barry Anderson  
J. Barry Anderson, Director  
Date: 3-21-96  
By: [Signature]

HOLDREGE, NEBRASKA 68031 985-4544

INTERIOR ELEVATIONS

SCALE: AS NOTED

**HOPE FELLOWSHIP**  
**CHURCH**  
KANSAS CITY, MISSOURI

Dennis J. Lyon, Architects



# II. The Church Confirms

## SPECIFICATIONS

**00610 WOOD WINDOWS**  
SEE SCHEDULE ON DRAWINGS.  
**00612 FINISH HARDWARE**  
SEE SCHEDULE AND SPECIFICATIONS ON DRAWINGS.  
**00660 GLAZING**  
1/4" CLEAR GLASS WHERE NOTED  
1/4" CLEAR LAMINATED SAFETY GLASS WITH 1/8" OF FLOOR  
1/4" CLEAR PLATE GLASS OTHERWISE  
1/2" CLEAR INSULATED WINDOW GLASS

**00660 GYPSUM BOARD SYSTEMS**  
5/8" OR 1/2" WOOD STUD FRAMING, WOOD BLOCKING  
AS REQUIRED BEHIND AS REQ'D 5/8" FINISHED GYPSUM  
BOARD, USG 1203 1203 502 A TRIM CONTROL JOINTS, 28  
NO. 10 OR 12 LONG DENIS BLANK 1/4" RECES  
POLYURETHANE VAPOR BARRIER AT CEILING, QUALITY  
CONTROL - USG GYPSUM CONSTRUCTION HANDBOOK

**ONE HOUR INTERIOR WALLS**  
ONE LAYER 5/8" TYPE X GYPSUM WALL BOARD AP-  
PLIED PARALLEL WITH OR AT RIGHT ANGLES TO EACH  
SIDE OF 2X4 WOOD STUDS SPACED 16" O.C. WITH NO  
COATED WALLS WITH INTERIOR SURFACES BLANK 1/4" RECES  
1/2" WOOD STUDS NAIL TO TOP AND BOTTOM  
PLATES AT 16" O.C. STAGGER JOINTS 16" O.C. EACH  
SIDE (LOAD BEARING) U.S.G. 8-13 (8-11) S.

**ONE HOUR EXTERIOR WALL (PLASTER)**  
2X6 WOOD STUDS 16" O.C. WITH 5/8" GYPSUM SHEATHING  
AND 1/4" EXTERIOR GYPSUM PLASTER 1/2" THICK  
MEASURED FROM THE FACE OF STUDS ON THE EXTERIOR  
OR SURFACE WITH INTERIOR SURFACES BLANK 1/4" RECES  
REQUIRED FOR INTERIOR WOOD STUD PARTITIONS  
PLASTER 1/2" THICK FOR SMOOTH COAT AND 1/2" FOR  
BROKEN COAT BY VOLUME, CORNER TO CORNER  
U.S.G. 11-13 (8-11) S.

**ONE HOUR EXTERIOR WALL (BRICK)**  
1 1/4" X 3 1/4" CLAY FACE BRICK WITH CORNER MOVER  
OVER 5/8" GYPSUM SHEATHING ON EXTERIOR SURFACE  
OF 2X6 WOOD STUDS AT 16" O.C. AND ONE LAYER 5/8"  
TYPE X GYPSUM WALL BOARD ON INTERIOR SURFACE  
SHEATHING PLACED HORIZONTALLY OR VERTICALLY  
WITH VERTICAL JOINTS OVER STUDS NAIL TO 16" O.C. WITH  
3/4" BY NO. 10 GAUGE BY 1" HEAVY GALVANIZED  
NAILS. WALL BOARD PLACED HORIZONTALLY OR VERTI-  
CALLY AND NAIL TO 16" O.C. WITH NO WALLBOARD NAILS  
ALL VERTICAL JOINTS OVER STUDS. JOINTS TAPED AND  
FINISHED WITH COMPOUND. NAILHEADS COVERED WITH  
JOINT COMPOUND. NO. 10 GAUGE CORRUGATED GAL-  
VANIZED STEEL WALL 1/8" 2X4 BY 5/8" ATTACHED TO  
EACH BRICK WITH NO. 10 COUPLER OR WALLBOARD  
NAILS EVERY SIXTH COURSE OF BRICK.  
U.S.G. 11-13 (8-11) S.

**STRUCTURAL FRAMING ELEMENTS**  
MULTIPLE LAYERS OF 2" MINIMUM THICKNESS AND AD-  
HEAVILY SECURED TO COLUMN FLANGES AND SUC-  
CESSIVE LAYERS. WALLBOARD APPLIED WITHOUT  
HORIZONTAL JOINTS. CORNER EDGES OF EACH LAYER  
STAGGERED. WALL BOARD LAYER BELOW OUTER  
LAYER REQUIRED TO COLUMN WITH DOUBLED NO. 10  
GAUGE WIRE TIES SPACED 16" O.C. EXPOSED CORNERS  
TAPED AND FINISHED. COVER PROVIDES ONE HOUR  
PROTECTION. U.S.G. 11-13 (8-11) S.

**ONE HOUR CEILING ASSEMBLY**  
CEILING: TWO LAYERS OF 5/8" TYPE X GYPSUM WALL  
BOARD APPLIED PERPENDICULAR TO TRUSSES. BASE  
LAYER END JOINTS STAGGERED 24" AND ALL FACE  
LAYER JOINTS OFFSET 24" FROM THE JOINTS OF THE  
BASE LAYER. BASE LAYER ATTACHED TO BOTTOM  
CHORD WITH 1/4" TYPE 8 DRYWALL BOLDS 24" O.C.  
FACE LAYER ATTACHED WITH 1/4" TYPE 8 DRYWALL  
BOLDS 24" O.C. IN ADDITION, 1/2" TYPE 8 DRYWALL  
BOLDS SPACED 12" O.C. ARE PLACED 3" BACK FROM  
EACH SIDE OF EACH STUD AND CHORD.  
TRUSSES: CHORD AND WEB MEMBERS ARE FLAM-  
BULATED FROM 2 X 4 LUMBER WITH 10 GAUGE STEEL CON-  
VECTOR PLATES TO MINIMUM DESIGN LENGTH  
OF 18". PLATE DESIGN VALUES SHALL BE BASED  
UPON A SAFETY FACTOR OF 4. TRUSSES ARE BRACED  
A MINIMUM OF 24" O.C. AND HAVE A MINIMUM DEPTH OF  
2" U.S.G. 2-11 (2) S.

**FIRE STOP ASSEMBLY**  
ALL PENETRATIONS OF FIRE RESISTIVE MEMBRANES  
SHALL BE SEALED WITH 1/2" INTERLOCKING FIRE STOP  
CAULK TO PROVIDE A ONE HOUR FIRE RATED AS-  
SEMBLY. (2) S.

**00660 REBUILT FLOORING**  
1 1/2" THICK TYPE 1 REBUILT MATERIAL, VINYL  
COMPOSITION TILE WHITE LATEX FILLER AND ADHESIVE  
APPLIED IN 2" BACK ON CONCRETE SLAB ON  
GRADE WITH REBUILT FILLER. ALSO REQUIRED: REBUILT  
FLOOR PREPARATION: 4" X 1/8" THICK TOP SET VINYL  
GOVE BASE. VINYL TRANSITION STRIPS AS REQUIRED.

**Jim Brown**  
Construction

APPROVED  
Department of Codes Administration  
City of Kansas City, Missouri  
J. Barry Archer, Director  
3-21-46  
By: [Signature]

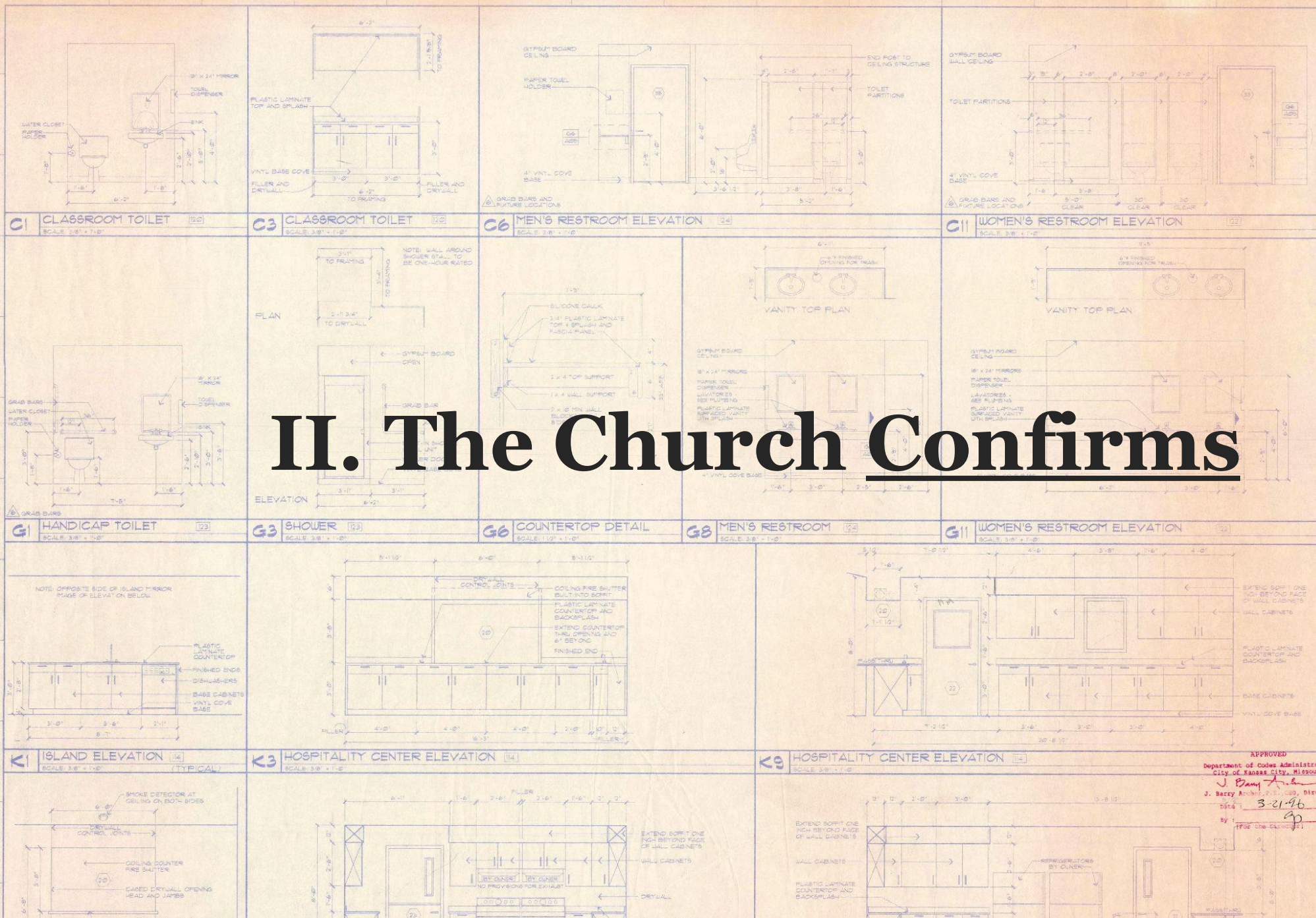
HOLDREGE, NEBRASKA 68031 935-4544

INTERIOR ELEVATIONS

SCALE: AS NOTED

HOPE FELLOWSHIP  
CHURCH  
KANSAS CITY, MISSOURI

Dennis J. Lyon, Architects





# Reconciled to God's People

## A Christian Belongs

- Union with Christ produces union with His Body.
- There is no biblical category for isolated Christians.
- Faith always moves toward commitment.

The church does not create salvation – it confirms it.

### SPECIFICATIONS

**00610 WOOD WINDOWS**  
SEE SCHEDULE ON DRAWINGS.

**00610 FINISH HARDWARE**  
SEE SCHEDULE AND SPECIFICATIONS ON DRAWINGS.

**00800 GLAZING**  
1/4" CLEAR WIRE GLASS WHERE NOTED  
1/4" CLEAR LAMINATED SAFETY GLASS WITH 1/8" OF FLOOR  
1/4" CLEAR PLATE GLASS OTHERWISE  
1/2" CLEAR INSULATED WINDOW GLASS

**00520 GYPSUM BOARD SYSTEMS**  
3/4" OR 5/8" WOOD STUD FRAMING, WOOD BLOCKING  
AS REQUIRED BRACING AS REQUIRED BY INSPECTOR'S JUDGMENT  
BOARD, 5/8" OR 3/4" LONG JOISTS, 1/2" THICK CONTROL JOISTS, 1/2"  
NO INSULATION RECOMMENDED TYPED SANDING, 4 MIL  
POLYESTER FILM VAPOR BARRIER AT CEILING, QUALITY  
CONTROL - SEE GYPSUM CONSTRUCTION HANDBOOK

**ONE HOUR INTERIOR WALLS**  
ONE 5/8" TYPE X GYPSUM WALL BOARD AP-  
PLIED PARALLEL WITH OR AT RIGHT ANGLES TO EACH  
SIDE OF 2x4x8 WOOD STUDS SPACED @ 16" O.C. WITH NO  
COATED WALLS 1/2" LONG JOISTS, 1/2" THICK CONTROL  
JOISTS, 1/2" NO INSULATION RECOMMENDED TYPED SANDING,  
4 MIL POLYESTER FILM VAPOR BARRIER AT CEILING, QUALITY  
CONTROL - SEE GYPSUM CONSTRUCTION HANDBOOK

**ONE HOUR EXTERIOR WALL (PLASTER)**  
2x6 WOOD STUDS @ 16" O.C. WITH 5/8" GYPSUM SHEATHING  
AND 1/4" EXTERIOR GYPSUM PLASTER, 1/2" THICK  
MEASURED FROM THE FACE OF STUDS ON THE EXTERIOR  
OR SURFACE OF INTERIOR GYPSUM BOARD ON INTERIOR SURFACE  
REQUIRED FOR INTERIOR WOOD STUD PARTITIONS  
PLASTER 1/2" 1/4" FOR SMOOTH COAT AND 1/2" FOR  
BROKEN COAT BY VOLUME, CORNER TO CORNER  
JBC 11-13 (8-11) 5.

**ONE HOUR EXTERIOR WALL (BRICK)**  
1 1/4" x 3 1/4" CLAY FACE BRICK WITH CORNER MOLD  
OVER 5/8" GYPSUM SHEATHING ON EXTERIOR SURFACE  
OF 2x6 WOOD STUDS @ 16" O.C. AND ONE LAYER 5/8"  
TYPE X GYPSUM BOARD ON INTERIOR SURFACE  
SHEATHING PLACED HORIZONTALLY OR VERTICALLY  
WITH VERTICAL JOINTS OVER STUDS NAIL @ 16" O.C. WITH  
3/4" BY 1/2" GAUGE BY 1/2" HEAVY GALV. STEEL NAILS  
ALL WALL BOARD PLACED HORIZONTALLY OR VERTI-  
CALLY AND NAIL @ 16" O.C. WITH 60 WALLBOARD NAILS  
ALL VERTICAL JOINTS OVER STUDS, JOINTS TAPED AND  
FINISHED WITH COMPOUND, NAILHEADS COVERED WITH  
JOINT COMPOUND, NO. 12 GAUGE CORRUGATED GAL-  
VANIZED STEEL WALL "F" 2x4 BY 5/8" ATTACHED TO  
EACH BRICK WITH 60 CORNER WALLBOARD NAILS  
NAILS EVERY SIXTH COURSE OF BRICK  
JBC 11-13 (8-11) 5.

**STRUCTURAL FRAMING ELEMENTS**  
MULTIPLE LAYERS OF GYPSUM BOARDING AND AD-  
HEVISELY SECURED TO COLUMN FLANGES AND SUC-  
CESSIVELY LAYERS, WALLBOARD APPLIED WITHOUT  
HORIZONTAL JOINTS, CORNER EDGES OF EACH LAYER  
STAGGERED, WALL BOARD LAYER BELOW OUTER  
LAYER REQUIRED TO COLUMN FLANGES, NO. 12  
GAUGE WIRE TIES SPACED @ 16" O.C. EXPOSED CORNERS  
TAPED AND TREATED, TIE COVER PROVIDES ONE HOUR  
PROTECTION, JBC 11-13 (8-11) 5.

**ONE HOUR CEILING ASSEMBLY**  
CEILING, TWO LAYERS OF 5/8" TYPE X GYPSUM WALL  
BOARD APPLIED PERPENDICULAR TO TRUSSES, BASE  
LAYER END JOINTS STAGGERED 24" AND ALL FACE  
LAYER JOINTS OFFSET 24" FROM THE JOINTS OF THE  
BASE LAYER, BASE BOARD ATTACHED TO RICE  
CHORD WITH 1/4" TYPE 8 DRYWALL BOLDS 24" O.C.  
FACE LAYER ATTACHED WITH 1/2" TYPE 8 DRYWALL  
BOLDS 24" O.C. IN ADDITION, 1/2" TYPE 8 DRYWALL  
BOLDS SPACED 24" O.C. ARE PLACED 3" BACK FROM  
EACH SIDE OF EACH END JOINT  
TRUSSES, CHORD AND WEB MEMBERS ARE FLUSH,  
CATED PLATES 1 1/2" x 4 LUMBER WITH 12 GAUGE STEEL CON-  
NECTOR OR WELDED WELDED TO EACH END  
ALL CONNECTION VALUES SHALL BE SAVED  
ALL TRUSSES OR 4" TRUSSES ARE SPACED  
@ 24" O.C. AND NO HAVE A MINIMUM DEPTH OF  
TWO INCHES ASSEMBLY

SHALL BE SEALED OFF FIRE RESISTIVE MEMBRANES  
WITH 1/4" THICK GYPSUM BOARD OR 1/4" THICK GYPSUM  
BOARD TO PROVIDE A ONE HOUR FIRE RESISTIVE AS-  
SEMBLY 5.

**00600 REBILIT FLOORING**  
1 1/2" THICK POLYESTER FILM, VINYL  
COMPOSITION TILE, WHITE LATEX FILLER AND ADHESIVE  
AND ASPHALTIC CUT BACK ON CONCRETE SLAB ON  
GRADE WITH REINFORCED FIBER, ALSO REQUIRED PREPARE  
FLOOR PREPARATION, 4" x 1/8" THICK TOP SET VINYL  
GOVE BASE, VINYL TRANSITION STRIPS AS REQUIRED



APPROVED  
Department of Codes Administration  
City of Kansas City, Missouri  
J. Barry Anderson  
J. Barry Anderson, Director  
3-21-46  
By: [Signature]

HOLDREGE, NEBRASKA 68031 935-4544  
**INTERIOR ELEVATIONS**  
SCALE: AS NOTED  
**HOPE FELLOWSHIP CHURCH**  
KANSAS CITY, MISSOURI  
Dennis J. Lyon, Architects



Dennis J. Lyon, Architects



# Universal Faith, Local Expression

## Why Membership Matters

- The universal church must take local form.
- Commitment give visible expression to invisible faith.
- Membership is not a growth strategy – it's obedience.

## The local church makes the gospel visible.

### SPECIFICATIONS

**00610 WOOD WINDOWS**  
SEE SCHEDULE ON DRAWINGS.  
**00612 FINISH HARDWARE**  
SEE SCHEDULE AND SPECIFICATIONS ON DRAWINGS.  
**00800 GLAZING**  
1.4" CLEAR LITE GLASS WHERE NOTED  
1.4" CLEAR LAMINATED SAFETY GLASS WITH 1/8" OF FLOOR  
OR CLEAR PLATE GLASS OTHERWISE.

**00900 GYPSUM BOARD SYSTEMS**  
1. GYPSUM BOARD SHALL BE STANDARD PRINTING, WOOD BLOCKING  
2. GYPSUM BOARD SHALL BE 5/8" THICK, 4' X 8' SHEETS OF 1/2"  
3. GYPSUM BOARD SHALL BE 5/8" THICK, 4' X 8' SHEETS OF 1/2"  
4. GYPSUM BOARD SHALL BE 5/8" THICK, 4' X 8' SHEETS OF 1/2"  
5. GYPSUM BOARD SHALL BE 5/8" THICK, 4' X 8' SHEETS OF 1/2"  
6. GYPSUM BOARD SHALL BE 5/8" THICK, 4' X 8' SHEETS OF 1/2"  
7. GYPSUM BOARD SHALL BE 5/8" THICK, 4' X 8' SHEETS OF 1/2"  
8. GYPSUM BOARD SHALL BE 5/8" THICK, 4' X 8' SHEETS OF 1/2"  
9. GYPSUM BOARD SHALL BE 5/8" THICK, 4' X 8' SHEETS OF 1/2"  
10. GYPSUM BOARD SHALL BE 5/8" THICK, 4' X 8' SHEETS OF 1/2"

**ONE HOUR INTERIOR WALLS**  
1. GYPSUM BOARD SHALL BE 5/8" THICK, 4' X 8' SHEETS OF 1/2"  
2. GYPSUM BOARD SHALL BE 5/8" THICK, 4' X 8' SHEETS OF 1/2"  
3. GYPSUM BOARD SHALL BE 5/8" THICK, 4' X 8' SHEETS OF 1/2"  
4. GYPSUM BOARD SHALL BE 5/8" THICK, 4' X 8' SHEETS OF 1/2"  
5. GYPSUM BOARD SHALL BE 5/8" THICK, 4' X 8' SHEETS OF 1/2"  
6. GYPSUM BOARD SHALL BE 5/8" THICK, 4' X 8' SHEETS OF 1/2"  
7. GYPSUM BOARD SHALL BE 5/8" THICK, 4' X 8' SHEETS OF 1/2"  
8. GYPSUM BOARD SHALL BE 5/8" THICK, 4' X 8' SHEETS OF 1/2"  
9. GYPSUM BOARD SHALL BE 5/8" THICK, 4' X 8' SHEETS OF 1/2"  
10. GYPSUM BOARD SHALL BE 5/8" THICK, 4' X 8' SHEETS OF 1/2"

**ONE HOUR EXTERIOR WALL (PLASTER)**  
1. GYPSUM BOARD SHALL BE 5/8" THICK, 4' X 8' SHEETS OF 1/2"  
2. GYPSUM BOARD SHALL BE 5/8" THICK, 4' X 8' SHEETS OF 1/2"  
3. GYPSUM BOARD SHALL BE 5/8" THICK, 4' X 8' SHEETS OF 1/2"  
4. GYPSUM BOARD SHALL BE 5/8" THICK, 4' X 8' SHEETS OF 1/2"  
5. GYPSUM BOARD SHALL BE 5/8" THICK, 4' X 8' SHEETS OF 1/2"  
6. GYPSUM BOARD SHALL BE 5/8" THICK, 4' X 8' SHEETS OF 1/2"  
7. GYPSUM BOARD SHALL BE 5/8" THICK, 4' X 8' SHEETS OF 1/2"  
8. GYPSUM BOARD SHALL BE 5/8" THICK, 4' X 8' SHEETS OF 1/2"  
9. GYPSUM BOARD SHALL BE 5/8" THICK, 4' X 8' SHEETS OF 1/2"  
10. GYPSUM BOARD SHALL BE 5/8" THICK, 4' X 8' SHEETS OF 1/2"

**ONE HOUR EXTERIOR WALL (BRICK)**  
1. 4" X 8" X 16" FACE BRICK WITH CORNER MOVER  
2. OVER 5/8" GYPSUM BOARD WITH CORNER MOVER  
3. OVER 5/8" GYPSUM BOARD WITH CORNER MOVER  
4. OVER 5/8" GYPSUM BOARD WITH CORNER MOVER  
5. OVER 5/8" GYPSUM BOARD WITH CORNER MOVER  
6. OVER 5/8" GYPSUM BOARD WITH CORNER MOVER  
7. OVER 5/8" GYPSUM BOARD WITH CORNER MOVER  
8. OVER 5/8" GYPSUM BOARD WITH CORNER MOVER  
9. OVER 5/8" GYPSUM BOARD WITH CORNER MOVER  
10. OVER 5/8" GYPSUM BOARD WITH CORNER MOVER

**STRUCTURAL FRAMING ELEMENTS**  
1. MULTIPLE LAYERS OF GYPSUM BOARD AND AD-  
2. HEAVILY SECURED TO COLUMN FLANGES AND SUC-  
3. CESSIVE LAYERS OF GYPSUM BOARD AND AD-  
4. HEAVILY SECURED TO COLUMN FLANGES AND SUC-  
5. CESSIVE LAYERS OF GYPSUM BOARD AND AD-  
6. HEAVILY SECURED TO COLUMN FLANGES AND SUC-  
7. CESSIVE LAYERS OF GYPSUM BOARD AND AD-  
8. HEAVILY SECURED TO COLUMN FLANGES AND SUC-  
9. CESSIVE LAYERS OF GYPSUM BOARD AND AD-  
10. HEAVILY SECURED TO COLUMN FLANGES AND SUC-

**ONE HOUR CEILING ASSEMBLY**  
1. GYPSUM BOARD SHALL BE 5/8" THICK, 4' X 8' SHEETS OF 1/2"  
2. GYPSUM BOARD SHALL BE 5/8" THICK, 4' X 8' SHEETS OF 1/2"  
3. GYPSUM BOARD SHALL BE 5/8" THICK, 4' X 8' SHEETS OF 1/2"  
4. GYPSUM BOARD SHALL BE 5/8" THICK, 4' X 8' SHEETS OF 1/2"  
5. GYPSUM BOARD SHALL BE 5/8" THICK, 4' X 8' SHEETS OF 1/2"  
6. GYPSUM BOARD SHALL BE 5/8" THICK, 4' X 8' SHEETS OF 1/2"  
7. GYPSUM BOARD SHALL BE 5/8" THICK, 4' X 8' SHEETS OF 1/2"  
8. GYPSUM BOARD SHALL BE 5/8" THICK, 4' X 8' SHEETS OF 1/2"  
9. GYPSUM BOARD SHALL BE 5/8" THICK, 4' X 8' SHEETS OF 1/2"  
10. GYPSUM BOARD SHALL BE 5/8" THICK, 4' X 8' SHEETS OF 1/2"

**FIRE STOP ASSEMBLY**  
1. ALL PENETRATIONS OF FIRE RESISTIVE MEMBRANES  
2. SHALL BE SEALED WITH FIRE RESISTIVE SEALANT  
3. CAULK TO PROVIDE A ONE HOUR FIRE RATED AS-  
4. SEMBLY.  
5. **00600 REBILIT FLOORING**  
6. 1/2" X 1/2" THICK MATERIAL, VINYL  
7. COMPOSITION, 1/2" WHITE LATEX FILLER AND ADHESIVE  
8. NO ADHESIVE ON BACK OF CONCRETE SLAB ON  
9. GRADE WITH SPECIFIED FILLER. ALSO SPECIFIED FILLER  
10. FLOOR PREPARATION: 4" X 1/2" THICK TOP SET VINYL  
11. COVE BASE. VINYL TRANSITION STRIPS AS REQUIRED.

**APPROVED**  
Department of Codes Administration  
City of Kansas City, Missouri  
J. Barry Anderson, Director  
3-21-46  
By: [Signature]

**HOPE FELLOWSHIP CHURCH**  
KANSAS CITY, MISSOURI  
Dennis J. Lyon, Architects

**INTERIOR ELEVATIONS**  
SCALE: AS NOTED

**HOPE FELLOWSHIP CHURCH**  
KANSAS CITY, MISSOURI  
Dennis J. Lyon, Architects

**HOPE FELLOWSHIP CHURCH**  
KANSAS CITY, MISSOURI  
Dennis J. Lyon, Architects

**HOPE FELLOWSHIP CHURCH**  
KANSAS CITY, MISSOURI  
Dennis J. Lyon, Architects

**HOPE FELLOWSHIP CHURCH**  
KANSAS CITY, MISSOURI  
Dennis J. Lyon, Architects

**HOPE FELLOWSHIP CHURCH**  
KANSAS CITY, MISSOURI  
Dennis J. Lyon, Architects



# Church Membership and Righteousness

- Justification leads to transformation.
- Declared righteous = called to live righteously.
- Ongoing refusal to commit raises serious questions

# Hebrews 10:23-27

KANSAS CITY, MISSOURI

Dennis J. Lyon, Architects

J. Barry Archer, P.E., C80, Director  
Date: 3-21-96  
By: [Signature]

76



**“If you call yourself a Chrisitan but you are not a member of the church you attend, I worry you might be going to hell.” Pg. 25**

Dennis J. Lyon, Architects







# You need the Church

# And the Church Needs You

- Growth happens in proximity.
- Sanctification is relational.
- Christianity is lived, not merely believed

# God grows His people through His People.

## SPECIFICATIONS

08610 WOOD WINDOWS  
SEE SCHEDULE ON DRAWINGS.

08710 FINISH HARDWARE  
SEE SCHEDULE AND SPECIFICATIONS ON DRAWINGS.

08800 GLAZING  
1A' CLEAR LITE GLASS WHERE NOTED  
1A' CLEAR, ANNIQUED, TINTED GLASS WITH 1" OF FLOOR  
1A' CLEAR PLATE GLASS OTHERWISE  
1A' CLEAR NSU-ATED WINDOW GLASS

**05260 GYPSUM BOARD SYSTEMS**  
 5" OR 1/2" WOOD STUD FRAMING, WOOD BLOCKING  
 & SLOTTED BRACING AS REQ'D, 5/8" BIREGUL GYPSUM  
 BOARD USG #233 #23, 500 A TRIM CONTROL JOINTS A  
 AND LOCATED OR RECOMMENDED TAPED Banded, 4 MIL  
 POLYURETHANE VAPOR BARRIERS AT CEILING, QUALITY  
 CONTROL - USG GYPSUM CONSTRUCTION HANDBOOK

ONE HOUR INTERIOR WALLS  
ONE LAYER 5/8" TYPE "X" GYPSUM WALLBOARD JOINTS  
FLIED PARALLEL WITH OR AT RIGHT ANGLES TO EACH  
SIDE OF 2x4/6" WOOD STUDS SPACED 16" O.C. WITH 60  
COATED NAILS 1 7/8" LONG @ 90° SHANK 1/4" HEADS  
1" O.C. WALLBOARD Nailed TO TOP AND BOTTOM  
PLATES AT 1" O.C. STAGGER JOINTS 36" O.C. EACH  
SIDE (LOAD BEARING) U.B.C. 16-3 (5) 1) A)

ONE HOUR EXTERIOR WALL (PLASTER)  
2X6 WOOD STUDS 16" O.C. WITH 5/8" 6" PLY SHEATHING  
AND 1/4" EXTERIOR CEMENT PLASTER 7/8" TOTAL  
(MEASURED FROM THE FACE OF STUDS) ON THE EXTERIOR  
OR SURFACE WITH INTERIOR SURFACE TREATMENT AS  
REQUIRED FOR INTERIOR WOOD STUD PARTITION.  
PLASTER MIX 1:4 FOR SCRATCH COAT AND 1:3 FOR  
BROWN COAT. BY VOLUME. CEMENT TO SAND.  
EST. 11-13 (9M) 5

ONE FOUR EXTERIOR WALL (BRICK)  
7'4" X 3'4" CLAY FACE BRICK WITH CORED HOLES  
WITH 6" GYPSUM SHEATHING ON EXTERIOR SURFACE  
OF BRICK AND 5/8" GALV. STEEL LATHES ON INTERIOR  
SURFACE. THE GYPSUM BOARD ON EXTERIOR SURFACE  
SHEATHING PLACED HORIZONTALLY OR VERTICALLY  
WITH JOINTS ALIGNED VERTICALLY. THE LATHES  
PLACED HORIZONTALLY WITH JOINTS ALIGNED  
HORIZONTALLY. THE LATHES WERE GALVANIZED  
13K41 BY NO. 1 GAUGE BY 7/8" HEAD GALVANIZED  
WALL BOARD PLACED HORIZONTALLY OR VERTICALLY  
WITH JOINTS ALIGNED VERTICALLY. ALL VERTICAL  
JOINTS OVER STUDS. JOINTS TAPED AND  
FINISHED WITH COMPOUND. NAILS HEADS COVERED WITH  
COMPOUND. APPROX. 1/2" GALV. STEEL LATHES  
GALVANIZED STEEL LATHES 1/8" B34 BY 5/8" ATTACHED TO  
EACH STUD WITH TWO BRD COOLERS OR WALLBOARD  
NAILS. APPROX. 1/2" COURSE OF BRICKS.  
EACH 11-5 (PM) 11

**STRUCTURAL FRAMING ELEMENTS**  
MULTIPLE LAYERS OF 1/2 GYPSUM WALLBOARD AD-  
HESIVELY SECURED TO COLUMN FLANGES AND SUC-  
CESSIVE LAYERS WALLBOARD APPLIED WITHOUT  
HORIZONTAL JOINTS. CORNER EDGES OF EACH LAYER  
STAGGERED. L.A. BOARD LAYER BELOW OUTER  
LAYER SECURED TO COLUMN WITH DOUBLED NO. 8  
GAUGE WIRE TIES SPACED 15" O.C. EXPOSED CORNER  
TAPED AND TREATED. 1 COVER PROVIDES ONE HOUR  
PROTECTION. UBC 1711.5

**ONE HOUR CEILING ASSEMBLY**  
CEILING: TWO LAYERS OF 5/8" TYPE X GYPSUM WALL BOARD APPLIED PERPENDICULAR TO TRUSSES. BASE LAYER END JOINTS STAGGERED 24" AND ALL FACE LAYER JOINTS OFFSET 24" FROM THE JOINTS OF THE BASE LAYER. BASE LAYER ATTACHED TO BOTTOM CHORD WITH 1 1/4" TYPE 8 DRYWALL SCREWS 24" o.c. FACE LAYER ATTACHED WITH 1 1/2" TYPE 8 DRYWALL

SCREWS 2" oc. IN ADDITION, 10" TYPE 3 DRYWALL SCREWS SPACED 24" oc. ARE PLACED 3" BACK FROM EACH SIDE OF FACE LAYER END JOINT.

TRUSSES, CHORD AND LED MEMBERS ARE FABRICATED FROM 2 x 4 LUMBER WITH 22 GAUGE STEEL CONNECTION PLATES THAT HAVE A MINIMUM TOOTH LENGTH OF 8 1/8". PLATE DESIGN VALUES SHALL BE BASED UPON A SAFETY FACTOR OF 4. TRUSSES ARE SPACED A MAXIMUM OF 24" oc. AND HAVE A MINIMUM DEPTH OF 2". USC 2-11

**FIRE STOP ASSEMBLY**  
ALL PENETRATIONS OF FIRE RESISTIVE MEMBRANES SHALL BE SEALED WITH 3M INTERAM FIRE DAM GLO GULK TO PROVIDE A ONE HOUR FIRE RATED ASSEMBLY.

**09600 RESILIENT FLOORING**  
2' x 2' x 1/8" THICK MARBLIZED PATTERN VINYL  
COMPOSITION TILE WHITE LATEX FILLER AND ADHESIVE  
(NO ASPHALTIC CUT BACK) ON CONCRETE SLAB ON  
GRADE WITH SPECIFIED PRICE ALLOWANCE INCLUDING  
FLOOR PREPARATION. 4' x 1/8" THICK TOR SET VINYL  
CORE BASE VINYL TRANSITION STRIPS AS REQUIRED.



**Jim Brown**  
Construction

FOUNDAIR, INC. BOX 995-4544

## INTERPRETATIONS

## NOTATION ELEVATIONS

OF THE

HOPE FELLOWSHIP

CHURCH

KANSAS CITY, MISSOURI

Dennis J. Lyon Architects



# Fruit Requires Community

# The fruit of the spirit require OTHER PEOPLE.

- 
- Love
  - Joy
  - Peace
  - Patience
  - Kindness

- Goodness
- Faithfulness
- Gentleness
- Self-control

## SPECIFICATIONS

08610 WOOD WINDOWS  
SEE SCHEDULE ON DRAWING 6.

25710 FINISH HARDWARE

08800 GLAZING

1/4" CLEAR WIRE GLASS WHERE NOTED  
1/4" CLEAR LAMINATED SAFETY GLASS WIN 18" OF FLOOR  
1/4" CLEAR PLATE GLASS OTHERWISE  
1/2" CLEAR INSULATED WINDOW GLASS.

09260 GYPSUM BOARD SYSTEMS

3/4" OR 5/8" WOOD STUD FILING, WOOD BLOCKING AS REQ'D. BRACING AS REQ'D. 5/8" RECODE GYPSUM BOARD. USG 1203, 1203, 500 A TRIM. CONTROL JOINTS AS INDICATED OR RECOMMENDED. TAPED/SANDED. 4 MIL POLYURETHANE VAPOR BARRIER AT CEILING. QUALITY CONTROL - USG GYPSUM CONSTRUCTION HANDBOOK.

### ONE HOUR INTERIOR WALLS

ONE LAYER 1/2" TYPE "X" GYPSUM WALLBOARD APPLIED PARALLEL WITH OR AT RIGHT ANGLES TO EACH SIDE OF 1x4x6" WOOD STUDS SPACED 16" O.C. WITH 6D COATED NAILS 1 7/8" LONG. CORNER SHANK 1/4" HEADS. 1" O.C. WALLBOARD NAILED TO TOP AND BOTTOM FLATES AT 7" O.C. STAGGER JOINTS 16" O.C. EACH SIDE (LOAD BEARING) U.B.C. 6-3 (16) 5.

ONE HOUR EXTERIOR WALL (PLASTER)  
2x6 WOOD STUDS @ 16" OC WITH 5/8" GYPSUM SHEETING

AND 1/4" EXTERIOR CEMENT PLASTER 7/8" TOTAL  
MEASURED FROM THE FACE OF STUDION ON THE EXTERIOR  
OR SURFACE WITH INTERIOR SURFACE TREATMENT AS  
REQUIRED FOR INTERIOR WOOD STUD PARTITION.  
PLASTER MIX 1:4 FOR SCRATCH COAT AND 1:3 FOR  
BROWN COAT BY VOLUME CEMENT TO SAND.  
JBC 13 8M 5

ONE HOUR EXTERIOR WALL (BRICK)

7/4" X 5/8" TYPE A FLAME BRICK WITH COORED LOOSE  
 1/4" X 5/8" GYPSUM SHEATHING ON EXTERIOR SURFACE  
 OF 3/4" X 5/8" TYPE A FLAME BRICK WITH COORED LOOSE  
 1/4" X 5/8" GYPSUM WALL BOARD ON INTERIOR SURFACE  
 SHEATHING PLACED HORIZONTALLY OR VERTICALLY  
 WITH VERTICAL JOINTS OVER STUDS NAILLED 6" OC WITH  
 1/4" X 5/8" TYPE A FLAME BRICK WITH COORED LOOSE  
 NAILS WALL BOARD PLACED HORIZONTALLY OR VERTI-  
 CALLY AND NAILLED 6" OC WITH 60 WALL BOARD NAILS  
 ALL JOINTS COMPOUNDED, NAIL HEADS COVERED WITH  
 FINISHED WITH COMPOUND, NAIL HEADS COVERED WITH  
 JOINT COMPOUND, NO. 10 GAGE CORRUGATED GAL-  
 VANIZED STEEL NAIL "E" 3/4" BY 5/8" ATTACHED TO  
 EACH STUD WITH TWO BRICKS, 7/4" X 5/8" WALL BOARD  
 NAILS EVERY EIGHT COURSE OF BRICKS.  
 UBC 17-5 (SM) (P)

## STRUCTURAL FRAMING ELEMENTS

MULTIPLE LAYERS OF 1/2 GYPSUM WALLBOARD ADHESIVELY SECURED TO COLUMN FLANGES AND SUCCESSIVE LAYERS. WALLBOARD APPLIED WITHOUT HORIZONTAL JOINTS. CORNER EDGES OF EACH LAYER STAGGERED. WALLBOARD LAYER BELOW OUTER LAYER SECURED TO COLUMN WITH DOUBLED NO. 8 GAUGE WIRE TIES SPACED 3' O.C. EXPOSED CORNERS TAPED AND TREATED. 1 COVER PROVIDES ONE HOUR PROTECTION. UBC 1-71.5.

### ONE HOUR CEILING ASSEMBLY

CEILING, TWO LAYERS OF 5/8" TYPE X GYPSUM BOARD SHALL BE APPLIED PERPENDICULAR TO THUSSES. BASE LAYER SHALL BE 5/8" TYPE X GYPSUM BOARD. SECOND LAYER LAYERS ORIENT 24" FROM THE JOINTS OF THE BASE LAYER. CHORD LAYER ATTACHED TO BOTTOM CHORDS WITH 1/4" DIA. GALV. STEEL PLATE. 25% OF FACE LAYER ATTACHED WITH 1/8" TYPE X DRYWALL CORUSERS 2' ON. IN ADDITION 10% THRU CHORD WALL CORUSERS 2' ON. ARE TO BE USED. BACK FROM EACH SIDE OF FACE LAYER DED. JOINT.

THUSSES, CHORD AND WEB MEMBER ARE FABRICATED WITH 2 X 4 LUMBER WITH 2X6 GUSSET STEEL CONNECTIONS. THUSSES SHALL BE 24" ON CENTER. 5/8" PLATE GUSSET VALUES SHALL BE BASED UPON A 10% FACTOR. ALL THUSSES ARE SPACED 24" ON C. 2 X 4'S AND HAVE A MINIMUM DEPTH OF 2" USC 2 X 4'S.

FIRE STOP ASSEMBLY

ALL PENETRATIONS OF FIRE RESISTIVE MEMBRANES SHALL BE SEALED WITH 3M INTERAM FIRE DAM 80 CAULK TO PROVIDE A ONE HOUR FIRE RATED ASSEMBLY.

03650 SEALANT FLOORING

**250000 RESILIENT FLOORING**  
2' x 2' x 1/8" THICK PARQUETIZED PATTERN VINYL  
COMPOSITION TILE, WHITE LATEX FILLER AND ADHESIVE  
(NO ASPHALTIC CUT BACK) ON CONCRETE SLAB ON  
GRADE WITH AN SPECIFIED PRICE ALLOWANCE INCLUDING  
FLOOR PREPARATION. 4' x 1/8" THICK TOR SET VINYL  
COVE BASE. VINYL TRANSITION STRIPS AS REQUIRED.

The logo for Jim Brown Construction, featuring the name "Jim Brown" in a large, stylized script font, with "Construction" in a smaller, simpler font below it, all enclosed within an oval border.

FOURTH NEBRASKA 303 995-4944

### INTERIOR ELEVATIONS

1	2	3	4	5	6	7	8	9	10	11	12	13	14	15	16	17	18	19	20	21	22	23	24	25	26	27	28	29	30	31	32	33	34	35	36	37	38	39	40	41	42	43	44	45	46	47	48	49	50	51	52	53	54	55	56	57	58	59	60	61	62	63	64	65	66	67	68	69	70	71	72	73	74	75	76	77	78	79	80	81	82	83	84	85	86	87	88	89	90	91	92	93	94	95	96	97	98	99	100
---	---	---	---	---	---	---	---	---	----	----	----	----	----	----	----	----	----	----	----	----	----	----	----	----	----	----	----	----	----	----	----	----	----	----	----	----	----	----	----	----	----	----	----	----	----	----	----	----	----	----	----	----	----	----	----	----	----	----	----	----	----	----	----	----	----	----	----	----	----	----	----	----	----	----	----	----	----	----	----	----	----	----	----	----	----	----	----	----	----	----	----	----	----	----	----	----	----	----	-----

SCALE: 46 NOTED

HOPE FELLOWSHIP

CHURCH

KANSAS CITY, MISSOURI

Dennis J. Lyon, Architects



*A healthy church requires every member to care.*

## Dennis J. Lyon, Architects



# Bringing it Together

## *The Gospel Creates*

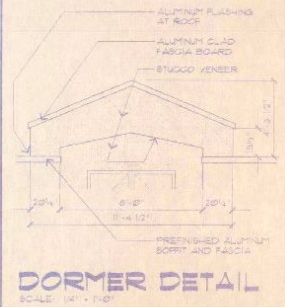
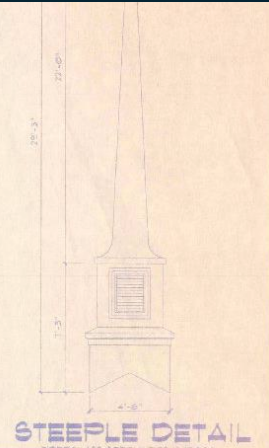
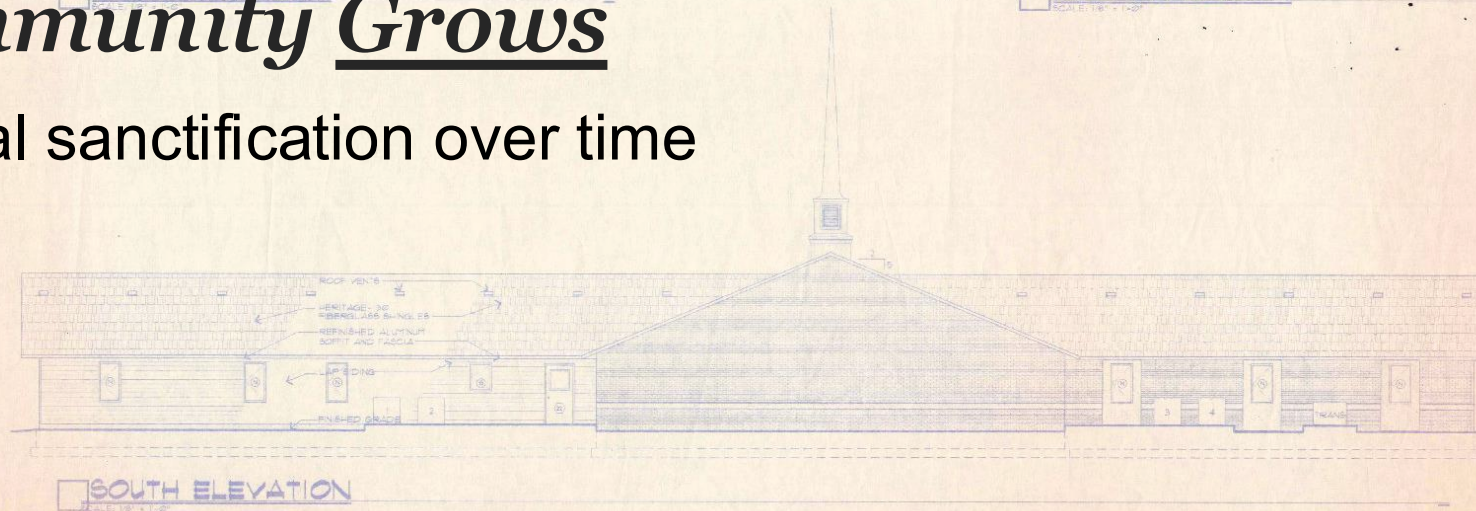
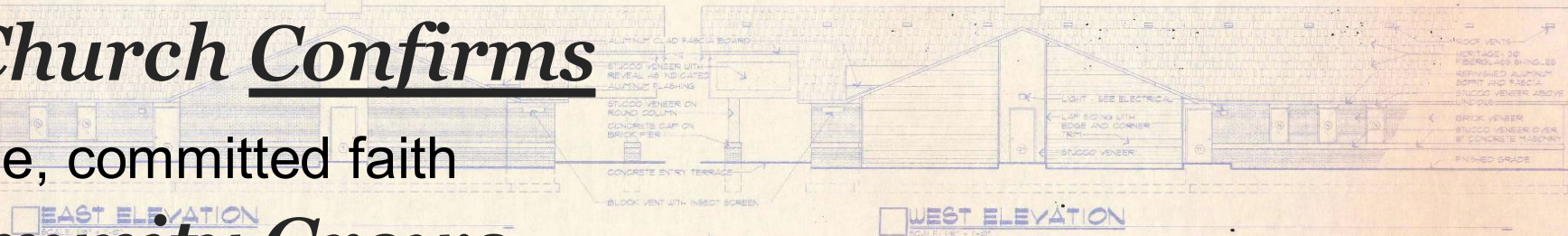
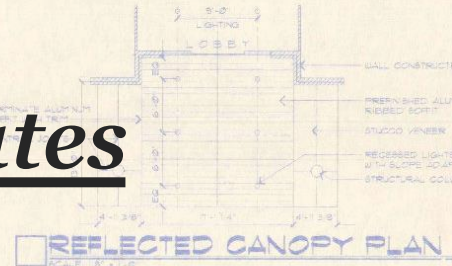
- New Life in Christ

## *The Church Confirms*

- Visible, committed faith

## *Community Grows*

- Real sanctification over time



HOLDREGE, NEBRASKA 302 / 855-4544

EXTERIOR ELEVATIONS

SCALE: 1/8" = 1'-0"

HOPE FELLOWSHIP  
CHURCH  
KANSAS CITY, MISSOURI

Dennis J. Lyon, Architects  
ARCHITECTS • FULL SERVICE ARCHITECTURE  
TELEPHONE (816) 482-1880 FAX (816) 482-1700  
LINCOLN TRAIL CENTER 4800 SOUTH WENTWORTH AVENUE, SUITE 100  
LINCOLN, NEBRASKA 68504



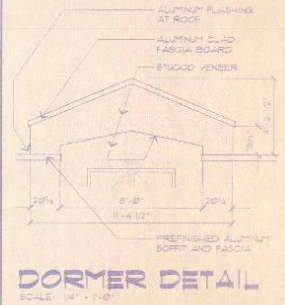
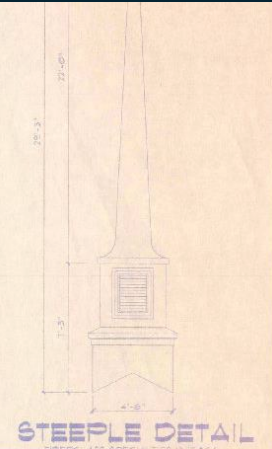
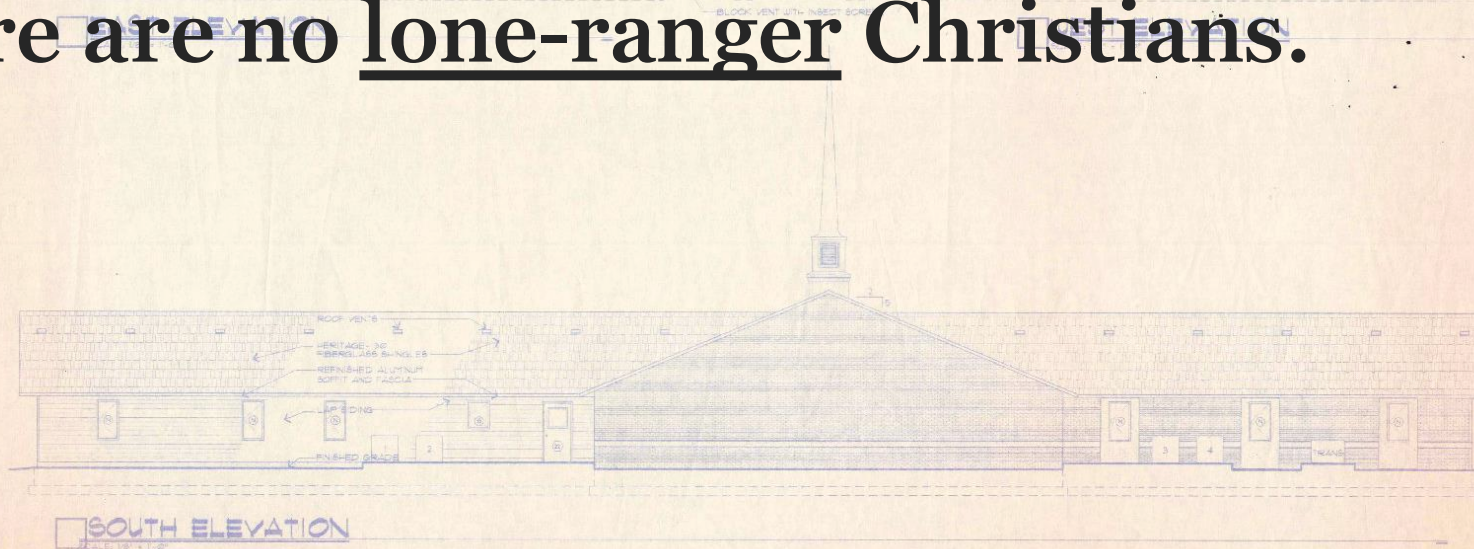
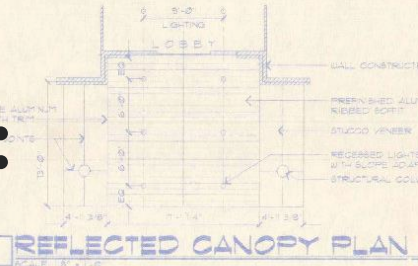
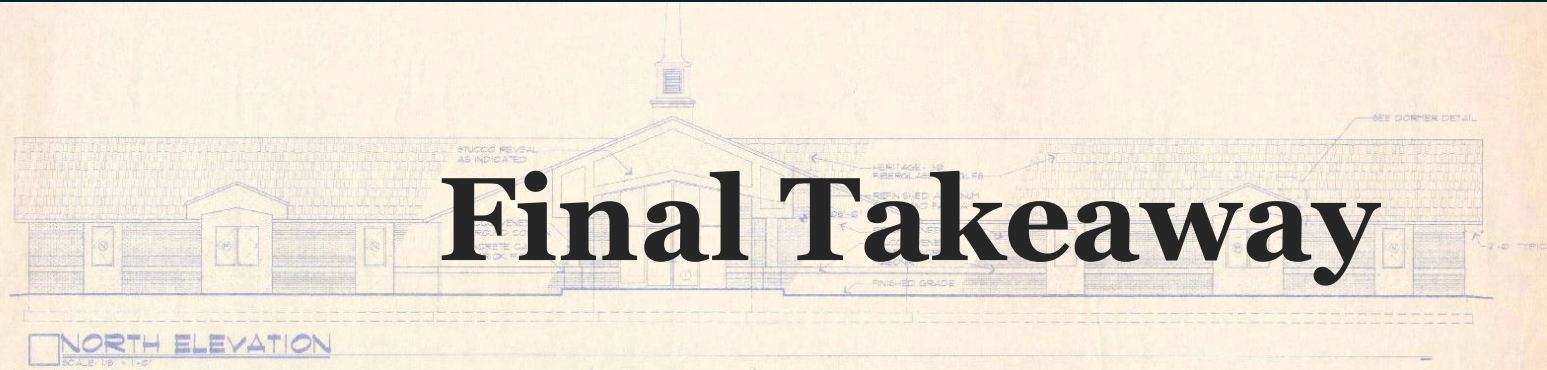


# Final Takeaway

Christian faith is:

- Created by the gospel.
- Confirmed in the church.
- Grown through committed community.

There are no lone-ranger Christians.



HOLDREGE, NEBRASKA 302 / 855-4544

EXTERIOR ELEVATIONS

SCALE: 1/8" = 1'-0"

HOPE FELLOWSHIP  
CHURCH  
KANSAS CITY, MISSOURI

Dennis J. Lyon, Architects  
ARCHITECTS • PLANNERS • INTERIORS  
TELEPHONE (816) 482-1880 FAX (816) 482-1700  
LINCOLN TRAIL CENTER  
LINCOLN, NEBRASKA 68504

DATE: 06 MAY 96  
PROJECT NO. 35116



A-03

APPROVED  
Department of Codes Administration  
City of Kansas City, Missouri  
J. Barry Archer, P.E., CDO, Director  
Date: 3-21-96  
By: [Signature]  
(for the Director)