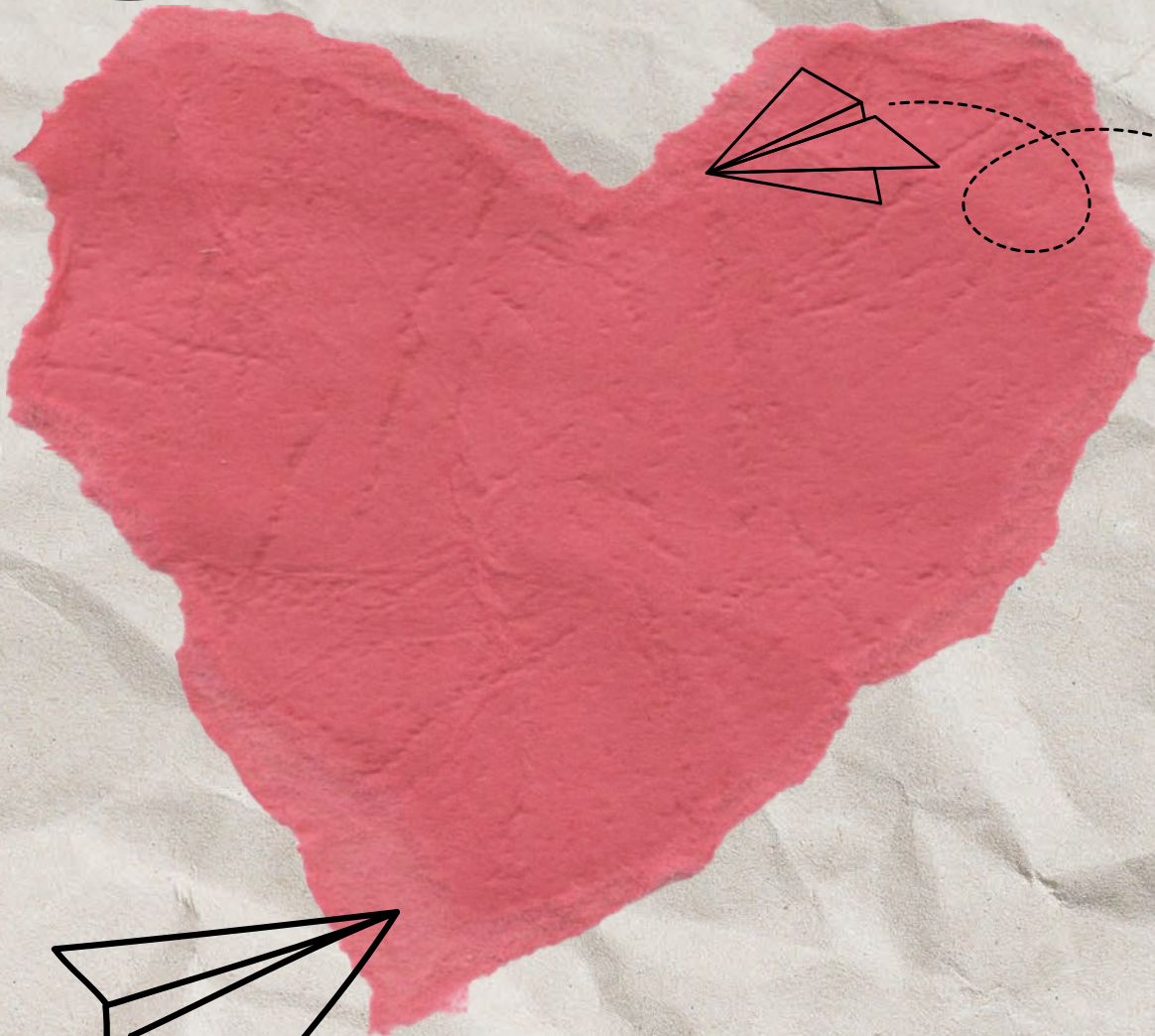




***Love Letter to  
the Church***



**EPHESUS**

**REVELATION 2: 1-7**

## **Before the bible study,**

- READ Revelation 2: 1-7
- Please watch/listen to last Sunday's message (Love Letters to the Church-Week 1). You can watch it on Youtube or at [www.fgcag.com/media](http://www.fgcag.com/media).



**What's one thing about this week's message that stood out to you as something you needed to hear OR a question you had about the message?**

**QUESTION**

---

## **MAIN POINTS FROM LAST WEEK'S SERMON**

We see this love letter split into two parts when it comes to the church.

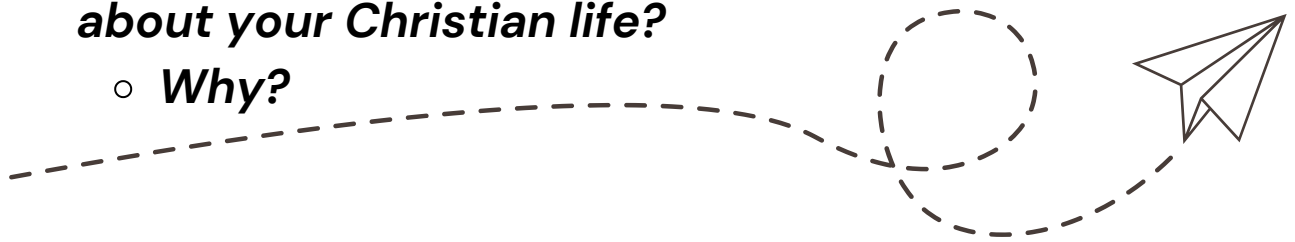
- *PRAISE FOR THEIR WORK & PATIENCE*
- *LOVING CORRECTION*

This leads to the question ...

- *HOW DO WE GET THAT FIRST LOVE BACK?*

# DISCUSSION QUESTIONS:

- Have you started out on fire for Jesus, completely repented, changed by grace – then over the years of life getting to you – you lose sight of how you started? *Share your experience*
- *How can the Christian life become more mundane than exciting?*
  - *How can church become more of a chore than a place of worship?*
- *Discuss all the positives Jesus had to say about the church.*
- *Would Jesus be able to say the same thing about your Christian life?*
  - *Why?*

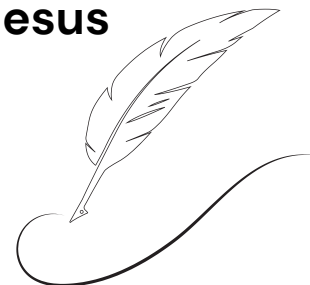


- *What is meant by “you have left your first love”?*
  - *What is the consequence if we fail to repent?*
- *Discuss the ways the church at Ephesus has fallen short. Read Acts 19:17-20.*
  - *What did the church do at the beginning that Jesus was turning them back to?*
- *How should we restore and maintain our first love?*
- *What does eating from the tree of life represent (Rev. 22:2,14)?*

# LIVING IT OUT SECTION

*ANSWER THESE QUESTIONS & RIGHT THEM DOWN*

- If Jesus were to write you a letter telling you to turn back to the way you started, what would be in that letter?
- This week write a letter that you believe Jesus would send to you.
  - Share it with the group next week



---

---

---

---

---

---

---

---

---

---

---