

PLAYBILL®

Highland Park United Methodist Church
Wesley Hall | Dallas, TX
February 24 & 25, 2024



BELONG
DISABILITY MINISTRY

MISSION:

MIRROR-MIRROR



A SPOTLIGHT MUSICAL THEATER PRODUCTION

Highland Park United Methodist Church
Belong Disability Ministry
Spotlight Musical Theater

PRESENTS FOR ITS 14TH SEASON

MISSION: MIRROR MIRROR

Music by George Gagliardi
Book by Actors and Artistic Team

Director of Belong Disability Ministry
Stephanie Newland

Director
Lisa Schmidt

Producers
Cailey Brandon
Highland Park United Methodist Church

Associate Directors
Connie Parry
Tim Johnson

Music Director
Jordan Tenpas

Choreographer
Christie Bondade

Accompanist
Maria Marwill-Magee

Set Designers
Bob Newland
Colton Brandon

Prop Designers
Artistic Team

Costume Designers
Sarah Eubank
Katherine Schafer



BELONG
DISABILITY MINISTRY

IN LOVING MEMORY OF



For Spotlight Musical Theater's 14th season, we celebrate the legacy of Sue Ringle. After seeing her nephew perform in a theater program for older teens and adults with disabilities in Fort Wayne, Indiana, Sue was inspired to start a similar program at Highland Park United Methodist Church. Sue's vision has since grown into a thriving performing arts program. We give thanks for Sue's conviction, tenacity, and persistence in creating a space for all to be empowered and to live more fully into our God-given gifts.

IN LOVING MEMORY OF

JUSTIN FRANKLIN WATERS

July 26, 1982 - September 23, 2023



PATRICIA ELLEN GIBSON

June 24, 1947 - July 23, 2023



DIRECTOR'S NOTE

Spotlight Musical Theater is dedicated to listening to the voices of the unheard. We celebrate the ideas and talents of our cast in ways they have perhaps not easily found elsewhere in their lives, at least outside their families and closest friends.

Each production's rehearsals begin in September when the cast discusses topics and themes that engage their hearts and minds. We brainstorm ideas, characters, and plots for the upcoming play. The brainstorming is always surprising and inspiring and is done both verbally and non-verbally. The cast consists of 27 individuals with perspectives that differ from those of the artistic staff. The production crew—professional directors, composers and choreographers—put our ideas on the back shelf and foreground what we hear from the cast in the first few weeks to create the script, songs, and dances.

So, what happened in Spotlight world this year? In September 2023, Jimmy Buffett passed away. Texas was coming out of the second hottest summer on record and climate change was in all the news. The social media platform X (formerly Twitter) was filled with news about a new SpaceX launch. Several cast members who are adopted wanted to promote the concept of adoption. Many cast members shared their love of classic films such as "The Wizard of Oz," "Snow White," and "Star Wars." Others are huge fans of the "Harry Potter," "Toy Story," and "Aladdin" series. One player simply wanted to portray the President of the United States.

Welcome, dear audience and supporters, to the Oval Office where President Heartly is faced with the toughest decision of his career. He and his cabinet are in the midst of a global crisis. They are inspired by the imagination of children of the White House who are able to embrace and harmonize what most of us see as conflicting worlds. We are all reminded to look deeply in the mirror.

—Lisa Schmidt, Director of "Mission: Mirror Mirror"

SONGS & SCENE ORDER

Act One

Tap Dancing Around	Agent Walls and Presidential Officials
Go-to Guy	Agent Steele, Director Fife, and Agents
Darth Vader	Darth Vader

Act Two

Motherhood	Mrs. Ellen Ryan, Mrs. Heartly
Go-to Guy (Reprise)	Agent Steele
Loving Eyes	Snow White
Mirror, Mirror	Dr. Husk, Darth Vader, Agent Fife, Jimmy Buffett, and Cast

Scene Order

1. Discovering Maxie and Jimmy Buffett
 2. Tap Dancing Around
 3. Alan Babysits Maxie
 4. Action Figures
 5. Maxie Screams and Agents Run In
 6. FBI/Go-to Guy
 7. Star Wars Figures Added/Tug of War
 8. Darth Vader
 9. Awakening and Battle
- INTERMISSION
10. Ryan and FLOTUS Care For Children
 11. Motherhood
 12. Intelligence Reports About the Satellite
 13. Dr. Melon Husk's Office
 14. On High Alert
 15. Ryan and Maxie
 16. True Love's Hug/Loving Eyes
 17. Self-Destruct Button and Jimmy's Return
 18. Mirror Mirror/Finale

CAST

Cast Members

President Heartly	Davis Hecksel
Mrs. Nancy Heartly, First Lady	Nancy Appelman
Mrs. Ellen Ryan, FLOTUS Assistant	Hannah Rynerson
Maxie Ryan	Sally Smith
Alan Heartly	Alex Winandy
Jimmy Buffet	Austin Aldred
Secretary of Interiors, Walls	Andrea Parton
Secretary of Homeland Security, Holmes	John Moore
Director of FBI, Fife	Kathleen Gamso
Agent Derek Steele	Jason Carter
Agent Angie	Beth Coe
Agent 99	Erin Anderson
Agent Techie	James Allen Gulley
Woody Pride, Toy Story	Nicholas Ensminger
Jessie Yodel, Toy Story	Sarah Salaiz
Scarecrow, Wizard of Oz	Cormac Currin
Cowardly Lion, Wizard of Oz	Jake Eubank
Tin Man, Wizard of Oz	Scott Spittler
Rajah, Aladdin	Shannon Harrison
Snow White	Ashley Chaffin
Luke Skywalker/Kumquat	Luke Andrews
Princess Leia, Star Wars	Isabella Norman
Darth Vader, Star Wars	Scott Beard
Chewbacca, Star Wars	Quentin Parker
Harry Potter	Christian Munguia
Hermione Granger	Mary Claire Teeter
Ginny Weasley	Jessica Smith
Dr. Melon Husk	Michael Susens

CREW

Crew Members

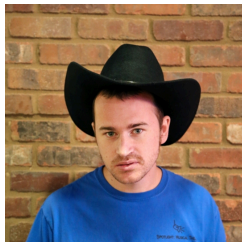
Director of Belong Disability Ministry	Stephanie Newland
Director	Lisa Schmidt
Producer, Spotlight Coordinator	Cailey Brandon
Associate Director	Tim Johnson
Associate Director	Connie Parry
Composer/Guitarist	George Gagliardi
Music Director	Jordan Tenpas
Accompanist	Maria Marwill-Magee
Choreographer	Christie Bondade
Set Designer	Bob Newland
Costume Designer	Sarah Eubank
Costume Designer	Katherine Schafer
Prop Designers	Artistic Team
Hair & Makeup	Amanda Tillman and Holly Jo Harris
Wesley Hall Executive Producer	Michael Gomez
Sound Engineer	Graham Sadler
Lighting Designer	James Clute
Camera Operator	Michael Sears
Program Cover Art	Kathleen Gamso Beth Coe Rob Wallover
Slide Operator	Dung Ngyuen
Volunteer	Doug Anderson
Volunteer	Jan Beard
Volunteer	Colton Brandon
Volunteer	E.J. Burke
Volunteer	Lily Fee
Volunteer	Ceci Gladbach
Volunteer	Shirley Harrison
Volunteer	Betsy Hecksel
Volunteer	Jack Honeyman

CREW

Crew Members (continued)

Volunteer	Sandy Jobe
Volunteer	Lauren Lawshe
Volunteer	Samuel Loh
Volunteer	Alex Magee
Volunteer	Michael Moore
Volunteer	Kyla Morris
Volunteer	Viki Norman
Volunteer	Leticia Parker
Volunteer	Ben Petroff
Volunteer	Shirley Spittler
Volunteer	Stan Spittler
Volunteer	Lindsay Warner
Guitar, Keyboard	George Gagliardi
Piano	Maria Marwill-Magee
Drums/Percussion	John Simon
Bass	Phil Minshew
Flute	LeAnn Hampton
Saxes	Mark McKenzie
Cello	Gretchen Nichols

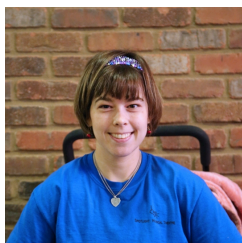
WHO'S WHO



Davis Hecksel

as President Heartyly

Born in North Carolina, Davis moved to Dallas to attend the Shelton School where he first learned to love theater. He graduated from Highland Park and went to work for the SMU football team. He now works at Chick-fil-A, is active in SOTX, and loves Belong at HPUMC—especially Spotlight Musical Theater. In his spare time, he enjoys the company of his girlfriend and pet cat.



Nancy Appelman

as Mrs. Nancy Heartyly, First Lady

Nancy is a long-time sweetheart of Spotlight Musical Theater. She loves Spotlight because of being able to rehearse with her friends and to perform on stage. When she's not singing or acting, Nancy loves to swim, horseback ride, and attend day classes here at Belong Disability Ministry. She has been in the Special Olympics for both swimming and horseback riding. She believes that she can overcome any challenges life hands her. We believe that too, Nancy!



Hannah Ryneron

as Mrs. Ellen Ryan, FLOTUS Assistant

Hannah loves participating in Spotlight Musical Theater as well as NTPA's productions and its Starcatchers program! Hannah has performed in plays like "Willy Wonka," "The Sound of Music," and "All Shook Up." She is also the face of Howdy Homemade Birthday Cake ice cream at H.E.B. She would like to thank her mom and dad for continuing to support her dreams of acting.



Sally Smith

as Maxie Ryan

Long-time actress with Spotlight Musical Theater, Sally's favorite parts of the creative process are practicing her role, performing for an audience, and making friends with many of the staff. Aside from her musical theater talents, Sally also works at the YMCA and stars in HPUMC's original documentary "Into the Spotlight."



Alex Winandy

as Alan Heartyly

Alex was born in Dallas, TX. Although this is Alex's first Spotlight Musical Theater performance, he has performed with Dallas Children's Theater's Blue Pegasus players. He plays the guitar and loves action figures, which is a clue as to what you may see in the show!

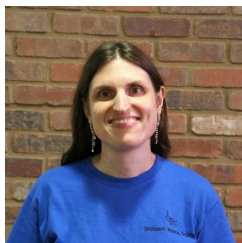
WHO'S WHO



Austin Aldred

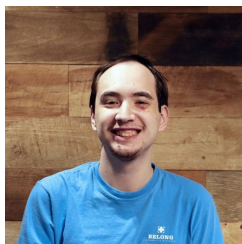
as Jimmy Buffet

Born and raised in Dallas, TX, this is Austin's second year to be in Spotlight Musical Theater. He loves to sing and play fun characters, and people may not know that Austin also plays the drums. This year, you'll find him playing a beloved famous figure who loves to sing and kick his feet up on the beach.



Andrea Parton *as Secretary of Interiors, Walls*

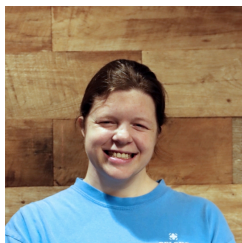
Born in Dallas, TX, Andrea is anything but a novice in show business. She has performed in many different musical theater casts, and participates in Dallas Comedy Club open mic nights. This is her fourth Spotlight musical and ninth Spotlight production. Other theater credits include "Blithe Spirit" (Mrs. Bradman), "Mamma Mia" (Donna Sheridan), "My Fair Lady" (Eliza Doolittle), and "Much Ado About Nothing" (George Seacoal). Andrea loves Spotlight because of the ability to devise her own music with other actors and the professional artistic staff. Catch her featured in HPUMC's original documentary "Into the Spotlight."



John Moore

as Secretary of Homeland Security, Holmes

Born in Alabama, John has is making his debut for the first time in this year's Spotlight musical. John's favorite thing about Spotlight is meeting new friends and being given an opportunity to sing and dance. At home, he likes to build with LEGOS. John has explored many talents this season and hopes you enjoy the show!



Kathleen Gamso

as Director of FBI, Fife

This is Kathleen's first year in Spotlight, but it's safe to say that she is a natural at performing. She loves playing a villainous character and contributes so many artistic ideas, as she helped develop our cover art this year. Kathleen works at Belong Disability Ministry for To Be Like Me to spread awareness about her diagnosis, William's Syndrome. She also is very proud to be the first person with William's Syndrome in Highland Park ISD. We're so happy to have you in our cast, Kathleen!

WHO'S WHO



Jason Carter

as Agent Derek Steele

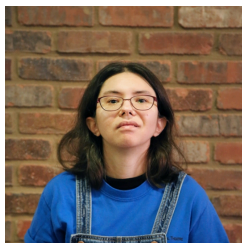
Born in San Diego, CA, Jason has starred in many of our Spotlight productions. He enjoys brainstorming and acting out new characters each year. Jason has just earned his driver's license and is usually characterized by his blue sequin "Johnny Domino" jacket from HPUMC's original documentary "Into the Spotlight."



Beth Coe

as Agent Angie

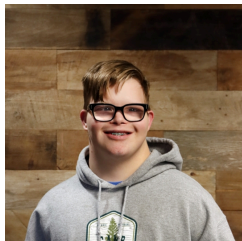
Born in Cookeville, TN, Beth enjoys improving her acting skills with each practice and performance. Beth attends Belong Disability Ministry day classes, and especially loves to engage in art. She has been an artist for many years and it is one of her favorite hobbies. She loves coming to Belong events and classes because they allow her to meet new friends and explore new activities.



Erin Anderson

as Agent 99

Born in DFW, Erin is a veteran of both Spotlight Musical Theater and Spotlight Short Film productions. She has a passion for movies and directors, and has an uncanny ability to tell you the year and director of any movie out there! She loves the development of our shows each year and enjoys helping other actors carry a scene to make it come to life.

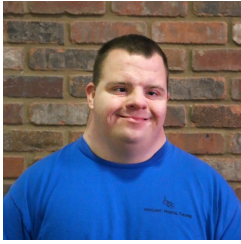


James Allen Gulley

as Agent Techie

James Allen Gulley has been a part of many Spotlight musicals. Born and raised in Dallas, James is graduating in May from high school and hopes to attend college next year! Many of his inspirations come from "The Flash" and Grant Gustin who plays Barry Allen in the show. During Spotlight rehearsals, James likes to hang out with the volunteers and observe the scenes as they come together.

WHO'S WHO



Nicholas Ensminger

as Woody Pride, Toy Story

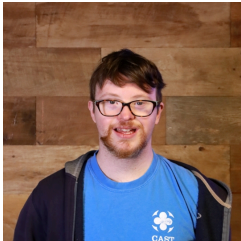
Nicholas is a continuing performer in Spotlight. His love for the theater could have originated from his love of the circus, clowns, and performing. His Special Olympics talents include cheerleading, swimming, tennis, bowling, gymnastics, and basketball. Nicholas is a Life Scout working towards Eagle and attends The Notre Dame School of Dallas in the Star Program. Along with juggling at children's events and holiday markets, Nicholas thrills a crowd with his custom lookalike hand puppet named Dill!



Sarah Salaiz

as Jessie Yodel, Toy Story

This is Sarah's second time to be a part of Spotlight Musical Theater! She attends Highland Park High School's Transition Program and she is a member of the Chance's Cafe crew. Sarah is sure to make you smile in her familiar and comedic role this season.



Cormac Currin

as Scarecrow, Wizard of Oz

Cormac was born in Dallas, TX. With nine shows under his belt, Cormac's favorite thing about Spotlight is being creative and playing different characters. His new hobby is beekeeping, and his adventurous spirit continues to thrill us! We're so happy to have you back again for another round of musical theater fun!



Jake Eubank

as Cowardly Lion, Wizard of Oz

Born in Dallas, TX, Jake has been a part of Spotlight for many years. He loves that it's an original show each year and enjoys rehearsing with friends each week. He enjoys all things Halloween and has been such a joy to have in our cast.



Scott Spitler

as Tin Man, Wizard of Oz

Scott has been a part of Spotlight since its very first show! He was born in Dallas but has lived in five different states and Belgium. He has participated in Special Olympics in every one of these locations. Scott was also a part of the fun of filming the documentary "Into The Spotlight." Lots of family, and friends (and even his doctor) have come to see it.

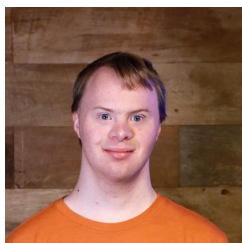
WHO'S WHO



Shannon Harrison

as Rajah, Aladdin

From the DFW area, Shannon enjoys being a part of the Spotlight group. She has been dancing and choreographing since the age of six. She also enjoys singing, acting, and creating costumes. Shannon works part-time at W. Walworth Harrison Public Library. She has made new friends this year and is playing a creative role inspired by her own ideas!



Luke Andrews

as Luke Skywalker/Kumquat

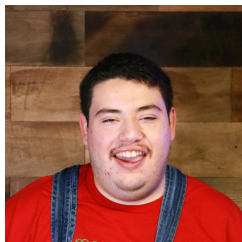
This will be Luke's third season with Spotlight. When he's not acting, he enjoys travel and has been making his own travel videos! Luke posts them on YouTube and Instagram to show the world his travel experiences. He loves everything about Belong Disability Ministry and loves working at Chance's Cafe.



Isabella Norman

as Princess Leia, Star Wars

This is Isabella's first Spotlight musical. Her favorite things about Spotlight are being able to play a character, to sing, and to act. Isabella has three sisters, and loves to socialize and meet new friends! Alongside her love of music and dancing, Isabella loves to laugh and craft with her friends she's met at Belong.



Quentin Parker

as Chewbacca, Star Wars

Quentin gifts the cast the warmest smile and enjoys the company of other passionate learners. He continues to win over the audience with each performane. Quentin's family has just recently welcomed their ninth grandchild on November 1, which makes Quentin an uncle 9x over, and he goes by Uncle KenKen.



Michael Susens

as Dr. Melon Husk

Born and raised in Dallas, TX, Michael has been with Spotlight Musical Theater for nine years. He currently works at SMU Umphrey Lee Hall in food service, Chance's Cafe, and To Be Like Me as a LEADer to provide disability awareness about autism. He loves playing video games, working on model trains, and is starting a YouTube career. He loves trying new restaurants with friends and family, and being a secret restaurant critic! He loves being in Spotlight because it allows everyone a chance to "shine."

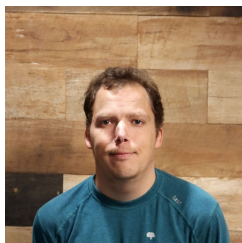
WHO'S WHO



Ashley Chaffin

as Snow White

Born in Dallas, Ashley attends My Possibilities, loves to dance, and enjoys playing with her three dogs. This is her first season of Spotlight Musical Theater, and she has enjoyed bringing her part to life, singing the specially written songs, and making new friends.



Christian Munguia

as Harry Potter

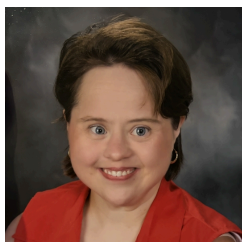
Born in Dallas, TX, Christian loves Spotlight because he loves to meet new people and to be on stage. The show he has always wanted to be in is Charles Dickens' "A Christmas Carol." Christian loves dance and pop music. He has even met Miley Cyrus at NorthPark! A veteran of Spotlight, Christian is a true lover of the arts.



Mary Claire Teeter

as Hermione Granger

A Dallas native, Mary Claire is thrilled to be in her third Spotlight Musical Theater production. She loves all things theater! Outside of Spotlight, Mary Claire enjoys participating in adaptive martial arts and spending time with her twin sister. This year, you'll find Mary Claire playing one of her most loved characters from a well-known movie.



Jessica Smith

as Ginny Weasley

Born in Kansas, Jessica is a Spotlight veteran. Her favorite Spotlight role was as Dr. Storm, the Mad Scientist. This year, she is excited to show off more of her acting skills. When she's not acting, she volunteers at Scottish Rite Hospital.



Scott Beard

as Darth Vader, Star Wars

From the DFW area, Scott is a natural actor, singer, and comedian. He is thrilled to be a part of another Spotlight production as he loves performing and improving his acting skills with Lisa. He is grateful for everyone's support and encouragement.

CREW WHO'S WHO



**Stephanie
Newland**

*Director of Belong Disability
Ministry*

Stephanie is beyond grateful to have been part of the Spotlight program for over 13 years. From volunteer, to producer of the Spotlight Academy of the Arts, to Director of Belong Disability Ministry, Stephanie has her dream job. She thanks her family as well the Belong and Spotlight teams for all their hard work and support.



Lisa Schmidt

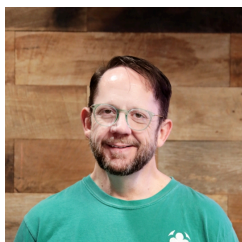
Director

Lisa is committed to making time and space to listen to the quiet people, and to giving them a public platform through which to express themselves. She is profoundly grateful to Sue Ringle, the founder of the Spotlight program, for inviting her to become the theatrical director of the program at its inception 14 years ago. Lisa also would like to thank her husband and children for their generous support through all the years of Spotlight.



Cailey Brandon *Producer, Spotlight Coordinator*

From choreographer to producer and program coordinator, Cailey is exceptionally grateful to be a part of the Belong Disability Ministry. Outside of her work at HPUMC, Cailey works as a movement practitioner, certified in pilates and Neuromuscular Reprogramming. She has her MS in Applied Cognition and Neuroscience and specializes in movement pathologies and neurological disorders. Her passion is rooted in movement, internal awareness, and the mind-body-spirit connectivity.



Tim Johnson

Associate Director

The Managing Director for Kitchen Dog Theater here in Dallas, TX, Tim is thrilled to be joining the artistic team for Spotlight Musical Theater again this year. His work as a director, writer, performer, and producer has received numerous honors from the Rabin Awards, DFW Theater Critics' Forum, and a variety of media outlets. He holds a BFA in Theater from Southern Methodist University and an MFA from Naropa University.

CREW WHO'S WHO



Connie Parry

Associate Director

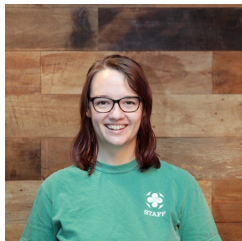
Connie Parry is pleased to be assisting for her fourth Spotlight season. She has enjoyed attending the performances since season one! Connie has been active in the Dallas theater scene for three decades. She has also been fulfilled by her ongoing Parkland Hospital career as a physical therapist since 1987.



George Gagliardi

Composer/Guitarist

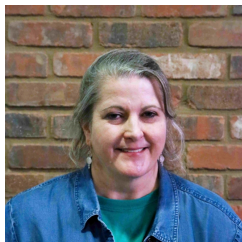
Born in Paris, TX, George has been playing music since high school. He has written over 1,000 songs and is self-taught in piano, guitar, and tenor banjo. He has led songwriting workshops for children and adults and has written the music for every Spotlight musical, except for the first. He plays for many organizations in addition to releasing his own music. Spotlight is one of George's greatest joys.



Jordan Tenpas

Music Director

Jordan Tenpas is a music therapist in Fort Worth, Texas, and this is her second year with Spotlight. She attended SMU, where she was able to perform with the Meadows Opera Theater while in school. She enjoys her current work as a music therapist for kids and adults with disabilities. Jordan is thrilled to work with Spotlight's players and crew!



Maria Marwill-Magee

Accompanist

Maria is grateful to have the opportunity to be in her third season as the accompanist for the Spotlight Musical Theater program. As a lifelong pianist, she has accompanied community musical productions in Dallas and Austin (and even one in London), in addition to numerous instrumental and vocal performances with musicians of all ages. Maria has lived in Dallas most of her life, aside from attending UT Austin and meeting her husband in a pub in London while living there for a year. Away from her piano, she works as a Salesforce Administrator for Big Thought.

CREW WHO'S WHO



Christie Bondade

Choreographer

Christie is a dance artist and educator whose work has been presented nationally and internationally. She is currently in a post-graduate research cohort—Embodied Neurobiology—for Alternate Route Dance/Movement Therapy. She earned an MFA in choreography and a BA in dance with a focus in choreography from TWU. Her creative research centers around dance movement therapy and embodied exploration. Christie is on the faculty at Southern Methodist University and collaborates with Big Thought and HPUMC. Christie serves on the NDEO Dance and Disability Taskforce, aiming to make dance education and experiences more accessible.



Bob Newland

Set Designer

It has been Bob's privilege to work with all the dedicated staff and selfless volunteers involved in the Spotlight Musical Theater production of "Mision: Mirror Mirror." He is so proud of all these amazing actors whose ability, talent, and boundless energy have made this show possible. Thank you!



Sarah Eubank

Costume Designer

Sarah has been with Spotlight for 13 years! Born in Fort Hood, TX, Sarah moved every year growing up. She has lived in Dallas for 36 years, but home will always be Whitehouse, TX, where her family's farm is located. She finds it very special to volunteer with Spotlight, watching the actors work to develop their characters, improving on their acting skills, and using their abilities to their fullest. She is our talented costume designer and creator, adding to the personality of the character the actors are playing. "Spotlight is a unique theater group, an amazing professional staff of very creative individuals and volunteers that bring their talents to support the actors. It is the venue that gives these actors a positive voice in our community."

CREW WHO'S WHO



Doug Anderson

Volunteer

Doug has been a dedicated volunteer since 2014. He admits that in high school, he strongly disliked anything that had to do with musical theater, but he's grown soft for the behind-the-scenes excitement and our incredible cast. He's grown to love acting, singing, dancing, and the thrill of being backstage. Spotlight, after all, is a very special place!



Jan Beard

Volunteer

Jan has been a volunteer with Spotlight for six years now. From running lines with actors to making sure the cast makes their entrances, Jan has been a great helping hand. She and her son, Scott, are thrilled to be part of yet another fun year of creative exploration. Thank you for all you do, Jan!



Colton Brandon

Volunteer

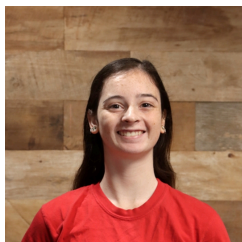
Colton is excited to be part of Spotlight for the third time. It brings him so much joy to work with such talented individuals and to see the time and effort paying off that has been put into the show. He is very grateful to have the opportunity to work alongside such dedicated individuals.



E.J. Burke

Volunteer

E.J. has been a volunteer with Spotlight since 2011. From dancing, to one-on-one actor support, to prop management, E.J. has done it all. This year, you will find E.J. wearing many hats as he supports actors both on and off the stage. We are grateful for your many years of dedication.



Lily Fee

Volunteer

Lily was born in Allen, TX. She studied classical ballet for 16 years, and is very passionate about our cast. She enjoys working with the fun characters that have been created by each of our participants. Lily is a first time volunteer with Spotlight and with the Belong Ministry. Lily, we hope you'll join us again!

CREW WHO'S WHO



Ceci Gladbach

Volunteer

Ceci has been a dedicated Spotlight volunteer since 2015. In addition to serving with Spotlight, she is also a nurse for the Night OWLS program. Ceci is our curtain operator while also managing one side of the stage and props. We couldn't manage without you, Ceci!



Shirley Harrison

Volunteer

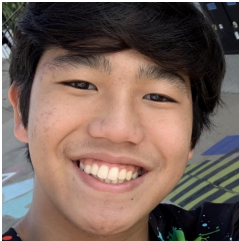
With Spotlight since the beginning, Shirley is thrilled to use her art skills to contribute to the production. She and her daughter, Shannon, look forward to rehearsal each Saturday and are grateful to be part of such a fabulous family of actors and volunteers. Shirley enjoys watching the play come to life as each actor passionately fills their role.



Betsy Hecksel

Volunteer

Betsy is a long-time Belong volunteer and is thrilled to be part of Spotlight Musical Theater again. She is grateful for everything HPUMC has done for the Belong community. She has recently retired from a 40 year career in technology and now enjoys volunteering and having more free time.



Jack Honeyman

Volunteer

Born in Shenzhen, China, Jack is currently a junior in high school at Booker T. Washington High School for the Performing and Visual Arts. This is his second year with Spotlight. He is a major contribution to our production, and we love his passion on our crew!



Sandy Jobe

Volunteer

Sandy is a first time volunteer with Spotlight. She is musically talented and has helped aid our cast members in learning their songs. She loves having the opportunity to see this creation of ideas come to life. We're so happy to have you, Sandy!

CREW WHO'S WHO



Lauren Lawshe

Volunteer

Lauren has been dancing for ten years and trained at Epicenter for the Arts in many genres including ballet, pointe, modern, jazz, contemporary, acro, hip hop, and tap. She has had the privilege of touring and performing with Dance Revolution National Convention for five years. Now, she is a freshman at Southern Methodist University studying Dance and Applied Physiology and Sports Management. She enjoys volunteering at Spotlight Musical Theater because the participants, volunteers, and staff are kind, welcoming, and creative. It brings her joy to see the participants express themselves creatively through dance, and to hear all of their ideas that went into making this show.



Alex Magee

Volunteer

Son of accompanist, Maria Marwill-Magee, Alex is thrilled to be back for a second time as a volunteer for Spotlight Musical Theater. He enjoys the compassion and energy of the Spotlight community as he brings in the many ideas that are brought up to make the show come to life.



Kyla Morris

Volunteer

Kyla is currently an undergrad student at Southern Methodist University. She has always had a love for the arts, as she is currently majoring in dance. During her freshman year of high school, she was in the play "Hairspray," and it was an influential experience that made her realize her love for theater. Participating in Spotlight has allowed her to revisit that love, especially with such an amazing cast. Kyla is a double majoring in chemistry to become a pharmacist, and is thinking of becoming a psychopharmacologist.



Viki Norman

Volunteer

Viki is a volunteer, a mom of a special gal, and a school nurse. She is enjoying her first experience volunteering with the play preparation for Spotlight. She has enjoyed getting to know the director, crew, and actors, as well as getting to experience the musical theater process!

CREW WHO'S WHO



Leticia Parker

Volunteer

Leticia is thrilled to be part of Spotlight Musical Theater once again. Her favorite part is the character development and plot made from scratch. She loves getting to know the actors and their capabilities. She says Spotlight has helped her learn patience and perseverance. Her son, Quentin, loves the opportunity to enjoy this community.



Ben Petroff

Volunteer

Ben is currently a senior at Jesuit Dallas, a beloved partner of Belong that helps provide motivated volunteers for programs such as Spotlight Musical Theater. He has a love for sports, namely rugby and football. His first time as a Spotlight volunteer has also increased his love for theater and fine arts.



Shirley Spittler

Volunteer

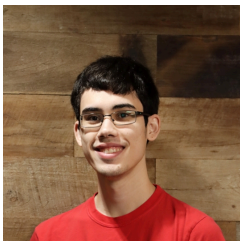
Shirley has been a volunteer with Spotlight since the beginning. She has overseen microphones, props, and stage management in her many years of service. She has been a major help in running lines and backstage management, and we're thrilled to have her back another year!



Stan Spittler

Volunteer

Stan has been a steadfast volunteer for Spotlight since the very beginning. He is one of the program's biggest champions. We are grateful for your many years of service and all of your help with the behind-the-scenes.



Michael Moore

Volunteer

This is Michael's first year in Spotlight Musical Theater. Michael graduated from UT with a BS in Psychology and was involved in theater through elementary and middle school. He currently works as a medical scribe with the hopes of attending medical school in the future. We're so glad to have your talents, Michael!

CREW WHO'S WHO



Lindsay Warner

Volunteer

Lindsay is thrilled to be a part of her fourth Spotlight production. She credits her experience with Spotlight as the inspiration for her recent career change to becoming a special education teacher. Lindsay is grateful to be a part of Spotlight once again.

RECOGNITION SPACES



JESUIT
COLLEGE PREPARATORY
SCHOOL OF DALLAS



Best of luck to our Spotlight friends! We are so proud of you and are looking forward to your spectacular performances!

Jesuit Brothers for Others – Spotlight Team

prestonhollow
highlandpark



214-739-0350
phcatering.net

catering





Making
gardening
accessible to
everyone.

Scan with your
camera to get
growing!



gardenuity.com

2222 Vantage Street
Dallas, TX 75207

 Gardenuity®

RECOGNITION SPACES



**Balloons Now wishes
the entire cast of
Mission: Mirror Mirror
a wonderful performance!**
972.400.1907



Meaningful training and employment for adults with disabilities.



**Soups
Salads
Sandwiches
Sweet Treats**

Hours
Tuesday-Friday 11am-2pm
Saturday 11am-3pm

 224 E Virginia St, McKinney TX

WWW.HUGSCAFE.ORG



A big ottawaytogo to the cast of

MISSION: MIRROR MIRROR



Camp John Marc is a proud partner
of Belong Disability Ministry and its
Night OWLS family camp.

RECOGNITION SPACES

FOREFRONT
LIVING Moments
Matter.

IS PROUD TO SUPPORT THE

Spotlight

MUSICAL THEATER

and the cast and crew of

Scan to learn about our special connection with the Belong Ministry:



MISSION: MIRROR-MIRROR

Super Duper™



COME VISIT US AT
OUR NEW STORE, 6401
HILLCREST SUITE 102
-Shoogie

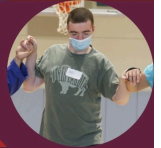
Super Duper Cookie Company
is proud to support the
BELONG MINISTRY and the
IDD Community! We provide
meaningful employment to
those with **IDD.**

besuperduper.com @superdupercookieco
Be Kind Be Inclusive Be Super Duper

SERVE WITH BELONG DISABILITY MINISTRY

HELP KIDS AND ADULTS WITH DISABILITIES
HAVE FUN AND LEARN NEW SKILLS!

LEARN MORE AND SIGN UP TO SERVE
AT HPUMC.ORG/BELONG



FOREVER CHEERING YOU ON!



Love your friends at HP Young Life Capernaum

FOLLOW US ON INSTAGRAM: @HPYLCAPERNAUM

RECOGNITION SPACES



WHITE RHINO
COFFEE



WHITE RHINO COFFEE IS PROUD TO BE THE COFFEE PARTNER OF CHANCE'S CAFE. WE APPLAUD EVERYTHING YOU DO TO MAKE THE WORLD A BETTER PLACE!

CONGRATULATIONS TO THE CAST!



Estate Planning, Probate, Trusts, Social Security
info@gracelawoffice.com | 972-379-8167

RECOGNITION SPACES

*Our very best wishes for our
Spotlight friends in front of the
curtain and behind the scenes!*

- CPPC Teammates and Staff



Teammate Thespians: Luke, Quentin, & Christian

connectingPoint
OF PARK CITIES

myccp.org
Caruth & Preston
on the UPUMC campus

RECOGNITION SPACES

BESTBUDDIES®

Friendship, Jobs, Leadership Development & Living

SAVE THE DATES!



Saturday, May 4th 2024

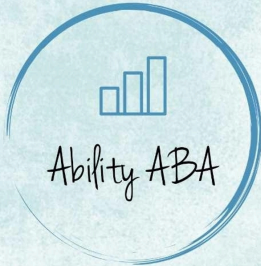


Friday, November 22th 2024



Hotel Swexan
6:00 PM

For more information on joining Best Buddies programs or supporting our mission, please contact:
TracyChurchman@bestbuddies.org | bestbuddies.org/texas



Ability ABA congratulates the
cast of Mission: Mirror Mirror!

11551 Forest Central Drive, Suite 129, Dallas, Texas 75243



**Congratulations and good luck,
“Mission Mirror Mirror” performers!**

Ability Connection currently serves over 1,000 people with disabilities. We offer the following services:

Adult Services

- Case Management & Waiver Services
- Residential Programs
- Training Center

Youth Services

- Summer Program
- Afterschool Program
- Respite Programs
- Online Learning Platform



**enriching the lives of people with disabilities ...
one person at a time**



7880 Bent Branch Drive | Suite 150 | Irving, TX 75063

abilityconnection.org

RECOGNITION SPACES



HEROES proudly supports all of the fabulous cast members of Mission: Mirror Mirror and is excited to be audience members for both evening performances.

Our mission at HEROES is to provide lifelong learning through community experiences. We strive to create social, recreational and vocational programs designed to meet the unique needs of individuals with disabilities.

If you are interested in becoming involved with HEROES, please send an email to info@heroesdfw.org

You may also visit our website, heroesdfw.org or check us out on our Facebook page, HEROES Camp.



**The Notre Dame School
congratulates the cast of
Mission: Mirror Mirror!**

We are so proud of you!



Learn more about Notre Dame School at notredameschool.org
Follow us on Instagram @notredamedallas



My Possibilities *congratulates the cast of* **Mission Mirror Mirror**



Scan me to
learn more!

My Possibilities
provides life-long
learning and
vocational training
for adults with IDD.



mypossibilities.org | 3601 Mapleshade Ln, Plano, TX 75075 | (469) 241-9100

RECOGNITION SPACES



Join The Rise School for Runway for Rise
on Saturday, April 27th at The Ritz!



To learn more or purchase tickets please visit RunwayForRise.org

never trust a round pizza!



i Fratelli
PIZZA

FREE DELIVERY



dis-abled.

ACCESS AND ADVOCACY FOR
THE ABILITIES OF EVERY CHILD.

Our mission is to provide children with special physical and behavioral needs with trusted case management, educational, therapeutic and medically-supported care.

Serving families in DFW since 1985.



Get Involved!
Contact Diana Tellez at
214-765-5258 or
dtellez@bryanshouse.org



RECOGNITION SPACES

Shine bright and smile big to the entire cast of *Mission: Mirror Mirror!*



Betti Jo

Phone: 940.634.9031

bettijoweber@yahoo.com



save
the
date!

Spring
Community Day

April 22, 2024
at

The Tolleson Family
Activity Center

5817 Hillcrest Avenue Dallas, Texas 75205



to be
like me.



Sign Up
today!



AUTOGRAPHS

AUTOGRAPHS



DOUBLE LIFE FILMS



INTO THE SPOTLIGHT



THADDEUS D. MATULA

IT'S L.L.C. PRESENTS IN ASSOCIATION WITH SPINIC & ENT OF THE SHADOWS/LLC "INTO THE SPOTLIGHT"
WRITTEN BY BELOUNG EKARADHY COBARRIETT'S STORY EDIT MUSICAL THEATRE'S DOUGLAS BERNARDI DIRECTOR OF PHOTOGRAPHY ALEX VOCLAIR-BEEMAN & STEPHANIE KETLANDO PRODUCTION DESIGNER JESSICA MCELREATH
EXECUTIVE PRODUCERS ALEX VOCLAIR-BEEMAN & STEPHANIE KETLANDO PRODUCED BY ALEX VOCLAIR-BEEMAN & STEPHANIE KETLANDO WRITTEN BY BELOUNG EKARADHY COBARRIETT
EDITED BY MILES HARGREAVE & HEATHER ROBERTS/REEL DIRECTOR OF MUSIC/COMPOSER LUCAS RALTON PRODUCED BY PAUL BASHARREN, THADDEUS D. MATULA & KIM HOLLIS
PRODUCED BY REEVE TOWNSEND/DO DIRECTED BY THADDEUS D. MATULA

VISIT THE DOCUMENTARY WEBSITE TO GET THE MOST RECENT UPDATES ON WHERE THE FILM IS HEADED NEXT

