

A low-angle, close-up shot of a person's legs from the knees down, standing on a paved city street. The person is wearing dark blue denim jeans and black sneakers with light-colored soles. The background is heavily blurred, showing out-of-focus lights and buildings, suggesting a busy urban environment. The overall tone is contemplative and cinematic.

CHOICES

THE MOMENTS THAT CHANGE LIVES





King Xerxes



Esther

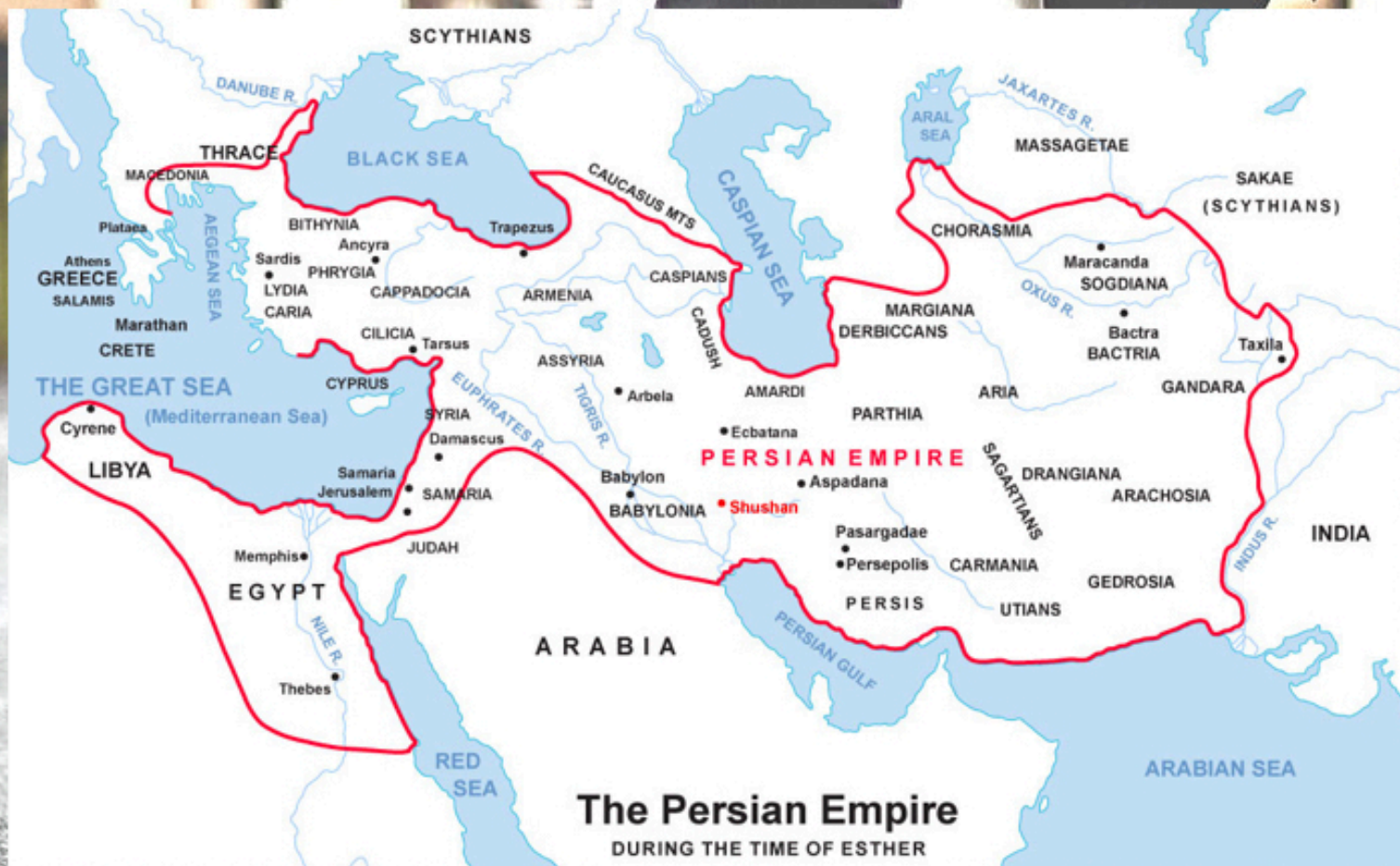


Mordecai



Haman

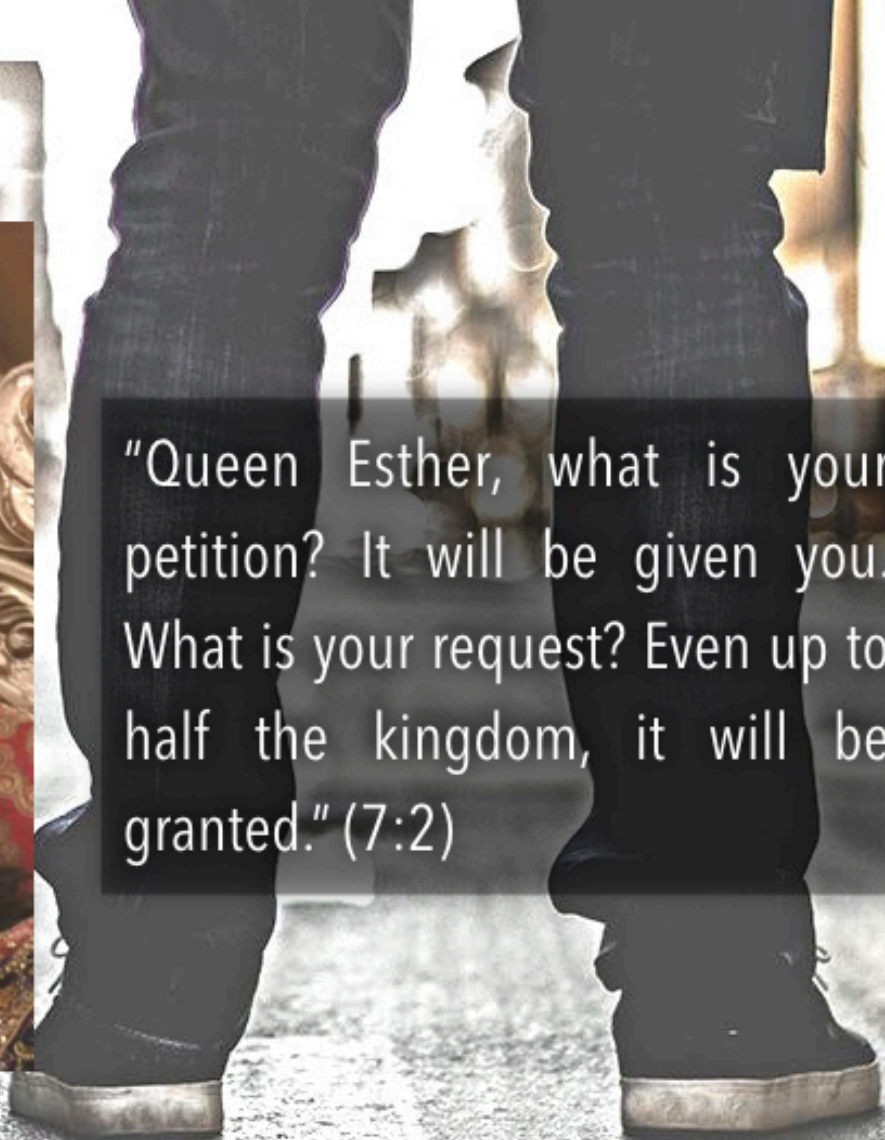








"Queen Esther, what is your petition? It will be given you. What is your request? Even up to half the kingdom, it will be granted." (7:2)

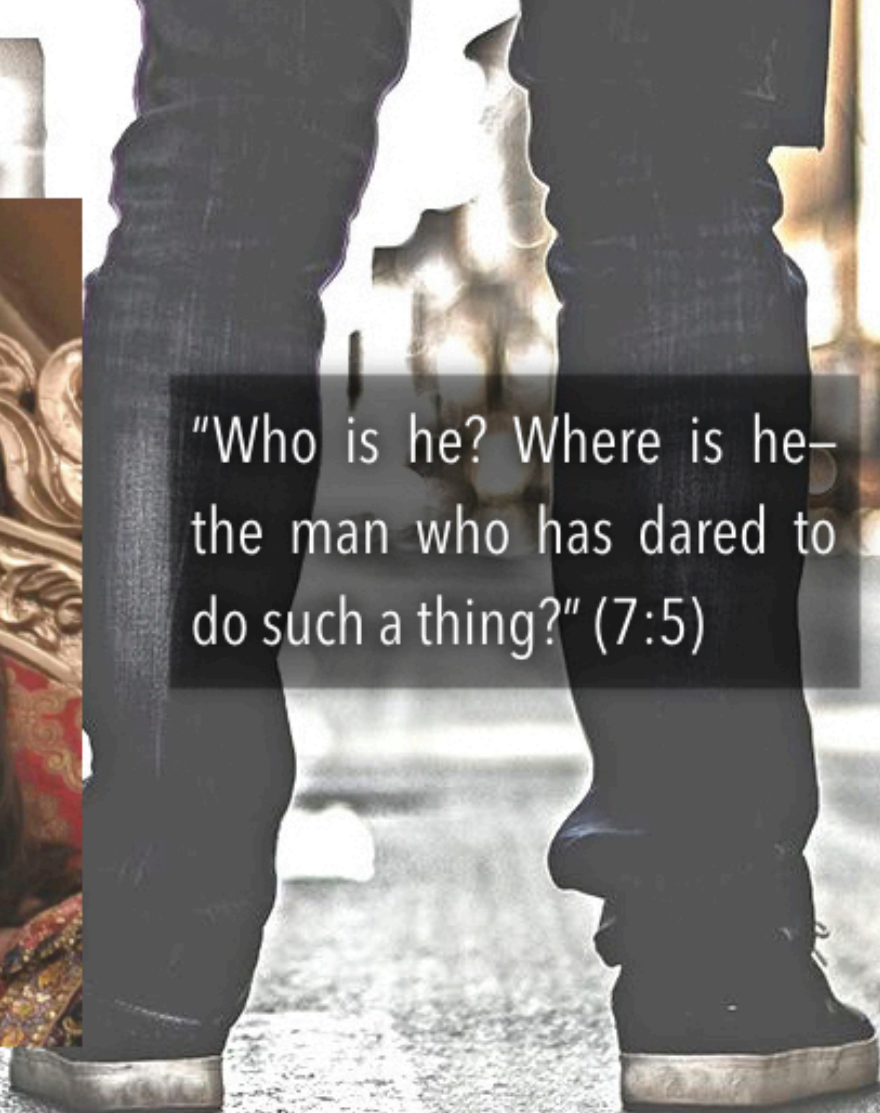


"If I have found favor with you, Your Majesty, and if it pleases you, grant me my life—this is my petition. And spare my people—this is my request. For I and my people have been sold to be destroyed, killed and annihilated. If we had merely been sold as male and female slaves, I would have kept quiet, because no such distress would justify disturbing the king." (7:3-4)





"Who is he? Where is he—the man who has dared to do such a thing?" (7:5)

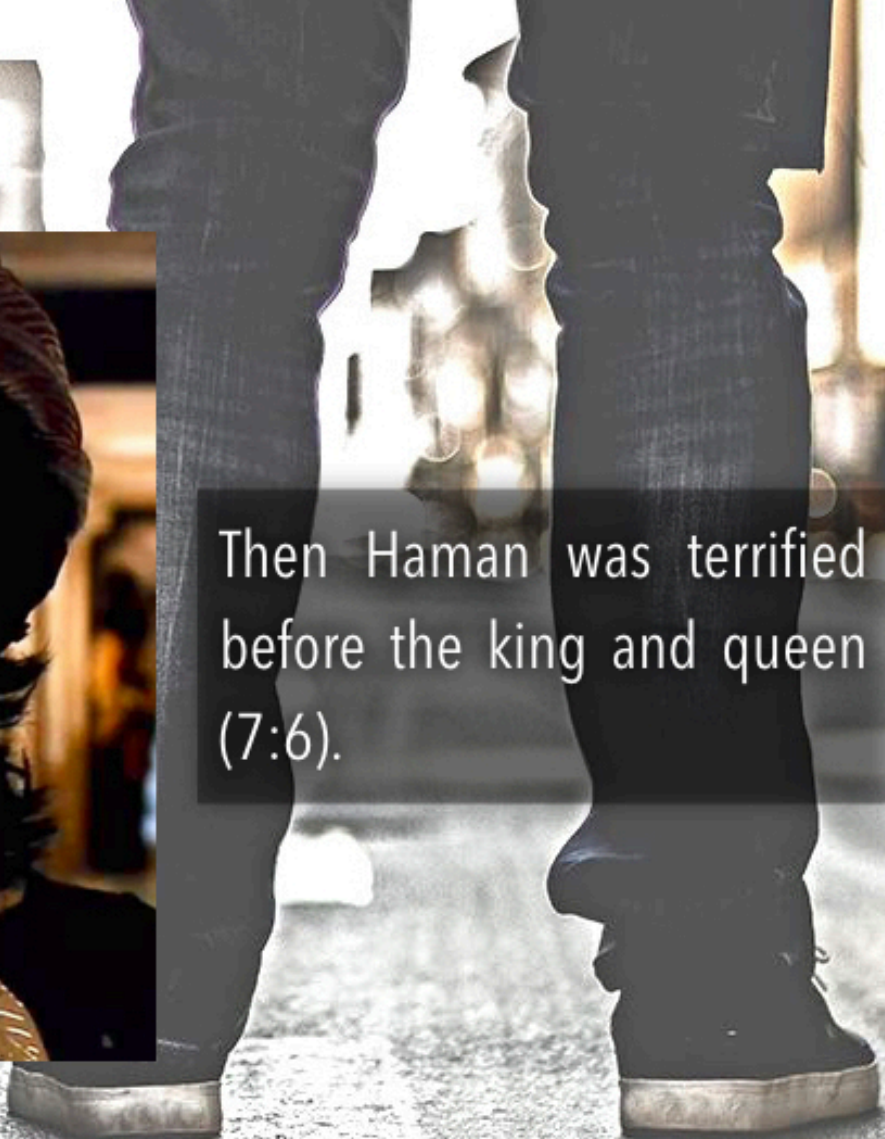


"An adversary and enemy!
This vile Haman!" (7:6)



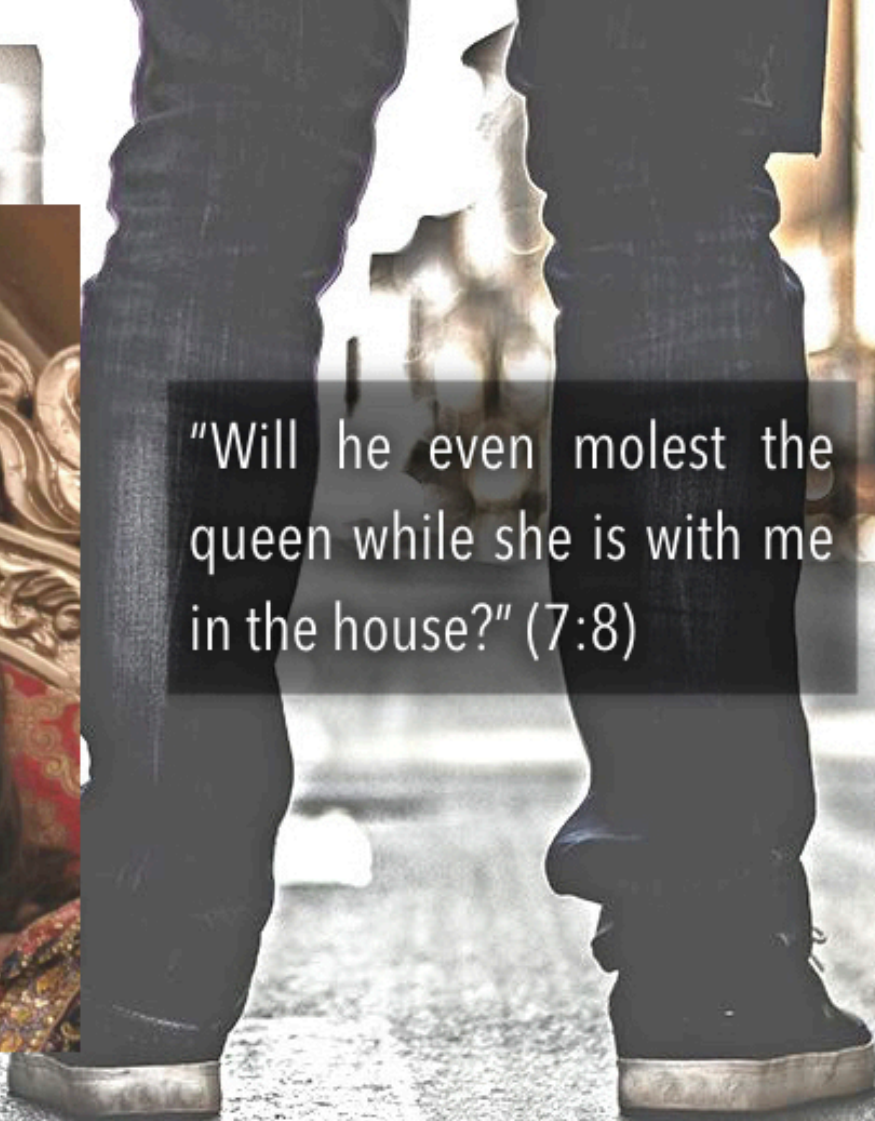


Then Haman was terrified
before the king and queen
(7:6).



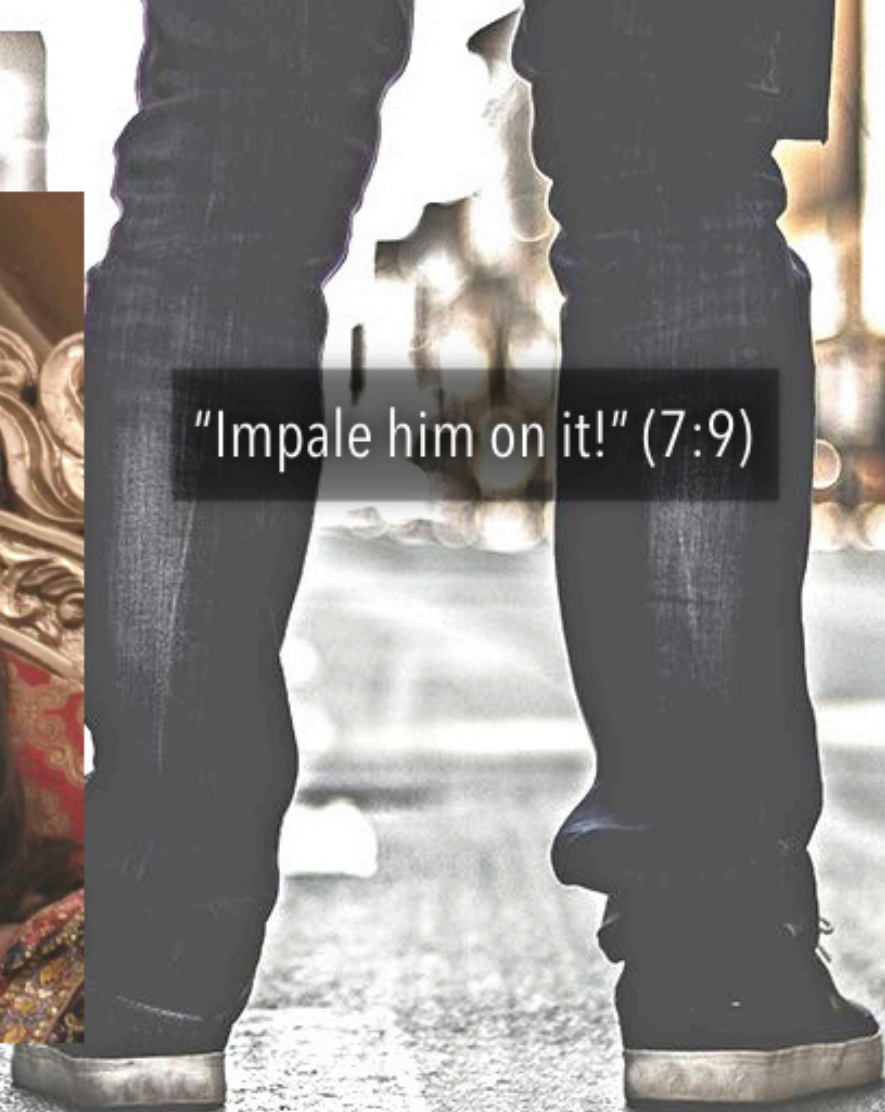


"Will he even molest the queen while she is with me in the house?" (7:8)





"Impale him on it!" (7:9)



A low-angle, close-up shot of a person's legs from the knees down, standing on a paved city street. The person is wearing dark blue jeans and black sneakers with white soles. The background is heavily blurred, showing out-of-focus lights and structures, suggesting an urban environment. The lighting is bright, possibly from the sun being high in the sky.

RESPONSE

Will I choose to believe that God is present even (especially) in those moments when I can't see/feel him?

How can I invite God into the various spheres and situations I am facing?