

Shepherd of the Hill Presbyterian Church (USA)

~ Second Sunday of Lent ~
March 13, 2022 – 10:00 a.m.
Masks are required for all

** Please stand in body or in spirit.*

We acknowledge that our church is on the traditional homelands of the Puyallup Tribe. The Puyallup people have lived on and stewarded these lands since the beginning of time, and continue to do so today. We recognize that this land acknowledgment is one small step toward true allyship and we commit to uplifting the voices, experiences, and histories of the Indigenous people of this land and beyond.

The Prelude to Worship

“More and More Like You”
(Bob Kauflin)

Sheri Martin

*“Lord, cause my will to choose your ways in each temptation that I face,
Until Your glory’s shining through; Make me more and more like You.”*

Greetings

Rev. John Asher

* Call to Worship

Don Johnson

**In this hour we will pray,
Because we long to draw near to God.
In this hour we will sing,
Because words are hardly ever enough.
In this hour we will sit side by side and connect online,
As a reminder that we belong together.
And in this hour, we will cultivate faith—together.
So let us worship with open hearts.
Let us worship Holy God.**

* Song

“Come and Find the Quiet Center”

(on back)

Letting Go of Our Burdens

Don Johnson

Sing: Jesus remember me when you come into your kingdom.

Children's Message

Rev. John Asher

For privacy, we limit the video of the children on our live stream. The audio is broadcast.

Children through 6th grade may be excused to Sunday School in the CE Area,
or remain in worship with their parents.

Sermon

"Cultivating Willingness"

Rev. John Asher

Scripture

Luke 13: 31-35

The Word of the Lord. Thanks be to God.

Special Music

"I Surrender All"

Praise Team & Erin Calata

Prayers of the People

The Lord's Prayer

Our Father, who art in heaven, hallowed be thy name, thy kingdom come, thy will be done, on earth as it is in heaven. Give us this day our daily bread. And forgive us our debts, as we forgive our debtors. And lead us not into temptation, but deliver us from evil. For thine is the kingdom, and the power, and the glory, forever. Amen.

Community Life

Song

"I Will Follow"

**Where You go I'll go, Where You stay I'll stay
When You move I'll move, I will follow**

**All Your ways are good, All Your ways are sure
I will trust in You alone
Higher than my sight, high above my life
I will trust in You alone**

CHORUS

**Where You go I'll go, Where You stay I'll stay
When You move I'll move, I will follow You
Whom You love I'll love, How You serve I'll serve
If this life I lose, I will follow You**

(Continued...)

**Light into the world, Light into my life
I will live for You alone
You're the One I seek, Knowing I will find
All I need in You alone, In You alone
CHORUS**

**In You there's life everlasting
In You there's freedom for my soul
In You there's joy unending joy
And I will follow
CHORUS**

**Yeah I will follow You yeah
I will follow You yeah, I will follow You yeah**

* Benediction

* Postlude

Sheri Martin

Greet someone you don't know following worship this morning!

Music reprinted by permission CCLI#1452675

Music printed by permission One License #A-729350

Call to Worship and Letting Go of Our Burdens Prayer: Adapted from the work of Sarah are of A Sanctified Art LLC, sanctifiedart.org

The sermon series is supported by the work of A Sanctified Art LLC, sanctifiedart.org.

**Lent begins with Ash Wednesday, March 2, 2022 –
and ends with the Saturday of Holy Week, April 16, 2022.**

Lent begins with the 40 days plus six Sundays before Easter which are set aside for spiritual repentance and renewal. It is a time of personal reflection and rededication to Jesus Christ. The 40 days are symbolic of the 40 years of the Old Testament wilderness wanderings and the 40 days of Jesus' wilderness experience.

We are encouraged to use this season of spiritual preparation as we face the reality of our sin and the meaning of the cross.

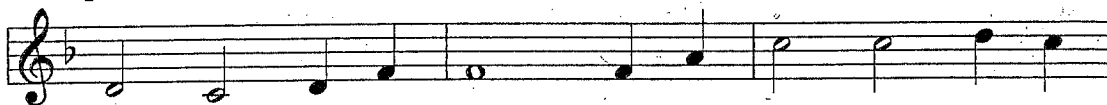
2128 Come and Find the Quiet Center



1. Come and find the qui - et cen - ter in the crowd - ed life we
2. Si - lence is a friend who claims us, cools the heat and slows the
3. In the Spir - it let us trav - el, o - pen to each oth - er's



lead, find the room for hope to en - ter, find the
 pace, God it is who speaks and names us, knows our
 pain, let our loves and fears un - rav - el, cel - e -



frame where we are freed: Clear the cha - os and the
 be - ing, touch - es base, mak - ing space with - in our
 brate the space we gain: There's a place for deep - est



clut - ter, clear our eyes that we can see all the
 think - ing, lift - ing shades to show the sun, rais - ing
 dream - ing, there's a time for heart to care, in the



things that real - ly mat - ter, be at peace, and sim - ply be.
 cour - age when we're shrink - ing, find - ing scope for faith be - gun.
 Spir - it's live - ly schem - ing there is al - ways room to spare.

WORDS: Shirley Erena Murray

MUSIC: Attr. to B. F. White

Words © 1992 Hope Publishing Co.

BEACH SPRING

87.87 D