

HAPPENING THIS WEEK

| SUNDAY | JANUARY 22 | |
|-------------|------------|----------------------------------------------|
| 8:15 | DW | Worship Service |
| 9:30am | ALL | Worship Service & Livestream |
| 9:30am | DW | Family Ministries Grades Preschool-12 |
| 9:30am | DW | Adult Bible Study - Meeting Rm |
| 9:30 & 11am | DW | Nursery |
| 11:00am | DW | Worship |
| 11:00am | DW | Family Ministries Grades Preschool-8 |
| 6:00pm | DW | High School Youth Group |

MONDAY JANUARY 23

| TUESDAY | JANUARY 24 | |
|-------------|------------|-----------------------------------|
| 10am-2pm | DW | Food Pantry |
| 5:30-7pm | DW | Food Pantry |
| 6:00-7:30pm | DW | Youth Group |
| 6:00pm | DW | Fleece & Thank You Blanket making |
| 6:30pm | DW | Finance Meeting - Multipurpose Rm |

WEDNESDAY JANUARY 25

| | | |
|-------------|----|-----------------------|
| 10:00am | DW | Senior Bible Study |
| 2:30-4:30pm | DW | Open Gym |
| 7:00pm | DW | Worship Team Practice |

THURSDAY JANUARY 26

FRIDAY JANUARY 27

| | | |
|--------------|----|----------------------------------------|
| 6:45am | | High School Bible Study at DHS Library |
| 9:30-11:00am | DW | Kahl/Smith Small Group - door 4 |

SATURDAY JANUARY 28 - Building Closed

SUNDAY JANUARY 29

| | | |
|-------------|-----|----------------------------------------------|
| 8:15 | DW | Worship Service |
| 9:30am | ALL | Worship Service & Livestream |
| 9:30am | DW | Family Ministries Grades Preschool-12 |
| 9:30am | DW | Adult Bible Study - Meeting Rm |
| 9:30 & 11am | DW | Nursery |
| 11:00am | DW | Worship |
| 11:00am | DW | Family Ministries Grades Preschool-8 |
| 11:00am | DW | Wendy's Small Group - Meeting room |
| 6:00-7:30pm | DW | High School Youth Group |

Key: DW—DeWitt; SJ—St. Johns; ON—Online; All—All Campuses

Enews Would you like to receive our weekly enews? Keep up with what's happening, sign-up for our enews. contact us at: office@dewittredeemer.org



ONE CHURCH. TWO LOCATIONS.
www.myredeemer.church

DeWitt (Main Office)

13980 Schavey Rd
DeWitt, MI 48820

517-669-3430

Office Hours:

Mon-Thurs: 8:30am-4:30pm

Sunday Services:

In-person:

8:15, 9:30, 11:00am

Online: 9:30am (FB & YouTube)

St. Johns

200 E State St.
St. Johns, MI 48879

989-224-6859

Office Hours:

Tue & Wed: 1:00pm-4:00pm

Sunday Service:

9:30am

FOLLOW US



[facebook.com/
myredeemerchurch](https://facebook.com/myredeemerchurch)



[/redeemer.church.mi](https://www.instagram.com/redeemer.church.mi)



www.myredeemer.church

GIVE TO REDEEMER

online | App

myredeemer.church/give

A NEW SOUNDTRACK



MESSAGE: *REPEAT Until Automatic*

January 22, 2023

Philippians 1:12-19

Pew Bible pg. 983

Welcome to worship!

We are so grateful that you have joined us. This morning, we are wrapping up our message series called “A New Soundtrack.” Our thoughts are very powerful and form the internal “soundtrack” that we listen to all day long. Where are your thoughts taking you—in a positive direction or a negative one? We need to RETIRE some broken soundtracks, REPLACE them with God’s truth, and REPEAT them until they are automatic.

CHECK IN

You are important to us. Guests and members, let us know you are here or leave a prayer request by filling out the connection card in the pew and dropping it in one of the boxes in the back of the worship center. You may also check in online through our app or by scanning this QR code or by visiting:

[myredeemer.church/
connect](https://myredeemer.church/connect)



Announcements

VOLUNTEER OPPORTUNITY:

Are you a people person? Are you a good listener? Do you enjoy sharing your Redeemer knowledge? We are looking to staff our information desk with a rotating group of volunteers for all services. Your time commitment for a service would be 15 minutes before the service, and 10 minutes after.

If this sounds like you, please see [WENDY](#) at the info desk.

BABY BLESSINGS MINISTRY



You are invited to help us provide blessings to babies (newborn-12 months) in the Greater Lansing area by donating items from the list below. We will collect items between Sunday, January 22 and Sunday, February 12. Donations will go to Pregnancy Services of Greater Lansing and The St. Johns Baby Pantry. Monetary donations can be

dropped off in the church office, given online, or through the mobile app. Please note "Baby Blessings" on the check or envelope and someone will do the shopping for you. Thank you for helping local moms and dads provide for their new babies.

SUGGESTED ITEMS: Bibs, Onesies, Zipper Pajamas, Burp Cloths, Sleep Sacks, Socks, Baby Lotion, Baby Shampoo, Body Washcloths, Crib Sheets, Swaddle blankets, Diapers size NB to 3, Baby Wipes, Diaper Cream, Outlet covers, Cabinet locks, Digital Thermometer, Clothes/Outfits (size 0-2T), Baby Laundry Detergent, Rattle or teether.

IT HURTS TO LOSE SOMEONE. FIND HELP AT GRIEF SHARE.



GriefShare is a friendly, caring group of people who will walk alongside you through one of life's most difficult experiences. You don't have to go through the grieving process alone.

Redeemer is once again partnering with Northpointe Church in DeWitt to offer GriefShare. This 11-week class on Tuesday night runs February 7 to April 18 from 6:30pm – 8:30pm. Classes will be held at Northpointe Church (505 E. Webb, DeWitt.) The only cost is \$20 for the workbook.

To register or with questions contact [WENDY ELLIOTT](#) at or call/text 517 819 9706.

OUTREACH MINISTRIES

THANK YOU

to the St John's Campus

For providing 100 sack lunches to the Advent House Shelter for the month of January!



Advent House – every month a group of volunteers provide and pack 100 sack lunches for the Advent House Shelter in Lansing. This month the St. John's campus packed the meals, thank you to the volunteers that joined us and helped make an impact. We still have 3 months that need to be filled in 2023, if you are interested in this outreach opportunity, please reach out to [SUZIE UNRUH](#).

OUTREACH MINISTRIES - continued

VOLUNTEERS NEEDED

We have several different #BeTheChurch Outreach events coming up that are in need of volunteers:

- Tuesday, January 24, at 6PM – Fleece & Thank You Blanket making
- Wednesday, January 25, at 5:30PM – Weekend Survival Kits (Food kits for kids) (5 volunteers still needed for Weekend Survival Kits)

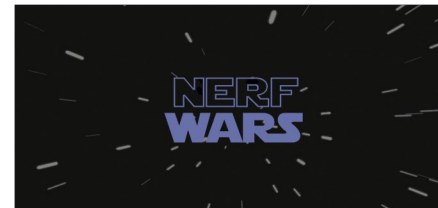
For specific locations on events and to sign-up, visit here the Redeemer website page under Outreach, the Redeemer mobile app under Sign-Ups, or the BeTheChurch Facebook page. For questions, please contact [SUZIE UNRUH](#) at or text 269-275-8773.

FAMILY MINISTRIES

SNOW MUCH FUN - FAMILY-FUN NIGHT!!

Snow Much Fun will take place on Friday, February 3, from 6-8 p.m. at the DeWitt Campus. This is a family-fun night with indoor activities, craft stations, and snow themed treats. Bring your neighbors and friends for this winter blast. A parent/adult must stay with child(ren). Snow Much Fun is open to children ages preschool through 5th grade. It will be Snow Much Fun!

Please register at myredeemer.church/events to help us with counts. >> **Volunteers still needed, [CONTACT EMILY](#).**



February 10, 6-8pm

6-8pm

6-12th Grades only

Nerf battles, Pizza, Prizes - bring your friends!

TO VOLUNTEER CONTACT [MEGAN](#)

CHRISTIAN ATHLETIC CAMP (CAC) REGISTRATION IS OPEN

CAC is a unique overnight camp experience for students going into 7th grade through 2023 high school grads. We provide competition, along with team and individual sport training; all in a fun, action-packed week.

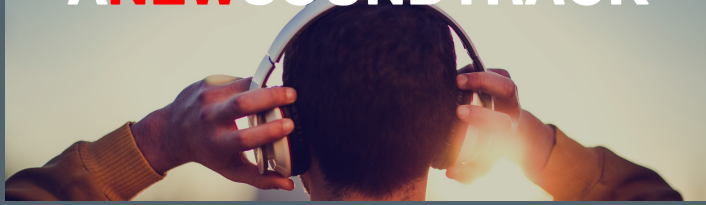
This Christian environment allows students to explore and develop their faith walk, or be introduced to the love of Jesus Christ. [CLICK HERE TO REGISTER.](#)

CONFIRMATION CLASSES ARE BACK!

Students 8th grade and up are invited to join Confirmation Classes starting on February 12. Classes will be held Sundays, February 12 to March 12, from 11am-12pm, followed by Confirmation Sunday during the 11am service on March 19th.

> [REGISTER HERE.](#)

A NEW SOUNDTRACK



MESSAGE: *REPEAT Until Automatic*

Philippians 1:12-19

Pew Bible pg. 983

Big Idea: LOOK THROUGH THE LENS OF GOD'S GOODNESS

GETTING STARTED

Are you the kind of person who sees the glass half-empty or half-full?

REFLECTION/DISCUSSION QUESTIONS

1. What has happened as a result of Paul's imprisonment?
2. What effect did Paul's situation have on most of his fellow believers? (v.14)
3. Paul was in prison but joyful. What difficult circumstance are you currently dealing with? What is your attitude toward this situation?
4. Where has God been able to use bad for good in your life?
5. How can you train your mind to look for God in every situation?
6. How can you keep the truth of God's Word on repeat until it becomes part of your identity?
7. What are the prayer requests on your mind and heart today?

PRAYER: Lord Jesus, you are always working things together for our good. Help us to see Your hand, even in the difficult times of life. May the truth of your Word be on repeat in our minds, so we can look through the lens of your goodness. You always have a greater plan and purpose. In the name of Christ, we pray, Amen.

GOING DEEPER: Read Philippians 1:1-2:30. Notice that Paul says in 2:14: "Do everything without complaining or arguing..." How easy or difficult is this for you? Do you often focus on the problem or the solution? Great thoughts lead to great actions. Change your thinking...change your story!

FOCUS SCRIPTURES:

January 22, 2023

"And I want you to know, dear friends, that everything that has happened to me here has helped to spread the Good News. For everyone here, including all the soldiers in the palace guard, knows that I am in chains because of Christ. And because of my imprisonment, many of the Christians here have gained confidence and become more bold in telling others about Christ..." v.18: "I will continue to rejoice, for I know that as you pray for me and as the Spirit of Jesus Christ helps me, this will all turn out for my deliverance."

Philippians 1:12-19

MY NOTES: