

## HAPPENING THIS WEEK

### SUNDAY • SEPTEMBER 8

#### FALL KICKOFF SUNDAY!

8:15am	DW	Worship Service
9:15am	DW	Adult Bible Study - Meeting Room
9:30am	ALL	Worship Service & Livestream
9:30am	DW	Engage High School - High School Room
9:30am	DW	Radiate Middle School - Gym
9:30am	DW	Nursery / Kids Club
11:00am	DW	Nursery / Kids Club (except for Bridge)
11:00am	DW	Worship Service
11:00am	DW	Seeker's Bible Study - Meeting Room
6:00pm	DW	Young Adult Bible Study - HS Room - Door 4*
6:30pm	DW	Engage High School Group - Gym- Door 5*

### MONDAY • SEPTEMBER 9

### TUESDAY • SEPTEMBER 10

10:00am-2:00pm	DW	Food Pantry
5:30-7:00pm	DW	Food Pantry
6:00pm	DW	Radiate Middle School - Gym - Door 5*

### WEDNESDAY • SEPTEMBER 11

10:00-11:00am	DW	Sing & Play - Nursery
2:00pm	DW	Helping Hands - Meeting Room
7:00pm	DW	Worship Team Practice
7:00pm	DW	Risk Management Meeting - Door 4*

### THURSDAY • SEPTEMBER 12

### FRIDAY • SEPTEMBER 13 - Office Closed

### SATURDAY • SEPTEMBER 14 - Building Closed

### SUNDAY • SEPTEMBER 15

8:15am	DW	Worship Service
9:15am	DW	Adult Bible Study - Meeting Room
9:30am	ALL	Worship Service & Livestream
9:30am	DW	Engage High School - High School Room
9:30am	DW	Radiate Middle School - Gym
9:30am	DW	Nursery / Kids Club
11:00am	DW	Nursery / Kids Club (except for Bridge)
11:00am	DW	Worship Service
11:00am	DW	Seeker's Bible Study - Meeting Room
6:00pm	DW	Young Adult Bible Study - HS Room - Door 4*
6:30pm	DW	Engage High School Group - Gym- Door 5*

\*Door numbers refer to the large white numbers on the building's exterior, above each outside door.

Sign up for our weekly eNews! Email us at: [office@dewittredeemer.org](mailto:office@dewittredeemer.org)



ONE CHURCH. TWO LOCATIONS.  
[www.myredeemer.church](http://www.myredeemer.church)

#### DeWitt (Main Office)

13980 Schavey Rd.  
DeWitt, MI 48820

517-669-3430

#### Office Hours:

Mon-Thurs: 8:30am - 4:30pm

#### Sunday Services:

8:15, 9:30, & 11 am  
Online: 9:30 am (FB & YouTube)

#### St. Johns

200 E. State St.  
St. Johns, MI 48879

989-224-6859

#### Office Hours:

Tue & Wed: 1:00pm - 4:00pm

#### Sunday Service:

9:30am

#### FOLLOW US



[facebook.com/  
myredeemerchurch](https://facebook.com/myredeemerchurch)



[/redeemer.church.mi](https://redeemer.church.mi)

Download the Redeemer app

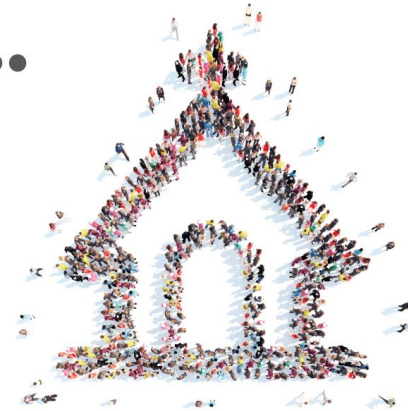


[www.myredeemer.church](http://www.myredeemer.church)

GIVE TO REDEEMER  
online | App  
[myredeemer.church/give](http://myredeemer.church/give)



# The Church Is...



When many people hear the word "church," they think of a building. But biblically speaking, a church is much more than a building. In fact, we will see from the New Testament writers that church is all about people. Join us for a series in the month of September where we get back to the heart of the church and what being a part of a Jesus community truly means.

MESSAGE: THE CHURCH IS... THE FAMILY OF GOD September 8, 2024

Text: Ephesians 2:19-22

Pew Bible page: 978

# Welcome to Redeemer!

#### CHECK IN

Whether you're at one of our campuses, online, new, or here all the time, be sure to sign in on a pew card, on the Redeemer app, online, or use the QR code! You can also share prayer requests, ask questions, & more.



## REMINDER:

**TODAY is Fall Kickoff!** Enjoy some specialty coffee and beverages from Biggby plus lots of tasty treats; located under the canopy!



Small Groups  
More details coming next week!

## SMALL GROUPS

Starting next week, we will provide all the details for available Small Groups this fall. Here's a preview of the groups you can join:

- Men's study groups
- Women's study groups
- Young adult study groups
- Senior study groups
- Young Families study groups
- Everyone is welcome study groups

**RADIATE**  
Middle School Youth Group:  
Tuesdays at 6-7:30 pm

**ENGAGE**  
High School Youth Group:  
Sundays at 6:30-8 pm

Sunday Mornings  
at 9:30 am

## STUDENT MINISTRIES

- Sunday Mornings at 9:30 am
- Radiate MS: Meets in the Gym
- Engage HS: Meets in the HS Room

## RADIATE MIDDLE SCHOOL

- Tuesdays at 6-7:30 pm

## ENGAGE HIGH SCHOOL

- Sundays at 6:30-8 pm

DeWitt #BTC  
Evening Outreach

**Sept 25**  
6:30 pm

We'll work on various projects that benefit local families & organizations!

## #BTC EVENING OUTREACH

- Wednesday, September 25 | 6:30 pm
- DeWitt Campus in the Gym
- Work on a variety of projects to benefit local families and organizations
- Sitting & standing jobs for all ages
- No need to sign up, all are invited
- Learn more online under [EVENTS](#)

Infant - Age 3 **BEGINNINGS** NURSERY Sundays at 9:30 and 11 am

Ages 3-5 (fully potty-trained) **EXPLORERS** Preschool: Ages 3-5 Sundays at 9:30 and 11 am

**KINGDOM QUEST** Grades K-3 Sundays at 9:30 and 11 am

**BRIDGE** Grades 4-5 Sundays at 9:30 am

## KIDS CLUB

- Sunday Mornings at 9:30 am & 11 am (except for Bridge - only at 9:30 am)

## BEGINNINGS NURSERY

- Infant - Age 3

## EXPLORERS

- Ages 3-5: must be fully potty-trained

## KINGDOM QUEST

- Grades K-3

## BRIDGE

- Grades 4-5

## NEW APP FEATURE:

**Our Redeemer App now uses a Messaging feature for groups! Stay in touch with your peers, other parents, or fellow volunteers! Check it out!**

**Sing & Play**  
story & music with Ms. Emily

10-11 am  
infant - 5 years

September 11: Construction  
September 25: Apples

Twice a month on Wednesdays!

## SING & PLAY - THIS WEDNESDAY

- Wednesdays: September 11 and 25
- All events: 10-11 am
- For ages infant - 5 years
- September Theme: Construction (Sept 11) Apples (Sept 25)
- Story, music, art, & playtime with Ms. Emily
- Learn more online under [EVENTS](#)

HELPING HANDS  
MINISTRY  
sewing and crafts

## HELPING HANDS MINISTRY

- Monthly on the Second Wednesday
- 2-4 pm | DeWitt Campus
- Works on a variety of sewing and craft projects for local organizations
- Cutting, assembling, sewing, and other simple tasks - all skill levels welcome
- Learn more online under [OUTREACH](#)

Redeemer Outreach  
DEWITT | ST JOHNS  
**#bethchurch**

## WATER DELIVERY

As a simple way of saying Thank You, volunteers will deliver bottled water this week to our local police and fire departments. Please take a moment to join us in praying for the men and women that serve the communities we love.

## GREATER LANSING FOOD BANK

We are looking for volunteers to join us at the GLFB in Bath on Wed, Sept 25 & Nov 20. Sign up online under [#BeTheChurch](#).

## THANKSGIVING & CHRISTMAS NAMES

We're making our list for Thanksgiving Baskets & Christmas Giving Tree families. If your family is in need of extra help this year or you know of a local family in need, contact Suzie Unruh at [sunruh@dewittredeemer.org](mailto:sunruh@dewittredeemer.org).

## #BETHECHURCH EVENT CALENDAR

### THIS WEEK

**Sept 9** - St. Vincent de Paul

**Sept 9** - Water Delivery to Police & Fire

**Sept 11** - Helping Hands

### COMING UP

**Sept 15** - Advent House

**Sept 16** - Monthly Outreach at St. Johns

**Sept 20** - St. Vincent de Paul

**Sept 25** - Greater Lansing Food Bank

# The Church Is...



MESSAGE: THE CHURCH IS... THE FAMILY OF GOD

September 8, 2024

Text: Ephesians 2:19-22

Pew Bible pages: 978

**BIG IDEA:** BE PART OF A JESUS COMMUNITY

“So now you Gentiles are no longer strangers and foreigners. You are citizens along with all of God’s holy people. You are members of God’s family. Together, we are his house, built on the foundation of the apostles and the prophets. And the cornerstone is Christ Jesus himself. We are carefully joined together in him, becoming a holy temple for the Lord. Through him you Gentiles are also being made part of this dwelling where God lives by his Spirit.”

Ephesians 2:19-22

## MY NOTES:

### GETTING STARTED

Is your extended family larger on your mom’s side or your dad’s side? When was your last family reunion?

### REFLECTION/DISCUSSION QUESTIONS

1. What is the most important aspect of family for you?
2. Paul uses the metaphor of “fellow citizens with God’s people and members of God’s household” in vs. 19. What words would you use to describe a church family?
3. Share a time when you felt “needed and known” in the church or another group. How did it impact you?
4. The Greek word for church is “ecclesia” meaning “called out ones, assembly, or gathering.” Is church a place or a people for you? Or both? Why?
5. “Families make memories together.” Who are your 5-7 friends that you hang out with at Redeemer? If you are newer, what would it take to create some friendships here? Where could you serve, chat with someone near where you sit, or join a small group to get to know others?
6. “Families stick together.” There is a common purpose and identity, through thick and thin. When have you helped to carry a burden for another in the family of God here?
7. What are the prayer requests on your mind and heart today?

**PRAYER:** Lord Jesus, you are the One who brings people together. We celebrate today the work that you did on the cross to unite the people of God everywhere. Form us together as a church family that is strong, solid, and secure, built on You. In Jesus’ name, we pray, Amen.

**GOING DEEPER:** Read Ephesians 2:1-22. In this passage, Paul divides a Christian’s life into two periods. What are they? What is the relationship between God’s grace and good works? What has God’s grace meant to you in your life?