

# MID TREE CHURCH

## MISSIONAL STRATEGY



## MID TREE: BEHIND THE NAME

In the beginning was a tree that brought us death,  
in the end a heavenly tree that yields life eternal.  
In the middle stands a tree.  
A tree that gives us access.

This tree has no root, yet it stands eternally.  
It stood in darkness, yet pours forth light.  
Was intended for death, yet brings forth life.  
Has neither leaf nor fruit, yet shelters and feeds.  
Was made to separate, yet draws us together.  
Upon this tree our hope is built. (1 Peter 2:24)

## MISSION STATEMENT:

Mid Tree Church is commissioned by God to the ministry of the gospel to all peoples through discipleship and community.

### GOSPEL CENTERED

For I am not ashamed of the gospel, for it is the power of God for salvation to everyone who believes. Romans 1:16

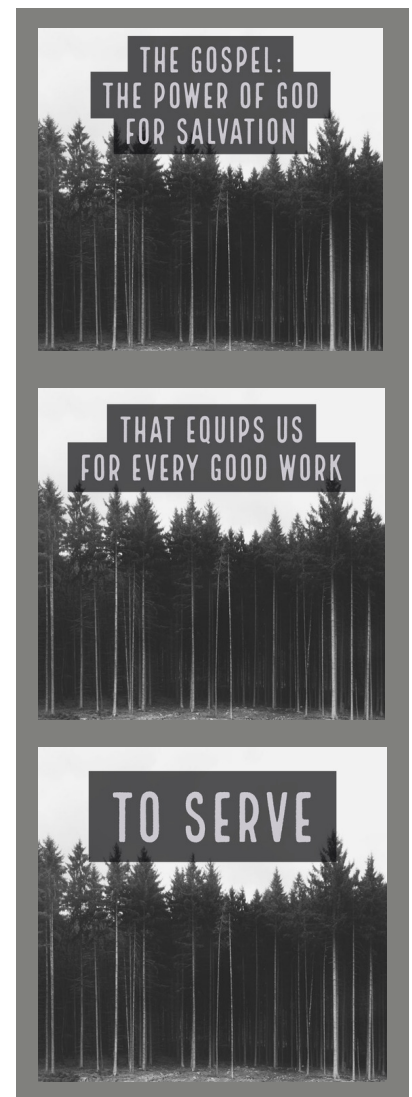
### MISSIONAL IN COMMUNITY

Above all, keep loving one another earnestly, since love covers a multitude of sins. Show hospitality to one another without grumbling. As each has received a gift, use it to serve one another, as good stewards of God's varied grace... in order that in everything God may be glorified through Jesus Christ. To him belong glory and dominion forever and ever. 1 Peter 4:8-11

### DISCIPLE MAKING

All Scripture is breathed out by God and profitable for teaching, for reproof, for correction, and for training in righteousness, that the man of God may be complete, equipped for every good work. 2 Timothy 3:16-17

OUR BIG THREE



# MISSIONAL STRATEGY

## SUNDAY

### WORSHIP SERVICE: GOSPEL



#### I. Ethos

- A. Sunday mornings 10:30-12:00
- B. Worship (contemporary)
  - i. Christ exalting
  - ii. Gospel centered
  - ii. Biblically based liturgy

#### C. Message

- i. Expository
- ii. Orthodox in belief
- iii. Modern in method

#### II. Doctrine & distinctives

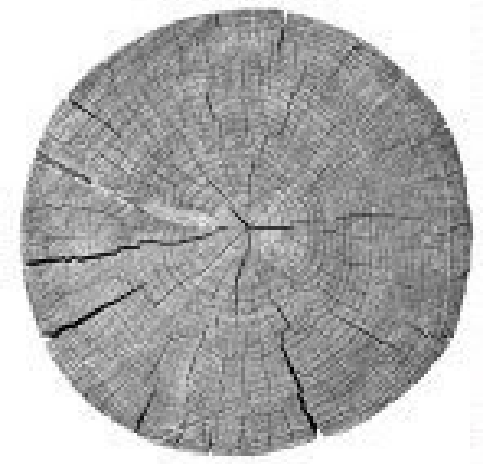
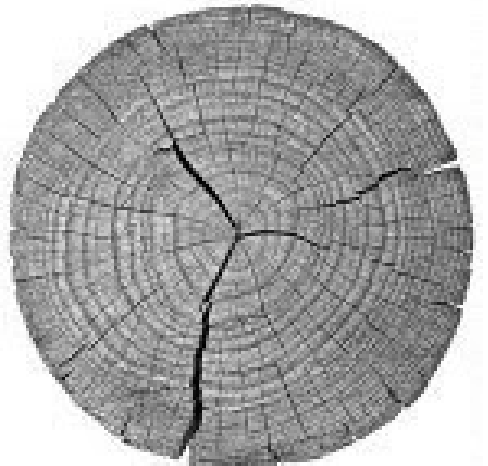
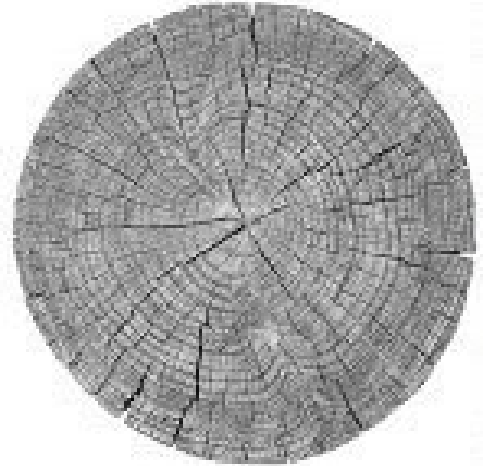
- A. Inerrancy of scripture
- B. London Baptist Confession of 1689
- C. Reformed Theology
- D. Complementarianism
- E. Credo-Baptist

# MISSIONAL STRATEGY

## WEDNESDAY

### MISSIONAL COMMUNITY

- I. MC's will meet in host homes.
- II. Content
  - A. Sermon discussion
  - B. Book study (books suggested or approved by Elders)
- III. Outreach
  - A. Two weeks, during the eight week rotation, are intended to be fun gatherings where outreach is the goal.
  - B. One of these gatherings may be a church wide event. (Fall Festival, Christmas Tree Burn, Pig Roast, etc.)
- IV. Family involvement - Younger kids or teens will help serve or join the adult discussion based on maturity as deemed by the parent.
- V. Leader development
  - A. Leaders are sought out by Pastors for this shepherding position.
  - B. Qualifications:
    - i. Membership
    - ii. Faithful in handling the Word of God.
    - iii. A heart for discipleship and hospitality.
  - C. Oversight and training is conducted by the pastoral team via MC visits and debriefing.



### DISCIPLE MAKING

- "Be disciples that make disciples"
- I. Teaching and training that the gospel would be known fluently and lived missionally.
    - A. Competence in the Word of God.
    - B. Equipped for the service of God.
  - II. Teaching is thematic in nature. (Book/Topic)
  - III. Teaching is geared toward age-specific groups (nursery/child/teen/adult)
  - IV. Schedule 6:30-8:00:
    - A. Fellowship - drinks and desserts
    - B. Worship
    - C. Teaching

# MID TREE CHURCH

## MISSIONAL STRATEGY

### WHY HARRIS COUNTY / MIDLAND?



- Twice the growth rate of the state average.
- Most residences are held by young and established families.
- Charitable contributions to religious organizations are well above the state average.
- One and a half times the median income of Columbus, GA.
- Approximately 1/3 rd of residence consider Bible, scripture study, and prayer groups to be "very important".
- More detailed demographics information can be obtained from: <http://bit.ly/Midlanddemographics>

### LOCATION:

We are focusing our search on the area between Veterans Parkway and Macon road seeking to be North of J. R. Allen Parkway.

- Pine Ridge School
- Warehouse on Jameson Court
- Ellerslie Church
- Midland Lodge



# MISSIONAL STRATEGY

## FINANCIALS

### Commitments from CrossPointe:

- One year's salary for Will Hawk
- Rental support
- Financial support for up to four years
- An active account for core-team giving

### Budget based on Midland demographics:

- Median income: \$30,000-35,000
- Team of 50 at median income = \$1,500,000
- Core team giving (10%) = \$150,000/year or \$12,500/month
- Additional congregants' giving (5%) = \$1,500/year/person
- Assuming core-team giving for 6 months prior to plant = \$75,000 saved

### Expected giving and budget consideration:

- 50 members at 10% = \$150,000/yr. or \$12,500/mo.
  - \*Giving percentage expected to decline as membership increases
- 60 members (10 @ 5%) = \$150,000 + \$15,000 = \$165,000 or \$13,750/mo
- 70 members (20 @ 5%) = \$150,000 + \$30,000 = \$180,000 or \$15,000/mo
- 100 members (50 @ 5%) = \$150,000 + \$75,000 = \$225,000 or \$18,750/mo
  - CrossPointe's current giving levels:
    - 100 members = \$225,000
    - 600 members = \$1,350,000

### Typical church-plant budget percentages (at core-team numbers):

- 15% = Missions/evangelism (\$1,875)
- 15% - Ministries (\$1,875)
- 50% - Staffing (\$6,250)
- 20% - Facilities (\$2,500)
- Savings = \$75,000

# MISSIONAL STRATEGY

## LEADERSHIP



Kwame Agyemang was born in Detroit and moved to Columbus, Ga. with his family in 1990. Now a grateful husband to Jasmine and a privileged father to Elizabeth Grace, Kwame and his family are humbled and excited to serve the community and the people of God. Kwame recently graduated from Columbus State University where he received a Bachelors of Science Degree in Sociology. Kwame also works full-time at Midtown Medical in Columbus as a Patient Experience Coordinator.

In the past, Kwame sought a career as a hip-hop choreographer and actor, but when the Lord saved him at age 25 his desires switched to glorify God in all things instead of himself. Throughout the years Kwame has gone alongside OM International to share the Gospel through preaching, teaching and art. The Lord has allowed him to teach in places like Hungary, Italy, and China. A life that was enslaved to sin and death has been made alive through the precious blood of Jesus, the Prince of Peace. Now Kwame desires to proclaim the grace and truth of God by the Holy Spirit in all that he does.



Will Hawk is a native of Columbus, Ga., and spent his teenage years in Midland. He has been married to his high-school sweetheart for 12 years and thoroughly enjoys rough-housing with his three boys and doting upon his daughter. By God's providence, he was raised in a faithful church where the word of God was preached and the gospel was proclaimed. At a young age, he recognized his need for a Savior and responded in faith and was baptized. From that point forward he has grown in love for his Savior and has sought to glorify God through serving his bride, the church. He has worked with underprivileged youths in camp ministry, served in para-church ministries in the local school-system, traveled as a retreat speaker, and serves on the Columbus Baptist Association leadership team. As a pastor, he has ministered in two churches over the past 18 years and looks forward to planting a gospel-centered church expressed through community in Midland, Ga.

# MISSIONAL STRATEGY

## LEADERSHIP



Born and raised in Apopka, Fla., Josh Hutchinson moved to Columbus to pursue an undergraduate degree in music performance from Columbus State University's Schwob School of Music. In his first year of college, by God's grace he gave his life to Christ. He began to seek the Lord and was given the desire to serve in vocational ministry. Josh has been on staff at CrossPointe Church for over two years as a pastoral assistant, helping with youth and leading Sunday morning classes. Josh is engaged to Jacquelyn Dunton who is an English education major at CSU, and they are planning on getting married in May 2018. Josh has a real heart for youth, discipleship, and community.



Ryne grew up in north Georgia, just south of Chattanooga, Tenn. He moved to Columbus in August 2005 after developing friendships (one with his eventual wife) through a beach retreat for high school and middle school students. By God's grace, he was raised in a believing home and responded to the Gospel at the age of 8. The Lord used several people in college to spark an interest in learning more about biblical theology which helped to advance his sanctification and love of ministry. He has been serving in different capacities within the church, mainly leading worship, for almost two decades. Vocationally, Ryne works for a financial institution providing comprehensive wealth management services. He has been married to his wife, Laura, for 10 years, and they have two children, Luke and Nora. Ryne's hope is that we, as believers, would remember the gravity of what we have been saved from in Christ and that we would respond with lives that truly taste and see that the Lord is good.

# MISSIONAL STRATEGY

## LEADERSHIP



Jimmy Brooks, with his wife Anne Marie, and their family have been part of the Columbus, Ga., community since 1994 when he joined West Georgia Eye Center. Jimmy came to Christ when God intervened in his life through an FCA high school football coach, and the journey of sanctification continues! Over the past several decades, he has been active in church ministry by serving in roles such as deacon, men's prayer coordinator, Sunday-school teacher and finance committee member. Jimmy is passionate about local and international ministries and currently volunteers at Columbus' Mercy Med and the Lighthouse for Christ Mission in Kenya. The Lord has increasingly placed a desire on Jimmy and Anne Marie's hearts to be used up for the Gospel wherever He may bring them, which now includes Mid Tree Church. Their hope is that God would allow them to be participants in His work of bringing people to see their need for His grace and mercy through Jesus Christ.