

ONE CHURCH. MULTIPLE LOCATIONS.

St. John's Multi-Site Ministry Voter's Meeting
Tuesday July 19th @ 6:30pm



Come hear the plan and give input!

Schedule for the Evening

Opening Devotion

Multi-Site Ministry Presentation

Group Discussion

Questions & Feedback

Multi-Site Ministry Resolution

St. John's

CHURCH & SCHOOL

Multi-Site Ministry Presentation – 7/19/2016

3 H's

What We Heard from Emmaus

1. Emmaus' legacy is important;
2. Emmaus has a vision to reach people with God's love!
3. Rebirth is needed.



St. John's has the vision, members, energy, resources, experience and heart to rebirth Emmaus as a new worshipping community!

Vision Alignment

A Heart for the Lost

Multi-Site Ministry

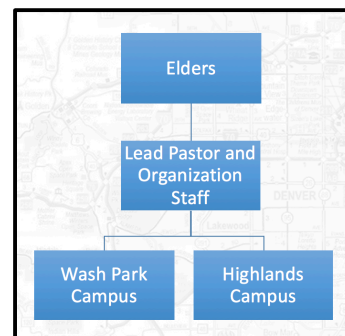
- One church. Multiple Locations.
- Goal: To expand ministry to new locations so that we can connect more people with Jesus!

In early 2014, the leadership of St. John's began to pray about Multi-Site ministry. Multi-Site ministry is when one church worships and does ministry in multiple locations. Multi-Site churches should not describe their locations with terminology such as mother/daughter or main/satellite, because each site is an equal part of the one church. We have come to believe that in many situations, Multi-Site ministry is a great way to plant new Jesus-centered worshipping communities and that it can have advantages over the typical church planting model.

- What would one church in multiple locations look like?



One Constitution
 One Board of Elders
 One Mission
 One Set of Guiding Principles
 One Budget
 Multiple Campuses



Advantages

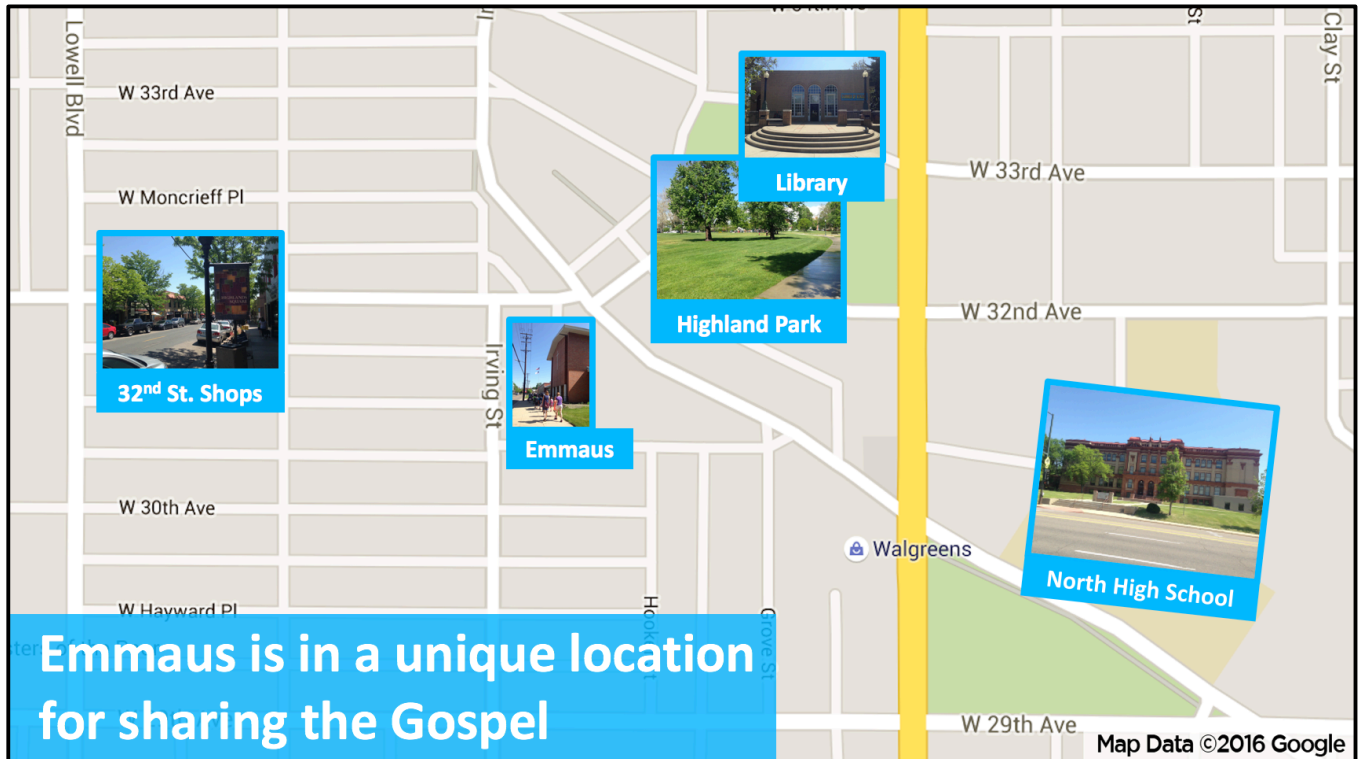
- Expands the healthy ministry of St. John's to new locations where people need to hear Jesus;
- Healthy leadership is already in place;
- Mission / Vision / Values are already set;
- Time can be spent on reaching the lost instead of constitution, website or other setup logistics;
- The founding campus can mobilize staff, members and funds to help the campus "launch big."
 - We believe that new ministries can be more effective by "launching big." This means launching new locations with a full staff (Pastor, Worship Leader, and Children's Minister), instead of "parachuting" a new pastor into the community to start from scratch by himself.
- Multiple campuses are stronger and more stable than one.

Over the past two years, our elders, pastors, staff and congregation have prayed about Multi-Site ministry and have asked God to lead us toward expanding our ministry to two locations. The Highlands is location that would fit our ministry well and that needs to hear the Gospel proclaimed from a Lutheran perspective.

Since St. John's was founded in 1879, we've planted at least 18 daughter churches, including Emmaus, which, according to our historical records, was formed by seven members from St. John's in 1907. Our desire is for the Gospel to continue to be proclaimed in the Highlands Community from 3120 Irving Street. We believe there is much joyful ministry to be done!

The Highlands Needs Jesus!

- The Highlands has many young adults and young families who need Jesus;
- Emmaus is in a very important for sharing the Gospel and should NOT be sold. It would be devastating to lose this footprint of Jesus in the Highlands.



What happens now that Emmaus wants to become a Multi-Site campus of St. John's?

What will Multi-Site Ministry Mean for Emmaus?

- To move forward, Emmaus needs to vote to transfer its property, long-term debts and assets to St. John's to seed the new multi-site ministry campus;
- Emmaus will then have three months to complete its ministry and wind down its affairs. St. John's will pay Emmaus' deficits during this time so that Emmaus' employees would have adequate time to search for new work;
- St. John's will help Emmaus hold a final celebration service;
- St. John's will establish a display on the campus that would honor and celebrate the legacy of Emmaus.
- Emmaus' members will be invited to become members of St. John's and worship at our Wash Park campus until the new Highlands campus launches.



What will St. John's Do Right Away?

- Give thanks to God for the opportunity to start a new ministry;
- Call a voter's meeting to approve multi-site finances;
- Appoint a transition team to work closely with Emmaus during the three-month transition;
- Get to know the people of Emmaus;
- Introduce the people of Emmaus to St. John's leadership and vision;
- Appoint various launch teams and begin planning the new multi-site ministry.



What will Multi-Site Ministry Look Like?

- It will be one church, in two locations;
- The new multi-site ministry campus would be intentional about reaching the Highlands, which has a high percentage of young adults;
- The new multi-site ministry campus will be distinctly Lutheran and be contextually geared to reach people in the Highlands community;
- “Millennials” (those born 1980+) value sacred space and technology. Emmaus’ beautiful sanctuary would be supplemented with technology to support worship that has traditional and modern elements.
- St. John’s will Call a pastor, worship leader and children’s minister to staff the new campus from day one;
- St. John’s values school ministry, so we will asses the property’s ability to support such a ministry and determine if it is financially possible;

What could it look like in three years?

- A vibrant community of believers will be gathered around God’s Word and Sacraments.
- A pastor, worship leader and children’s minister work as a team to lead the campus.
- We’ll have a compelling worship service, which draws from our Lutheran heritage and incorporates modern elements.
- Java Café could be operating on campus.
- We will be known for having one of the most child-friendly services around.
- The facility will be remodeled and busy with activity as ministries and outside groups use it.
- Many members will be living in the neighborhood and showing God’s love to the neighbors.
- The church will have 75% of it’s members in a LIFEGroup, in order to build strong relationships, help one another grow in the faith and serve others.
- Our Early Learning Center and/or School is addressing the growing childcare and education needs in the Highlands.
- There would be opportunities to interact with other believers at the Wash Park campus.

- A high value would be placed on valuing all people, including those who are far from God.
- The church will organize regular community service events.
- The church will be praying about where God might lead them to plant another campus so that others might hear the name of Jesus.

What does the timeline look like?

- Summer 2016 – Begin Call process for a campus pastor;
- Begin evaluation process to determine feasibility of school ministry;
- September/October 2016 – Emmaus completes its ministry;
 - Emmaus members invited to St. John’s Wash Park campus;
 - Possible maintenance and renovations start;
 - Sunday worship will briefly pause at the property until the new ministry launches. However, the campus will be a very busy place as people work to prepare for the new ministry and outside groups are welcomed to meet on campus.
- December 2016 – Call a campus pastor for the new multi-site campus;
 - The pastor will learn the St. John’s culture, begin to mobilize a launch team, start to make community connections and help hire other staff members;
 - The pastor and launch team would work to form new LIFEGroups in the Highlands;
 - Launch team members would spend considerable time building relationships in the community and connecting with their neighbors.
- April 2017 - Advertising for the new ministry would begin;
- May 2017 – Monthly “Preview” services begin;
- August 2017 – Launch Sunday morning worship.

Projected Cost

Pay off Emmaus' Debts	\$350k
Building Renovations	\$500k
Staffing <i>(through July, 2019)</i>	\$425k
Operational Costs <i>(through July, 2019)</i>	\$250k
Loan Payments <i>(through July, 2019)</i>	\$225k
Total Projected Expenses:	\$1,750,000

Total Projected Revenue:	\$850k
<i>(From Offerings, Campaign Gifts, Facility Rentals)</i>	

Balance:	-\$900k
-----------------	----------------

We seek permission to finance up to \$1,500,000 to cover the **balance** and unforeseen expenses.

It's all about Jesus!



ST. JOHN'S MULTI-SITE RESOLUTION

WHEREAS, the elders, pastors, staff and members of St. John's Lutheran Church and School in Denver, CO, after years of prayerful consideration, believe that becoming a Multi-Site church would be a God-honoring way to advance our mission of "Connecting People with Jesus;"

WHEREAS, St. John's has presented a Multi-Site Ministry plan to Emmaus Lutheran Church in Denver, CO, which includes:

1. Assuming ownership of Emmaus' property, debts and assets;
2. Celebrating the 109 year ministry of Emmaus;
3. Taking responsibility for the proclamation of the Gospel in that community;
4. Launching a second campus of St. John's in that location.

WHEREAS, on July 10th, 2016, the members of Emmaus voted to accept St. John's Multi-Site Ministry Proposal;

NOW THEREFORE, be it resolved by the voting members of St. John's Lutheran Church as follows:

1. We, the voting members of St. John's Lutheran Church and School in Denver, CO, authorize the leadership of our church to accept the gift of property, debts and assets from Emmaus Lutheran Church in Denver, CO. We authorize our leadership to use whatever processes are proper to facilitate the transfer, so long as in their opinion, there are favorable terms.
2. We commend Emmaus for its 109 year ministry, which has no doubt resulted in the saving of many souls. We commend their members for bravely entrusting God's resources to the care of St. John's so that the name of Jesus may continue to be proclaimed from that place.
3. We express our desire to become a Multi-Site church; to become one church in multiple locations. We authorize our leadership to make it so and to plant a second campus of St. John's at the property that Emmaus is entrusting to us.

4. We approve the expenses needed to launch the new campus. We authorize our leadership to finance up to \$1,500,000 for the new campus. We authorize our leadership to secure additional funding for this endeavor through donations, grants, budgeted funds and/or capital campaigns.

Adopted this _____ day of _____, 2016.

ST. JOHN'S LUTHERAN CHURCH AND SCHOOL

President

Attest:

Secretary