



LifePoint Doorway Class

Understanding LifePoint & Church Membership



PART ONE “OUR CHURCH”



The goal of this class:

▶ To encourage those interested in LifePoint to commit themselves to Christ and to the LifePoint family.



Scripture emphasizes active membership in a local church

“... You are no longer foreigners and aliens, but fellow citizens with God’s people and members of God’s household,” Eph 2:19 (NKJ)

“So then you are no longer strangers and aliens, but you are fellow citizens with the saints and members of the household of God,” Eph 2:19 (ESV)



“Now from Miletus [Paul] sent to Ephesus and called the elders of the church to come to him. ... ²⁸ Pay careful attention to yourselves and to all the flock, in which the Holy Spirit has made you overseers, to care for the church of God, which he obtained with his own blood.” [Acts 20:17,28 \(ESV\)](#)



Key biblical truths about church membership

- The Church is a spiritual family. (Gal 6:10, Eph 2:19)
- God expects you to be part of a church family. (Heb 10:25)
- A Christian without a church family is a contradiction.



Part Two

“Our Purpose”



The Purpose of LifePoint Bible Church is:

“To help the un-churched of the Edmond/West OKC area become connected to a vibrant community of believers who are experiencing ongoing spiritual transformation through a passionate commitment to Christ and His Word.”



Our purpose can be summarized as:

“Helping people love God and others.”



Our purpose statement is based on 2 key scriptures:

- The Great Commission: Mt 28:19-20
- The Great Commandment: Mt 22:36-40



We believe LifePoint should always be growing:

- Because God loves people.
- Because God commands us to reach out.
- Because growth is God's will.



Even though there is some validity to the claim that large churches can be impersonal, we believe LifePoint can solve that problem by growing larger and smaller at the same time.

At LifePoint, we intend to grow smaller through Small Groups.



Part Three

“Our Imperatives”



- We believe it is imperative that people know Scripture!

“Man shall not live by bread alone, but by every word that proceeds from the mouth of God.” [Mt 4:4 \(NKJ\)](#)

“And you shall know the truth, and the truth shall make you free.” [Jn 8:32 \(NKJ\)](#)

“Your Word is truth.” [Jn 17:17 \(ESV\)](#)



- We believe it is imperative that people experience “authentic” worship in our services

“for the Father is seeking such people to worship him. ²⁴ God is spirit, and those who worship him must worship in spirit and truth.”

[Jn 4:23-24 \(ESV\)](#)



Believing there is no “standard” form that must be followed in worship, we believe if the music is God-honoring, any style or component can be useful in enhancing the worship experience.



- We believe it is imperative that every believer be involved in ministry

At LifePoint, we believe four things about ministry:

- Every member is a minister.
- Every task is important.
- Every member is a potential “10” in some area.
- Ministry is best done in a small group.



To be an effective minister, everyone must discover their S.H.A.P.E. for ministry

Spiritual gifts

Heart

Abilities/talents

Personality

Experiences in life



Part Four

“Our Strategy”



Paul said: “To the weak I became weak, that I might win the weak. I have become all things to all people, that by all means I might save some.” [1 Cor 9: 22 \(ESV\)](#)



So, who are we trying to reach?

The un-churched, unreached, and unfed
of the Edmond/West OKC Area.



In *Growing Churches*, Michael Dean best describes our philosophy for existence:

“We don’t exist as a church just for ourselves. We exist for the people who are not yet here, the unchurched and unsaved. That has implications in every aspect of church life: everything from the parking lot, buildings, schedules, programs, everything. Everything needs to be geared to those who are not yet in our church. In most churches it is just the opposite. They are geared to accommodate the people who are already there.”



Part Five

“Our Structure”



We believe Scripture teaches that the “nature” of the church determines its structure.



1. The Church is a Fellowship

- Two top priorities in a fellowship are unity and harmony.
- According to Scripture, any attitude that causes disunity is sin.
- Business meetings and voting: we believe that “voting” tends to kill the fellowship, therefore we have few business meetings and vote on few items.



2. The church is a Body

We are a body, not a business; an organism, not an organization!

- We function on the basis of spiritual gifts NOT elected officers.
- In an organization, maintenance becomes the focus, but in an organism, ministry is the focus.
- Our structure is simple so we can maximize ministry and minimize maintenance.



In the LifePoint structure:

- The People are the ministers.
- The Pastors are the servant leaders.



3. The church is a Flock

- This term was Jesus' favorite description of the Church:
(Jn 10:1-30; Mt 26:31; 25:33)
- Therefore, it is cared for and led by Elders/Shepherds.



Three different terms are used in the New Testament to refer to the same church leader with each title simply describing a different function of the same office:

- “POIMEN”: [Pastor](#)
- “PRESBUTEROS”: [Elder](#)
- “EPISKOPOS”: [Bishop](#)

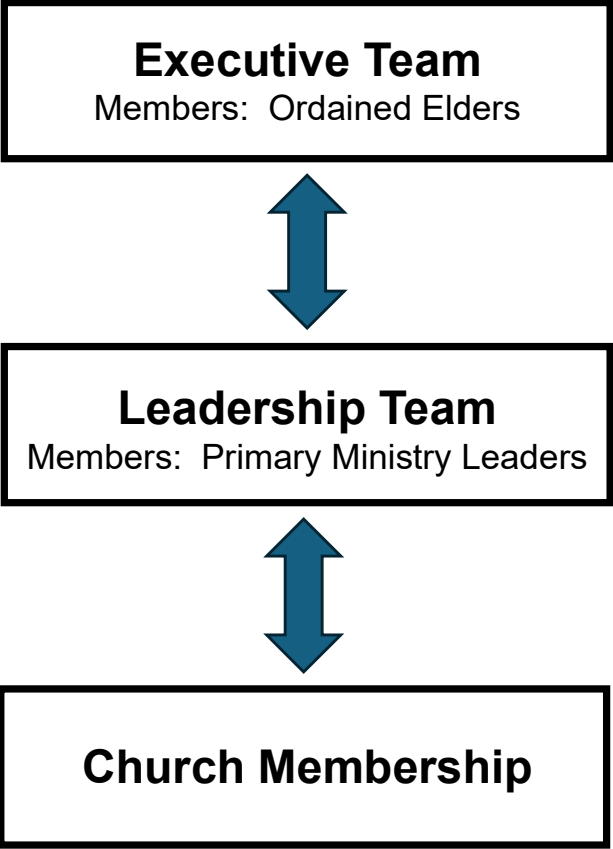
(Titus 1:5-7, 1 Pet. 2:25, 5:1-4)



We believe that God's form of government for the local church is elder leadership.

“Let the elders who rule well be counted worthy of double honor, especially those who labor in the word and doctrine.” 1 Tim 5:17 (NKJ)





Part Six

“Our Salvation”



We are more interested in making certain people know Christ than in making them members of our church.



- A person must be “born again” to become a member of LifePoint.
- A person must be “scripturally” baptized to become a member of LifePoint.
- A person must embrace “who LifePoint is” to become a member. (see LifePoint Doorway Manual)



Part Seven

“Our Statements of Faith”



What we believe:

- In essential beliefs – we demand unity.
- In non-essential beliefs – we allow liberty.
- In all our beliefs – we show charity (love).



Our essential beliefs (doctrines) are found
in our LifePoint Doorway Manual



Our core values:

Of all the things we emphasize, we consider these most important:

Scripture
Evangelism
Community
Ownership
Excellence
Worship
Leadership
Unity



Part Eight

“Joining LifePoint”



What it means to be a member of LifePoint:

The difference between “attenders” and “members” can be summed up in one word: [commitment](#).



We ask you to commit to membership for four reasons:

1. A Biblical Reason: Christ is committed to the church.
2. A Cultural Reason: it is a solution to our society's problems.
3. A Practical Reason: it defines who can be counted on.
4. A Personal Reason: it produces spiritual growth.



The Trinity Membership Covenant

“Having received Jesus Christ as my Lord and Savior, having been scripturally baptized, and agreeing with the statements, strategy, structure, and salvation of LifePoint, I now believe it is God’s will that I unite with the LifePoint Bible Church family. In doing so, I commit to God and to the members of LifePoint to do the following:



- Safeguard the unity of LifePoint
- Serve in the ministry of LifePoint
- Strengthen the testimony of LifePoint
- Support LifePoint with my giving

